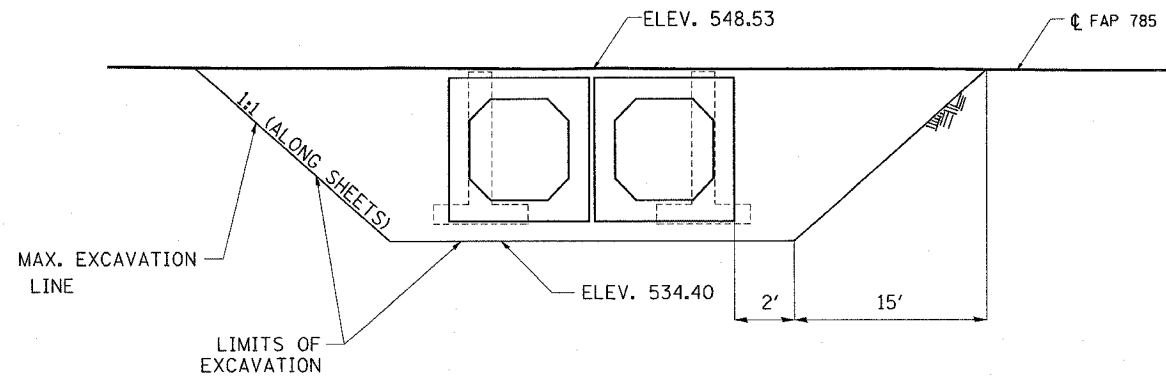
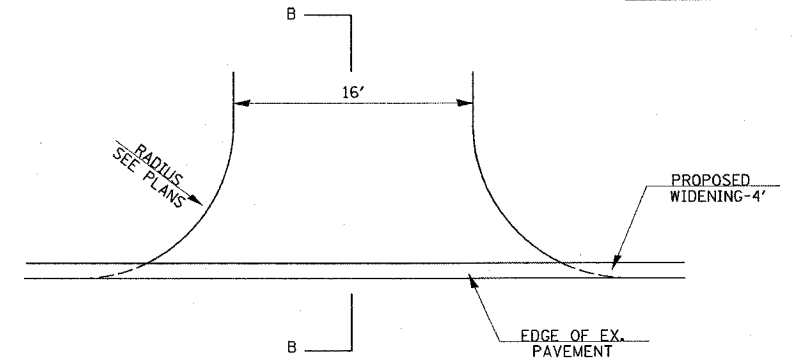


F.A.P. RTE.	SECTION	COUNTY	TOTAL SHEETS	SHEET NO.
785	137BR	BOND	29	26
STA.		TO STA.		
FED. ROAD DIST. NO.		ILLINOIS FED. AID PROJECT		

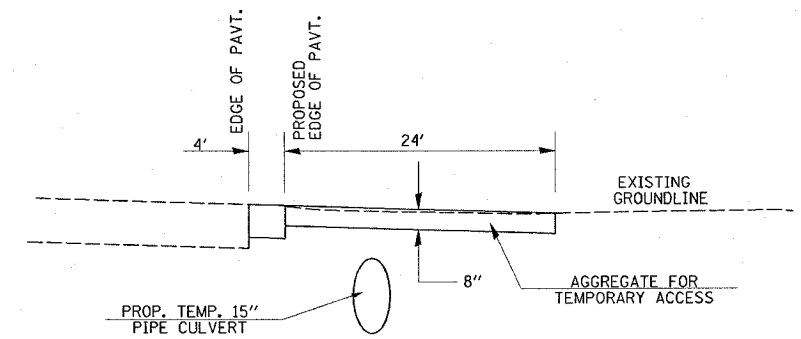


TEMPORARY SHEET PILING DETAILS

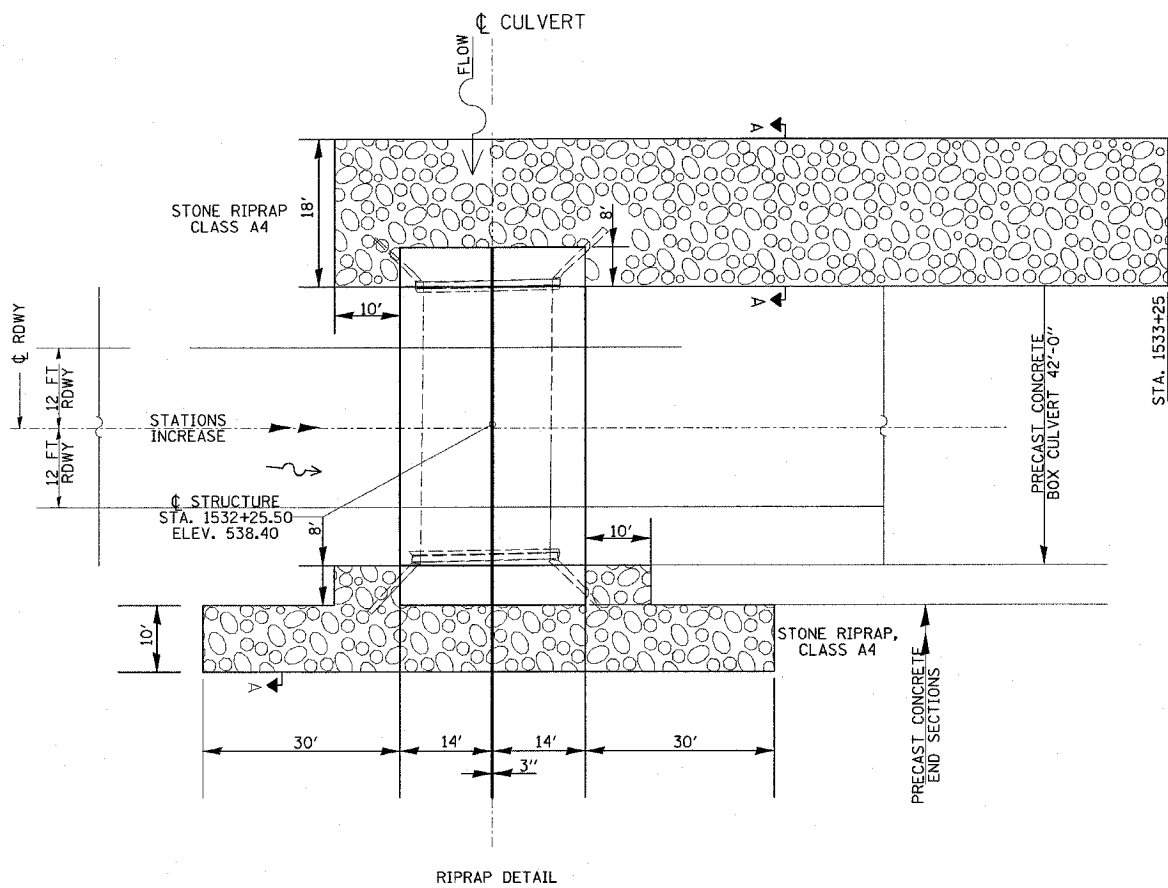
THE QUANTITY FOR "TEMPORARY SOIL RETENTION SYSTEM" WAS CALCULATED USING A TIP ELEVATION OF 505.99 AND A TOP ELEVATION OF 548.53. THE ACTUAL AREA MUST BE DETERMINED DURING THE DESIGN. A CANTILEVERED SHEET PILING DESIGN DOES NOT APPEAR FEASIBLE AND ADDITIONAL MEMBERS OF OTHER RETENTION SYSTEMS MAY BE NECESSARY. THE CONTRACTOR SHALL SUBMIT A "TEMPORARY SOIL RETENTION SYSTEM" DESIGN INCLUDING PLAN DETAILS AND CALCULATIONS BY A LICENSED STRUCTURAL ENGINEER FOR REVIEW AND ACCEPTANCE BY THE ENGINEER.



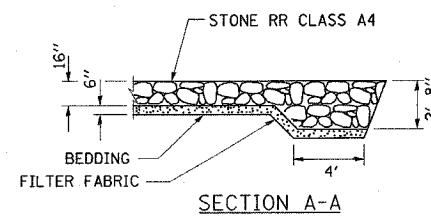
TEMP. ENT.



SECTION B-B
PROPOSED TEMP. ENT.



RIPRAP DETAIL



SECTION A-A

REVISIONS	
NAME	DATE

ILLINOIS DEPARTMENT OF TRANSPORTATION

DETAILS

FAP ROUTE 785
SECTION 137BR
BOND COUNTY

PLOT DATE = 5/3/2007
FILE NAME = c:\p\proj\msta\ed0691\plan\p1m023a.dgn
PLOT SCALE = 20,000 / 1" IN.
USER NAME = cameron