

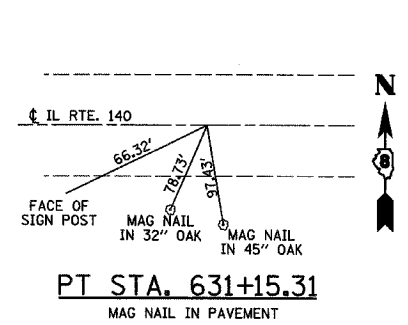
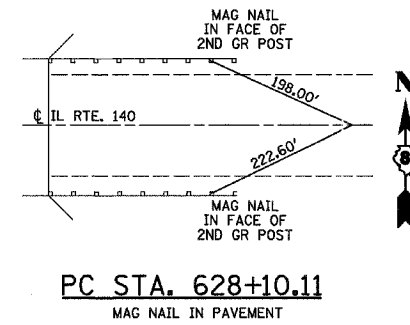
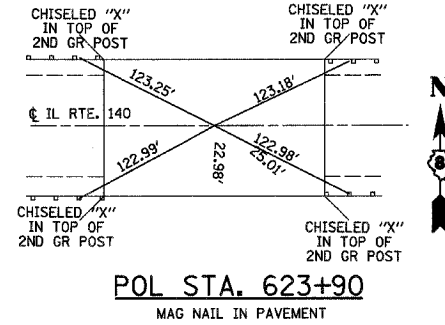
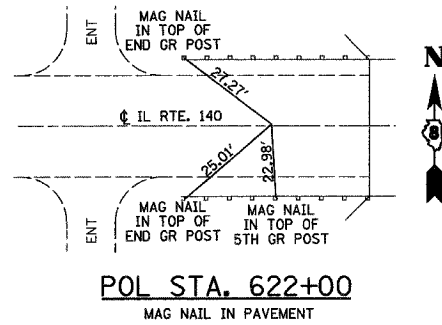
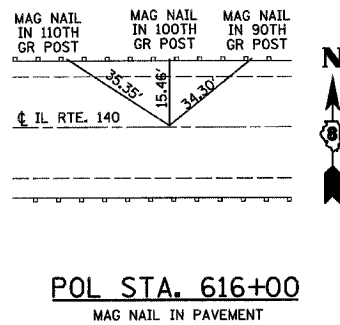
| | | | | |
|---------------------|-----------|------------------|--------------|-----------|
| F.A.P. RTE. | SECTION | COUNTY | TOTAL SHEETS | SHEET NO. |
| 785 | 134-1BR-2 | MADISON | 56 | 9 |
| STA. | | TO STA. | | |
| FED. ROAD DIST. NO. | ILLINOIS | FED. AID PROJECT | | |

PROPOSED GUARD RAIL

| LOCATION | SPBGR (SHORT RADIUS) (FOOT) | TRAF BAR TERM T6 (EACH) | SPBGR TY A (FOOT) | TR BAR TRM T1 SPL TAN (EACH) | TERMINAL MARKER - DA (EACH) | GUARDRAIL MKR TYPE A (EACH) |
|--|-----------------------------|-------------------------|-------------------|------------------------------|-----------------------------|-----------------------------|
| 15.0' RT. STA. 620+90.3 TO 16.0' RT. STA. 621+27.68 | | | 37.5 | | | 1 |
| 16.0' RT. STA. 621+27.68 TO 16.3' RT. STA. 621+40.18 | 12.5 | | | | | 1 |
| 16.3' RT. STA. 621+40.18 TO 33.5' RT. STA. 621+56.08 | 25 | | | | | |
| 33.5' RT. STA. 621+56.08 TO 46.0' RT. STA. 621+55.93 | 12.5 | | | | | |
| 41.5' RT. STA. 621+79.99 TO 28.9' RT. STA. 621+80.03 | 12.5 | | | | | 1 |
| 29.0' RT. STA. 621+80.10 TO 20.58' RT. STA. 621+89.35 | 13.5 | | | | | |
| 20.58' RT. STA. 621+89.35 TO 20.58' RT. STA. 622+01.85 | 12.5 | | | | | 1 |
| 20.58' RT. STA. 622+01.85 TO 20.58' RT. STA. 622+45 | | 1 | | | | |
| 20.58' RT. STA. 625+35 TO 20.58' RT. STA. 625+78.15 | | 1 | | | | 1 |
| 20.58' RT. STA. 625+78.15 TO 20.58' RT. STA. 626+21.65 | | | 43.5 | | | 1 |
| 20.58' RT. STA. 626+21.65 TO 17.8' RT. STA. 626+65.65 | | | 44 | | | 1 |
| 17.8' RT. STA. 626+65.65 TO 15.2' RT. STA. 627+15.65 | | | | 1 | 1 | 1 |
| 15.4' LT. STA. 619+11.27 TO 19.4' LT. STA. 621+17.68 | | | 206 | | | 3 |
| 19.4' LT. STA. 621+17.68 TO 19.5' LT. STA. 621+30.18 | 12.5 | | | | | 1 |
| 19.5' LT. STA. 621+30.18 TO 35.2' LT. STA. 621+46.83 | 25 | | | | | |
| 35.2' LT. STA. 621+46.83 TO 47.6' LT. STA. 621+47.83 | 12.5 | | | | | |
| 51.2' LT. STA. 621+72.2 TO 38.4' LT. STA. 621+71.8 | 12.5 | | | | | |
| 38.4' LT. STA. 621+71.8 TO 20.58' LT. STA. 621+89.35 | 29 | | | | | |
| 20.58' LT. STA. 621+89.35 TO 20.58' LT. STA. 622+01.85 | 12.5 | | | | | |
| 20.58' LT. STA. 622+01.85 TO 20.58' LT. STA. 622+45 | | 1 | | | | 1 |
| 20.58' LT. STA. 625+35 TO 20.58' LT. STA. 625+78.15 | | 1 | | | | 1 |
| 20.58' LT. STA. 625+78.15 TO 20.58' LT. STA. 626+21.65 | | | 43.5 | | | 1 |
| 20.58' LT. STA. 626+21.65 TO 17.7' LT. STA. 627+40.65 | | | 119 | | | 1 |
| 17.7' LT. STA. 627+40.65 TO 16.8' LT. STA. 627+90.65 | | | | 1 | 1 | 1 |
| TOTALS | 193 | 4 | 493.5 | 2 | 2 | 17 |

TRAFFIC CONTROL ITEMS

| STATION | STATION | TEMP PVT MK LINE 4 (FOOT) | TEMP PVT MK LINE 24 (FOOT) | WORK ZONE: PAVT MK REM (SQ FT) | TEMP CONC BARRIER (FOOT) | REL TEMP CONC BARRIER (FOOT) | IMP ATTN TEMP NRD TL3 (EACH) | IMP ATTN REL NRD TL3 (EACH) | TEMP RUMBLE STRIP (EACH) |
|------------------------------|-----------|---------------------------|----------------------------|--------------------------------|--------------------------|------------------------------|------------------------------|-----------------------------|--------------------------|
| STAGE 1 | | | | | | | | | |
| RT 598+65 | | | | | | | | | 1 |
| RT 605+65 | | | | | | | | | 1 |
| RT 612+65 | | | | | | | | | 1 |
| RT 619+65 | | | 11 | | | | | | |
| RT 619+65 | RT 627+70 | 805 | | 266 | | | | | |
| LT 620+60 | LT 627+28 | 668 | | 220 | | | | | |
| LT 621+90 | LT 622+20 | | | | | | 1 | | |
| LT 622+20 | LT 627+40 | | | | 520 | | | | |
| LT 627+40 | LT 627+70 | | | | | | 1 | | |
| LT 629+60 | | | 11 | | | | | | |
| LT 636+60 | | | | | | | | | 1 |
| LT 643+60 | | | | | | | | | 1 |
| LT 650+60 | | | | | | | | | 1 |
| STAGE 2 | | | | | | | | | |
| RT 619+65 | | | | 22 | | | | | |
| LT 619+88 | LT 629+60 | 972 | | 321 | | | | | |
| RT 620+83 | RT 627+29 | 646 | | 213 | | | | | |
| LT 621+90 | LT 622+20 | | | | | | | 1 | |
| LT 622+20 | LT 627+40 | | | | | 520 | | | |
| LT 627+40 | LT 627+70 | | | | | | | 1 | |
| LT 629+60 | | | | 22 | | | | | |
| SHORT-TERM PAVT MKING | | | | | | | | | |
| TOTAL | | 3091 | 22 | 1097 | 520 | 520 | 2 | 2 | 6 |



SURVEY TIE POINTS

| REVISIONS | | ILLINOIS DEPARTMENT OF TRANSPORTATION SCHEDULES AND SURVEY TIES FAP ROUTE 785 SECTION 134-1BR-2 MADISON COUNTY |
|-----------|------|--|
| NAME | DATE | |
| | | |
| | | |
| | | |
| | | |
| | | |
| | | |
| | | |
| | | |
| | | |
| | | |

PLOT DATE = 03/21/2007
 FILE NAME = H:\P\250694\Technical\Production\Structural\SN 859-6248\Microstation\Sch005a.dgn
 PLOT SCALE = 20.00000 / IN.
 USER NAME = 0USER6