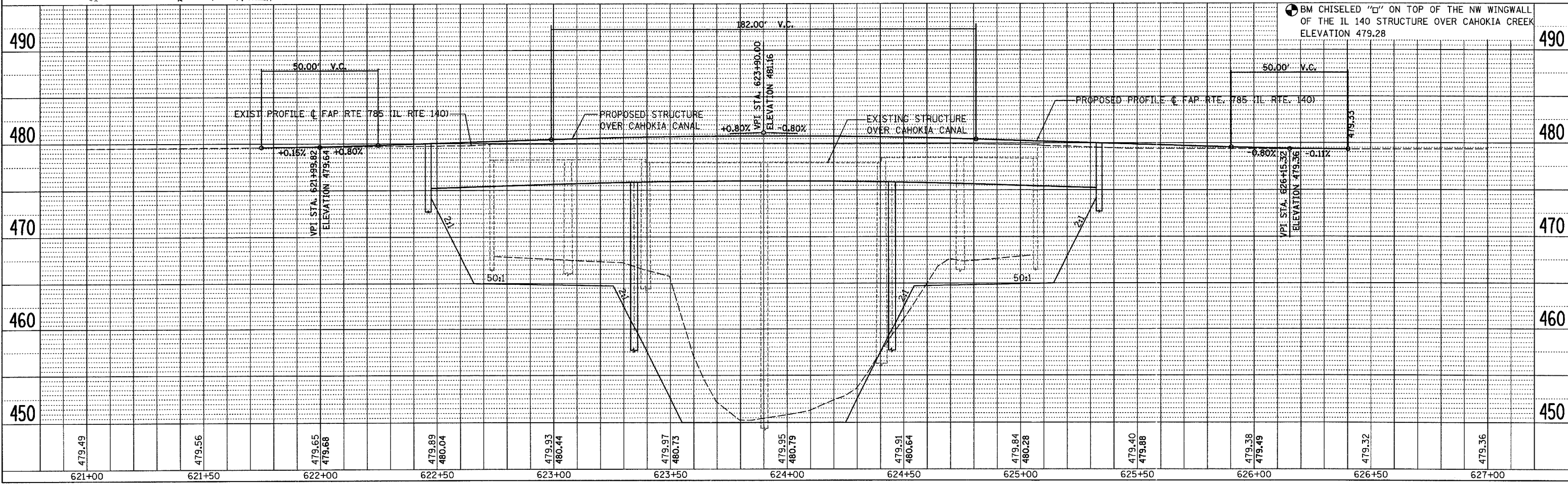
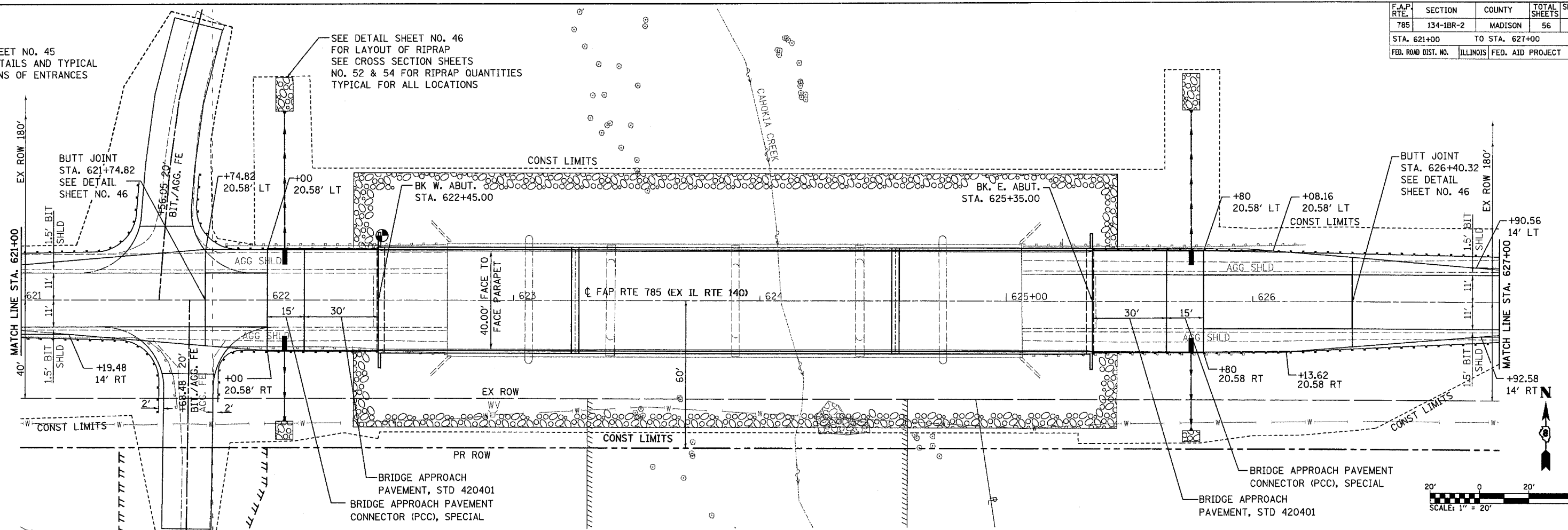


F.A.P. RTE.	SECTION	COUNTY	TOTAL SHEETS	SHEET NO.
785	134-1BR-2	MADISON	56	11
STA. 621+00		TO STA. 627+00		
FED. ROAD DIST. NO.		ILLINOIS FED. AID PROJECT		

SEE SHEET NO. 45
FOR DETAILS AND TYPICAL
SECTIONS OF ENTRANCES

SEE DETAIL SHEET NO. 46
FOR LAYOUT OF RIPRAP
SEE CROSS SECTION SHEETS
NO. 52 & 54 FOR RIPRAP QUANTITIES
TYPICAL FOR ALL LOCATIONS



DATE	
BY	
PLAN	
SURVEYED	
NOTE BOOK	
ALIGNED	
CHECKED	
BY	
NO. OF WAY CHECKED	
ROAD FILE NAME	

DATE	
BY	
FILE	
SURVEYED	
NOTE BOOK	
GRADES	
CHECKED	
BY	
NO. OF STRUCTURE	
NOTARIES	
OFFRD	

PLOT DATE = 03/21/2007
FILE NAME = H:\P\25094\Technical Production\Structural\SN 068-0248\Profile.dwg
PLOT SCALE = 20.0000 / IN
USER NAME = JUSER