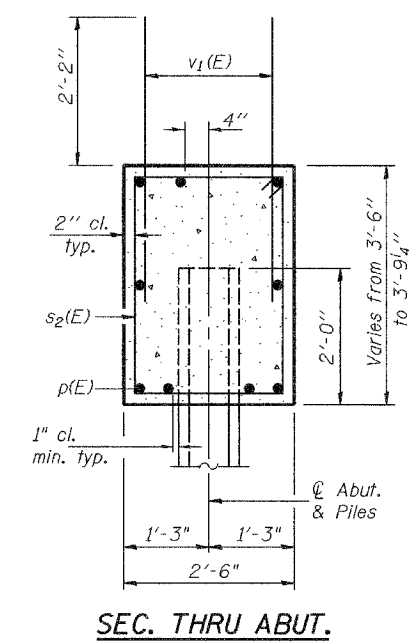
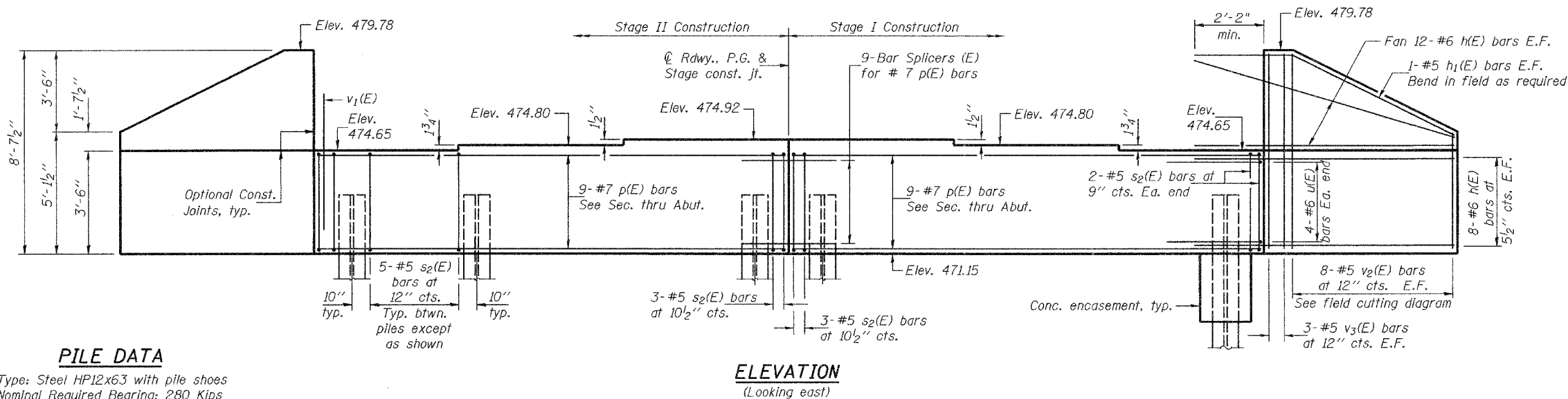


Notes: Pour steps monolithically with cap.  
 For bar splicer assembly details, see sheet 18 of 23.  
 For details of piles, see sheet 19 of 23.  
 If h(E) bars interfere with HP plies, cut h(E) to fit.

STATE OF ILLINOIS  
 DEPARTMENT OF TRANSPORTATION

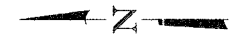
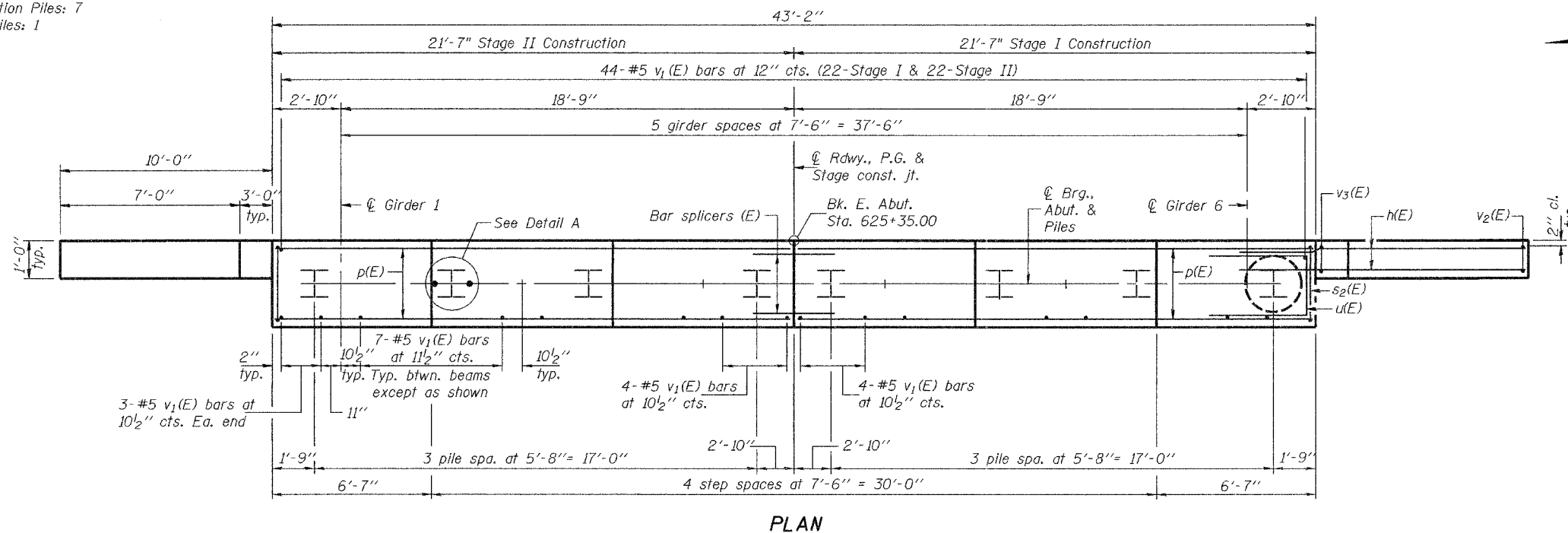
ROUTE NO.	SECTION	COUNTY	SHEETS	NO.	SHEET NO. 15
FAP 785	134-1BR-2	MADISON	36	56	23 SHEETS
FED. ROAD DIST. NO. 7	ILLINOIS	YEAR AND PROJECT			

Contract #76902



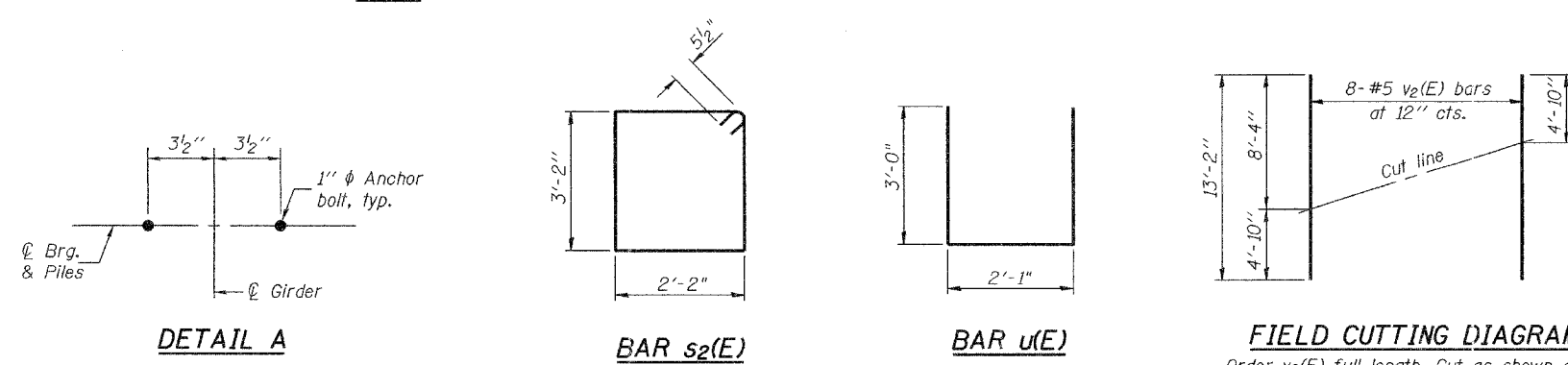
**PILE DATA**

Type: Steel HP12x63 with pile shoes  
 Nominal Required Bearing: 280 Kips  
 Factored Resistance Available: 140 Kips  
 Estimated Pile Length: 63'  
 No. Production Piles: 7  
 No. Test Piles: 1



**BILL OF MATERIAL**

Bar	No.	Size	Length	Shape
h(E)	80	#6	12'-0"	
h <sub>1</sub> (E)	4	#5	13'-0"	
p(E)	18	#7	21'-3"	
s <sub>2</sub> (E)	40	#5	11'-7"	
u(E)	8	#6	8'-1"	
v <sub>1</sub> (E)	86	#5	4'-4"	
v <sub>2</sub> (E)	16	#5	13'-2"	
v <sub>3</sub> (E)	12	#5	8'-4"	
Concrete Structures		Cu. Yd.	20.0	
Reinforcement Bars, Epoxy Coated		Pound	3570	
Structure Excavation		Cu. Yd.	104	
Furnishing Steel Piles HP12x63		Foot	441	
Driving Piles		Foot	441	
Test Pile Steel HP12x63		Each	1	
Pile Shoes		Each	8	
Concrete Encasement		Cu. Yd.	2.7	



DESIGNED	R.L. Thorp
CHECKED	N.R. Barnett
DRAWN	h.t. duong
CHECKED	RLT/NRB

April 9, 2007  
 EXAMINED *Thomas J. Demagala*  
 ENGINEER OF STRUCTURAL DESIGN  
 PASSED *Ralph E. Anderson*  
 ENGINEER OF BRIDGES AND STRUCTURES

**EAST ABUTMENT**  
 F.A.P. RTE. 785 - SEC. 134-1BR-2  
 MADISON COUNTY  
 STATION 623+90.00  
 STRUCTURE NO. 060-0240