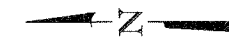


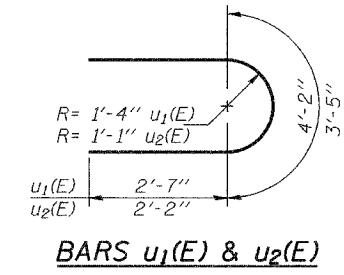
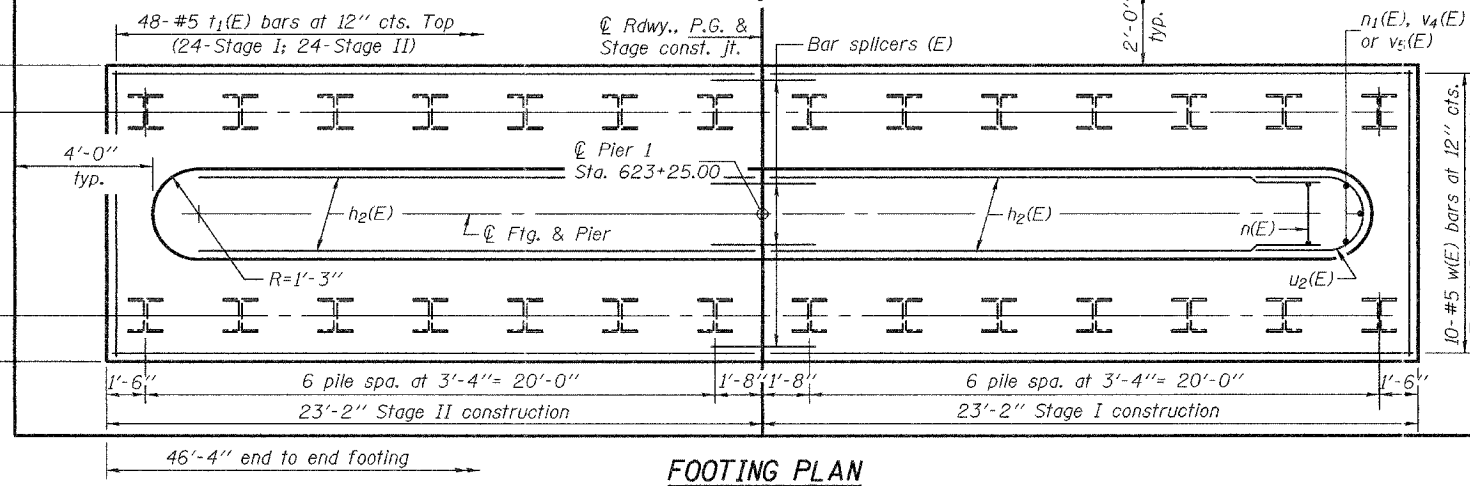
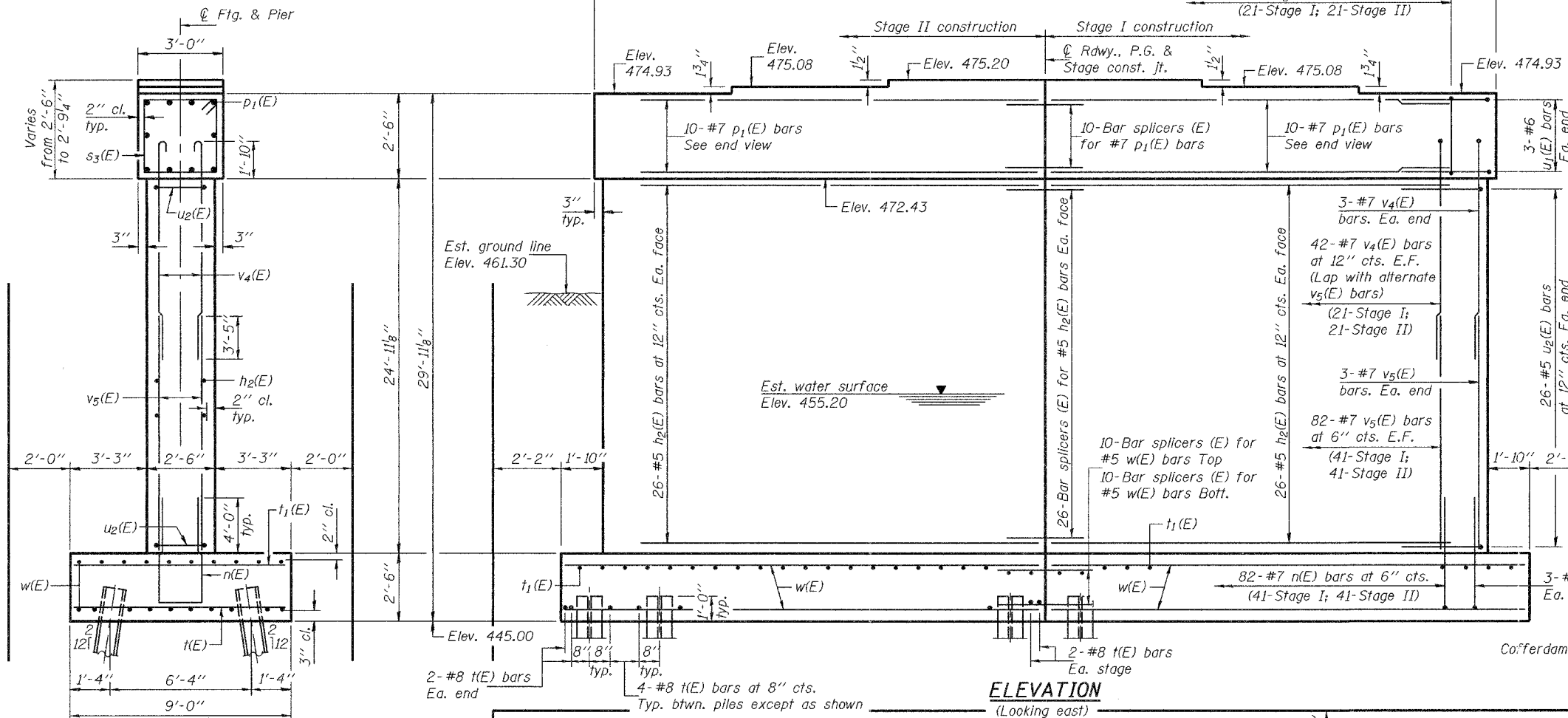
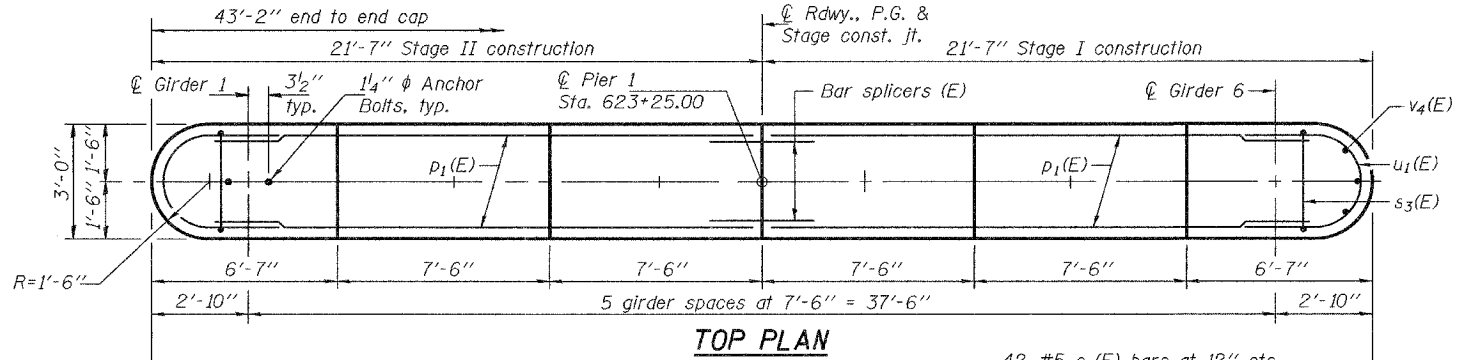
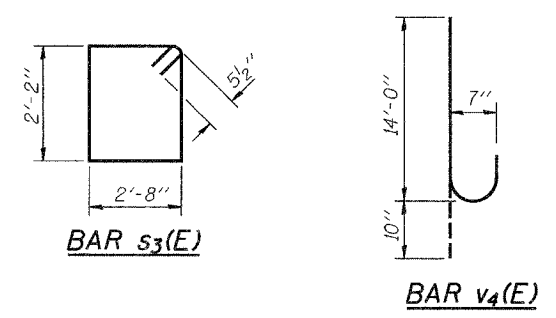
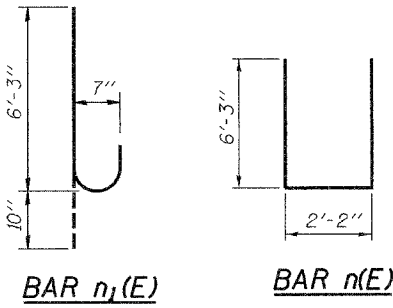
Notes: Space reinforcement in cap to miss anchor bolts.
 Pour steps monolithically with cap.
 For bar splicer details, see sheet 18 of 23.
 For details of piles, see sheet 19 of 23.

STATE OF ILLINOIS
 DEPARTMENT OF TRANSPORTATION



ROUTE NO.	SECTION	COUNTY	SHEET NO.	SHEET NO. 16
FAP 785	134-IBR-2	MADISON	37	50
FED. ROAD DIST. NO. 7		ILLINOIS	FED. AID PROJECT-	23 SHEETS

Contract #76902



BILL OF MATERIAL

Bar	No.	Size	Length	Shape
$h_2(E)$	104	#5	19'-11"	—
$n(E)$	82	#7	14'-8"	U
$n_1(E)$	6	#7	7'-1"	U
$p_1(E)$	20	#7	19'-11"	—
$s_3(E)$	42	#5	10'-7"	□
$t(E)$	56	#8	8'-8"	—
$t_1(E)$	48	#5	8'-8"	—
$u_1(E)$	6	#6	9'-4"	U
$u_2(E)$	52	#5	7'-9"	U
$v_4(E)$	90	#7	14'-10"	U
$v_5(E)$	170	#7	16'-0"	—
$w(E)$	40	#5	22'-10"	—
Concrete Structures		Cu. Yd.	148.4	
Reinforcement Bars, Epoxy Coated		Pound	17460	
Furnishing Steel Piles HP12x63		Foot	1917	
Driving Piles HP12x63		Foot	1917	
Test Pile Steel HP12x63		Each	1	
Pile Shoes		Each	28	
Cofferdam (Location D)		Each	1	
Cofferdam Excavation		Cu. Yd.	398	

PILE DATA

Type: Steel HP12x63 with pile shoes
 Nominal Required Bearing: 422 kips
 Factored Resistance Available: 211 kips
 Est. Pile Length: 71'
 No. Production Piles: 27
 No. Test Piles: 1

DESIGNED	R.L. Thorp
CHECKED	N.R. Barnett
DRAWN	h.t. duong
CHECKED	RLT/NRB

April 9, 2007
 EXAMINED *Thomas J. Demagalli*
 ENGINEER OF BRIDGE DESIGN
 PASSED *Ralph E. Anderson*
 ENGINEER OF BRIDGES AND STRUCTURES

PIER 1
 F.A.P. RTE. 785 - SEC. 134-IBR-2
 MADISON COUNTY
 STATION 623+90.00
 STRUCTURE NO. 060-0240