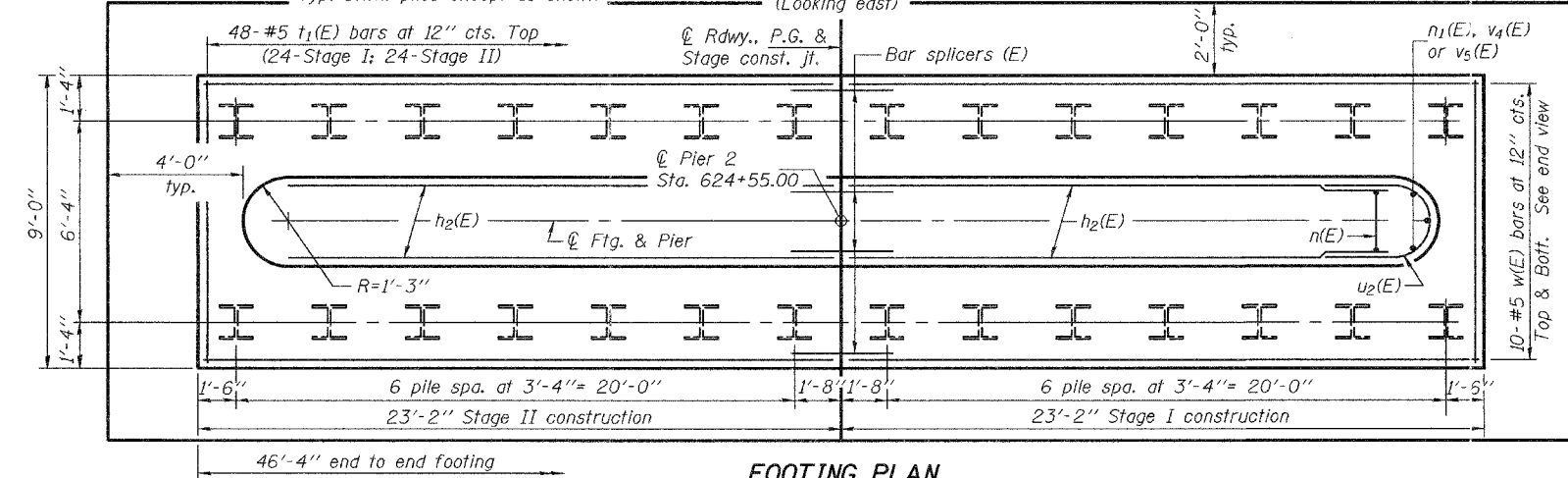
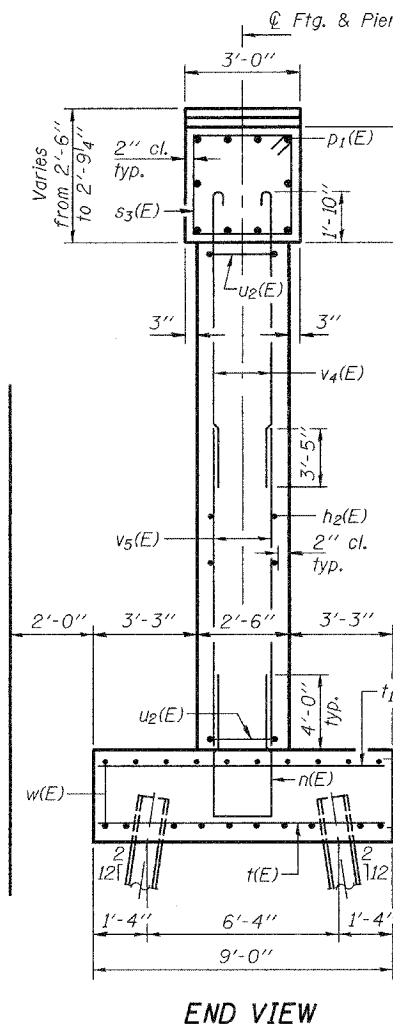
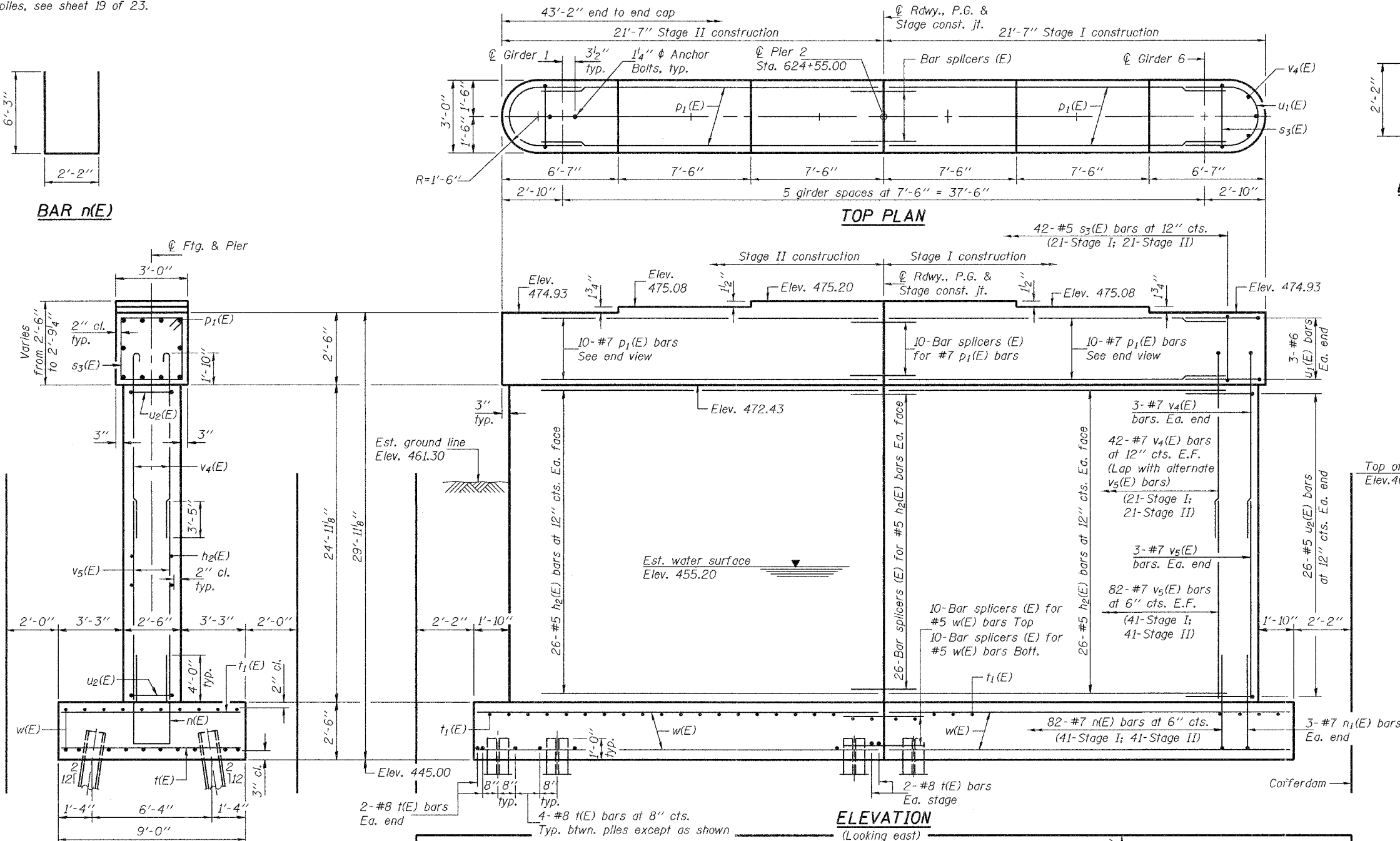
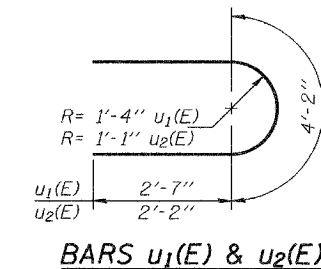
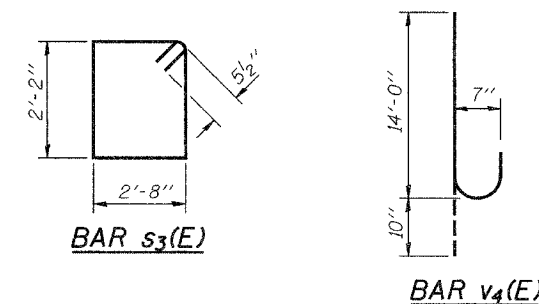
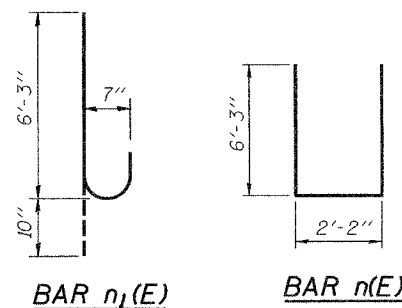


Notes: Space reinforcement in cap to miss anchor bolts.  
 Pour steps monolithically with cap.  
 For bar splicer details, see sheet 18 of 23.  
 For details of piles, see sheet 19 of 23.

STATE OF ILLINOIS  
 DEPARTMENT OF TRANSPORTATION

ROUTE NO.	SECTION	COUNTY	STATION	SHEET NO.	SHEET NO. 17
FAP 785	134-IBR-2	MADISON	38	50	23 SHEETS
FED. ROAD DIST. NO. 7		ILLINOIS		FED. AID PROJECT	

Contract #76902



**BILL OF MATERIAL**

Bar	No.	Size	Length	Shape
h <sub>2</sub> (E)	104	#5	19'-11"	—
n(E)	82	#7	14'-8"	U
n <sub>1</sub> (E)	6	#7	7'-1"	U
p <sub>1</sub> (E)	20	#7	19'-11"	—
s <sub>3</sub> (E)	42	#5	10'-7"	□
t(E)	56	#8	8'-8"	—
t <sub>1</sub> (E)	48	#5	8'-8"	—
u <sub>1</sub> (E)	6	#6	9'-4"	U
u <sub>2</sub> (E)	52	#5	7'-9"	U
v <sub>4</sub> (E)	90	#7	14'-10"	U
v <sub>5</sub> (E)	170	#7	16'-0"	—
w(E)	40	#5	22'-10"	—
Concrete Structures			Cu. Yd.	148.4
Reinforcement Bars, Epoxy Coated			Pound	17460
Furnishing Steel Piles HP12x63			Foot	1404
Driving Piles			Foot	1404
Test Pile Steel HP12x63			Each	1
Pile Shoes			Each	28
Cofferdam (Location 2)			Each	1
Cofferdam Excavation			Cu. Yd.	398

**PILE DATA**

Type: Steel HP12x63 with pile shoes  
 Nominal Required Bearing: 422 kips  
 Factored Resistance Available: 211 kips  
 Est. Pile Length: 52'  
 No. Production Piles: 27  
 No. Test Piles: 1

DESIGNED	R.L. Tharp
CHECKED	N.R. Barnett
DRAWN	h.t. duong
CHECKED	RLT/NRB

April 9, 2007  
 EXAMINED *Thomas J. Damagalki*  
 ENGINEER OF BRIDGE DESIGN  
 PASSED *Ralph E. Anderson*  
 ENGINEER OF BRIDGES AND STRUCTURES

**PIER 2**  
 F.A.P. RTE. 785 - SEC. 134-IBR-2  
 MADISON COUNTY  
 STATION 623+90.00  
 STRUCTURE NO. 060-0240