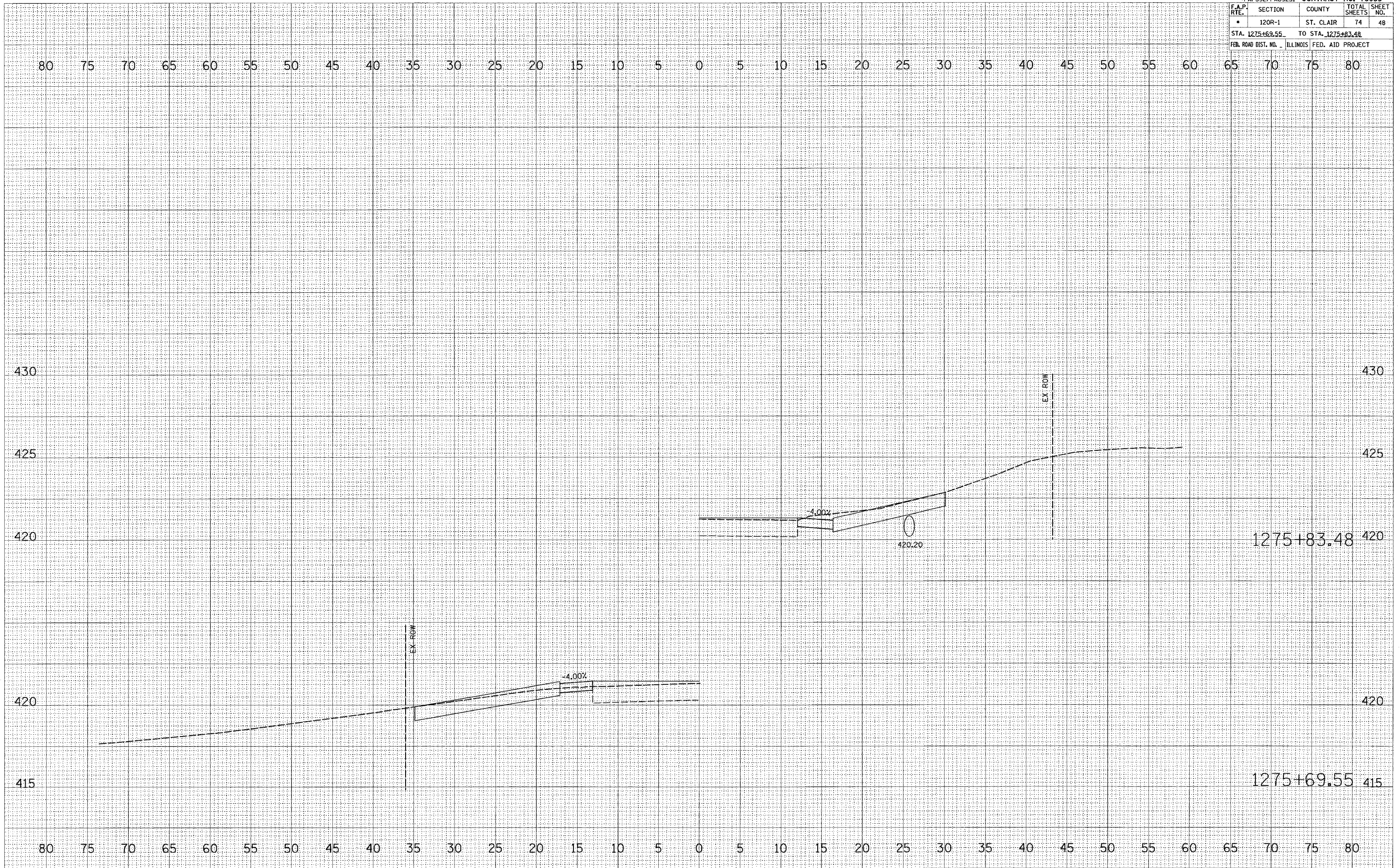


*FAP592/FAU9251		CONTRACT NO. 76959	
F.A.P. RTE.	SECTION	COUNTY	TOTAL SHEETS
•	120R-1	ST. CLAIR	74
STA. 1275+69.55		TO STA. 1275+83.48	
FED. ROAD DIST. NO. _____		ILLINOIS FED. AID PROJECT	

BY	DATE
FINAL SURVEY NOTE BOOK NO.	SURVEYED, PLOTTED, TEMPLATE, AREAS CHECKED

BY	DATE
ORIGINAL SURVEY NOTE BOOK NO.	REVISIONS

PLOT DATE = 4/6/2007
 PLOT SCALE = 5/8" = 1' IN.
 USER NAME = dmshelton



STAGE TWO NORTH LEG