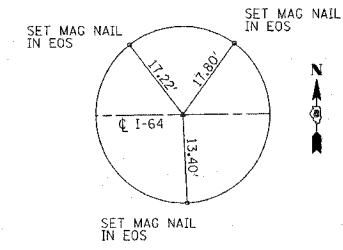


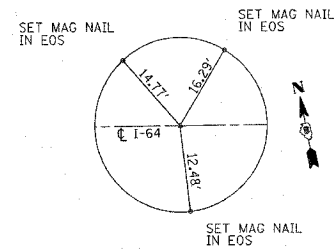
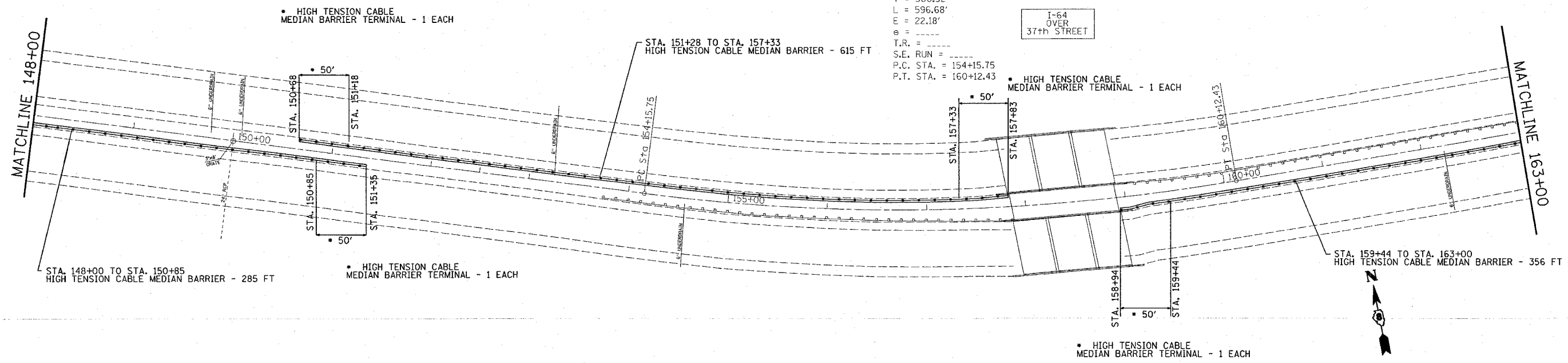
F.A.I. RTE.	SECTION	COUNTY	TOTAL SHEETS	SHEET NO.
64	82-(1,2,3,4)I-1	ST. CLAIR	42	12
STA.		TO STA.		
FED. ROAD DIST. NO.		ILLINOIS FED. AID PROJECT		



PT STATION 160+12.34
SET I.P. WITH CAP

EXIST. CURVE 4
PI STA. = 157+16.27
 $\Delta = 16^\circ 52' 57''$ (L.T.)
 $D = 2^\circ 49' 46''$
 $R = 2,025.00'$
 $T = 300.52'$
 $L = 596.68'$
 $E = 22.18'$
 $\theta = \dots$
T.R. = \dots
S.E. RUN = \dots
P.C. STA. = 154+15.75
P.T. STA. = 160+12.43

I-64
OVER
37th STREET



PC STATION 154+15.75
SET I.P. WITH CAP

REVISIONS	
NAME	DATE

ILLINOIS DEPARTMENT OF TRANSPORTATION
PLAN VIEW
FAI RTE 64
SECTION 82-(1,2,3,4)I-1
ST. CLAIR COUNTY

SCALE: VERT.
HORIZ.
DATE

DRAWN BY
CHECKED BY

PLOT DATE =
DATE =
PLOT SCALE =
SCALE =
REFERENCE =