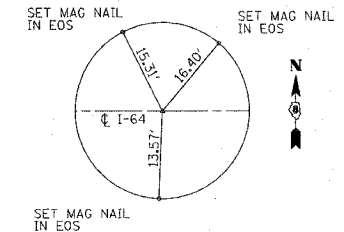
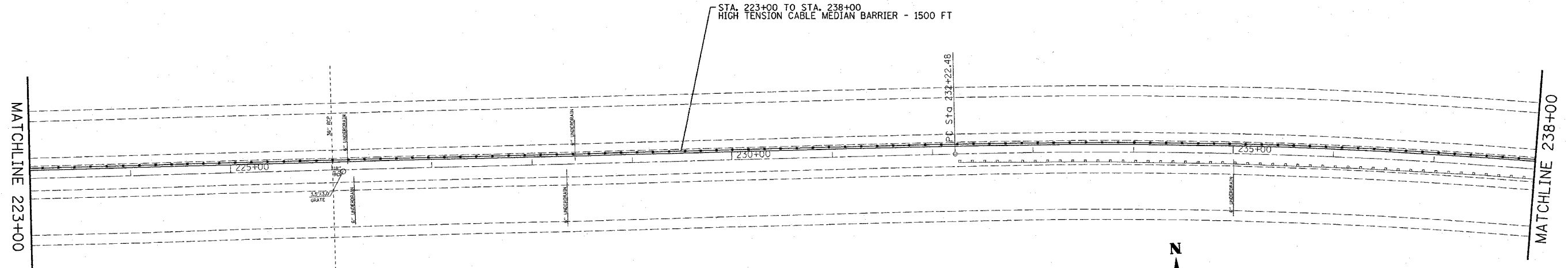


F.A.I. RTE.	SECTION	COUNTY	TOTAL SHEETS	SHEET NO.
64	82-(1,2,3,4)I-1	ST. CLAIR	42	17
STA.		TO STA.		
FED. ROAD DIST. NO.		ILLINOIS	FED. AID PROJECT	



PC STATION 232+22.48  
SET I.P. WITH CAP



STA. 223+00 TO STA. 238+00  
HIGH TENSION CABLE MEDIAN BARRIER - 1500 FT



BM: ELEV. 421.74 STA. 228+50  
CHISELED 'X' ON WEST SIDE OF CONC. LIGHT POLE FOUNDATION

REVISIONS		ILLINOIS DEPARTMENT OF TRANSPORTATION
NAME	DATE	
		<b>PLAN VIEW</b>  FAI RTE 64 SECTION 82-(1,2,3,4)I-1 ST. CLAIR COUNTY  SCALE: VERT. _____ HORIZ. _____ DATE _____ DRAWN BY _____ CHECKED BY _____

PLOT DATE = #DATE#  
FILE NAME = #FILE#  
PLOT SCALE = #SCALE#  
REFERENCE = #REF#