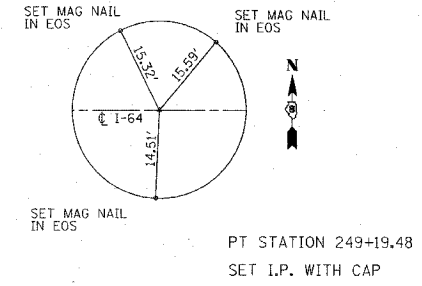


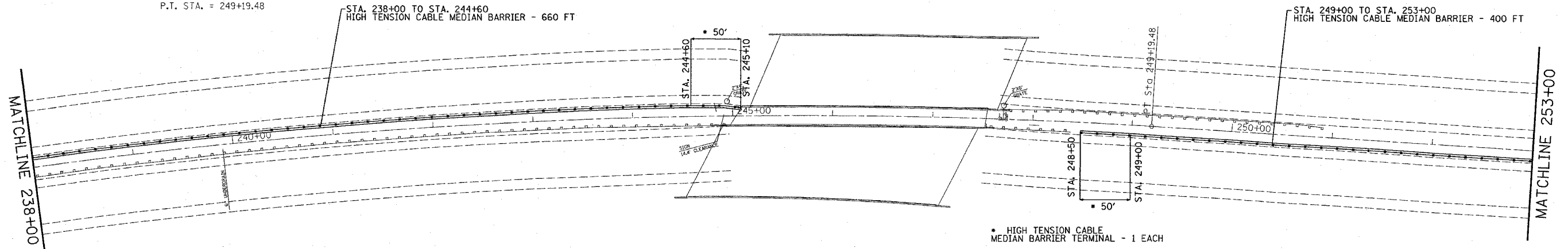
F.A.I. RTE.	SECTION	COUNTY	TOTAL SHEETS	SHEET NO.
64	82-(1,2,3,4)I-1	ST. CLAIR	42	18
STA.		TO STA.		
FED. ROAD DIST. NO.		ILLINOIS FED. AID PROJECT		



EXIST. CURVE 7
 PI STA. = 240+77.24
 $\Delta = 16^\circ 58' 12''$ (RT)
 $D = 1^\circ 00' 00''$
 $R = 5,729.58'$
 $T = 854.76'$
 $L = 1,697.00'$
 $E = 63.41'$
 $e = \text{-----}$
 $T.R. = \text{-----}$
 $S.E. \text{ RUN} = \text{-----}$
 $P.C. \text{ STA.} = 232+22.48$
 $P.T. \text{ STA.} = 249+19.48$

I-64
 OVER
 ALTON & SOUTHERN RR

* HIGH TENSION CABLE
 MEDIAN BARRIER TERMINAL - 1 EACH



STA. 238+00 TO STA. 244+60
 HIGH TENSION CABLE MEDIAN BARRIER - 660 FT

STA. 249+00 TO STA. 253+00
 HIGH TENSION CABLE MEDIAN BARRIER - 400 FT

* HIGH TENSION CABLE
 MEDIAN BARRIER TERMINAL - 1 EACH

PLOT DATE * * * * *
 FILE NAME * * * * *
 SCALE * * * * *
 REFERENCE * * * * *

REVISIONS		ILLINOIS DEPARTMENT OF TRANSPORTATION
NAME	DATE	
		PLAN VIEW FAI RTE 64 SECTION 82-(1,2,3,4)I-1 ST. CLAIR COUNTY SCALE: VERT. _____ HORIZ. _____ DATE _____
		DRAWN BY _____ CHECKED BY _____