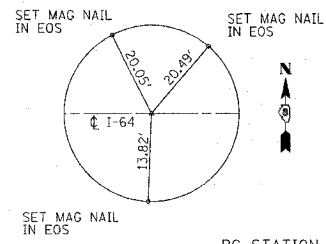
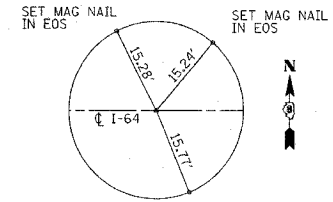


F.A.I. RTE.	SECTION	COUNTY	TOTAL SHEETS	SHEET NO.
64	82-(1,2,3,4)I-1	ST. CLAIR	42	19
STA.		TO STA.		
FED. ROAD DIST. NO.	ILLINOIS	FED. AID PROJECT		



PC STATION 256+28.24
SET I.P. WITH CAP



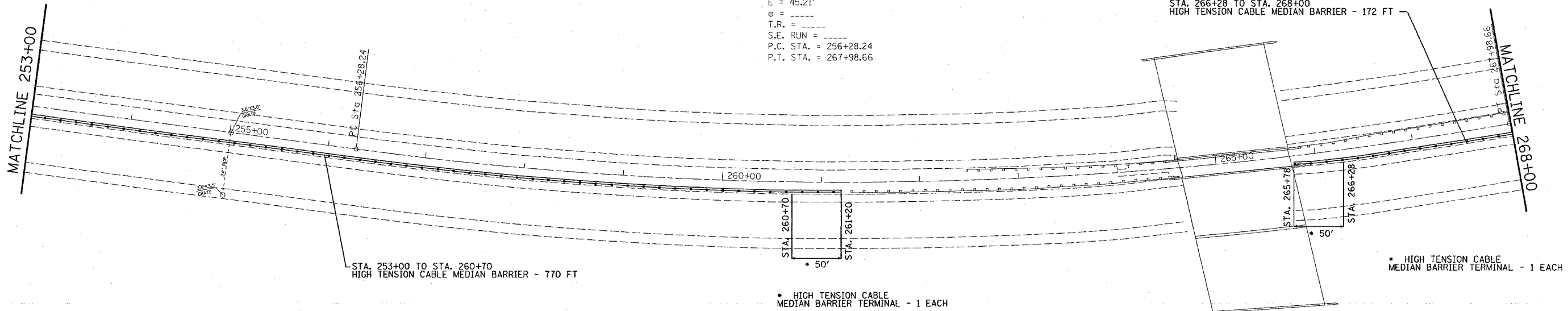
PT STATION 267+98.66
SET I.P. WITH CAP



EXIST. CURVE 8
PI STA. = 262+18.06
 $\Delta = 17^\circ 31' 55''$ (LT)
D = $1^\circ 29' 53''$
R = 3,825.00'
T = 589.82'
L = 1,170.42'
E = 45.21'
e = -----
T.R. = -----
S.E. RUN = -----
P.C. STA. = 256+28.24
P.T. STA. = 267+98.66

I-64
OVER
HARDING DITCH

STA. 266+28 TO STA. 268+00
HIGH TENSION CABLE MEDIAN BARRIER - 172 FT



• HIGH TENSION CABLE
MEDIAN BARRIER TERMINAL - 1 EACH

• HIGH TENSION CABLE
MEDIAN BARRIER TERMINAL - 1 EACH

REVISIONS	
NAME	DATE

ILLINOIS DEPARTMENT OF TRANSPORTATION
PLAN VIEW
FAI RTE 64
SECTION 82-(1,2,3,4)I-1
ST. CLAIR COUNTY

SCALE: VERT.
HORIZ.
DATE

DRAWN BY
CHECKED BY

PLOT DATE = #DATE#
SCALE = #SCALE#
PLOT SCALE = #SCALE#
REFERENCE = #REF#