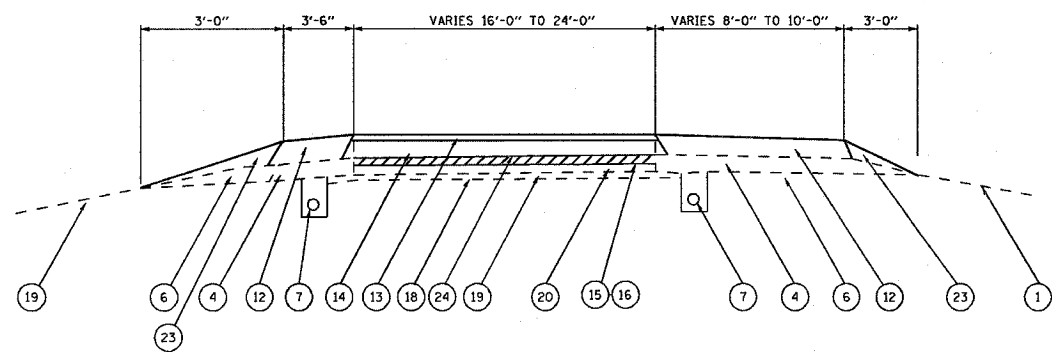
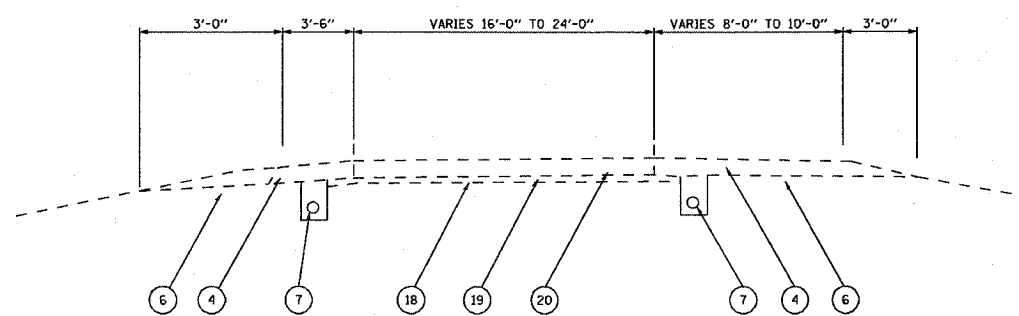


F.A.I. RTE.	SECTION	COUNTY	TOTAL SHEETS	SHEET NO.
•	••	MADISON	37	7

STA.	TO STA.
FED. ROAD DIST. NO.	ILLINOIS FED. AID PROJECT
•-255-55/70	••(60-7, 60-9)RS AND 60-16-1,7-1)RS



LOCATION #1
TYPICAL SECTION - RAMPS 1 & 2
STA. 101+70 TO STA. 161+40 (RAMP 1)
STA. 200+00 TO STA. 232+26 (RAMP 2)



LOCATION #1
TYPICAL SECTION - RAMPS 3,4,5,6, ROADWAY "A" & ROADWAY "B"
STA. 301+00 TO STA. 315+54 (RAMP 3)
STA. 400+00 TO STA. 414+16 (RAMP 4)
STA. 500+00 TO STA. 519+40 (RAMP 5)
STA. 600+40 TO STA. 619+420 (RAMP 6)
STA. 699+90 TO STA. 738+77 (ROADWAY "A")
STA. 800+00 TO STA. 807+04 (ROADWAY "B")

LEGEND

- ① EXISTING CRPCC PAVEMENT - 10"
- ② EXISTING STABILIZED SUB-BASE - 4"
- ③ EXISTING HOT- MIX ASPHALT SHOULDERS - 9"
- ④ EXISTING HOT- MIX ASPHALT SHOULDERS - 10"
- ⑤ EXISTING HOT- MIX ASPHALT SHOULDERS - 11"
- ⑥ EXISTING AGGREGATE SHOULDERS, TYPE B
- ⑦ EXISTING PIPE UNDERDRAINS
- ⑧ EXISTING BITUMINOUS CURB
- ⑨ EXISTING JRPCC PAVEMENT - 11"
- ⑩ EXISTING TYPE A GUTTER
- ⑪ EXISTING HOT- MIX ASPHALT CONCRETE - 3"
- ⑫ PROPOSED HOT- MIX ASPHALT SHOULDERS - 3 3/4"
- ⑬ PROPOSED POLYMERIZED BCSC SUPER "E" N70 - 1 1/2"
- ⑭ PROPOSED POLYMERIZED BCSC SUPER IL19.0 N70 - 2 1/4"
- ⑮ PROPOSED POLYMERIZED BITUMINOUS MATERIALS - PRIME COAT
- ⑯ PROPOSED AGGREGATE PRIME COAT
- ⑰ EMBANKMENT
- ⑱ SUB-GRADE
- ⑲ STABILIZED SUB-BASE 4"
- ⑳ PCC PAVEMENT 10"
- ㉑ HOT- MIX ASPHALT SHOULDERS 10"
- ㉒ AGGREGATE SHOULDERS TYPE B
- ㉓ PROPOSED AGGREGATE SHOULDERS TYPE B
- ㉔ PCC SURFACE REM (CM) - 1/2"
- ㉕ PCC SURFACE REM (CM) - 2"
- ㉖ HOT MIX ASPHALT SURFACE REMOVAL - 2"
- ㉗ PROPOSED HOT-MIX ASPHALT SHOULDERS - 2"
- ㉘ HOT-MIX ASPHALT SURFACE REMOVAL - 1/2"

LOCATION #1

ILLINOIS DEPARTMENT OF TRANSPORTATION
TYPICAL SECTIONS

FAI 255, FAI 55/70
SECTION (60-7, 60-9)RS &
60-(6-1,7-1)RS
MADISON COUNTY

SCALE: VERT. DRAWN BY
 HORIZ. CHECKED BY
DATE

REVISIONS	
NAME	DATE