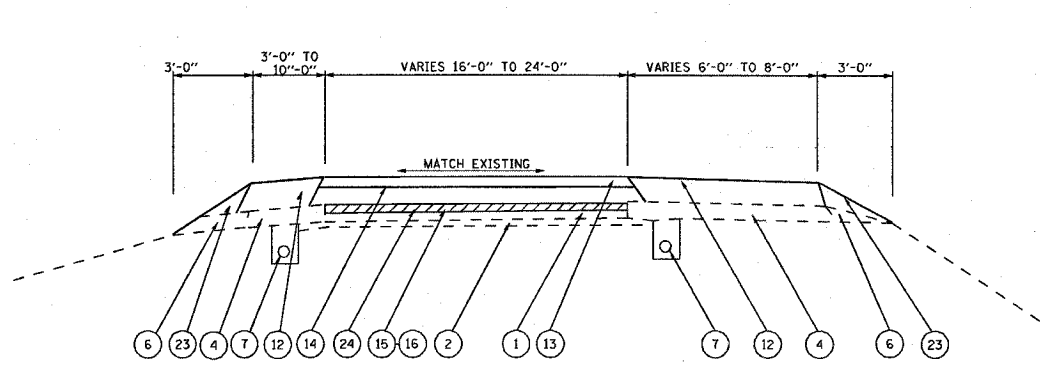
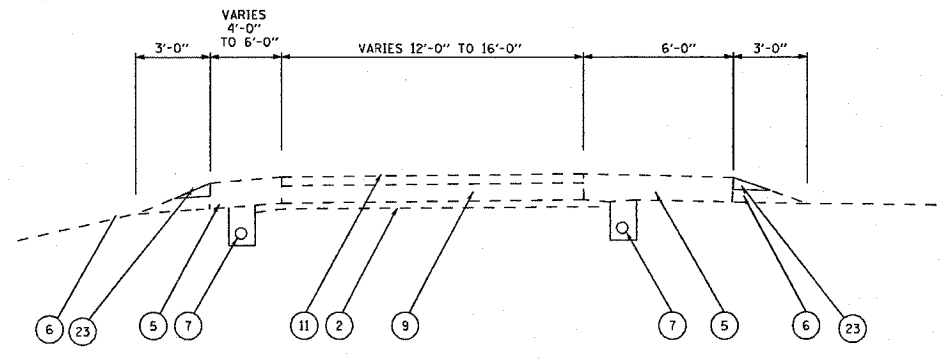


F.A.I. RTE.	SECTION	COUNTY	TOTAL SHEETS	SHEET NO.
*	**	MADISON	37	9
STA. TO STA.		FED. ROAD DIST. NO. ILLINOIS FED. AID PROJECT		
*255-55/70		**60-7, 60-9IRS AND 60-16-1,7-1RS		



LOCATION #2  
TYPICAL SECTION - RAMP 6  
STA. 693+63 TO STA. 792+00



LOCATION #2  
TYPICAL SECTION - RAMPS 2, 4, 5, & 8  
STA. 212+58 TO STA. 231+00 (RAMP 2)  
STA. 462+62 TO STA. 485+46 (RAMP 4)  
STA. 580+00 TO STA. 613+93 (RAMP 5)  
STA. 872+40 TO STA. 885+00 (RAMP 8)

**LEGEND**

- ① EXISTING CRPCC PAVEMENT - 10"
- ② EXISTING STABILIZED SUB-BASE - 4"
- ③ EXISTING HOT-MIX ASPHALT SHOULDERS - 9"
- ④ EXISTING HOT-MIX ASPHALT SHOULDERS - 10"
- ⑤ EXISTING HOT-MIX ASPHALT SHOULDERS - 11"
- ⑥ EXISTING AGGREGATE SHOULDERS, TYPE B
- ⑦ EXISTING PIPE UNDERDRAINS
- ⑧ EXISTING BITUMINOUS CURB
- ⑨ EXISTING JRPCC PAVEMENT - 11"
- ⑩ EXISTING TYPE A GUTTER
- ⑪ EXISTING HOT-MIX ASPHALT CONCRETE - 3"
- ⑫ PROPOSED HOT-MIX ASPHALT SHOULDERS - 3 3/4"
- ⑬ PROPOSED POLYMERIZED BCBC SUPER "E" N70 - 1 1/2"
- ⑭ PROPOSED POLYMERIZED BCBC SUPER IL19.0 N70 - 2 1/4"
- ⑮ PROPOSED POLYMERIZED BITUMINOUS MATERIALS - PRIME COAT
- ⑯ PROPOSED AGGREGATE PRIME COAT
- ⑰ EMBANKMENT
- ⑱ SUB-GRADE
- ⑲ STABILIZED SUB-BASE 4"
- ⑳ PCC PAVEMENT 10"
- ㉑ HOT-MIX ASPHALT SHOULDERS 10"
- ㉒ AGGREGATE SHOULDERS TYPE B
- ㉓ PROPOSED AGGREGATE SHOULDERS TYPE B
- ㉔ PCC SURFACE REM (CM) - 1/2"
- ㉕ PCC SURFACE REM (CM) - 2"
- ㉖ HOT MIX ASPHALT SURFACE REMOVAL - 2"
- ㉗ PROPOSED HOT-MIX ASPHALT SHOULDERS - 2"
- ㉘ HOT-MIX ASPHALT SURFACE REMOVAL - 1/2"

REVISIONS	
NAME	DATE

LOCATION #2  
ILLINOIS DEPARTMENT OF TRANSPORTATION  
TYPICAL SECTIONS  
LOCATION #2  
FAI 255, FAI 55/70  
SECTION (60-7, 60-9IRS &  
60-16-1,7-1RS  
MADISON COUNTY  
SCALE: VERT.      DRAWN BY  
      HORIZ.        CHECKED BY  
DATE

PLOT DATE: 5/11/2007  
PLOT SCALE: 1/8" = 1'-0"  
REFERENCE: \*REF\*