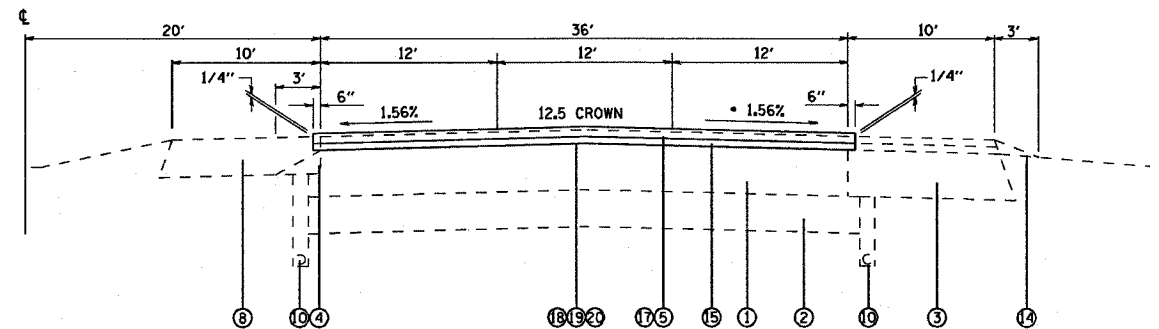
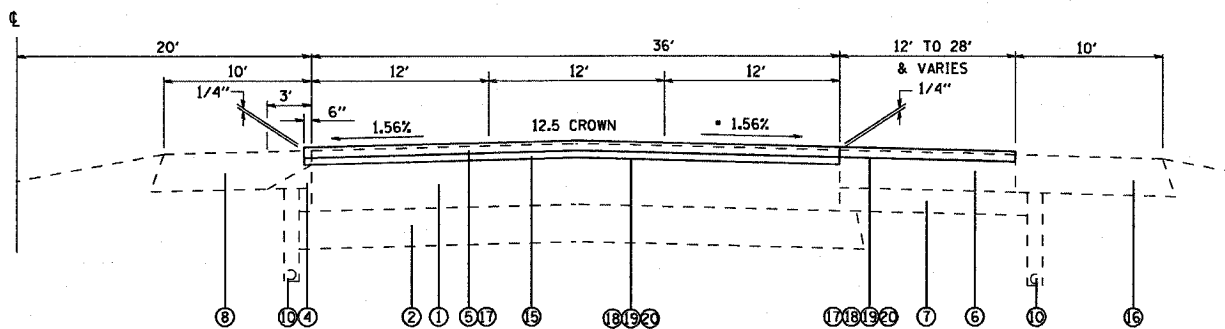


F.A.I. RTE.	SECTION	COUNTY	TOTAL SHEETS	SHEET NO.
*	**	MADISON	37	31
STA.		TO STA.		
FED. ROAD DIST. NO.	ILLINOIS	FED. AID PROJECT		
**255-55/70				
**60-7, 60-9IRS AND 60-16-1,7-1RS				



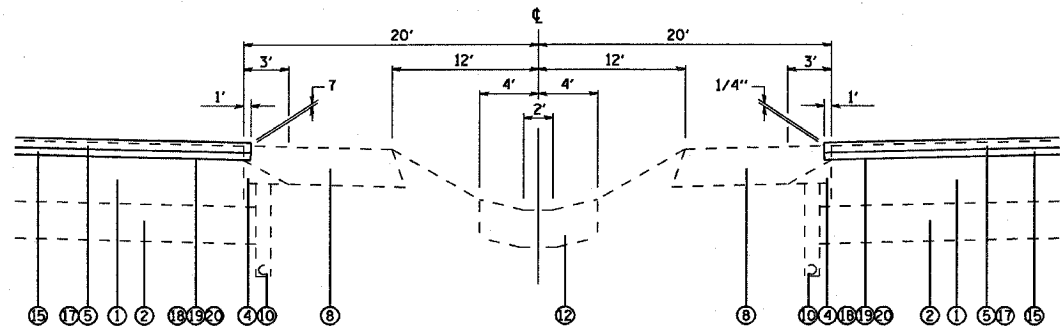
TYPICAL HALF SECTION
378+13 TO 513+06 WB

NOTE: EXISTING RESURFACING SHALL BE REMOVED, DEPTH = 2"



HALF SECTION WITH AUXILIARY LANE OR RAMP TAPER
378+13 TO 513+06 WB

NOTE: ALL EXISTING RESURFACING SHALL BE REMOVED, DEPTH = 2"



MEDIAN SECTION WITH PAVED DITCH
499+51 TO 513+06

NOTE: EXISTING RESURFACING SHALL BE REMOVED, DEPTH = 2"

LEGEND

- ① EXIST. P.C.C. PAVEMENT WITH PAVEMENT FABRIC
- ② EXIST. COMPACTED DEPTH SUB-BASE GRANULAR MATERIAL
- ③ EXIST. GRAVEL OR CRUSHED STONE SHOULDER, TYPE "A"
- ④ EXIST. GRAVEL OR CRUSHED STONE SHOULDER, TYPE "B"
- ⑤ EXIST. BITUMINOUS CONCRETE SURFACE COURSE, MIX E, CLASS 1, 38
- ⑥ EXIST. REINFORCED JOINTED P.C.C. PAVEMENT
- ⑦ EXIST. STABILIZED SUBBASE
- ⑧ EXIST. BITUMINOUS SHOULDERS
- ⑨ EXIST. PIPE CULVERT, TYPE 2, R.C.C.P.
- ⑩ EXIST. UNDERDRAIN
- ⑪ EXIST. PIPE DRAIN
- ⑫ EXIST. P.C.C. PAVED DITCH
- ⑬ EXIST. MEDIAN INLET, STANDARD 2240
- ⑭ EXIST. AGGREGATE SHOULDER, TYPE "B"
- ⑮ EXIST. LEVELING BINDER (MACHINE METHOD), 1.75"
- ⑯ EXIST. BITUMINOUS SHOULDERS
- ⑰ PROPOSED BITUMINOUS CONCRETE SURFACE COURSE, PSMA 2"
- ⑱ PROPOSED BITUMINOUS MATERIALS (PRIME COAT)
- ⑲ PROPOSED AGGREGATE (PRIME COAT)
- ⑳ PROPOSED MILLING 2"

NOT TO SCALE

REVISIONS		ILLINOIS DEPARTMENT OF TRANSPORTATION TYPICAL SECTIONS LOCATION #3 FAI 255, FAI 55/70 SECTION (60-7, 60-9)RS & 60-(6-1,7-1)RS MADISON COUNTY
NAME	DATE	

SCALE: VERT. _____
HORIZ. _____
DATE _____ DRAWN BY _____
CHECKED BY _____

PLOT DATE: 5/11/2007
 FILE NAME: c:\pcc\project\808307\ecod\pcc\08307a.dgn
 PLOT SCALE: 500000
 USER NAME: aforadb