

F.A.I. RTE.	SECTION	COUNTY	TOTAL SHEETS	SHEET NO.
255-55/70	**	MADISON	37	1

**60-7, 60-9)RS AND 60-(6-1,7-1)RS

STATE OF ILLINOIS
DEPARTMENT OF TRANSPORTATION
DIVISION OF HIGHWAYS

**PROPOSED
HIGHWAY PLANS**

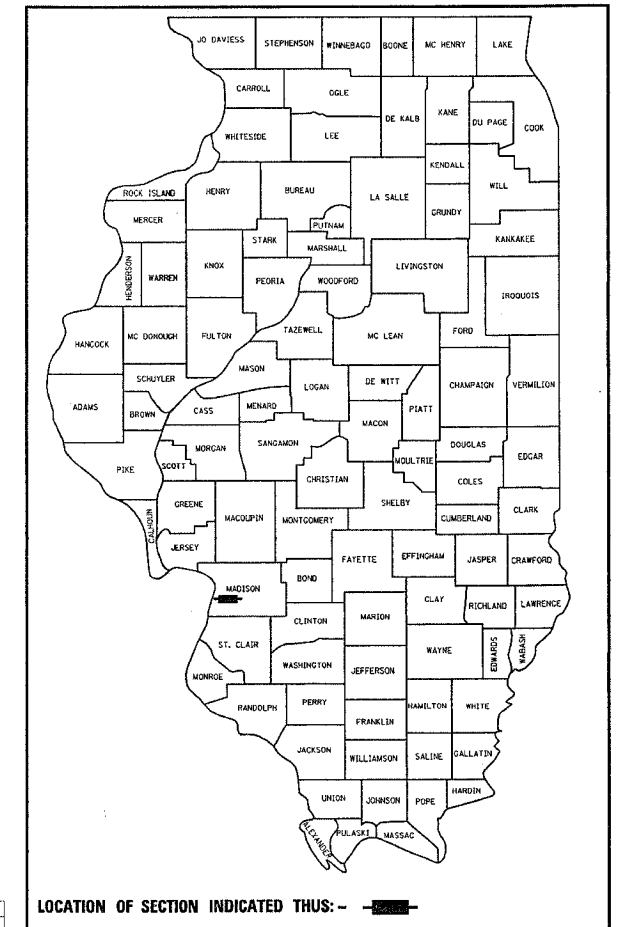
FAI ROUTE 255 & FAI 55/70, I-255 & I-55/70
SECTION (60-7, 60-9)RS & 60-(6-1,7-1)rs

PROJECT INTERCHANGE & INTERSTATE
RESURFACING, AND PATCHING

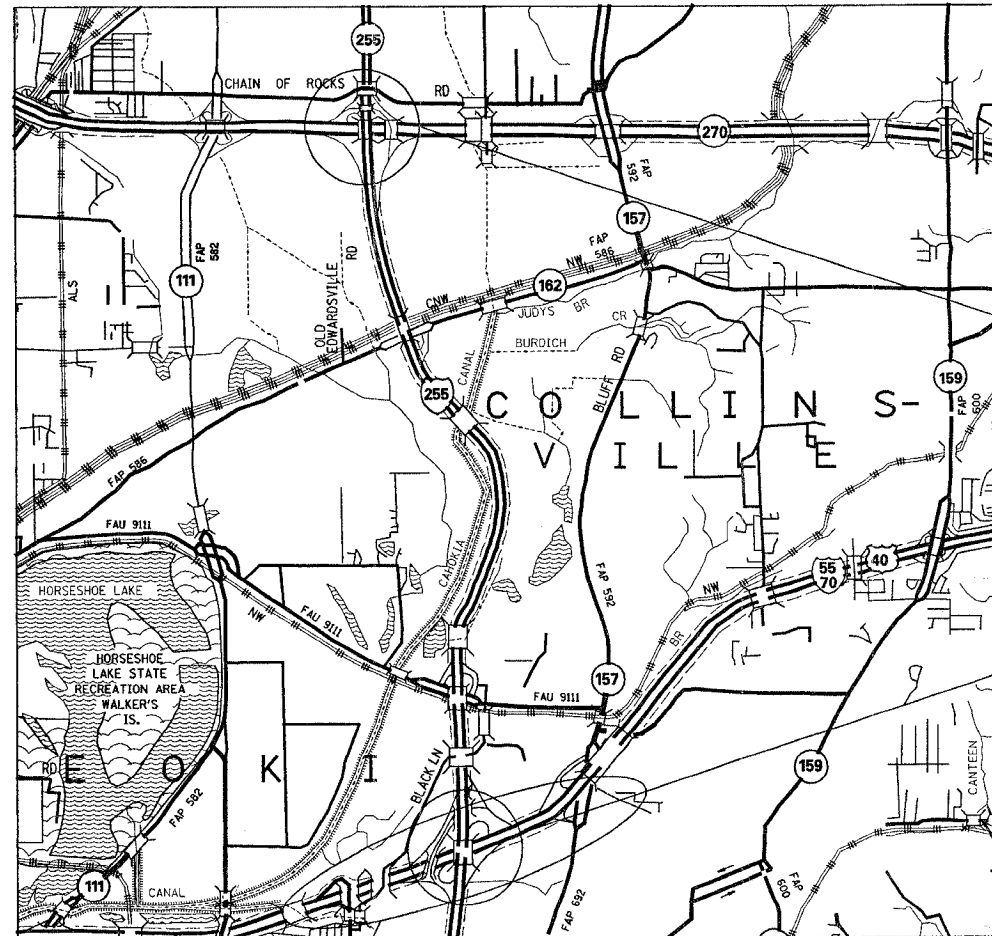
MADISON COUNTY
C-98-093-07

FOR INDEX OF SHEETS, SEE SHEET NO. 2

D-98-089-07



LOCATION OF SECTION INDICATED THUS: - ■ -



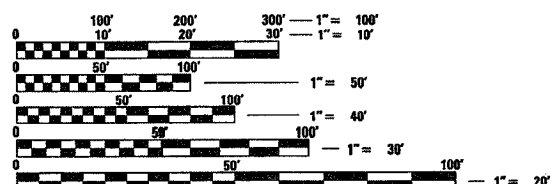
LOCATION #2	BEGINNING STA.	ENDING STA.
RAMP 1	148+04	179+64
RAMP 2	212+58	231+00
RAMP 3	1638+00	1646+00
RAMP 4	340+48	366+35
RAMP 5	462+62	485+46
RAMP 6	580+00	613+93
RAMP 7	693+63	792+00
OMISSION	717+30	720+67
RAMP 8	703+19	722+55
RAMP 9	872+40	885+00

LOCATION #1	BEGINNING STA.	ENDING STA.
RAMP 1	1272+55	1298+00
RAMP 2	101+70	161+40
RAMP 3	470+00	490+00
RAMP 4	200+00	232+26
RAMP 5	800+00	811+82
RAMP 6	301+00	315+54
RAMP 7	152+20	161+75
RAMP 8	400+00	414+16
RAMP 9	500+00	519+40
RAMP 10	600+00	619+42
ROADWAY "A"	699+90	735+77
ROADWAY "B"	800+00	867+04

GROSS LENGTH = 2.53 MI
NET LENGTH = 2.53 MI

PROJECT ENGINEER: PATTI LeBEAU (618) 346-3179
SQUAD LEADER: TIM PADGETT (618) 346-3284

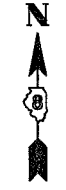
MICROFILMED _____
REEL NUMBER _____
AWARDED _____
RESIDENT ENGINEER _____
AS BUILT CHANGES WERE MADE
ON THE FOLLOWING SHEETS



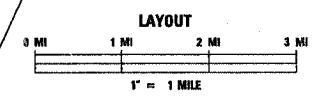
FULL SIZE PLANS HAVE BEEN PREPARED USING STANDARD
ENGINEERING SCALES. REDUCED SIZED PLANS WILL NOT
CONFORM TO STANDARD SCALES. IN MAKING MEASUREMENTS
ON REDUCED PLANS, THE ABOVE SCALES MAY BE USED.

J.U.L.I.E.
JOINT UTILITY LOCATION INFORMATION FOR EXCAVATION
1-800-892-0123

CONTRACT NO. 76B15



DESIGN DESIGNATION



LOCATION 3-OMIT INTERCHANGE

STATE OF ILLINOIS
DEPARTMENT OF TRANSPORTATION
DIVISION OF HIGHWAYS

SUBMITTED April 27, 2007
Mon Chames
DEPUTY DIRECTOR OF HIGHWAYS
REGION FIVE ENGINEER

May 11, 2007
Eric E. Howard
ENGINEER OF DESIGN AND ENVIRONMENT

May 11, 2007
Melton R. Spear, P.E.
DIRECTOR, DIVISION OF HIGHWAYS

PRINTED BY THE AUTHORITY
OF THE STATE OF ILLINOIS

F.A.I. RTE.	SECTION	COUNTY	TOTAL SHEETS	SHEET NO.
•	••	MADISON	37	2
STA. TO STA.				
FED. ROAD DIST. NO. ILLINOIS FED. AID PROJECT				

•-255-55/70
 ••(60-7, 60-9)RS AND 60-16-1,7-1)RS

INDEX OF SHEETS

- 1 COVER SHEET
- 2 INDEX OF SHEETS, GENERAL NOTES, AND STANDARDS
- 3 SUMMARY OF QUANTITIES
- 4 DETAILED LOCATION MAPS
- 5 SCHEDULE OF QUANTITIES-LOCATIONS 1&2
- 6-10 TYPICAL SECTIONS-LOCATIONS 1&2
- 11-18 SCHEDULES-LOCATIONS 1&2
- 19 RAMP CLOSURE DETAIL-LOCATIONS 1&2
- 20 DETOUR SIGNING-LOCATIONS 1&2
- 21-28 DETOUR SHEETS-LOCATIONS 1&2
- 29 DETAILS-LOCATIONS 1&2
- 30 SCHEDULE OF QUANTITIES-LOCATION 3
- 31 TYPICALS-LOCATION 3
- 32-33 SCHEDULES-LOCATION 3
- 34-35 TRAFFIC CONTROL-LOCATION 3
- 36-37 DETAILS-LOCATION 3

GENERAL NOTES

1. THE STANDARDS AND REVISION NUMBERS SHALL APPLY TO THIS PROJECT.
2. THE 155/70 AT 1255 INTERSECTION SHALL BE DENOTED AS LOCATION #1, THE 1270 AT 1255 INTERSECTION SHALL BE DENOTED AS LOCATION #2, AND 1-55/70 SHALL BE DENOTED AS LOCATION 3.
3. IF ANY SECTION OR SUB-SECTION MONUMENTS ARE ENCOUNTERED, THE ENGINEER SHALL BE NOTIFIED BEFORE SUCH MONUMENTS ARE REMOVED OR RESURFACED OVER. THE CONTRACTOR SHALL PROTECT AND CAREFULLY PRESERVE ALL PROPERTY MARKERS AND MONUMENTS UNTIL THE OWNER, AN AUTHORIZED SURVEYOR, OR AGENT HAS WITNESSED OR OTHERWISE REFERENCED THEIR LOCATION.
4. EXCESS BITUMEN REMOVAL SHALL BE PAID FOR ACCORDING TO ARTICLE 109.04 OF THE STANDARD SPECIFICATIONS.
5. MIXTURES FOR JOINTS, CRACKS, AND FLANGWAYS SHALL BE PAID FOR ACCORDING TO ARTICLE 109.04 OF THE STANDARD SPECIFICATIONS.
6. THE MATERIAL TRANSFER DEVICE (MTD) MAY BE ALLOWED TO TRAVEL OVER STRUCTURES IF GIVEN APPROVAL FROM THE ENGINEER. THE MTD IS EMPTIED OF BITUMINOUS MATERIAL PRIOR TO CROSSING THE STRUCTURE, AND THE TIRES OF THE MTD TRAVEL ON OR IN CLOSE PROXIMITY AND PARALLEL TO THE BEAM AND/OR GIRDER LINES OF THE STRUCTURE. THE RESIDENT ENGINEER SHOULD MARK THE DECK SURFACE FOR THE LOCATION OF THE BEAMS AND GIRDERS. THE COST TO EMPTY THE MTD OF BITUMINOUS MATERIAL WILL BE AT THE EXPENSE OF THE CONTRACTOR. IF THE NBIS RATING OF THE STRUCTURE IS LESS THAN OR EQUAL TO 4.0, THE DEPARTMENT WILL PAY TO HAVE THE MTD MOVED IN ACCORDANCE TO ARTICLE 109.04 OF THE STANDARD SPECIFICATIONS.
7. THE THICKNESS OF THE HMA MIXTURE SHOWN ON THE PLANS IS THE NOMINAL THICKNESS. DEVIATIONS FROM THE NOMINAL THICKNESS WILL BE PERMITTED WHEN SUCH DEVIATIONS OCCUR DUE TO IRREGULARITIES IN THE EXISTING SURFACE OR BASE ON WHICH THE BITUMINOUS MIXTURE IS PLACED.
8. ILLINOIS STATE LAW REQUIRES A 48-HOUR NOTICE BE GIVEN TO ALL UTILITIES BEFORE DIGGING. FIELD MARKING OF FACILITIES MAY BE OBTAINED BY CONTACTING J.U.L.I.E. OR FOR NON-MEMBERS, THE UTILITY COMPANY DIRECTLY. AGENCIES KNOWN TO HAVE FACILITIES WITHIN THE PROJECT AREA ARE AS FOLLOWS:
 - AMERENCIPI'S
 - MOUND PUBLIC WATER & SEWER DISTRICT
 - AMEREN IP
 - CENTERPOINT ENERGY
 - CHARTER COMMUNICATIONS, INC.
 - CITY OF COLLINGSVILLE
 - VILLAGE OF GLEN CARBON
 - ILLINOIS AMERICAN WATER COMPANY
 - MCLEOD USA TELECOMMUNICATIONS, INC.
 - MADISON COUNTY SPECIAL SERVICE AREA, #1
 - MITCHELL PUBLIC WATER DISTRICT
 - AT&T ILLINOIS
 - LEVEL 3 COMMUNICATIONS
 - SOUTHWESTERN ELECTRIC COOP
 - CITY OF TROY

MEMBERS OF J.U.L.I.E. (800)-892-0123 ARE INDICATED BY *. NON J.U.L.I.E. MEMBERS MUST BE NOTIFIED INDIVIDUALLY.
9. ALL TEMPORARY PAVEMENT MARKINGS WILL BE PLACED IN SUCH A MANNER SO AS NOT TO INTERFERE WITH THE PLACEMENT OF PERMANENT PAVEMENT MARKINGS.
10. BITUMINOUS CONCRETE USED FOR PAVEMENT PATCHING AND/OR BASE COURSE WIDENING SHALL BE PRODUCED UNDER THE SUPERPAVE SPECIAL PROVISION.
11. HIGH EARLY STRENGTH CONCRETE MIX SHALL BE USED FOR ALL PCC PATCHING.
12. ALL PATCHING ON THIS PROJECT SHALL BE COMPLETED PRIOR TO SURFACE REMOVAL.
13. THE CONTRACTOR AND THE ENGINEER SHALL BE AWARE THAT NO SURVEY WAS PERFORMED FOR THIS PROJECT. THE STATIONING AND TOPO SHOWN IN THE PLANS WAS CREATED USING MICROFILM AND FIELD MEASUREMENTS MADE BY DESIGN AND OPERATIONS PERSONNEL. BOTH SHALL BE CONSIDERED APPROXIMATE.
14. THE CONTRACTOR SHALL BE REQUIRED TO CLEAN POT HOLE AREAS AND PLACE LEVEL BINDER (HAND METHOD) PRIOR TO CONCRETE PATCHING AND ALL HMA RESURFACING OPERATIONS AS DIRECTED BY THE ENGINEER. THIS WORK SHALL BE PAID FOR AS LEVEL BINDER (HAND METHOD) AND NO ADDITIONAL COMPENSATION WILL BE ALLOWED. TRAFFIC CONTROL 701426 OR OTHER APPROVED TRAFFIC CONTROL SHALL BE USED.
15. ADVANCE WARNING SIGNS SHALL BE PLACED ON ALL ROUTES WHERE RAMPS WILL BE CLOSED ACCORDING TO STANDARD 701400 AND AS DIRECTED BY THE RESIDENT ENGINEER TO NOTIFY MOTORISTS OF RAMP AND LANE CLOSURES ON THE VARIOUS RAMPS AT LOCATION #1 AND LOCATION #2.
16. OVER NIGHT LANE CLOSURES WILL NOT BE ALLOWED.
17. ANY REFERENCE TO BITUMINOUS CONCRETE SHALL BE CONSTRUED TO MEAN HMA.
18. ALL LOCATIONS WHERE MAINLINE 155/70 (WB) TIE IN TO THE 1255 RAMPS SHALL BE CONSTRUCTED ACCORDING TO THE SPECIAL DETAIL SHOWN IN THE PLANS.
19. THE PORTABLE CHANGEABLE MESSAGE SIGNS SHALL BE PLACED AS DIRECTED BY THE ENGINEER. NO ADDITIONAL COMPENSATION SHALL BE ALLOWED FOR THE RELOCATION OF THESE SIGNS.
20. EXCEPT WHERE DESIGNATED OTHERWISE, THE LOCATIONS AND/OR DEPTHS OF UNDERGROUND UTILITIES SHOWN HAVE BEEN TAKEN FROM OFFICE RECORD INFORMATION FURNISHED BY THE UTILITY OWNERS AND MUST BE CONSIDERED APPROXIMATE.
21. THE CONTRACTOR SHALL VERIFY ALL DIMENSIONS AND CONDITIONS IN THE FIELD PRIOR TO CONSTRUCTION AND ORDERING OF MATERIALS.
22. ALL MILLINGS TO BE DELIVERED TO THE MITCHELL OPERATIONS YARD. PLEASE CONTACT STEVE WHEELER AT 259-1440 PRIOR TO DELIVERING.
23. DOWEL BARS SHALL BE MEASURED AND PAID FOR AS SPECIFIED IN SECTION 442 OF THE STANDARD SPECIFICATIONS.
24. THE INTENT OF BITUMINOUS SURFACE REMOVAL 2" IS TO REMOVE THE EXISTING OVERLAY PORTION TO ENABLE MAINLINE 1-55/70 WEST BOUND PAVEMENT RESURFACING PORTION TO MATCH EXISTING SHOULDERS AND RAMP. IT IS SUGGESTED THAT THE CONTRACTOR SCHEDULE FULL DEPTH SHOULDER REPAIR FROM STATION 478+50 TO 475+80 PRIOR TO OTHER WORK IN ORDER TO AID IN TRAFFIC CONTROL.
25. IT HAS BEEN ESTIMATED THAT 6120 TONS OF BITUMINOUS MATERIAL WILL BE REMOVED AT LOCATION 3. THIS MATERIAL SHALL BE DELIVERED TO AN AREA DESIGNATED BY THE IODT FIELD TECH.
26. LISTED BELOW ARE ENGLISH STATIONS FOR STRUCTURES ON THE SUBJECT PROJECT. EACH STATION IS LOCATED ON THE CENTERLINE OF THE BRIDGE OR BRIDGES AND THE CENTERLINE OF FAI-70 ENGLISH STATIONS ARE STAMPED IN THE PAVEMENT OF FAI-70.

LOCATION	ENGLISH
CANTEEN CREEK	377+52.70
BLACK LANE	416+30.00
1 - 255	453+84.33
IL RTE. 157	514+14.34
27. TRAFFIC CONTROL COUNTERS EMBEDDED IN THE SURFACE TO BE MILLED ARE AT 4 KNOWN LOCATIONS. SINCE THE EXACT DEPTH IS UNKNOWN, CONTRACTOR IS ADVISED THAT THE ONLY DETECTOR LOOPS TO BE RESTORED ARE CURRENTLY IN USE AT STATION 395+58 NEAR BLACK LANE. ALL OTHER LOOPS ARE TO BE ABANDONED IN PLACE. NO ADDITIONAL COMPENSATION WILL BE ALLOWED EXCEPT FOR THE DETECTOR LOOP REPLACEMENT QUANTITY FOR STATION 395+58.
28. ANY AREAS DISTURBED DUE TO CONSTRUCTION ACTIVITIES SHALL BE SEEDED (TEMPORARY & PERMANENT) AT THE CONTRACTOR'S EXPENSE AND NO OTHER COMPENSATION WILL BE ALLOWED.
29. SHORT TERM PAVEMENT MARKING SHALL BE APPLIED TO THE MILLED, PRIMED, AND FINAL SURFACE. AN AMOUNT OF TEMPORARY PAVEMENT MARKING EQUAL TO TWICE THE AMOUNT OF PERMANENT PAVEMENT MARKING HAS ALSO BEEN ADDED TO THE PLANS.
30. IT SHALL BE THE CONTRACTOR'S RESPONSIBILITY TO INSURE THAT ADJACENT PAVEMENT MARKING IS NOT DAMAGED DURING ANY OPERATIONS.
31. THE MILLING FROM LOCATION 3 SHALL BE DELIVERED TO TROY IODT YARD STORAGE SITE BEHIND FULL GOSPEL FELLOWSHIP CHURCH NEAR THE INTERSECTION OF IL 111 AND HORSESHOE LAKE ROAD. THE CONTRACTOR WILL NOT DRIVE OR TURN AROUND ON CHURCH PARKING LOT. CONTACT STAN RUDY AT (618) 667-0720 FOR MOR INFORMATION.

MIXTURE USE	SMA*	TOP LIFT SHOULDERS	FULL DEPTH PATCH
AC/PC	SBS PG 76-22	PG 58-22	PG 64-22
RAPZ (MAX)		30%	10%
DESIGN AIR VOIDS	4.0% @ Ndes = 80	••2.0% @ Ndes=30	4.0% @ Ndes= 105
MIX COMPOSITION	IL 12.5		
GRADATION MIXTURE			
FRICITION AGG	SMA	BAM	MIXTURE "B"

* AND PARTIAL DEPTH PATCHING

TRAFFIC CONTROL NOTES FOR LOCATION 1 & 2:

1. ALL TRAFFIC CONTROL DEVICES SHALL BE SKID MOUNTED.
2. "ROAD CONSTRUCTION AHEAD" SIGNS SHALL BE PLACED AT THE BEGINNING AND END OF THE PROJECT PLUS THE INTERSECTING SIDE ROADS, AND WILL BE INCLUDED IN THE TRAFFIC CONTROL PAY ITEMS. ALL CONSTRUCTION SIGNS SHALL BE FLUORESCENT ORANGE.
3. THE STAGING AND RAMP CLOSURES DETAILS AS SHOWN IN THE PLANS IS SUGGESTED. THE CONTRACTOR MAY SUBMIT IN WRITING A PROPOSED STAGE/RAMP CLOSURE CONSTRUCTION TRAFFIC CONTROL SEQUENCE MEETING THE TRAFFIC CONTROL STANDARDS, PLAN NOTES AND SPECIAL PROVISIONS IN THIS CONTRACT FOR APPROVAL BY THE DEPARTMENT.
4. FLAGMEN SHALL BE PRESENT DURING ALL CLOSURE HOURS, INCLUDING LUNCH HOUR, AND NO ADDITIONAL COMPENSATION SHALL BE APPLIED.
5. THE CONTRACTOR SHALL, AT THE ENGINEERS' DISCRETION, RELOCATE THE CHANGEABLE MESSAGE SIGN AT THE VARIOUS RAMPS AS NEEDED, AMONG THE TWO LOCATIONS.

STANDARDS

000001-04	701301-02	781001-02
406001-04	701311-02	814001-01
406101-03	701400-02	886001
442001-03	701401-03	
442101-06	701406-04	
442201-02	701411-03	
482001-01	701426-02	
635001	701446	
701011-01	702001-06	
701101-01	720001	
701106-01	780001-01	

REVISIONS		ILLINOIS DEPARTMENT OF TRANSPORTATION INDEX OF SHEETS GENERAL NOTES FAI 255, FAI 55/70 SECTION (60-7, 60-9)RS & 60-16-1,7-1)RS MADISON COUNTY	SCALE: VERT. HORIZ.	DRAWN BY CHECKED BY
NAME	DATE			

PLOT DATE: 8/11/2007
 FILE NAME: c:\work\p15\76b15\76b15.dgn
 PLOT SCALE: 1/8" = 1'-0"
 REFERENCE: 1. SHEET

SUMMARY OF QUANTITIES

*-255-55/70	F.A.I. RTE.	SECTION	COUNTY	TOTAL SHEETS	SHEET NO.
**60-7, 60-9)RS AND 60-16-1,7-1)RS	*	**	MADISON	37	3
STA.		TO STA.			
FED. ROAD DIST. NO.		ILLINOIS FED. AID PROJECT			

SUMMARY OF QUANTITIES			URBAN TOTAL QUANTITIES	CONSTRUCTION TYPE CODE		
CODE NO	ITEM	UNIT		1000 LOCATION #1	1000 LOCATION #2	1000 LOCATION #3
40600200	BITUMINOUS MATERIALS (PRIME COAT)	TON	6.2	6	0.2	
40600215	POLYMERIZED BITUMINOUS MATERIALS (PRIME COAT)	TON	74.5	19.2	34.3	21
40600300	AGGREGATE (PRIME COAT)	TON	1371	122	335	914
40600895	CONSTRUCTING TEST STRIP	EACH	2			2
40600982	HOT-MIX ASPHALT SURFACE REMOVAL - BUTT JOINT	SQ YD	207		24	183
40600985	PORTLAND CEMENT CONCRETE SURFACE REMOVAL - BUTT JOINT	SQ YD	725	128	384	213
40600990	TEMPORARY RAMP	SQ YD	643	128	360	155
44000151	HOT-MIX ASPHALT SURFACE REMOVAL, 1/2"	SQ YD	62617	16378	46239	
44000157	HOT-MIX ASPHALT SURFACE REMOVAL, 2"	SQ YD	59695	2817		56878
44004250	PAVED SHOULDER REMOVAL	SQ YD	491			491
44200120	PAVEMENT PATCHING, TYPE II, 10 INCH	SQ YD	131			131
44200565	CLASS A PATCHES, TYPE II, 11 INCH	SQ YD	60		60	
44200569	CLASS A PATCHES, TYPE III, 11 INCH	SQ YD	61		61	
44200571	CLASS A PATCHES, TYPE IV, 11 INCH	SQ YD	658		658	
44200620	CLASS A PATCHES, TYPE II, 14 INCH	SQ YD	29		29	
44200624	CLASS A PATCHES, TYPE III, 14 INCH	SQ YD	54		54	
44200628	CLASS A PATCHES, TYPE IV, 14 INCH	SQ YD	225		225	
44200966	CLASS B PATCHES, TYPE I, 10 INCH	SQ YD	34.7	34.7		
44200970	CLASS B PATCHES, TYPE II, 10 INCH	SQ YD	562	562		
44200974	CLASS B PATCHES, TYPE III, 10 INCH	SQ YD	74	74		
44200976	CLASS B PATCHES, TYPE IV, 10 INCH	SQ YD	143	143		
44213000	PATCHING REINFORCEMENT	SQ YD	1066		1066	
44213100	PAVEMENT FABRIC	SQ YD	216	216		
44213200	SAW CUTS	FOOT	6978	3150	3322	506
44300200	STRIP REFLECTIVE CRACK CONTROL TREATMENT	FOOT	3774	3774		
45100100	CRACK ROUTING (PAVEMENT)	FOOT	193580	95912	97668	
45100200	CRACK FILLING	POUND	71412	31471	39941	
48101200	AGGREGATE SHOULDERS, TYPE B	TON	1092	538	554	
48203005	HOT-MIX ASPHALT SHOULDERS, 2"	SQ YD	2817	2817		
48203012	HOT-MIX ASPHALT SHOULDERS, 3 3/4"	SQ YD	59168	16378	42790	
48203100	HOT-MIX ASPHALT SHOULDERS	TON	181			181
60100080	FRENCH DRAINS	CU YD	20		20	
67000400	ENGINEER'S FIELD OFFICE, TYPE A	CAL MO	12	3	3	6
67100100	MOBILIZATION	L SUM	1	0.3	0.3	0.4

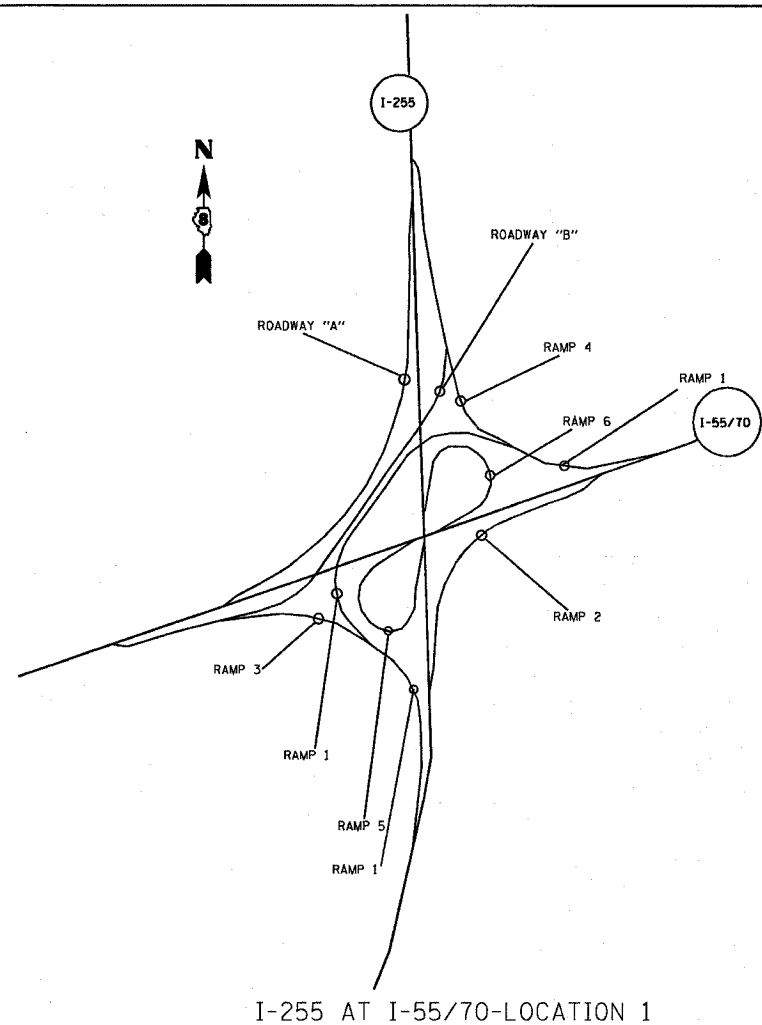
SUMMARY OF QUANTITIES			URBAN TOTAL QUANTITIES	CONSTRUCTION TYPE CODE		
CODE NO	ITEM	UNIT		1000 LOCATION #1	1000 LOCATION #2	1000 LOCATION #3
70100420	TRAFFIC CONTROL AND PROTECTION, STANDARD 701411	EACH	21	8	8	5
70100700	TRAFFIC CONTROL AND PROTECTION, STANDARD 701406	L SUM	1	0.3	0.3	0.4
70100815	TRAFFIC CONTROL AND PROTECTION, STANDARD 701446	L SUM	1	0.3	0.3	0.4
70101805	TRAFFIC CONTROL AND PROTECTION (SPECIAL)	EACH	5			5
70106800	CHANGEABLE MESSAGE SIGN	CAL MO	26	1	1	24
70300100	SHORT-TERM PAVEMENT MARKING	FOOT	14547	5904	4324	4319
70300220	TEMPORARY PAVEMENT MARKING - LINE 4"	FOOT	140988	37287	61264	42437
70301000	WORK ZONE PAVEMENT MARKING REMOVAL	SQ FT	2706	1266		1440
* 78000200	THERMOPLASTIC PAVEMENT MARKING - LINE 4"	FOOT	32077			32077
* 78000500	THERMOPLASTIC PAVEMENT MARKING - LINE 8"	FOOT	2770			2770
* 78001110	PAINT PAVEMENT MARKING - LINE 4"	FOOT	94910	35987	58923	
* 78001140	PAINT PAVEMENT MARKING - LINE 8"	FOOT	3641	1300	2341	
78004210	PREFORMED PLASTIC PAVEMENT MARKING, TYPE B - INLAID - LINE 4"	FOOT	7590			7590
* 78100100	RAISED REFLECTIVE PAVEMENT MARKER	EACH	2530	492	1266	772
78300200	RAISED REFLECTIVE PAVEMENT MARKER REMOVAL	EACH	2530	492	1266	772
* 88600600	DETECTOR LOOP REPLACEMENT	FOOT	168			168
X0322729	MATERIAL TRANSFER DEVICE	TON	7983	369	1254	6360
X0324952	DETOUR SIGNING	L SUM	1	0.5	0.5	
X4066580	POLYMERIZED HOT-MIX ASPHALT SURFACE COURSE, STONE MATRIX ASPHALT, N80	TON	7010	148	502	6360
X4066685	POLYMERIZED HOT-MIX ASPHALT BINDER COURSE, STONE MATRIX ASPHALT, N80	TON	973	221	752	
X440A100	PORTLAND CEMENT CONCRETE SURFACE REMOVAL (COLD MILLING) 2"	SQ YD	4507	4507		
X440A200	PORTLAND CEMENT CONCRETE SURFACE REMOVAL (COLD MILLING)	SQ YD	76328	8635	67693	
X4421000	PARTIAL DEPTH PATCHING	TON	1214	194	80	940
X4422025	PARTIAL DEPTH REMOVAL 2"	SQ YD	10827	1728	711	8388
Z0017202	DOWEL BARS 1 1/2"	EACH	1528	1528		
Z0075310	TIE BARS 3/4"	EACH	193		193	

PLOT DATE: 8/11/2007
 FILE NAME: C:\p07001\1483377\cadd\pl\1483377.dgn
 PLOT SCALE: 1/8"=1'-0"
 REFERENCE: SHEETS

*SPECIALTY ITEMS

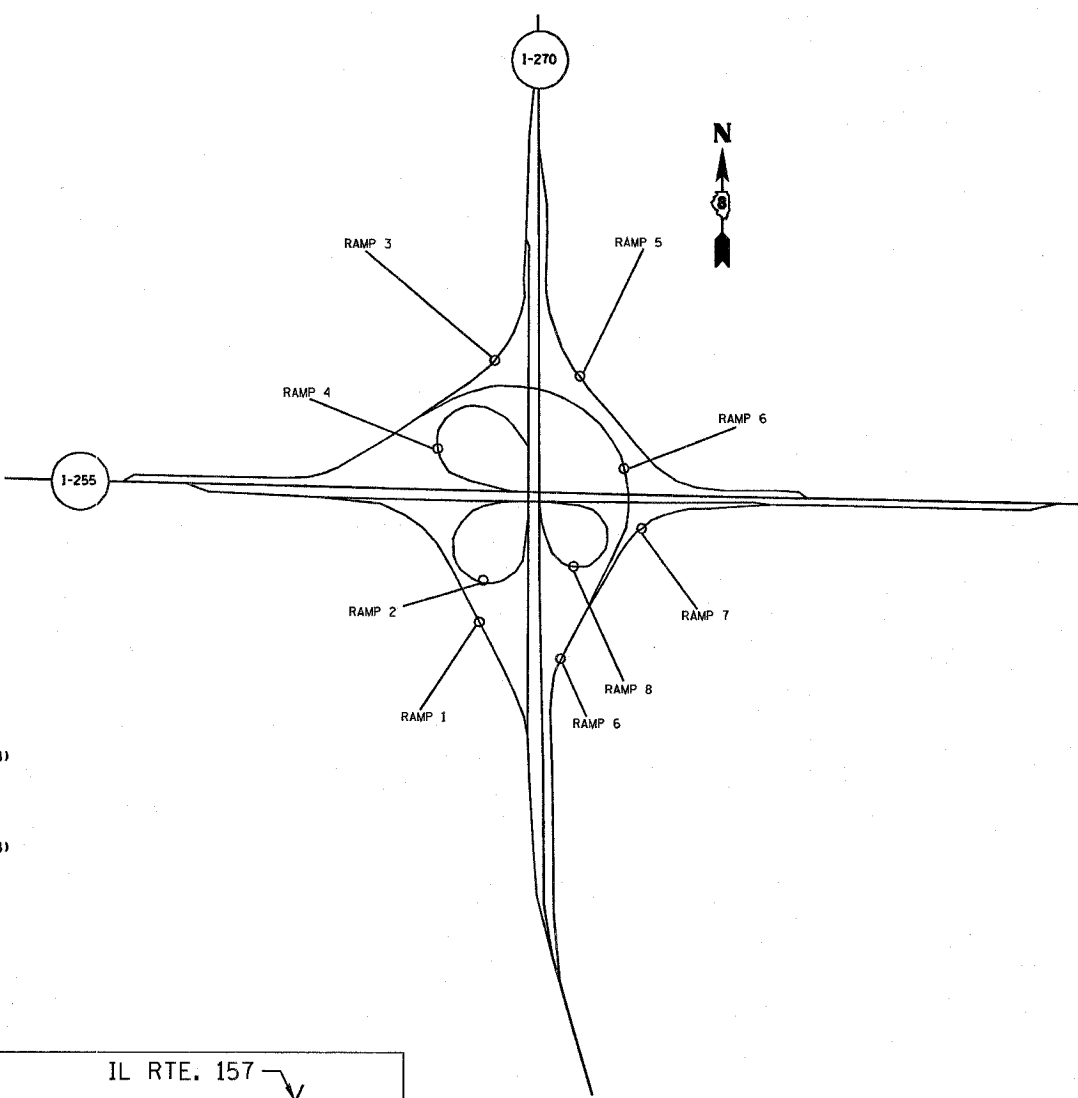
F.A.I. RTE.	SECTION	COUNTY	TOTAL SHEETS	SHEET NO.
*	**	MADISON	37	4
STA.		TO STA.		
FED. ROAD DIST. NO.		ILLINOIS FED. AID PROJECT		

**255-55/70
**60-7, 60-9IRS AND 60-16-1,7-1RS



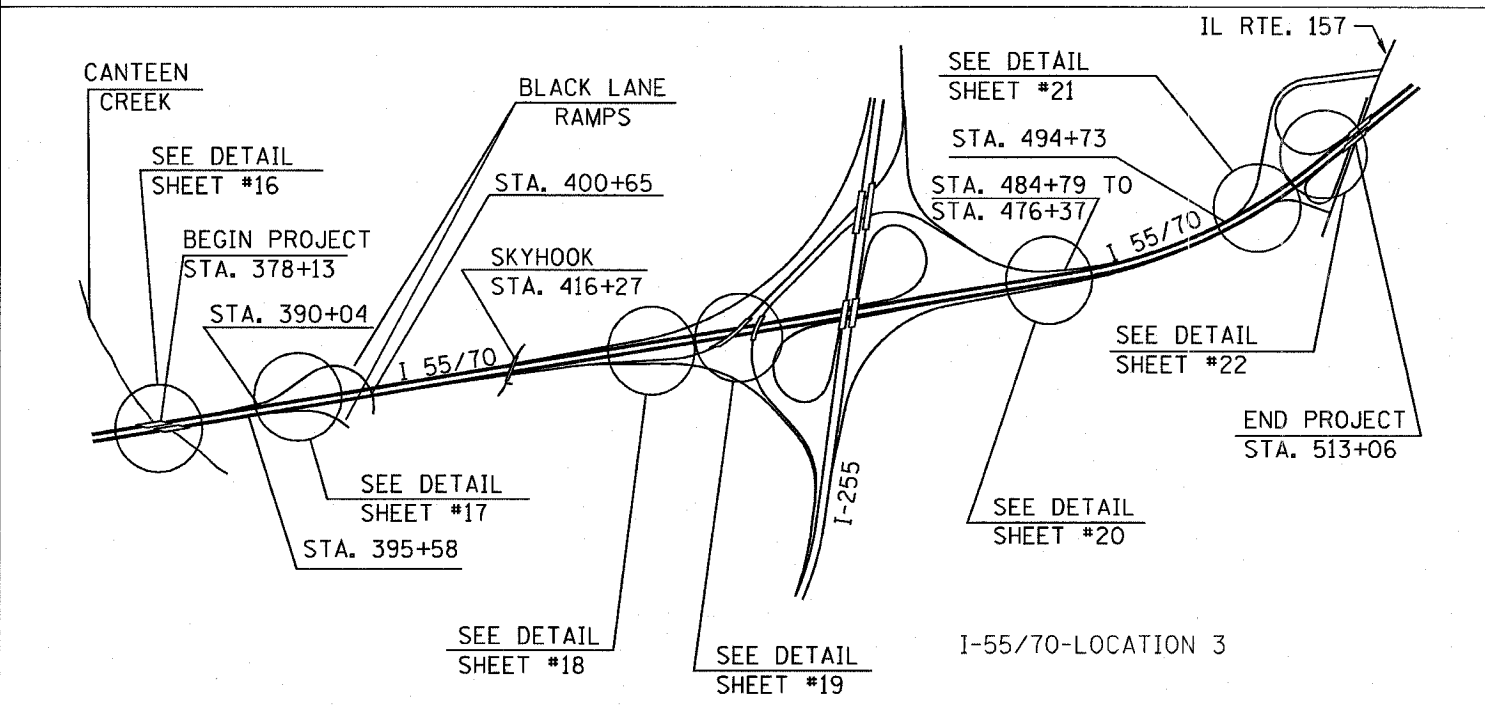
- LOCATION #1**
I255 @ 155/70 INTERCHANGE
- RAMP 1: 155/70 (WB) TO 1255 (SB)
MILL 1/2 in
PAVE 3 3/4 in ASPHALT
2 1/4 in BINDER
1 1/2 in SURFACE
REPAIR AGGREGATE SHOULDER
PATCHING
FULL-DEPTH
PARTIAL
CRACK SEALING
 - RAMP 2: 1255 (NB) TO 155/70 (EB)
MILL 1/2 in
PAVE 3 3/4 in ASPHALT
2 1/4 in BINDER
1 1/2 in SURFACE
REPAIR AGGREGATE SHOULDER
PATCHING
FULL-DEPTH
PARTIAL
 - RAMP 3: 155/70 (EB) TO 1255 (SB)
PATCHING
FULL-DEPTH
PARTIAL
REPAIR AGGREGATE SHOULDER
CRACK SEALING
 - RAMP 4: 155/70 (WB) TO 1255 (NB)
REPAIR AGGREGATE SHOULDER
PATCHING
FULL-DEPTH
PARTIAL
CRACK SEALING
 - RAMP 5: 1255 (SB) TO 155/70 (EB)
PATCHING
FULL-DEPTH
PARTIAL
REPAIR AGGREGATE SHOULDER
CRACK SEALING
 - RAMP 6: 1255 (NB) TO 155/70 (WB)
PATCHING
FULL-DEPTH
PARTIAL
REPAIR AGGREGATE SHOULDER
CRACK SEALING
 - ROADWAY A 1255 (SB) TO 155/70 (WB)
REPAIR AGGREGATE SHOULDER
PATCHING
FULL-DEPTH
PARTIAL
CRACK SEALING
 - ROADWAY B 155/70 (EB) TO 1255 (NB)
REPAIR AGGREGATE SHOULDER
PATCHING
FULL-DEPTH
PARTIAL
CRACK SEALING

I-255 AT I-55/70-LOCATION 1



- LOCATION #2**
I255 @ I270 INTERCHANGE
I255 (NB & SB) - MAINLINE
MILL 1/2 in
PAVE 3 3/4 in ASPHALT
2 1/4 in BINDER
1 1/2 in SURFACE
REPAIR AGGREGATE SHOULDER
PATCHING
FULL-DEPTH
PARTIAL
CRACK SEALING
- RAMP 1: 1270 (EB) TO 1255 (SB)
REPAIR AGGREGATE SHOULDER
PATCHING
FULL-DEPTH
PARTIAL
 - RAMP 2: 1255 (SB) TO 1270 (EB)
REPAIR AGGREGATE SHOULDER
PATCHING
FULL-DEPTH
PARTIAL
 - RAMP 3: 1255 (SB) TO 1270 (NB)
MILL 1/2 in
PAVE 3 3/4 in ASPHALT
2 1/4 in BINDER
1 1/2 in SURFACE
REPAIR AGGREGATE SHOULDER
PATCHING
FULL-DEPTH
PARTIAL
CRACK SEALING
 - RAMP 4: 1270 (WB) TO 1255 (SB)
PATCHING
FULL-DEPTH
PARTIAL
CRACK SEALING
 - RAMP 5: 1270 (WB) TO 1255 (NB)
PATCHING
FULL-DEPTH
PARTIAL
CRACK SEALING
 - RAMP 6: 1255 (NB) TO 1270 (WB)
MILL 1/2 in
PAVE 3 3/4 in ASPHALT
2 1/4 in BINDER
1 1/2 in SURFACE
REPAIR AGGREGATE SHOULDER
PATCHING
FULL-DEPTH
PARTIAL
CRACK SEALING
 - RAMP 7: 1255 (NB) TO 1270 (EB)
PATCHING
FULL-DEPTH
PARTIAL
CRACK SEALING
 - RAMP 8: 1270 (EB) TO 1255 (NB)
PATCHING
FULL-DEPTH
PARTIAL
CRACK SEALING

I-255 AT I-270-LOCATION 2



I-55/70-LOCATION 3

PLOT DATE = 5/11/2007
 FILE NAME = c:\projects\76b15\loc3\loc3.dwg
 PLOT SCALE = 1/8"=1'-0"
 REFERENCE = MPP

REVISIONS		DATE
NAME		

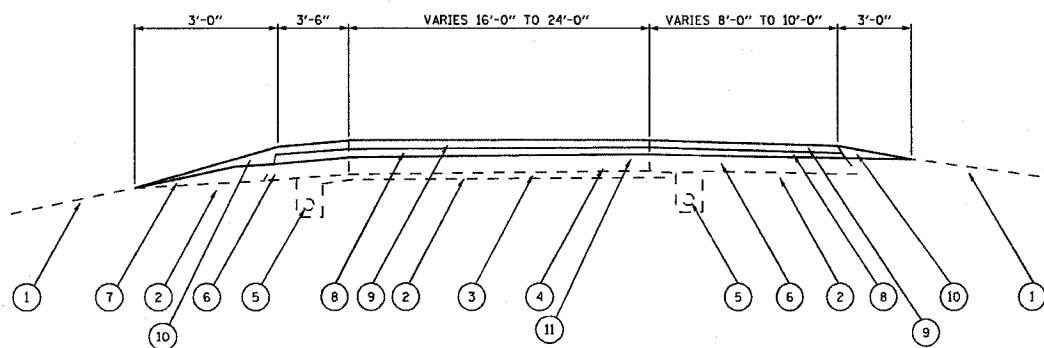
ILLINOIS DEPARTMENT OF TRANSPORTATION
DETAILED LOCATION MAPS
 FAI 255, FAI 55/70
 SECTION 160-7, 60-9IRS &
 60-16-1,7-1RS
 MADISON COUNTY
 SCALE: VERT. DRAWN BY
 HORIZ. CHECKED BY
 DATE

SCHEDULE OF QUANTITIES - LOCATIONS #1 AND #2

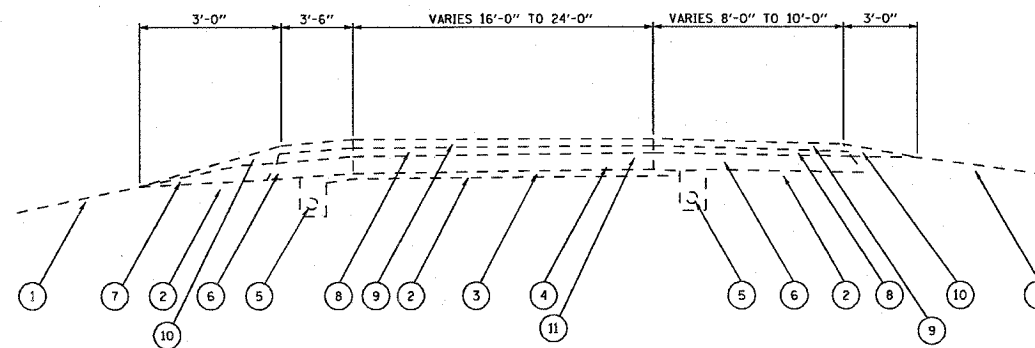
CODE NO	ITEM	UNIT	TOTAL QUANTITIES	CONSTRUCTION TYPE CODE	
				1000 LOCATION #1	1000 LOCATION #2
	BITUMINOUS MATERIALS (PRIME COAT)	TON	6.2	6	0.2
	POLYMERIZED BITUMINOUS MATERIALS (PRIME COAT)	TON	53.5	19.2	34.3
	AGGREGATE (PRIME COAT)	TON	457	122	335
	HOT-MIX ASPHALT SURFACE REMOVAL - BUTT JOINT	SO YD	24		24
	PORTLAND CEMENT CONCRETE SURFACE REMOVAL - BUTT JOINT	SO YD	512	128	384
	TEMPORARY RAMP	SO YD	488	128	360
	HOT-MIX ASPHALT SURFACE REMOVAL, 1/2"	SO YD	62617	16378	46239
	HOT-MIX ASPHALT SURFACE REMOVAL, 2"	SO YD	2817	2817	
	CLASS A PATCHES, TYPE II, 11 INCH	SO YD	60		60
	CLASS A PATCHES, TYPE III, 11 INCH	SO YD	61		61
	CLASS A PATCHES, TYPE IV, 11 INCH	SO YD	658		658
	CLASS A PATCHES, TYPE II, 14 INCH	SO YD	29		29
	CLASS A PATCHES, TYPE III, 14 INCH	SO YD	54		54
	CLASS A PATCHES, TYPE IV, 14 INCH	SO YD	225		225
	CLASS B PATCHES, TYPE I, 10 INCH	SO YD	34.7	34.7	
	CLASS B PATCHES, TYPE II, 10 INCH	SO YD	562	562	
	CLASS B PATCHES, TYPE III, 10 INCH	SO YD	74	74	
	CLASS B PATCHES, TYPE IV, 10 INCH	SO YD	143	143	
	PATCHING REINFORCEMENT	SO YD	1066		1066
	PAVEMENT FABRIC	SO YD	216	216	
	SAW CUTS	FOOT	6472	3150	3322
	STRIP REFLECTIVE CRACK CONTROL TREATMENT	FOOT	3774	3774	
	CRACK ROUTING (PAVEMENT)	FOOT	193580	95912	97668
	CRACK FILLING	POUND	71412	31471	39941
	AGGREGATE SHOULDERS, TYPE B	TON	1092	538	554
	HOT-MIX ASPHALT SHOULDERS, 2"	SO YD	2817	2817	
	HOT-MIX ASPHALT SHOULDERS, 3 3/4"	SO YD	59168	16378	42790
	FRENCH DRAINS	CU YD	20		20
	ENGINEER'S FIELD OFFICE, TYPE A	CAL MO	6	3	3
	MOBILIZATION	L SUM	0.6	0.3	0.3
	TRAFFIC CONTROL AND PROTECTION, STANDARD 701411	EACH	16	8	8
	TRAFFIC CONTROL AND PROTECTION, STANDARD 701406	L SUM	0.6	0.3	0.3

CODE NO	ITEM	UNIT	TOTAL QUANTITIES	CONSTRUCTION TYPE CODE	
				1000 LOCATION #1	1000 LOCATION #2
	TRAFFIC CONTROL AND PROTECTION, STANDARD 701446	L SUM	0.6	0.3	0.3
	CHANGEABLE MESSAGE SIGN	CAL MO	2	1	1
	SHORT-TERM PAVEMENT MARKING	FOOT	10288	5904	4324
	TEMPORARY PAVEMENT MARKING - LINE 4"	FOOT	98551	37287	61264
	WORK ZONE PAVEMENT MARKING REMOVAL	SO FT	1266	1266	
	PAINT PAVEMENT MARKING - LINE 4"	FOOT	94910	35987	58923
	PAINT PAVEMENT MARKING - LINE 8"	FOOT	3641	1300	2341
	RAISED REFLECTIVE PAVEMENT MARKER	EACH	1758	492	1266
	RAISED REFLECTIVE PAVEMENT MARKER REMOVAL	EACH	1758	492	1266
	MATERIAL TRANSFER DEVICE	TON	1623	369	1254
	DETOUR SIGNING	L SUM	1	0.5	0.5
	POLYMERIZED HOT-MIX ASPHALT SURFACE COURSE, STONE MATRIX ASPHALT, N80	TON	650	148	502
	POLYMERIZED HOT-MIX ASPHALT BINDER COURSE, STONE MATRIX ASPHALT, N80	TON	973	221	752
	PORTLAND CEMENT CONCRETE SURFACE REMOVAL (COLD MILLING) 2"	SO YD	4507	4507	
	PORTLAND CEMENT CONCRETE SURFACE REMOVAL (COLD MILLING)	SO YD	76328	8635	67693
	PARTIAL DEPTH PATCHING	TON	274	194	80
	PARTIAL DEPTH REMOVAL 2"	SO YD	2439	1728	711
	DOWEL BARS 1 1/2"	EACH	1528	1528	
	TIE BARS 3/4"	EACH	193		193

F.A.I. RTE.	SECTION	COUNTY	TOTAL SHEETS	SHEET NO.
•	••	MADISON	37	6
STA.		TO STA.		
FED. ROAD DIST. NO.	ILLINOIS	FED. AID PROJECT		
•-255-55/70				
••(60-7, 60-9)RS AND 60-16-1,7-1)RS				



- ① EXISTING EMBANKMENT
- ② EXISTING SUB-GRADE
- ③ EXISTING STABILIZED SUB-BASE 4"
- ④ EXISTING PCC PAVEMENT 10"
- ⑤ EXISTING PIPE UNDERDRAINS
- ⑥ EXISTING HOT-MIX ASPHALT SHOULDERS 10"
- ⑦ EXISTING HOT-MIX ASPHALT SHOULDERS, TYPE B
- ⑧ PROPOSED POLY BCBC SUP IL 19.0 N70 - 2/4"
- ⑨ PROPOSED POLY BCSC SUPER "E" N70 - 1/2"
- ⑩ PROPOSED AGGREGATE SHOULDERS, TYPE B
- ⑪ PROPOSED POLY BIT MATERIALS - PRIME COAT



- ① EXISTING EMBANKMENT
- ② EXISTING SUB-GRADE
- ③ EXISTING STABILIZED SUB-BASE 4"
- ④ EXISTING PCC PAVEMENT 10"
- ⑤ EXISTING PIPE UNDERDRAINS
- ⑥ EXISTING HOT-MIX ASPHALT SHOULDERS 10"
- ⑦ EXISTING HOT-MIX ASPHALT SHOULDERS, TYPE B
- ⑧ PROPOSED POLY BCBC SUP IL 19.0 N70 - 2/4"
- ⑨ PROPOSED POLY BCSC SUPER "E" N70 - 1/2"
- ⑩ PROPOSED AGGREGATE SHOULDERS, TYPE B
- ⑪ PROPOSED POLY BIT MATERIALS - PRIME COAT

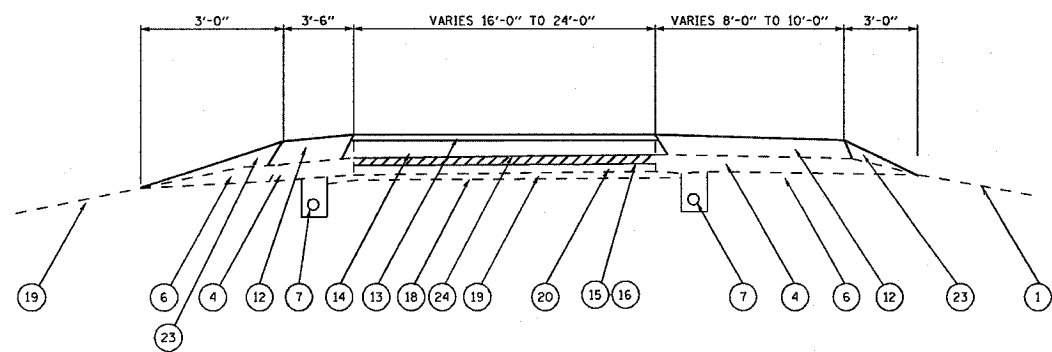
PLOT DATE = 8/11/2007
 FILE NAME = c:\projects\76b15\76b15.dwg
 REFERENCE = REF

REVISIONS	
NAME	DATE

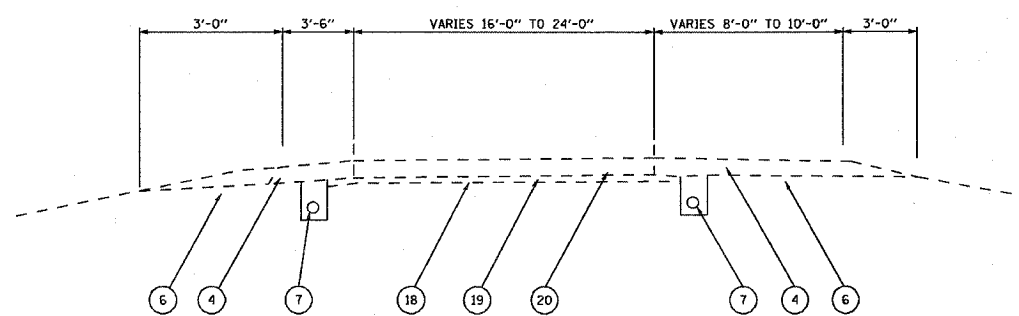
ILLINOIS DEPARTMENT OF TRANSPORTATION
TYPICAL SECTIONS
 FAI 255, FAI 55/70
 SECTION (60-7, 60-9)RS &
 60-16-1,7-1)RS
 MADISON COUNTY
 SCALE: VERT. DRAWN BY
 HORIZ. CHECKED BY
 DATE

F.A.I. RTE.	SECTION	COUNTY	TOTAL SHEETS	SHEET NO.
•	••	MADISON	37	7

STA.	TO STA.
FED. ROAD DIST. NO.	ILLINOIS FED. AID PROJECT
•-255-55/70	••(60-7, 60-9)RS AND 60-16-1,7-1)RS



LOCATION #1
TYPICAL SECTION - RAMPS 1 & 2
STA. 101+70 TO STA. 161+40 (RAMP 1)
STA. 200+00 TO STA. 232+26 (RAMP 2)



LOCATION #1
TYPICAL SECTION - RAMPS 3,4,5,6, ROADWAY "A" & ROADWAY "B"
STA. 301+00 TO STA. 315+54 (RAMP 3)
STA. 400+00 TO STA. 414+16 (RAMP 4)
STA. 500+00 TO STA. 519+40 (RAMP 5)
STA. 600+40 TO STA. 619+420 (RAMP 6)
STA. 699+90 TO STA. 738+77 (ROADWAY "A")
STA. 800+00 TO STA. 807+04 (ROADWAY "B")

LEGEND

- ① EXISTING CRPCC PAVEMENT - 10"
- ② EXISTING STABILIZED SUB-BASE - 4"
- ③ EXISTING HOT- MIX ASPHALT SHOULDERS - 9"
- ④ EXISTING HOT- MIX ASPHALT SHOULDERS - 10"
- ⑤ EXISTING HOT- MIX ASPHALT SHOULDERS - 11"
- ⑥ EXISTING AGGREGATE SHOULDERS, TYPE B
- ⑦ EXISTING PIPE UNDERDRAINS
- ⑧ EXISTING BITUMINOUS CURB
- ⑨ EXISTING JRPCC PAVEMENT - 11"
- ⑩ EXISTING TYPE A GUTTER
- ⑪ EXISTING HOT- MIX ASPHALT CONCRETE - 3"
- ⑫ PROPOSED HOT- MIX ASPHALT SHOULDERS - 3 3/4"
- ⑬ PROPOSED POLYMERIZED BCSC SUPER "E" N70 - 1 1/2"
- ⑭ PROPOSED POLYMERIZED BCBC SUPER IL19.0 N70 - 2 1/4"
- ⑮ PROPOSED POLYMERIZED BITUMINOUS MATERIALS - PRIME COAT
- ⑯ PROPOSED AGGREGATE PRIME COAT
- ⑰ EMBANKMENT
- ⑱ SUB-GRADE
- ⑲ STABILIZED SUB-BASE 4"
- ⑳ PCC PAVEMENT 10"
- ㉑ HOT- MIX ASPHALT SHOULDERS 10"
- ㉒ AGGREGATE SHOULDERS TYPE B
- ㉓ PROPOSED AGGREGATE SHOULDERS TYPE B
- ㉔ PCC SURFACE REM (CM) - 1/2"
- ㉕ PCC SURFACE REM (CM) - 2"
- ㉖ HOT MIX ASPHALT SURFACE REMOVAL - 2"
- ㉗ PROPOSED HOT-MIX ASPHALT SHOULDERS - 2"
- ㉘ HOT-MIX ASPHALT SURFACE REMOVAL - 1/2"

LOCATION #1

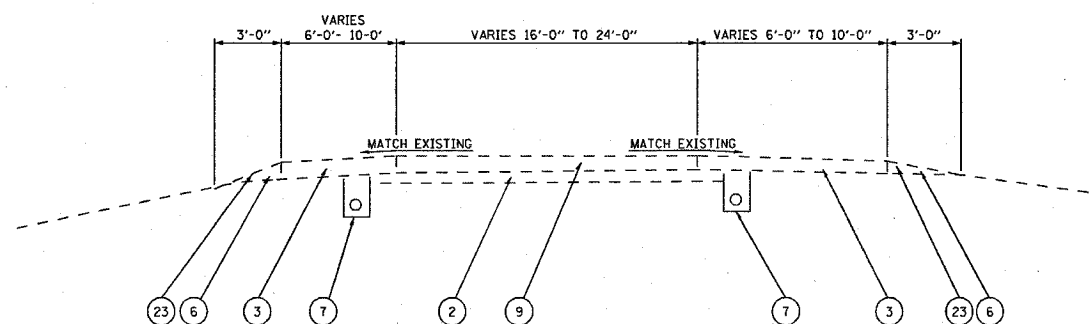
ILLINOIS DEPARTMENT OF TRANSPORTATION
TYPICAL SECTIONS

FAI 255, FAI 55/70
SECTION (60-7, 60-9)RS &
60-(6-1,7-1)RS
MADISON COUNTY

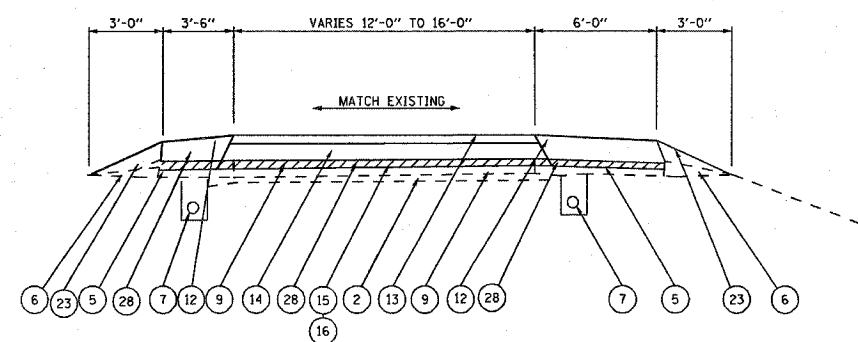
SCALE: VERT. HORIZ.
DATE DRAWN BY CHECKED BY

REVISIONS	
NAME	DATE

F.A.I. RTE.	SECTION	COUNTY	TOTAL SHEETS	SHEET NO.
*	**	MADISON	37	8
STA.		TO STA.		
FED. ROAD DIST. NO.		ILLINOIS FED. AID PROJECT		
*-255-55/70				
**-(60-7, 60-9)RS AND 60-(6-1,7-1)RS				



LOCATION #2
TYPICAL SECTION - RAMPS 1 & 7
STA. 148+04 TO STA. 179+64 (RAMP 1)
STA. 703+19 TO 722+55 (RAMP 7)



LOCATION #2
TYPICAL SECTION - RAMP 3
STA. 340+48 TO STA. 366+35

LEGEND

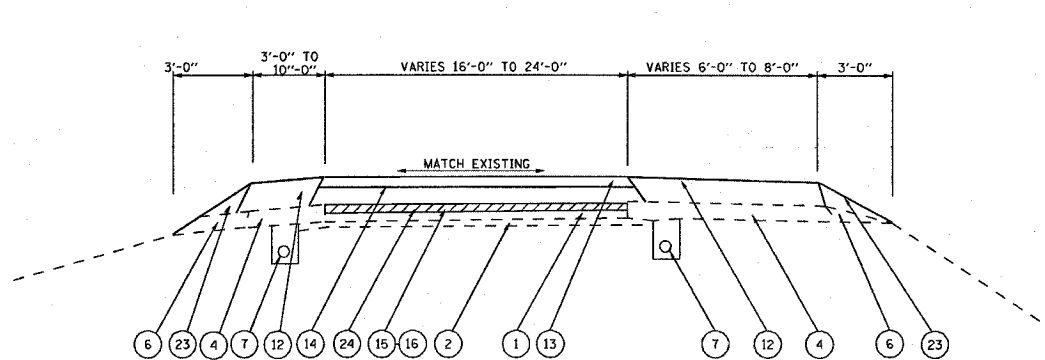
- ① EXISTING CRPCC PAVEMENT - 10"
- ② EXISTING STABILIZED SUB-BASE - 4"
- ③ EXISTING HOT- MIX ASPHALT SHOULDERS - 9"
- ④ EXISTING HOT- MIX ASPHALT SHOULDERS - 10"
- ⑤ EXISTING HOT- MIX ASPHALT SHOULDERS - 11"
- ⑥ EXISTING AGGREGATE SHOULDERS, TYPE B
- ⑦ EXISTING PIPE UNDERDRAINS
- ⑧ EXISTING BITUMINOUS CURB
- ⑨ EXISTING JR PCC PAVEMENT - 11"
- ⑩ EXISTING TYPE A GUTTER
- ⑪ EXISTING HOT- MIX ASPHALT CONCRETE - 3"
- ⑫ PROPOSED HOT- MIX ASPHALT SHOULDERS - 3 3/4"
- ⑬ PROPOSED POLYMERIZED BCBC SUPER "E" N70 - 1 1/2"
- ⑭ PROPOSED POLYMERIZED BCBC SUPER IL19.0 N70 - 2 1/4"
- ⑮ PROPOSED POLYMERIZED BITUMINOUS MATERIALS - PRIME COAT
- ⑯ PROPOSED AGGREGATE PRIME COAT
- ⑰ EMBANKMENT
- ⑱ SUB-GRADE
- ⑲ STABILIZED SUB-BASE 4"
- ⑳ PCC PAVEMENT 10"
- ㉑ HOT- MIX ASPHALT SHOULDERS 10"
- ㉒ AGGREGATE SHOULDERS TYPE B
- ㉓ PROPOSED AGGREGATE SHOULDERS TYPE B
- ㉔ PCC SURFACE REM (CM) - 1/2"
- ㉕ PCC SURFACE REM (CM) - 2"
- ㉖ HOT MIX ASPHALT SURFACE REMOVAL - 2"
- ㉗ PROPOSED HOT-MIX ASPHALT SHOULDERS - 2"
- ㉘ HOT-MIX ASPHALT SURFACE REMOVAL - 1/2"

PLOT DATE • 6/11/2007
 PLOT SCALE • 1" = 10'-0"
 REFERENCE • SHEETS

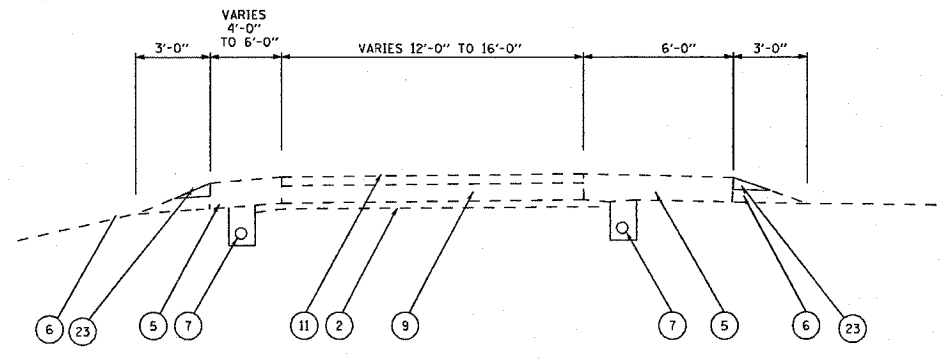
REVISIONS	
NAME	DATE

LOCATION #2
ILLINOIS DEPARTMENT OF TRANSPORTATION
TYPICAL SECTIONS
LOCATION #2
FAI 255, FAI 55/70
SECTION (60-7, 60-9)RS &
60-(6-1,7-1)RS
MADISON COUNTY
SCALE: VERT. DRAWN BY
 HORIZ. CHECKED BY
DATE

F.A.I. RTE.	SECTION	COUNTY	TOTAL SHEETS	SHEET NO.
*	**	MADISON	37	9
STA. TO STA.		FED. ROAD DIST. NO. ILLINOIS FED. AID PROJECT		
		*--255-55/70 **-(60-7, 60-9)RS AND 60-16-1,7-1)RS		



LOCATION #2
TYPICAL SECTION - RAMP 6
STA. 693+63 TO STA. 792+00



LOCATION #2
TYPICAL SECTION - RAMPS 2, 4, 5, & 8
STA. 212+58 TO STA. 231+00 (RAMP 2)
STA. 462+62 TO STA. 485+46 (RAMP 4)
STA. 580+00 TO STA. 613+93 (RAMP 5)
STA. 872+40 TO STA. 885+00 (RAMP 8)

LEGEND

- ① EXISTING CRPCC PAVEMENT - 10"
- ② EXISTING STABILIZED SUB-BASE - 4"
- ③ EXISTING HOT-MIX ASPHALT SHOULDERS - 9"
- ④ EXISTING HOT-MIX ASPHALT SHOULDERS - 10"
- ⑤ EXISTING HOT-MIX ASPHALT SHOULDERS - 11"
- ⑥ EXISTING AGGREGATE SHOULDERS, TYPE B
- ⑦ EXISTING PIPE UNDERDRAINS
- ⑧ EXISTING BITUMINOUS CURB
- ⑨ EXISTING JRPCC PAVEMENT - 11"
- ⑩ EXISTING TYPE A GUTTER
- ⑪ EXISTING HOT-MIX ASPHALT CONCRETE - 3"
- ⑫ PROPOSED HOT-MIX ASPHALT SHOULDERS - 3 3/4"
- ⑬ PROPOSED POLYMERIZED BCBC SUPER "E" N70 - 1 1/2"
- ⑭ PROPOSED POLYMERIZED BCBC SUPER IL19.0 N70 - 2 1/4"
- ⑮ PROPOSED POLYMERIZED BITUMINOUS MATERIALS - PRIME COAT
- ⑯ PROPOSED AGGREGATE PRIME COAT
- ⑰ EMBANKMENT
- ⑱ SUB-CRADE
- ⑲ STABILIZED SUB-BASE 4"
- ⑳ PCC PAVEMENT 10"
- ㉑ HOT-MIX ASPHALT SHOULDERS 10"
- ㉒ AGGREGATE SHOULDERS TYPE B
- ㉓ PROPOSED AGGREGATE SHOULDERS TYPE B
- ㉔ PCC SURFACE REM (CM) - 1/2"
- ㉕ PCC SURFACE REM (CM) - 2"
- ㉖ HOT MIX ASPHALT SURFACE REMOVAL - 2"
- ㉗ PROPOSED HOT-MIX ASPHALT SHOULDERS - 2"
- ㉘ HOT-MIX ASPHALT SURFACE REMOVAL - 1/2"

REVISIONS	
NAME	DATE

LOCATION #2
ILLINOIS DEPARTMENT OF TRANSPORTATION
TYPICAL SECTIONS
LOCATION #2
FAI 255, FAI 55/70
SECTION (60-7, 60-9)RS &
60-16-1,7-1)RS
MADISON COUNTY
SCALE: VERT. _____
HORIZ. _____
DATE _____ DRAWN BY _____
CHECKED BY _____

PLOT DATE: 5/11/2007
PLOT SCALE: 1/8"=1'-0"
REFERENCE: *REF*

F.A.I. RTE.	SECTION	COUNTY	TOTAL SHEETS	SHEET NO.
*	**	MADISON	37	11

STA. TO STA.
FED. ROAD DIST. NO. ILLINOIS FED. AID PROJECT

--255-55/70
**60-7, 60-9IRS AND 60-16-1,7-1RS

PARTIAL DEPTH PATCHING SCHEDULE - LOCATION #1																						
STATION	RT/LT	L	W	SY	STATION	RT/LT	L	W	SY	STATION	RT/LT	L	W	SY	STATION	RT/LT	L	W	SY			
RAMP 4				RAMP 5				RAMP 6				RAMP 6										
412+36		14	2	3.1	509+27		16	2	3.6	601+42		12	2	2.7	616+32		9	2	2.0			
412+75		16	2	3.6	509+65		16	2	3.6	601+82		14	2	3.1	617+09		2	2	0.4			
413+16		16	2	3.6	510+03		10	2	2.2	601+97		2	2	0.4	617+49		2	2	0.4			
413+54		10	2	2.2	510+41		16	2	3.6	602+20		16	2	3.6	618+06		16	2	3.6			
413+83		16	2	3.6	510+79		16	2	3.6	602+80		16	2	3.6	618+32		12	2	2.7			
414+02		16	2	3.6	510+96		6	2	1.3	603+85		8	2	1.8	618+40		6	2	1.3			
414+16		10	2	2.2	511+17		16	2	3.6	603+96		16	2	3.6	619+19		2	2	0.4			
RAMP 5				RAMP 5				RAMP 5				ROADWAY 'A'										
500+00		16	2	3.6	511+27		2	2	0.4	604+26		8	2	1.8	619+29		6	2	1.3			
500+55		16	2	3.6	511+55		16	2	3.6	604+36		16	2	3.6	619+35		16	2	3.6			
500+95		6	2	1.3	511+72		2	2	0.4	604+45		2	2	0.4	619+42		16	2	3.6			
501+10		8	2	1.8	511+94		16	2	3.6	604+52		2	2	0.4								
501+21		4	2	0.9	512+31		12	2	2.7	604+72		16	2	3.6	699+76	RT	30	2	6.7			
501+36		16	2	3.6	512+55		16	2	3.6	605+09		16	2	3.6	699+92	RT	12	2	1.7			
501+79		16	2	3.6	512+70		12	2	2.7	605+42		16	2	3.6	699+99	RT	6	2	1.3			
502+15		16	2	3.6	512+91		16	2	3.6	605+75		10	2	2.2	700+10	LT	8	2	1.8			
502+38		8	2	1.8	513+09		16	2	3.6	605+83		16	2	3.6	700+24	RT	15	2	3.3			
502+53		16	2	3.6	513+31		6	2	1.3	605+17		16	2	3.6	700+31	RT	12	6	8.0			
502+66		16	2	3.6	513+47		16	2	3.6	606+52		16	2	3.6	700+42	RT	3	2	0.7			
503+18		8	2	1.8	513+64		16	2	3.6	606+64		6	2	1.3	700+55	RT	4	2	0.9			
503+36		8	2	1.8	513+85		12	2	2.7	606+91		6	2	1.3	700+70	RT	12	2	2.7			
503+56		8	2	1.8	514+23		16	2	3.6	607+00		16	2	3.6	702+00	RT	12	2	2.7			
503+77		16	2	3.6	514+45		12	2	2.7	607+32		16	2	3.6	702+16	RT	12	2	2.7			
503+98		8	2	1.8	514+61		14	2	3.1	607+66		16	2	3.6	702+16	LT	12	2	2.7			
504+15		16	2	3.6	514+96		10	2	2.2	607+72		2	2	0.4	702+26	LT	12	2	2.7			
504+35		6	2	1.3	515+17		16	2	3.6	608+12		16	2	3.6	702+31	LT	2	2	0.4			
504+50		16	2	3.6	515+31		16	2	3.6	608+49		16	2	3.6	702+39	RT	12	2	2.7			
504+73		8	2	1.8	515+65		4	2	0.9	608+55		2	2	0.4	702+62	RT	16	2	3.6			
504+90		6	2	1.3	516+00		6	2	1.3	608+87		16	2	3.6	702+79	RT	12	2	2.7			
505+16		14	2	3.1	516+35		12	2	2.7	609+21		16	2	3.6	702+79	LT	4	2	0.9			
505+31		16	2	3.6	516+56		2	2	0.4	609+56		32	2	7.1	702+99	RT	12	2	2.7			
505+48		16	2	3.6	516+70		14	2	3.1	609+59		16	2	3.6	703+19	RT	12	2	2.7			
505+67		16	2	3.6	516+80		2	2	0.4	609+97		8	2	1.8	703+35	RT	8	2	1.8			
505+85		16	2	3.6	516+91		16	2	3.6	610+00		16	2	3.6	703+42	RT	8	2	1.8			
506+06		16	2	3.6	517+05		10	2	2.2	610+58		8	2	1.8	703+58	RT	12	2	2.7			
506+22		16	2	3.6	517+39		6	2	1.3	611+08		24	2	5.3	704+00	RT	12	2	2.7			
506+59		16	2	3.6	518+30		16	2	3.6	611+17		10	2	2.2	705+19	RT	12	2	2.7			
506+79		16	2	3.6	518+70		4	2	0.9	611+29		10	2	2.2	715+52	LT	2	2	0.4			
506+97		6	2	1.3	519+17		16	2	3.6	612+34		16	2	3.6	716+71	LT	8	2	1.8			
507+15		16	2	3.6	519+40		16	2	3.6	612+41		2	2	0.4	716+71	RT	12	2	2.7			
507+35		10	2	2.2	RAMP 6				613+25		8	2	1.8	716+86	RT	2	2	0.4				
507+50		20	2	4.4	600+12		16	2	3.6	613+64		8	2	1.8	717+11	RT	2	2	0.4			
507+73		16	2	3.6	600+33		4	2	0.9	614+18		6	2	1.3	717+33	RT	12	2	2.7			
508+12		16	2	3.6	600+45		2	2	0.4	614+26		16	2	3.6	717+40	RT	15	2	3.3			
508+50		16	2	3.6	600+52		16	2	3.6	615+55		4	2	0.9	717+50	LT	6	2	1.3			
508+88		16	2	3.6	600+82		16	2	3.6	615+93		3	2	0.7	717+50	RT	12	2	2.7			
SUB TOTAL				132.0	SUB TOTAL				118.2	SUB TOTAL				119.8	SUB TOTAL				103.6			
TOTAL OF PAGE																473.6						

PARTIAL DEPTH PATCHING SCHEDULE - LOCATION #1																						
STATION	RT/LT	L	W	SY	STATION	RT/LT	L	W	SY	STATION	RT/LT	L	W	SY	STATION	RT/LT	L	W	SY			
ROADWAY 'A'				ROADWAY 'A'				ROADWAY 'A'				ROADWAY 'B'										
717+73	RT	20	2	4.4	727+06	LT	10	2	2.2	734+18	LT	10	2	2.2	802+16	LT	6	2	1.3			
717+91	LT	6	2	1.3	727+06	RT	6	2	1.3	734+18	RT	10	2	2.2	802+32	LT	6	2	1.3			
717+91	RT	4	2	0.9	727+25	RT	30	2	6.7	734+50	RT	20	2	4.4	802+32	RT	4	2	0.9			
718+05	RT	16	2	3.6	727+45	LT	2	2	0.4	734+56	LT	2	2	0.4	802+45	RT	15	2	3.3			
718+30	LT	4	2	0.9	727+45	RT	4	2	0.9	734+56	RT	12	2	2.7	802+56	LT	2	2	0.4			
718+30	RT	8	2	1.8	727+85	LT	6	2	1.3	734+70	RT	8	2	1.8	802+72	RT	12	2	2.7			
718+49	RT	6	2	1.3	727+85	RT	8	2	1.8	734+80	RT	6	2	1.3	802+95	LT	4	2	0.9			
719+70	LT	2	2	0.4	728+00	RT	2	2	0.4	734+95	LT	8	2	1.8	804+55	LT	2	2	0.4			
719+32	RT	30	2	6.7	728+44	RT	2	2	0.4	734+95	RT	6	2	1.3	804+55	RT	10	2	2.2			
719+50	LT	6	2	1.3	728+65	RT	2	2	0.4	735+34	LT	6	2	1.3	804+72	LT	4	2	0.9			
719+58	RT	20	2	4.4	728+84	RT	12	2	2.7	735+34	RT	2	2	0.4	804+74	LT	2	2	0.4			
720+29	LT	8	2	1.8	729+05	RT	2	2	0.4	735+70	LT	8	2	1.8	804+74	RT	6	2	1.3			
720+29	RT	8	2	1.8	729+30	RT	2	2	0.4	735+70	RT	3	2	0.7	804+95	LT	6	2	1.3			
720+48	RT	15	2	3.3	729+45	LT	8	2	1.8	736+00	LT	12	2	2.7	805+20	RT	2	2	0.4			
720+54	RT	8	4	3.6	729+70	RT	20	2	4.4	736+00	RT	12	2	2.7	805+20	LT	2	2	0.4			
720+88	RT	15	2	3.3	729+85	LT	4	2	0.9	736+20	LT	2	2	0.4	805+35	LT	2	2	0.4			
721+09	LT	2	2	0.4	729+85	RT	2	2	0.4	736+20	RT	10	2	2.2	805+35	RT	12	2	2.7			
721+09	RT	2	2	0.4	730+24	LT	6	2	1.3	736+20	RT	10	2	2.2	805+47	LT	6	2	1.3			
721+29	RT	8	2	1.8	730+24	RT	4	2	0.9	736+33	RT	6	2	1.3	805+47	RT	12	2	2.7			
721+49	LT	2	2	0.4	730+47	RT	2	2	0.4	736+45	RT	6	2	1.3	805+74	LT	2	2	0.4			
721+65	RT	20	2	4.4	730+64	LT	2	2	0.4	736+59	LT	4	2	0.9	805+74	RT	4	2	0.9			
721+89	RT	8	2	1.8	730+64	RT	2	2	0.4	736+59	RT	2	2	0.4	805+97	LT	3					

F.A.I. RY.	SECTION	COUNTY	TOTAL SHEETS	SHEET NO.
*	**	MADISON	37	12

STA. TO STA.
 ILLINOIS FED. AID PROJECT
 •-255-55/70
 ••(60-7, 60-9)RS AND 60-(6-1,7-1)RS

PARTIAL DEPTH PATCHING SCHEDULE - LOCATION #1																													
STATION	RT/LT	L	W	SY	STATION	RT/LT	L	W	SY	STATION	RT/LT	L	W	SY															
ROADWAY 'B'					ROADWAY 'B'					ROADWAY 'B'																			
809+98	RT	12	2	2.7	827+39	RT	2	2	0.4	837+21	LT	8	2	1.8	849+76	RT	40	2	8.9										
810+62	LT	2	2	0.4	827+49	RT	2	2	0.4	837+21	RT	12	2	2.7	849+94	RT	12	2	2.7										
810+62	RT	2	2	0.4	827+60	LT	6	2	1.3	837+43	LT	4	2	0.9	849+94	LT	6	2	1.3										
810+79	RT	12	2	2.7	827+60	RT	2	2	0.4	837+43	RT	6	2	1.3	850+63	RT	6	2	1.3										
810+79	LT	12	2	2.7	828+00	LT	12	2	2.7	838+00	RT	4	2	0.9	850+63	LT	2	2	0.4										
811+20	RT	12	2	2.7	828+18	RT	3	2	0.7	838+27	RT	2	2	0.4	850+84	RT	30	2	6.7										
811+20	LT	12	2	2.7	828+40	LT	10	2	2.2	841+58	LT	12	2	2.7	851+43	RT	6	2	1.3										
811+93	LT	12	2	2.7	828+40	RT	4	2	0.9	841+80	RT	6	2	1.3	851+43	LT	6	2	1.3										
812+69	RT	2	2	0.4	828+81	LT	10	2	2.2	841+98	LT	10	2	2.2	851+60	RT	40	2	8.9										
812+79	LT	6	6	4.0	828+81	RT	8	2	1.8	841+98	RT	2	2	0.4	852+40	RT	2	2	0.4										
813+19	RT	4	2	0.9	829+00	LT	4	2	0.9	842+28	RT	4	2	0.9	852+80	RT	2	2	0.4										
813+19	LT	12	2	2.7	829+21	LT	6	2	1.3	842+49	RT	2	2	0.4	852+98	RT	16	2	3.6										
813+41	LT	3	2	0.7	829+21	RT	3	2	0.7	842+60	RT	2	2	0.4	853+25	RT	6	2	1.3										
813+46	LT	6	2	1.3	829+67	LT	6	2	1.3	842+68	RT	2	2	0.4	853+25	LT	2	2	0.4										
813+56	LT	6	3	2.0	829+67	RT	2	2	0.4	842+79	LT	8	2	1.8	853+56	RT	3	2	0.7										
813+81	LT	2	2	0.4	830+00	LT	16	2	3.6	842+90	RT	16	2	3.6	853+77	RT	20	2	4.4										
814+31	LT	2	2	0.4	830+00	RT	6	2	1.3	843+08	RT	16	2	3.6	853+84	RT	8	2	1.8										
814+36	LT	2	2	0.4	830+42	LT	8	2	1.8	843+24	RT	10	2	2.2	854+00	RT	40	2	8.9										
814+79	RT	8	2	1.8	830+42	RT	6	2	1.3	843+45	LT	15	3	5.0	854+00	RT	4	2	0.9										
814+87	LT	3	2	0.7	831+00	RT	20	2	4.4	843+45	RT	15	2	3.3	854+00	LT	6	2	1.3										
815+00	LT	2	2	0.4	831+22	LT	2	2	0.4	843+55	LT	7	12	9.3	854+44	RT	2	2	0.4										
823+46	RT	4	2	0.9	831+37	LT	30	2	6.7	843+77	LT	9	2	2.0	854+79	RT	4	2	0.9										
823+80	LT	4	2	0.9	831+59	LT	8	2	1.8	844+15	LT	6	2	1.3	854+90	RT	2	2	0.4										
823+80	RT	2	2	0.4	831+59	RT	10	2	2.2	844+57	RT	30	2	6.7	855+00	LT	3	2	0.7										
824+05	RT	2	2	0.4	831+81	LT	2	2	0.4	844+95	RT	40	2	8.9	855+29	RT	2	2	0.4										
824+86	RT	8	2	1.8	831+81	RT	3	2	0.7	845+37	RT	30	2	6.7	855+47	RT	2	2	0.4										
824+86	LT	4	2	0.9	832+00	LT	6	2	1.3	845+58	LT	6	2	1.3	855+63	RT	6	2	1.3										
825+00	RT	2	2	0.4	832+00	RT	8	2	1.8	845+75	RT	40	2	8.9	855+73	RT	4	2	0.9										
825+19	LT	8	2	1.8	832+40	LT	10	2	2.2	845+75	RT	6	2	1.3	855+87	RT	2	2	0.4										
825+19	RT	8	2	1.8	832+40	RT	10	2	2.2	846+61	RT	3	2	0.7	856+10	RT	4	2	0.9										
825+59	LT	8	2	1.8	832+80	RT	8	2	1.8	846+78	RT	3	2	0.7	856+10	LT	2	2	0.4										
825+59	RT	4	2	0.9	833+20	LT	12	2	2.7	847+19	RT	3	2	0.7	856+41	RT	2	2	0.4										
825+75	RT	2	2	0.4	833+20	RT	10	2	2.2	847+59	LT	10	2	2.2	856+51	RT	3	2	0.7										
825+80	RT	2	2	0.4	833+60	LT	12	2	2.7	847+59	RT	3	2	0.7	856+81	RT	2	2	0.4										
826+00	LT	6	2	1.3	833+60	RT	6	2	1.3	847+69	RT	40	2	8.9	856+92	RT	6	2	1.3										
826+26	RT	2	2	0.4	833+83	RT	2	2	0.4	848+00	LT	12	2	2.7	857+08	RT	8	2	1.8										
826+40	LT	8	2	1.8	834+00	LT	12	2	2.7	848+00	RT	4	2	0.9	857+08	LT	2	2	0.4										
826+40	RT	4	2	0.9	834+00	RT	4	2	0.9	848+25	LT	40	2	8.9	857+12	RT	2	2	0.4										
826+57	RT	2	2	0.4	834+41	RT	3	2	0.7	848+39	LT	12	2	2.7	857+29	RT	6	2	1.3										
826+68	RT	2	2	0.4	835+20	LT	3	2	0.7	848+39	RT	3	2	0.7	857+29	LT	3	2	0.7										
826+80	LT	6	2	1.3	835+20	RT	2	2	0.4	848+65	RT	30	2	6.7	857+73	RT	10	2	2.2										
826+80	RT	8	2	1.8	835+60	LT	6	2	1.3	848+80	LT	4	2	0.9	858+00	RT	6	2	1.3										
826+98	RT	2	2	0.4	835+79	RT	12	2	2.7	848+80	RT	6	2	1.3	858+40	RT	10	2	2.2										
827+08	RT	2	2	0.4	836+41	LT	4	2	0.9	848+90	RT	40	2	8.9	858+73	RT	6	2	1.3										
827+21	LT	4	2	0.9	836+62	LT	3	2	0.7	849+37	RT	20	2	4.4	859+68	RT	8	2	1.8										
827+21	RT	6	2	1.3	836+80	LT	8	2	1.8	849+52	RT	3	2	0.7	860+07	RT	8	2	1.8										
SUB TOTAL				57.6	SUB TOTAL				73.8	SUB TOTAL				135.2	SUB TOTAL				82.7										
TOTAL OF PAGE															349.2														

PARTIAL DEPTH PATCHING SCHEDULE - LOCATION #1														
STATION	RT/LT	L	W	SY	STATION	RT/LT	L	W	SY	STATION	RT/LT	L	W	SY
ROADWAY 'B'					ROADWAY 'B'					ROADWAY 'B'				
860+07	LT	4	2	0.9	865+87	LT	8	2	1.8					0.0
860+47	RT	10	2	2.2	865+95	LT	2	2	0.4					0.0
860+47	LT	10	2	2.2	865+95	RT	5	2	1.1					0.0
860+50	LT	4	2	0.9	866+03	RT	2	2	0.4					0.0
860+74	RT	10	2	2.2	866+03	LT	2	2	0.4					0.0
860+88	RT	8	2	1.8	866+28	RT	2	2	0.4					0.0
860+88	LT	4	2	0.9	866+28	LT	2	2	0.4					0.0
861+00	RT	10	2	2.2	866+35	RT	4	2	0.9					0.0
861+23	RT	6	2	1.3	866+50	RT	4	2	0.9					0.0
861+23	LT	2	2	0.4	866+55	RT	3	2	0.7					0.0
861+61	RT	6	2	1.3	866+68	RT	3	2	0.7					0.0
862+00	LT	10	2	2.2	866+74	LT	3	2	0.7					0.0
862+00	RT	10	2	2.2					0.0					0.0
862+18	LT	2	2	0.4					0.0					0.0
862+18	RT	12	2	2.7					0.0					0.0
862+26	RT	2	2	0.4					0.0					0.0
862+60	RT	12	2	2.7					0.0					0.0
862+60	LT	12	2	2.7					0.0					0.0
862+83	LT	6	2	1.3					0.0					0.0
862+83	RT	3	2	0.7					0.0					0.0
863+00	RT	10	2	2.2					0.0					0.0
863+00	LT	4	2	0.9					0.0					0.0
863+37	LT	4	2	0.9					0.0					0.0
863+37	RT	12	2	2.7					0.0					0.0
863+48	RT	12	2	2.7					0.0					0.0
863+48	LT	4	2	0.9					0.0					0.0
863+63	LT	2	2	0.4					0.0					0.0
863+63	RT	6	2	1.3					0.0					0.0
863+82	LT	2	2	0.4					0.0					0.0
863+82	RT	12	2	2.7					0.0					0.0
864+00	LT	3	2	0.7					0.0					0.0
864+43	LT	10	2	2.2					0.0					0.0
864+43	RT	6	2	1.3					0.0					0.0
864+59	LT	6	2	1.3					0.0					0.0
864+83	LT	6	2	1.3					0.0					0.0
864+83	RT	6	2	1.3					0.0					0.0
865+00	LT	6	2	1.3					0.0					0.0
865+00	RT	12	2	2.7					0.0					0.0
865+07	RT	3	2	0.7					0.0					0.0
865+20	LT	6	2	1.3					0.0					0.0
865+20	RT	10	2	2.2					0.0					0.0
865+41	RT	6	2	1.3				</						

CONTRACT NO. 76B15

F.A.I. RTE.	SECTION	COUNTY	TOTAL SHEETS	SHEET NO.
*	**	MADISON	37	13

FED. ROAD DIST. NO.	ILLINOIS FED. AID PROJECT
**255-55/70	**60-7, 60-9IRS AND 60-16-1,7-1IRS

PARTIAL DEPTH PATCHING SCHEDULE - LOCATION #1

STATION	RT/LT	L	W	SY	STATION	RT/LT	L	W	SY	STATION	RT/LT	L	W	SY	STATION	RT/LT	L	W	SY			
RAMP 1					RAMP 2					RAMP 3					RAMP 3							
393+82		2	2	0.4	200+34		2	2	0.4	298+43		10	2	2.2	323+00		8	2	1.8			
394+60		3	2	0.7	200+69		4	5	2.2	298+83		8	2	1.8	323+31		6	2	1.3			
395+80		10	2	2.2	200+83		16	2	3.6	299+23		16	2	3.6	323+31		20	2	4.4			
396+10		12	2	2.7	201+00		16	2	3.6	299+36		16	2	3.6	323+62		10	2	2.2			
396+50		12	2	2.7	201+18		5	4	2.2	300+03		6	2	1.3	323+78		10	2	2.2			
396+67		16	2	3.6	201+61		14	2	3.1	300+69		6	2	1.3	324+17		4	2	0.9			
396+87		16	2	3.6	201+61		5	2	1.1	307+36		6	2	1.3	324+57		4	2	0.9			
397+26		14	2	3.1	201+61		10	2	2.2	308+55		6	2	1.3	324+97		2	2	0.4			
397+48		16	2	3.6	202+00		14	2	3.1	309+74		8	2	1.8	RAMP 4							
397+85		16	2	3.6	202+06		4	4	1.8	313+77		8	2	1.8	393+82		2	2	0.4			
398+24		16	3	5.3	202+19		4	2	0.9	314+40		16	2	3.6	394+60		3	2	0.7			
398+37		16	2	3.6	202+38		3	2	0.7	315+24		16	2	3.6	395+80		10	2	2.2			
398+72		16	2	3.6	202+47		5	2	1.1	315+46		16	2	3.6	396+10		12	2	2.7			
399+09		16	2	3.6	202+75		6	4	2.7	315+60		6	2	1.3	396+50		12	2	2.7			
399+48		12	2	2.7	203+16		6	2	1.3	316+04		6	2	1.3	396+67		16	2	3.6			
399+85		16	2	3.6	203+39		8	2	1.8	316+44		16	2	3.6	396+87		16	2	3.6			
400+20		10	2	2.2	203+59		10	2	2.2	316+67		2	2	0.4	397+26		14	2	3.1			
400+50		14	2	3.1	203+78		4	4	1.8	316+84		8	2	1.8	397+48		16	2	3.6			
400+96		10	2	2.2	204+18		4	4	1.8	317+20		6	2	1.3	397+85		16	2	3.6			
401+36		10	2	2.2	205+36		7	3	2.3	317+66		14	2	3.1	398+24		16	3	5.3			
401+83		8	2	1.8	207+13		3	3	1.0	317+82		6	2	1.3	398+37		16	2	3.6			
402+31		10	2	2.2	208+52		7	6	4.7	317+95		2	2	0.4	398+72		16	2	3.6			
402+69		10	2	2.2	208+94		7	5	3.9	318+03		12	2	2.7	399+09		16	2	3.6			
402+69		36	2	8.0	209+87		9	4	4.0	318+41		16	2	3.6	399+48		12	2	2.7			
403+85		8	2	1.8	210+23		4	4	1.8	318+62		8	2	1.8	399+85		16	2	3.6			
404+00		16	2	3.6	210+50		6	2	1.3	318+79		12	2	2.7	400+20		10	2	2.2			
404+10		3	2	0.7	210+72		8	2	1.8	318+82		2	2	0.4	400+50		14	2	3.1			
404+15		8	2	1.8	210+91		8	6	5.3	319+17		16	2	3.6	400+96		10	2	2.2			
405+73		16	2	3.6	211+72		4	2	0.9	319+17		8	2	1.8	401+36		10	2	2.2			
405+96		16	2	3.6	214+84		12	2	2.7	319+56		16	2	3.6	401+83		8	2	1.8			
408+24		16	2	3.6	216+15		8	2	1.8	319+77		2	2	0.4	402+31		10	2	2.2			
408+78		2	2	0.4	218+82		5	6	3.3	319+94		16	2	3.6	402+69		10	2	2.2			
409+12		6	2	1.3	225+13		10	3	3.3	320+32		16	2	3.6	402+69		36	2	8.0			
409+50		2	2	0.4	230+96		7	2	1.6	320+70		12	2	2.7	403+85		8	2	1.8			
409+86		16	2	3.6	RAMP 3					321+09		2	2	0.4	404+00		16	2	3.6			
411+17		8	2	1.8	293+97		4	2	0.9	321+25		12	2	2.7	404+10		3	2	0.7			
412+00		14	2	3.1	294+46		100	2	22.2	321+35		16	2	3.6	404+15		8	2	1.8			
412+36		14	2	3.1	294+58		8	2	1.8	321+47		6	2	1.3	405+73		16	2	3.6			
412+75		16	2	3.6	294+80		6	2	1.3	321+67		20	2	4.4	405+96		16	2	3.6			
413+16		16	2	3.6	295+36		2	2	0.4	321+75		10	2	2.2	408+24		16	2	3.6			
413+54		10	2	2.2	296+40		10	2	2.2	321+85		10	2	2.2	408+78		2	2	0.4			
413+83		16	2	3.6	296+80		10	2	2.2	321+85		30	2	6.7	409+12		6	2	1.3			
414+02		16	2	3.6	297+22		4	2	0.9	322+24		10	2	2.2	409+50		2	2	0.4			
414+16		10	2	2.2	297+39		10	2	2.2	322+42		20	2	4.4	409+86		16	2	3.6			
					297+62		6	2	1.3	322+62		8	2	1.8	411+17		8	2	1.8			
					297+85		16	2	3.6	322+80		40	2	8.9	412+00		14	2	3.1			
SUB TOTAL				123.1	SUB TOTAL				116.3	SUB TOTAL				116.4	SUB TOTAL				115.6			
TOTAL OF PAGE																				471.4		

TOTAL PARTIAL DEPTH PATCHING - LOCATION #1 = 194 TONS

PLOT DATE: 8/11/2007
 FILE NAME: c:\projects\76b15\76b15.dgn
 PLOT SCALE: 1/8" = 1'-0"
 USER: NAME: s11111

REVISIONS		DATE
NAME		

ILLINOIS DEPARTMENT OF TRANSPORTATION
 PARTIAL DEPTH PATCHING
 SCHEDULE
 FAI 255, FAI 55/70
 SECTION (60-7, 60-9)RS &
 60-16-1,7-1)RS
 MADISON COUNTY

VERT. SCALE: DRAWN BY
 HORIZ. SCALE: CHECKED BY
 DATE:

F.A.I. RTE.	SECTION	COUNTY	TOTAL SHEETS	SHEET NO.
..	..	MADISON	37	14

STA.	TO STA.
FED. ROAD DIST. NO.	ILLINOIS FED. AID PROJECT

•-255-55/70
 ••(60-7, 60-9)RS AND 60-(6-1,7-1)RS

CLASS B PAVEMENT PATCHING SCHEDULE - LOCATION #1

PATCH NUMBER	LOCATION STATION	LANE	PATCH WIDTH	PATCH LENGTH	PATCH SIZE	CLASS B PATCHES TYPE I	CLASS B PATCHES TYPE II	CLASS B PATCHES TYPE III	CLASS B PATCHES TYPE IV	X PRECOATED DOWEL BAR EACH	SAWCUT FEET	X TYPE A PAV'T FAB SQ. YDS.
			FEET	FEET	SO. YDS.	SO. YDS.	SO. YDS.	SO. YDS.	SO. YDS.	SO. YDS.	SO. YDS.	FEET
ROADWAY 'B'												
800+00	RIGHT		12	6	8.0		8.0			10	36	0.0
800+00	LEFT		12	6	8.0		8.0			10	36	0.0
800+40	RIGHT		12	6	8.0		8.0			10	36	0.0
800+58	RIGHT		12	6	8.0		8.0			10	36	0.0
801+00	RIGHT		12	6	8.0		8.0			10	36	0.0
801+00	LEFT		12	6	8.0		8.0			10	36	0.0
801+34	RIGHT		6	6	4.0	4.0				10	24	0.0
801+34	LEFT		6	6	4.0	4.0				10	24	0.0
801+55	RIGHT		6	6	4.0	4.0				10	24	0.0
801+55	LEFT		12	6	8.0		8.0			10	36	0.0
801+74	LEFT		6	6	4.0	4.0				10	24	0.0
801+74	RIGHT		12	6	8.0		8.0			10	36	0.0
801+87	RIGHT		12	6	8.0		8.0			10	36	0.0
801+87	LEFT		12	6	8.0		8.0			10	36	0.0
802+16	RIGHT		12	6	8.0		8.0			10	36	0.0
802+56	RIGHT		12	6	8.0		8.0			10	36	0.0
802+95	RIGHT		12	6	8.0		8.0			10	36	0.0
803+36	RIGHT		12	6	8.0		8.0			10	36	0.0
803+54	LEFT		12	6	8.0		8.0			10	36	0.0
803+54	RIGHT		12	6	8.0		8.0			10	36	0.0
803+76	LEFT		6	6	4.0	4.0				10	24	0.0
803+76	RIGHT		12	6	8.0		8.0			10	36	0.0
804+15	RIGHT		12	6	8.0		8.0			10	36	0.0
804+32	LEFT		12	6	8.0		8.0			10	36	0.0
804+32	RIGHT		15	6	10.0		10.0			10	42	0.0
804+55	RIGHT		15	7	11.7		11.7			12	44	0.0
804+95	RIGHT		16	6	10.7		10.7			10	44	0.0
806+62	LEFT		12	6	8.0		8.0			10	36	0.0
810+38	RIGHT		12	6	8.0		8.0			10	36	0.0
814+44	RIGHT		12	6	8.0		8.0			10	36	0.0
814+44	LEFT		12	6	8.0		8.0			10	36	0.0
814+79	LEFT		12	6	8.0		8.0			10	36	0.0
824+62	RIGHT		12	6	8.0		8.0			10	36	0.0
824+62	LEFT		12	6	8.0		8.0			10	36	0.0
835+79	LEFT		12	6	8.0		8.0			10	36	0.0
840+28	RIGHT		6	6	4.0	4.0				10	24	0.0
840+28	LEFT		6	6	4.0	4.0				10	24	0.0
843+35	LEFT		12	6	8.0		8.0			10	36	0.0
843+35	RIGHT		12	6	8.0		8.0			10	36	0.0
843+77	RIGHT		12	6	8.0		8.0			10	36	0.0
859+45	RIGHT		12	6	8.0		8.0			10	36	0.0
864+00	RIGHT		12	6	8.0		8.0			10	36	0.0
864+59	RIGHT		12	6	8.0		8.0			10	36	0.0
866+14	LEFT		12	6	8.0		8.0			10	36	0.0
866+14	RIGHT		12	6	8.0		8.0			10	36	0.0
866+97	RIGHT		12	6	8.0		8.0			10	36	0.0
ROADWAY 'A'												
699+07	RIGHT		12	12	16.0			16.0		20	48	16.0
699+07	LEFT		12	6	8.0		8.0			10	36	0.0
700+05	RIGHT		12	20	26.7				26.7	33	64	26.7
700+31	RIGHT		12	6	8.0		8.0			10	36	0.0
735+15	RIGHT		12	6	8.0		8.0			10	36	0.0
735+45	RIGHT		12	6	8.0		8.0			10	36	0.0
SUB-TOTAL A & B RAMPS			592	333	423.0	28.0	352.3	16.0	26.7	556	1850	42.7

REVISIONS	
NAME	DATE

ILLINOIS DEPARTMENT OF TRANSPORTATION
CLASS B PATCHING SCHEDULE
 FAI 255, FAI 55/70
 SECTION (60-7, 60-9)RS & 60-(6-1,7-1)RS
 MADISON COUNTY

SCALE: VERT. _____
 HORIZ. _____
 DATE _____ DRAWN BY _____
 CHECKED BY _____

PLOT DATE = 8/1/2007
 FILE NAME = c:\projects\76b15\76b15.dgn
 PLOT SCALE = 1/8"=1'-0"
 USER NAME = jf1000

F.A.I. RTE.	SECTION	COUNTY	TOTAL SHEETS	SHEET NO.
•	••	MADISON	37	15
STA.		TO STA.		
FED. ROAD DIST. NO.		ILLINOIS FED. AID PROJECT		
**255-55/70				
**60-7, 60-9IRS AND 60-16-1,7-1IRS				

CLASS B PAVEMENT PATCHING SCHEDULE - LOCATION #1

PATCH NUMBER	LOCATION STATION	LANE	PATCH WIDTH FEET	PATCH LENGTH FEET	PATCH SIZE SQ. YDS.	CLASS B PATCHES TYPE I SQ. YDS.	CLASS B PATCHES TYPE II SQ. YDS.	CLASS B PATCHES TYPE III SQ. YDS.	CLASS B PATCHES TYPE IV SQ. YDS.	X PRECOATED DOWEL BAR EACH	SAWCUT FEET	X TYPE A PAV'T FAB SQ. YDS.
ROADWAY 'A' CONTINUED												
	735+45	LEFT	12	6	8.0		8.0			10	36	
	737+27	LEFT	12	6	8.0		8.0			10	36	
	737+27	RIGHT	12	8	10.7		10.7			13	40	
	737+70	RIGHT	12	6	8.0		8.0			10	36	
	737+70	LEFT	12	6	8.0		8.0			10	36	
	738+00	RIGHT	12	6	8.0		8.0			10	36	
	738+30	LEFT	12	6	8.0		8.0			10	36	
	738+30	RIGHT	12	6	8.0		8.0			10	36	
RAMP 1												
	111+15		16	6	10.7		10.7			10	44	
	111+36		16	6	10.7		10.7			10	44	
RAMP 2												
	216+74		25	8	22.2			22.2		13	66	22.2
	216+85		6	8	5.3		5.3			13	28	
	217+48		16	10	17.8			17.8		17	52	17.8
	217+85		16	6	10.7		10.7			10	44	
	221+00		16	6	10.7		10.7			10	44	
	223+00		16	6	10.7		10.7			10	44	
	224+21		16	6	10.7		10.7			10	44	
	224+63		16	6	10.7		10.7			10	44	
	226+32		16	6	10.7		10.7			10	44	
	226+79		8	6	5.3		5.3			10	28	
	226+90		8	6	5.3		5.3			10	28	
	227+38		8	6	5.3		5.3			10	28	
	227+64		16	40	71.1				71.1	67	112	71.1
	228+23		16	10	17.8			17.8		17	52	17.8
	228+58		16	8	14.2		14.2			13	48	0.0
	229+14		16	6	10.7		10.7			10	44	0.0
	229+68		16	25	44.4				44.4	42	82	44.4
RAMP 3												
	293+78		4	6	2.7	2.7				10	20	
	294+18		6	6	4.0	4.0				10	24	
	296+99		16	6	10.7		10.7			10	44	
SUB-TOTAL A & B RAMPS												
			592	333	423	28.0	352.3	16.0	26.7	556	1850	42.7
SUB-TOTAL A, 1, 2 & 3 RAMPS												
			401	249	388.9	6.7	208.9	57.8	115.6	416	1300	173.3
TOTAL A, B, 1, 2 & 3 RAMPS												
			993	582	811.9	34.7	561.2	73.8	142.3	972	3150	216.0

REVISIONS	
NAME	DATE

ILLINOIS DEPARTMENT OF TRANSPORTATION
 CLASS B PATCHING SCHEDULE
 FAI 255, FAI 55/70
 SECTION 60-7, 60-9IRS & 60-16-1,7-1IRS
 MADISON COUNTY
 SCALE: VERT. _____
 HORIZ. _____
 DATE _____
 DRAWN BY _____
 CHECKED BY _____

PLOT DATE: 6/11/2007
 FILE NAME: c:\vpro\pctsa\ed8387\cadd\pl\48337.dwg
 PLOT SCALE: 0.83888 / IN.
 USER NAME: aiford

F.A.I. RTE.	SECTION	COUNTY	TOTAL SHEETS	SHEET NO.
*	**	MADISON	37	16
STA. TO STA.				
FED. ROAD DIST. NO. ILLINOIS FED. AID PROJECT				
--255-55/70				
**160-7, 60-9)RS AND 60-(6-1,7-1)RS				

FULL DEPTH PAVEMENT PATCHING SCHEDULE - LOCATION #2

CLASS A PAVEMENT PATCHING 11 INCH SCHEDULE

LOCATION STATION	LANE LENGTH (FT.)	LANE WIDTH (FT.)	CLASS A PATCHES TYPE I (SQ. YD.)	CLASS A PATCHES TYPE II (SQ. YD.)	CLASS A PATCHES TYPE III (SQ. YD.)	CLASS A PATCHES TYPE IV (SQ. YD.)	PATCHING REINF. (SQ. YD.)	TIE BARS NO. 6 (EACH)	SAWCUT (FT.)
Ramp 1: I270 (EB) to I255 (SB)									
148 + 04.47	30.0	16.0				53.3	53.3	14	124.0
148 + 20	4.0	16.0		7.1			7.1		72.0
177 + 00	12.0	16.0			21.3		21.3		88.0
TOTAL				7.1	21.3	28.4	81.8	14	284.0

CLASS A PAVEMENT PATCHING 11 INCH SCHEDULE

LOCATION STATION	LANE LENGTH (FT.)	LANE WIDTH (FT.)	CLASS A PATCHES TYPE I (SQ. YD.)	CLASS A PATCHES TYPE II (SQ. YD.)	CLASS A PATCHES TYPE III (SQ. YD.)	CLASS A PATCHES TYPE IV (SQ. YD.)	PATCHING REINF. (SQ. YD.)	TIE BARS NO. 6 (EACH)	SAWCUT (FT.)
Ramp 3: I255 (SB) to I270 (WB)									
761 + 50	10.0	12.0		13.3			13.3		68.0
782 + 62	6.0	12.0		8.0			8.0		60.0
793 + 18 IL. III Ramp	12.0	16.0			21.3		21.3		88.0
798 + 46 IL. III Ramp	50.0	16.0				88.9	88.9	24	164.0
TOTAL				21.3	21.3	88.9	131.6	24	380.0

CLASS A PAVEMENT PATCHING 11 INCH SCHEDULE

LOCATION STATION	LANE LENGTH (FT.)	LANE WIDTH (FT.)	CLASS A PATCHES TYPE I (SQ. YD.)	CLASS A PATCHES TYPE II (SQ. YD.)	CLASS A PATCHES TYPE III (SQ. YD.)	CLASS A PATCHES TYPE IV (SQ. YD.)	PATCHING REINF. (SQ. YD.)	TIE BARS NO. 6 (EACH)	SAWCUT (FT.)
Ramp 4: I270 (WB) to I255 (SB)									
462 + 52	10.0	16.0			17.8		17.8		84.0
468 + 50	180.0	16.0				320.0	320.0	89	424.0
469 + 64	15.0	16.0				26.7	26.7		94.0
476 + 90	20.0	16.0				35.6	35.6	9	104.0
TOTAL					17.8	382.2	400.0	98	706.0

CLASS A PAVEMENT PATCHING 14 INCH SCHEDULE

LOCATION STATION	LANE LENGTH (FT.)	LANE WIDTH (FT.)	CLASS A PATCHES TYPE I (SQ. YD.)	CLASS A PATCHES TYPE II (SQ. YD.)	CLASS A PATCHES TYPE III (SQ. YD.)	CLASS A PATCHES TYPE IV (SQ. YD.)	PATCHING REINF. (SQ. YD.)	TIE BARS NO. 6 (EACH)	SAWCUT (FT.)
Ramp 6: I255 (NB) to I270 (WB)									
1551 + 46	6.0	60.0				40.0	40.0		252.0
1567 + 30	4.0	16.0		7.1			7.1		72.0
1577 + 80	4.0	16.0		7.1			7.1		72.0
1593 + 50	20.0	32.0				71.1	71.1	9	168.0
703 + 18	8.0	16.0		14.2			14.2		80.0
703 + 26	10.0	16.0			17.8		17.8		84.0
708 + 50	10.0	16.0			17.8		17.8		84.0
708 + 60	10.0	16.0			17.8		17.8		84.0
731 + 51	6.0	170.0				113.3	113.3		692.0
TOTAL				28.4	53.3	224.4	306.2	9	1588.0

CLASS A PAVEMENT PATCHING 11 INCH SCHEDULE

LOCATION STATION	LANE LENGTH (FT.)	LANE WIDTH (FT.)	CLASS A PATCHES TYPE I (SQ. YD.)	CLASS A PATCHES TYPE II (SQ. YD.)	CLASS A PATCHES TYPE III (SQ. YD.)	CLASS A PATCHES TYPE IV (SQ. YD.)	PATCHING REINF. (SQ. YD.)	TIE BARS NO. 6 (EACH)	SAWCUT (FT.)
Ramp 7: I255 (NB) to I270 (EB)									
722 + 75	10.0	12.0		13.3			13.3		68.0
TOTAL				13.3			13.3		68.0

CLASS A PAVEMENT PATCHING 11 INCH SCHEDULE

LOCATION STATION	LANE LENGTH (FT.)	LANE WIDTH (FT.)	CLASS A PATCHES TYPE I (SQ. YD.)	CLASS A PATCHES TYPE II (SQ. YD.)	CLASS A PATCHES TYPE III (SQ. YD.)	CLASS A PATCHES TYPE IV (SQ. YD.)	PATCHING REINF. (SQ. YD.)	TIE BARS NO. 6 (EACH)	SAWCUT (FT.)	FRENCH DRAIN (CUL. YD.)
Mainline I255 (NB)										
+ 1 - Inside			0.0				0.0		0.0	
+ 2 - center			0.0				0.0		0.0	
1568 + 0 3 - outside	50.0	12.0				66.7	66.7	24	148.0	10
1579 + 0	50.0	12.0				66.7	66.7	24	148.0	10
TOTAL						133.3	133.3	48	296.0	20

PATCHING SCHEDULE - LOCATION #2

PARTIAL DEPTH PATCHING					PARTIAL DEPTH REMOVAL 2"				
STATION	RT/LT	L	W	SY	STATION	RT/LT	L	W	SY
RAMP 1: I270 (EB) to I255 (SB)					RAMP 1: I270 (EB) to I255 (SB)				
148+04		100	2	22.2	148+04 to 149+04		100	2	22.2
158+60		100	2	22.2	158+60 to 159+60		100	2	22.2
169+16		1584	2	352.0	169+16 to 185+00		1584	2	352.0
RAMP 4: I270 (WB) to I255 (SB)					RAMP 4: I270 (WB) to I255 (SB)				
467+25		8	2	1.8	467+25		8	2	1.8
467+33		10	2	2.2	467+33		10	2	2.2
467+45		12	2	2.7	467+45		12	2	2.7
466+30		1060	2	235.6	466+30		1060	2	235.6
477+10		125	2	27.8	477+10		125	2	27.8
RAMP 7: I255 (NB) to I270 (EB)					RAMP 7: I255 (NB) to I270 (EB)				
709+00		100	2	22.2	709+00		100	2	22.2
722+85		100	2	22.2	722+85		100	2	22.2
SUB TOTAL TONS (PRIME)					SUB TOTAL SQ. YD.				
					710.9				

TOTAL PARTIAL DEPTH PATCHING - LOCATION #2 = 80 TONS

PLOT DATE: 5/11/2007
 USER: aiforb
 FILE NAME: \\s01\p1\m08337\cadd\p1\m08337.dgn
 PLOT SCALE: 0.500000 / IN.
 USER NAME: aiforb

REVISIONS	
NAME	DATE

ILLINOIS DEPARTMENT OF TRANSPORTATION
**FULL DEPTH & CLASS A
 PATCHING SCHEDULES**
 FAI 255, FAI 55/70
 SECTION 160-7, 60-9)RS &
 60-(6-1,7-1)RS
 MADISON COUNTY

SCALE: VERT. / HORIZ.
 DATE: DRAWN BY: CHECKED BY:

F.A.I. RTE.	SECTION	COUNTY	TOTAL SHEETS	SHEET NO.
*	**	MADISON	37	17

STA. TO STA.
 ILLINOIS FED. AID PROJECT
 **255-55/70
 **160-7, 60-9IRS AND 60-(6-1,7-1)RS

AGGREGATE SHOULDERS, TYPE B		
LOCATION	AGGREGATE WEDGE SHOULDERS, TYPE B (TONS)	
	INSIDE	OUTSIDE
LOCATION #1		
RAMP 1	STA. 1272+55 TO STA. 101+70 TO STA. 161+40	13.3
RAMP 2	STA. 470+00 TO 490+00	54.6
RAMP 3	STA. 200+00 TO 232+26	9.9
RAMP 4	STA. 800+00 TO 811+82	29.5
RAMP 5	STA. 301+00 TO STA. 315+54	10.8
RAMP 6	STA. 152+20 TO STA. 161+75	13.3
RAMP 7	STA. 400+00 TO STA. 414+16	8.7
RAMP 8	STA. 500+00 TO STA. 519+40	13.0
RAMP 9	STA. 600+00 TO STA. 619+42	17.7
RAMP 10	STA. 699+90 TO STA. 738+77	17.8
RAMP 11	STA. 800+00 TO STA. 867+04	35.6
RAMP 12	STA. 148+04 TO STA. 179+64	61.3
RAMP 13	STA. 212+58 TO STA. 231+00	
RAMP 14	STA. 1638+00 TO STA. 340+48 TO STA. 366+35	7.0
RAMP 15	STA. 462+62 TO STA. 485+46	23.7
RAMP 16	STA. 580+00 TO STA. 613+93	20.9
RAMP 17	STA. 1558+00 TO 1593+70	31.0
RAMP 18	STA. 693+63 TO STA. 792+00	32.7
RAMP 19	STA. 717+30 TO STA. 720+67	90.0
RAMP 20	STA. 703+19 TO STA. 722+55	-3.1
RAMP 21	STA. 872+40 TO STA. 885+00	17.7
RAMP 22		11.5
TOTAL		528.7

SURFACE REMOVAL SCHEDULE							
LOCATION	HOT-MIX ASPHALT SURFACE REMOVAL - 2"	HOT-MIX ASPHALT SURFACE REMOVAL (SHOULDERS) - 1/2"	PCC SURFACE REMOVAL (CM) - 2"	PCC SURFACE REMOVAL (CM) - 1/2"	HOT-MIX ASPHALT SURFACE REMOVAL - BUTT JOINT	PCC SURFACE REMOVAL - BUTT JOINT	SO. YD.
LOCATION #1							
RAMP 1	STA. 1272+55 TO STA. 101+70 TO STA. 161+40	1,617		2,587			
RAMP 2	STA. 470+00 TO 490+00		2,030		2,900		32
RAMP 3	STA. 200+00 TO 232+26		9,330				32
RAMP 4	STA. 800+00 TO 811+82	1,200		1,920			32
RAMP 5	STA. 301+00 TO STA. 315+54		5,018		5,735		32
RAMP 6	STA. 152+20 TO STA. 161+75						
RAMP 7	STA. 400+00 TO STA. 414+16						
RAMP 8	STA. 500+00 TO STA. 519+40						
RAMP 9	STA. 600+00 TO STA. 619+42						
RAMP 10	STA. 699+90 TO STA. 738+77						
RAMP 11	STA. 800+00 TO STA. 867+04						
LOCATION #2							
RAMP 1	STA. 148+04 TO STA. 179+64						
RAMP 2	STA. 212+58 TO STA. 231+00						
RAMP 3	STA. 1638+00 TO STA. 340+48 TO STA. 366+35		1,024				24
RAMP 4	STA. 462+62 TO STA. 485+46		6,899				
RAMP 5	STA. 580+00 TO STA. 613+93						
RAMP 6	STA. 1558+00 TO 1593+70		4,760		4,760		24
RAMP 7	STA. 693+63 TO STA. 792+00		13,116		26,232		24
RAMP 8	STA. 717+30 TO STA. 720+67		-449		-899		48
RAMP 9	STA. 703+19 TO STA. 722+55						
RAMP 10	STA. 872+40 TO STA. 885+00						
MAINLINE							
I255 (NB)	STA. 1556+00 TO STA. 1557+00 TO STA.		9,333		16,800		144
I255 (SB)	STA. 1557+00 TO STA.		11,556		20,800		144
TOTAL		2,817	62,617	4,507	76,328	24	512

* PAID AS PORTLAND CEMENT CONCRETE SURFACE REMOVAL (COLD MILLING)

PLOT DATE: 5/11/2007
 FILE NAME: C:\Users\jacob\Documents\76B15\76B15.dgn
 PLOT SCALE: 1/8" = 1'-0"
 USER NAME: jacob

REVISIONS	
NAME	DATE

ILLINOIS DEPARTMENT OF TRANSPORTATION
 AGGREGATE SHOULDERS, TYPE A & SURFACE REMOVAL SCHEDULES
 FAI 255, FAI 55/70
 SECTION 160-7, 60-9IRS & 60-(6-1,7-1)RS
 MADISON COUNTY
 SCALE: VERT. / HORIZ.
 DATE: / /
 DRAWN BY: / /
 CHECKED BY: / /

F.A.I. RTE.	SECTION	COUNTY	TOTAL SHEETS	SHEET NO.
*	**	MADISON	37	18

STA. TO STA.
 FED. ROAD DIST. NO. ILLINOIS FED. AID PROJECT
 •-255-55/70
 ••(60-7, 60-9)RS AND 60-(6-1,7-1)RS

PAVING SCHEDULE

LOCATION	POLYMERIZED HMA SURFACE CSE, SMA, N80	POLYMERIZED HMA BINDER CSE, SMA, N80	HMA SHOULDERS - 3/4"	HMA SHOULDERS - 2"	POLYMERIZED BIT. MATERIALS (PRIME COAT)	AGGREGATE PRIME COAT
LOCATION #1	TON	TON	SO. YDS.	SO. YDS.	TON	TON
RAMP 1						
STA. 1272+55 TO STA. 101+70 TO STA. 114+75	21.0	30.5	2,030.0	1,616.7	0.5	4.9
STA. 114+75 TO STA. 161+40	88.0	130.6	9,330.0		1.6	15.7
RAMP 2						
STA. 479+20 TO STA. 490+00				1,200.0	0.4	3.6
STA. 200+00 TO STA. 232+26	41.0	60.2	5,018.2		3.4	32.3
RAMP 3						
STA. 800+00 TO STA. 811+82						
STA. 301+00 TO STA. 315+54						
STA. 152+20 TO STA. 161+75						
RAMP 4						
STA. 400+00 TO STA. 414+16						
RAMP 5						
STA. 500+00 TO STA. 519+40						
RAMP 6						
STA. 600+00 TO STA. 619+42						
ROADWAY "A"						
STA. 699+90 TO STA. 738+77						
ROADWAY "B"						
STA. 800+00 TO STA. 867+04						
LOCATION #2						
RAMP 1						
STA. 148+04 TO STA. 179+64						
RAMP 2						
STA. 212+58 TO STA. 231+00						
RAMP 3						
STA. 1638+00 TO STA. 340+48 TO STA. 366+35	3.6	5.4	1,024.0		0.3	3.1
STA. 340+48 TO STA. 366+35	24.2	36.2	3,449.3		2.2	20.7
RAMP 4						
STA. 462+62 TO STA. 485+46						
RAMP 5						
STA. 580+00 TO STA. 613+93						
RAMP 6						
STA. 1558+00 TO STA. 693+63 TO STA. 792+00	34.0	50.0	4,760.0		2.2	21.4
STA. 693+63 TO STA. 792+00	184.0	275.4	13,116.0		12.3	118.0
OMISSION: STA. 717+30 TO STA. 720+67	-6.3	-9.4	-449.0		-0.4	-4.0
RAMP 7						
STA. 703+19 TO STA. 722+55						
RAMP 8						
STA. 872+40 TO STA. 885+00						
MAINLINE						
1255 (NB)						
STA. 1556+00 TO STA. 1557+00 TO STA. 1609+00	118.0	176.4	9,333.3		7.6	78.4
1255 (SB)						
STA. 1557+00 TO STA. 1557+00 TO STA. 1609+00	146.0	218.4	11,555.5		10.1	97.1
TOTAL	653.5	973.7	59,167.3	2,816.7	53.5	456.5

PAVEMENT MARKING SCHEDULE

LOCATION	PAINT PAVEMENT MARKING		SHORT TERM PAVEMENT MARKING LINE - 4"	RAISED REFLECTIVE PAVEMENT MKRS EACH	RAISED REFLECTIVE PAVEMENT MKRS REM EACH
	FOOT	FOOT			
LOCATION #1	LINE - 4"	SKIP-DASH			
RAMP 1					
STA. 1272+55 TO STA. 101+70 TO STA. 114+75	2,910.0	364.0	133	36	36
STA. 114+75 TO 161+40	2,610.0	327.0	119	32	32
STA. 114+75 TO 161+40	9,330.0	1,167.0	425	116	116
RAMP 2					
STA. 479+20 TO STA. 490+00	2,160.0	270.0	98	80	80
STA. 200+00 TO 232+26	6,452.0	807.0	293	228	228
RAMP 3					
STA. 800+00 TO 811+82					
STA. 301+00 TO STA. 315+54					
STA. 152+20 TO STA. 161+75					
RAMP 4					
STA. 400+00 TO STA. 414+16					
RAMP 5					
STA. 500+00 TO STA. 519+40					
RAMP 6					
STA. 600+00 TO STA. 619+42					
ROADWAY "A"					
STA. 699+90 TO STA. 738+77					
ROADWAY "B"					
STA. 800+00 TO STA. 867+04					
LOCATION #2					
RAMP 1					
STA. 148+04 TO STA. 179+64					
RAMP 2					
STA. 212+58 TO STA. 231+00					
RAMP 3					
STA. 1638+00 TO STA. 340+48 TO STA. 366+35	1,600.0		73		
STA. 340+48 TO STA. 366+35	5,174.0		235		
RAMP 4					
STA. 462+62 TO STA. 485+46					
RAMP 5					
STA. 580+00 TO STA. 613+93					
RAMP 6					
STA. 1558+00 TO 1593+70	7,140.0	893.0	328		
STA. 693+63 TO STA. 792+00	19,000.0	2,375.0	864	326	326
OMISSION: STA. 717+30 TO STA. 720+67	-674.0	-85.0	-31		
RAMP 7					
STA. 703+19 TO STA. 722+55					
RAMP 8					
STA. 872+40 TO STA. 885+00					
MAINLINE					
1255 (NB)					
STA. 1556+00 TO STA. 1598+00	8,400.0	2,100.0	382	420	420
1255 (SB)					
STA. 1557+00 TO STA. 1609+00	10,400.0	2,600.0	473	520	520
• ADDITIONAL QUANTITY			3836		
• ADDITIONAL QUANTITY			3000		
• ADDITIONAL QUANTITY	9,590				
TOTAL	94,910	48,386.0	10,228	1758	1758

- ADDITIONAL SHORT TERM PAVEMENT MARKING DUE TO CRACK ROUTING/CRACK FILLING 3836 FEET.
- ADDITIONAL SHORT TERM PAVEMENT MARKING FOR EDGE LINES 3,000 FEET
- ADDITIONAL PAINT PAVEMENT MARKING DUE TO CRACK ROUTING 9,590 FEET

REVISIONS	
NAME	DATE

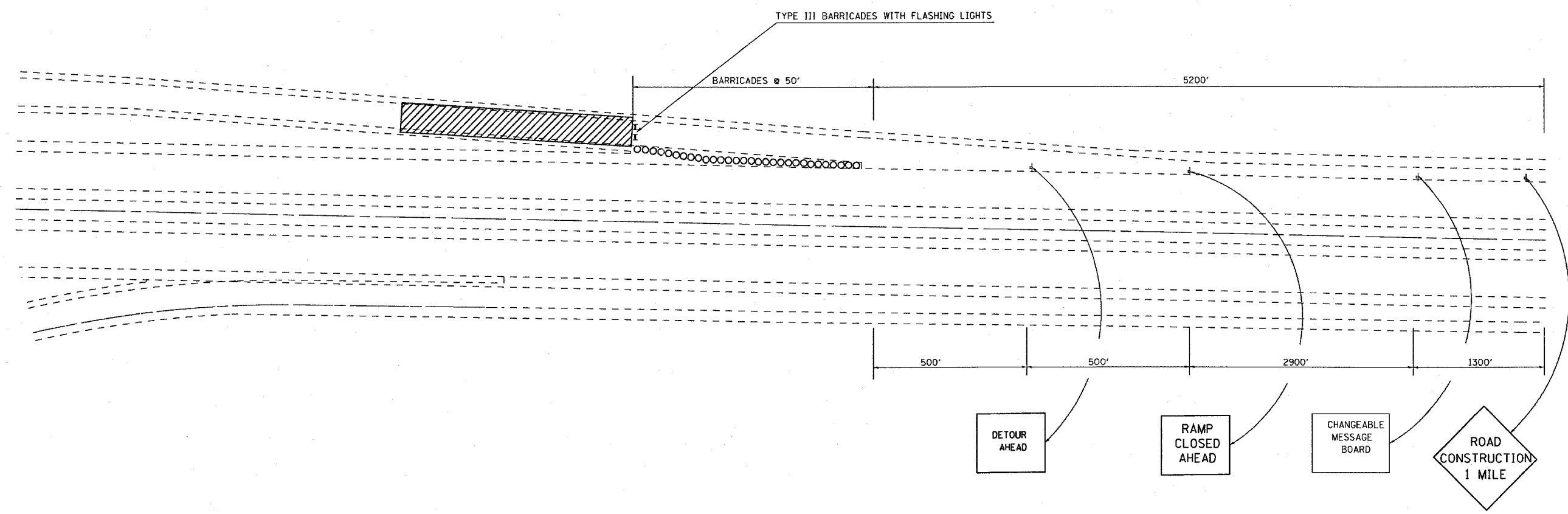
ILLINOIS DEPARTMENT OF TRANSPORTATION
 FULL DEPTH & CLASS A
 PATCHING SCHEDULES
 FAI 255, FAI 55/70
 SECTION (60-7, 60-9)RS &
 60-(6-1,7-1)RS
 MADISON COUNTY
 SCALE: VERT. DATE
 HORIZ. DATE
 DRAWN BY
 CHECKED BY

PLOT DATE: 8/11/2007
 FILE NAME: c:\p\projects\76b15\76b15.dgn
 PLOT SCALE: 1/8" = 1'-0"
 USER NAME: aiford

F.A.I. RTE.	SECTION	COUNTY	TOTAL SHEETS	SHEET NO.
•	••	MADISON	37	19

STA.	TO STA.

FED. ROAD DIST. NO.	ILLINOIS	FED. AID PROJECT
•-255-55/70		
••(60-7, 60-9)RS AND 60-16-1,7-1)RS		



PLOT DATE = 8/11/2007
 FILE NAME = c:\projects\76b15\76b15.dgn
 PLOT SCALE = 1/8" = 1' IN.
 USER NAME = jfr06

REVISIONS	
NAME	DATE

ILLINOIS DEPARTMENT OF TRANSPORTATION
RAMP CLOSURE
MULTILANE, FOR SPEEDS
> 45 MPH
 FAI 255, FAI 55/70
 SECTION (60-7, 60-9)RS &
 60-16-1,7-1)RS
 MADISON COUNTY
 SCALE: VERT. _____
 DATE: _____ HORIZ. _____
 DRAWN BY _____
 CHECKED BY _____

CONTRACT NO. 76B15			
F.A.I. RTE.	SECTION	COUNTY	TOTAL SHEETS
*	**	MADISON	37 20
STA.		TO STA.	
FED. ROAD DIST. NO.	ILLINOIS	FED. AID PROJECT	
•-255-55/70			
••(60-7, 60-9)RS AND 60-16-1,7-1)RS			

TO BE SUPPLIED BY CONTRACTOR:

①

②

③

ON TYPE 3 BARRICADES - 2 MINIMUM AT EACH LOCATION

TO BE SUPPLIED BY IDOT:

④

⑤

⑥

⑦

⑧

⑨

⑩

⑪

⑫

⑬

⑭

⑮

⑯

⑰

⑱

DETOUR NOTES

- DETOUR SIGNS REQUIRED WILL BE SUPPLIED TO THE CONTRACTOR BY IDOT.
- THE CONTRACTOR SHALL FURNISH THE POSTS AND ERECT SIGNS AT THE LOCATIONS SHOWN ON THIS SHEET, AS DIRECTED BY THE R.E./R.T.. THE POSTS SHALL REMAIN THE PROPERTY OF THE CONTRACTOR.
- THE CONTRACTOR SHALL GIVE ILLINOIS DEPARTMENT OF TRANSPORTATION, BUREAU OF OPERATIONS TWO WEEKS NOTICE FOR SIGNS. THE CONTRACTOR SHALL PICK UP THE SIGNS AT THE T.M. BUILDING IN FAIRVIEW HEIGHTS, AND RETURN THEM UPON COMPLETION OF THE CONTRACT. CONTACT JEAN SLAPE 346-3289.
- THE ABOVE NOTED WORK SHALL BE PAID FOR AT THE CONTRACT UNIT PRICE, LUMP SUM, FOR DETOUR SIGNING AND NO OTHER COMPENSATION WILL BE ALLOWED.
- SIGN SPACING WILL BE 500' TO FIT FIELD CONDITIONS.
- THE HEIGHT TO THE BOTTOM OF THE LOWEST SIGN SHALL NOT BE LESS THAN 6'.
- CONTRACTOR SHALL FURNISH ADVANCE WARNING SIGNS, ROAD CLOSURE SIGNS, MESSAGE BOARD AND TYPE 3 BARRICADES.
- ALL ADVANCE WARNING SIGNS SHALL BE 48" FLOURESCENT ORANGE WITH FLASHING LIGHTS.

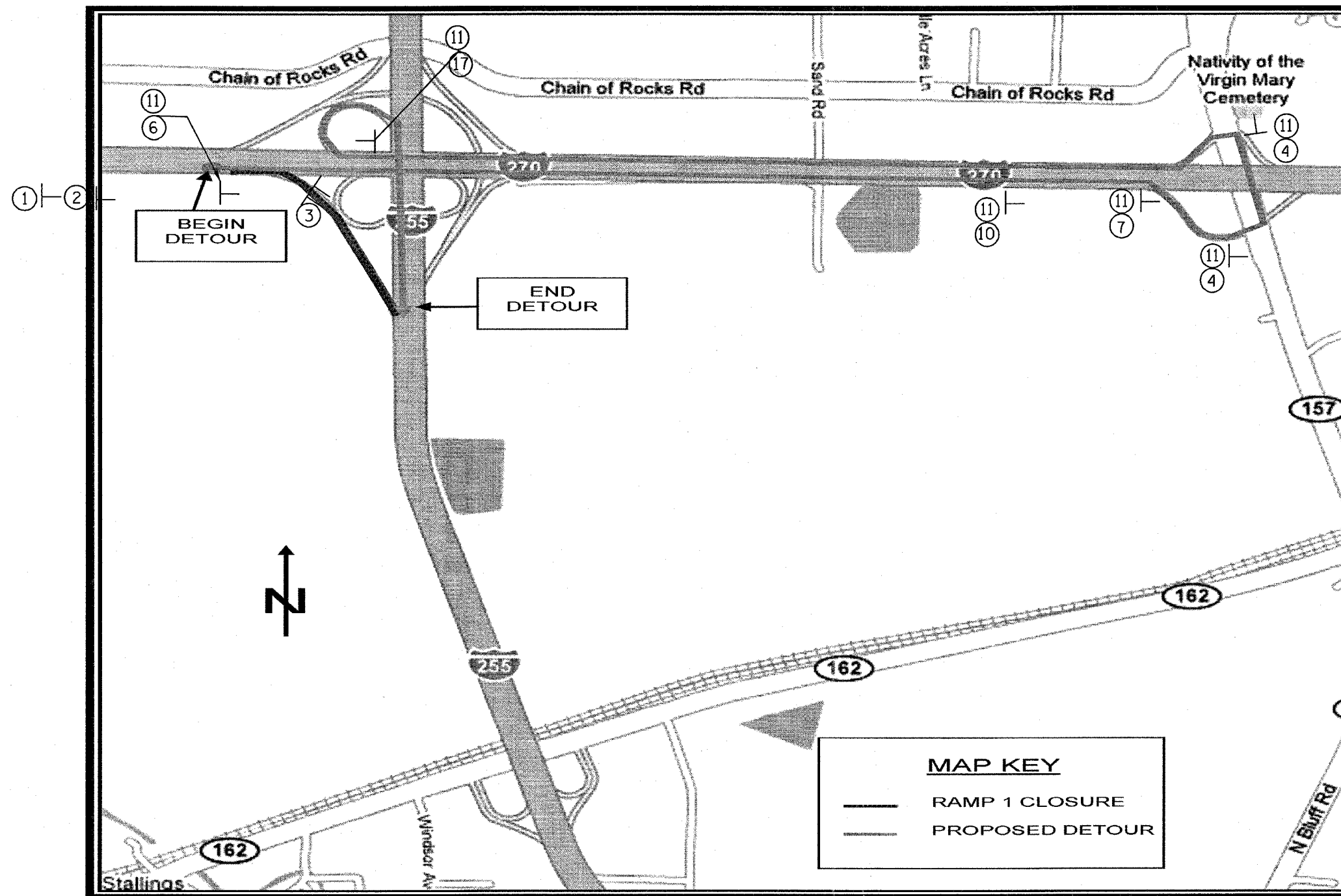
PLOT DATE • 5/1/2007
 PLOT SCALE • 1/8" = 1'-0"
 REFERENCE • BREFS

REVISIONS	
NAME	DATE

ILLINOIS DEPARTMENT OF TRANSPORTATION
DETOUR SIGNS
 FAI 255, FAI 55/70
 SECTION (60-7, 60-9)RS &
 60-16-1,7-1)RS
 MADISON COUNTY
 SCALE: VERT. DRAWN BY
 DATE HORIZ. CHECKED BY

CONTRACT NO. 76B15

F.A.I. RTE.	SECTION	COUNTY	TOTAL SHEETS	SHEET NO.
•	••	MADISON	37	21
STA.		TO STA.		
FED. ROAD DIST. NO.		ILLINOIS FED. AID PROJECT		
•-255-55/70		••(60-7, 60-9)RS AND 60-16-1,7-1)RS		



I-255/I-270 RAMP 1 DETOUR

MAP KEY

- RAMP 1 CLOSURE
- - - PROPOSED DETOUR

PLT DATE: 8/11/2007
 FILE NAME: C:\Users\alford\Documents\76B15\76B15.dgn
 PLT SCALE: 1/8" = 1'-0"
 USER NAME: alford

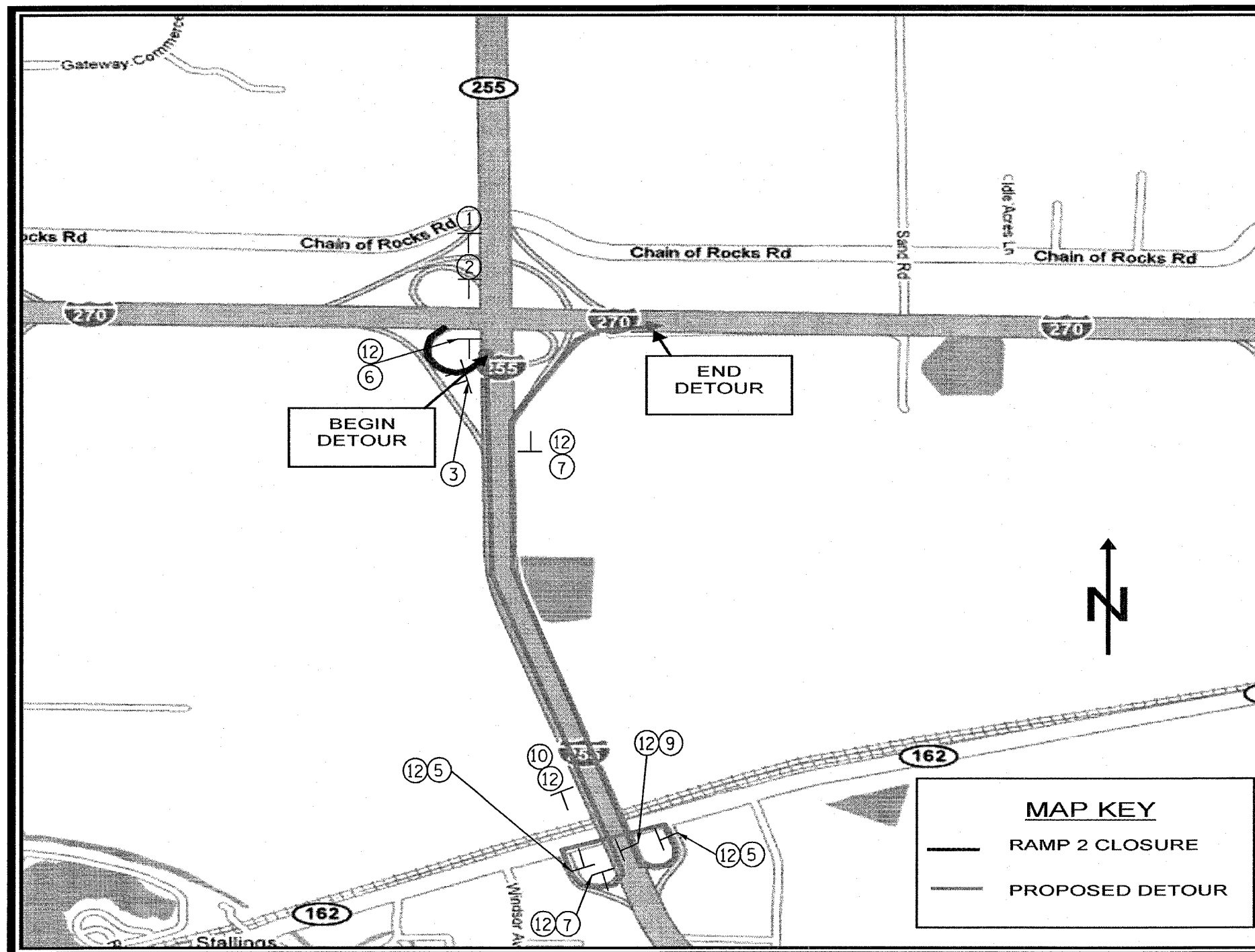
REVISIONS		ILLINOIS DEPARTMENT OF TRANSPORTATION
NAME	DATE	
		DETOUR SHEET FAI 255, FAI 55/70 SECTION (60-7, 60-9)RS & 60-16-1,7-1)RS MADISON COUNTY
SCALE:	VERT. DATE	DRAWN BY
HORIZ.		CHECKED BY

CONTRACT NO. 76B15

F.A.I. RTE.	SECTION	COUNTY	TOTAL SHEETS	SHEET NO.
*	**	MADISON	37	22

STA.	TO STA.
FED. ROAD DIST. NO.	ILLINOIS FED. AID PROJECT

•-255-55/70
 ••(60-7, 60-9)RS AND 60-(6-1,7-1)RS



I-255/I-270 RAMP 2 DETOUR

PLOT DATE: 8/11/2007
 PLOT NAME: \\snp\pers\m\68387\cad\p1\68387.dgn
 PLOT SCALE: 1" = 100'
 USER NAME: alfendb

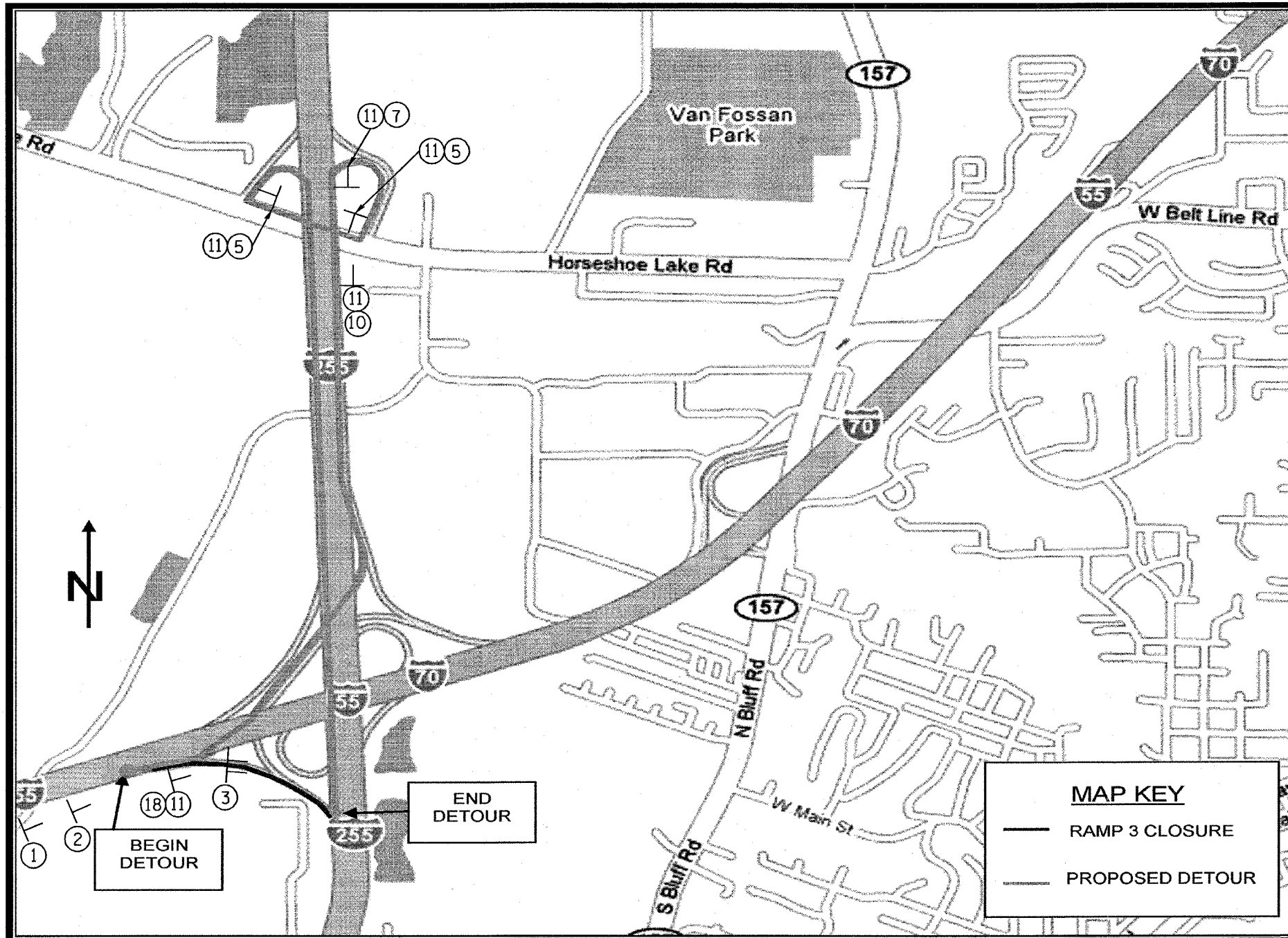
REVISIONS	
NAME	DATE

ILLINOIS DEPARTMENT OF TRANSPORTATION

DETOUR SHEET
 FAI 255, FAI 55/70
 SECTION (60-7, 60-9)RS &
 60-(6-1,7-1)RS
 MADISON COUNTY

SCALE: VERT. DRAWN BY
 HORIZ. CHECKED BY
 DATE

F.A.I. RTE.	SECTION	COUNTY	TOTAL SHEETS	SHEET NO.
•	**	MADISON	37	25
STA.		TO STA.		
FEB. ROAD DIST. NO.		ILLINOIS FED. AID PROJECT		
•-255-55/70				
••(60-7, 60-9)RS AND 60-(6-1,7-1)RS				



I-255/I-55/70 RAMP 3 DETOUR

PLOT DATE • 8/11/2007
 FILE NAME • c:\projects\76b15\76b15.dwg
 USER NAME • alfranco

REVISIONS		DATE	ILLINOIS DEPARTMENT OF TRANSPORTATION
NAME			

DETOUR SHEET
 FAI 255, FAI 55/70
 SECTION (60-7, 60-9)RS &
 60-(6-1,7-1)RS
 MADISON COUNTY
 SCALE: VERT. DRAWN BY
 HORIZ. CHECKED BY
 DATE

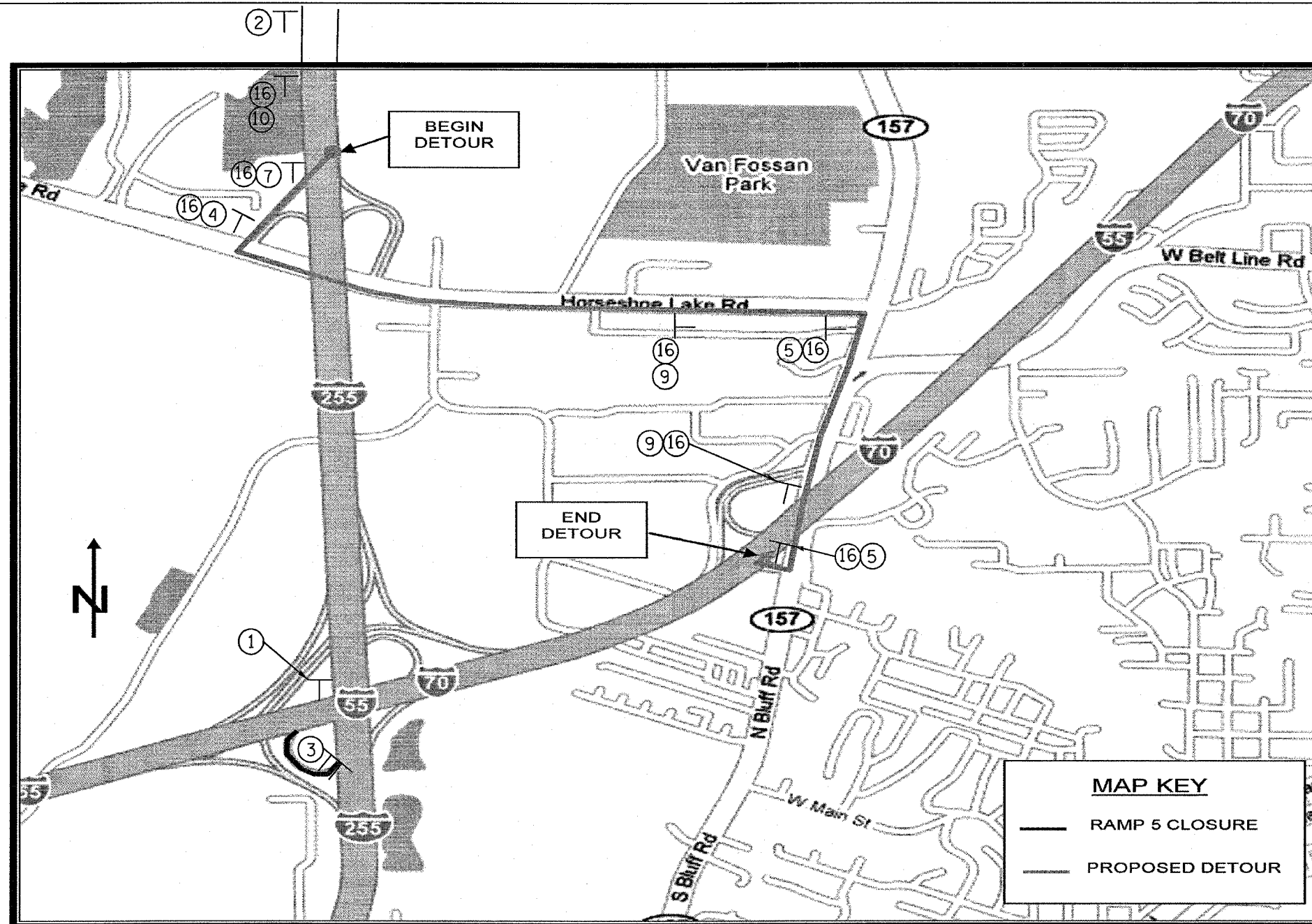
CONTRACT NO. 76B15

F.A.I. RTE.	SECTION	COUNTY	TOTAL SHEETS	SHEET NO.
*	**	MADISON	37	26

STA. TO STA.

FED. ROAD DIST. NO. ILLINOIS FED. AID PROJECT

*-255-55/70
 **160-7, 60-9)RS AND 60-(16-1,7-1)RS



I-255/I-55/70 RAMP 5 DETOUR

PLOT DATE = 8/11/2007
 FILE NAME = c:\projects\76b15\76b15.dwg
 PLOT SCALE = 1/8" = 1'-0"
 USER NAME = jforbes

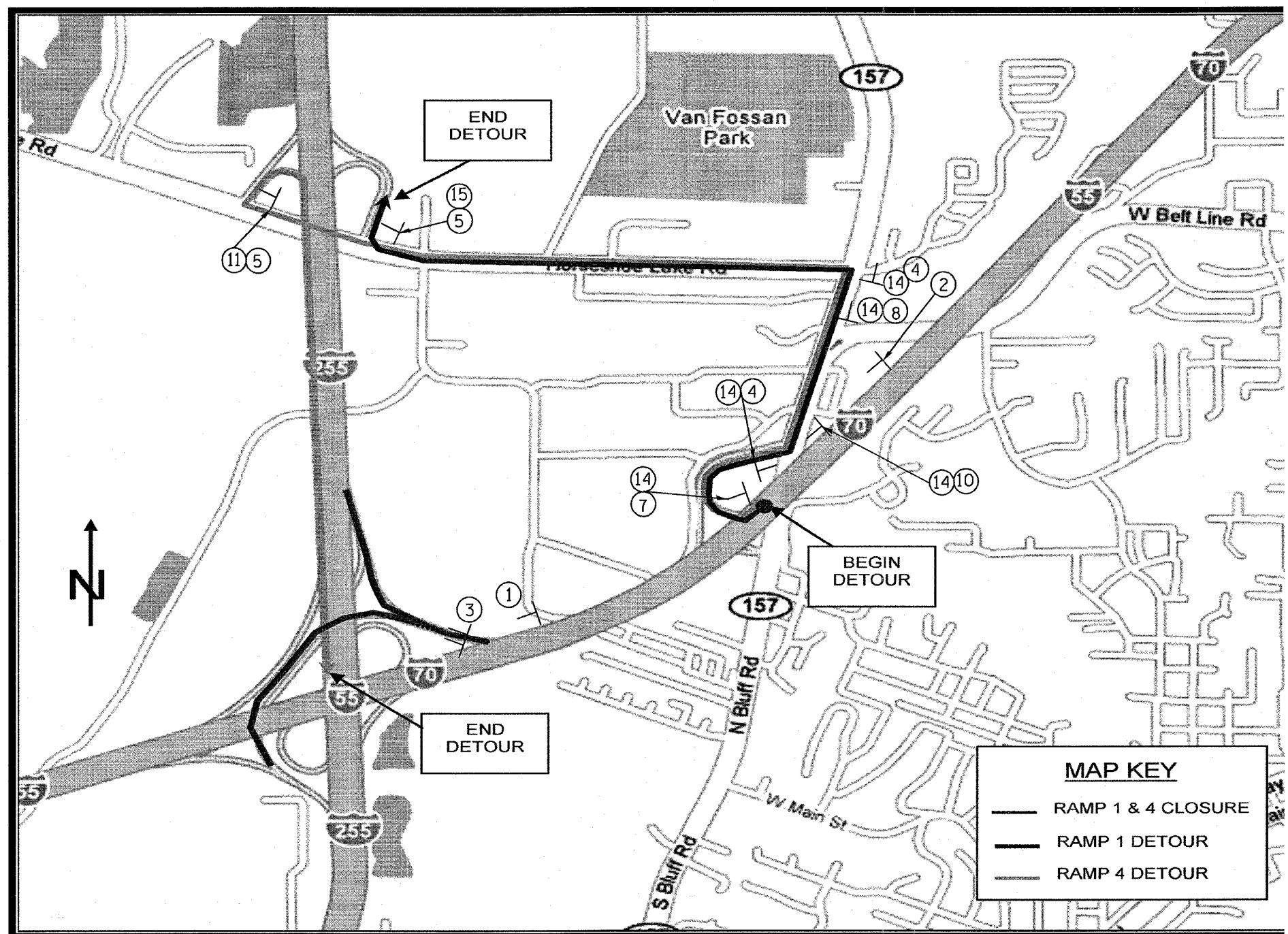
REVISIONS	
NAME	DATE

ILLINOIS DEPARTMENT OF TRANSPORTATION

DETOUR SHEET
 FAI 255, FAI 55/70
 SECTION 160-7, 60-9)RS &
 60-(16-1,7-1)RS
 MADISON COUNTY

SCALE: VERT. DRAWN BY
 HORIZ. CHECKED BY
 DATE

CONTRACT NO. 76B15				
F.A.I. RTE.	SECTION	COUNTY	TOTAL SHEETS	SHEET NO.
*	**	MADISON	37	27
STA.		TO STA.		
FED. ROAD DIST. NO.		ILLINOIS FED. AID PROJECT		
*-255-55/70				
**-(60-7, 60-9)RS AND 60-(6-1,7-1)RS				



MAP KEY	
—	RAMP 1 & 4 CLOSURE
—	RAMP 1 DETOUR
—	RAMP 4 DETOUR

I-255/I-55/70 RAMP 1 & 4 DETOUR

PLOT DATE: 8/11/2007
 FILE NAME: c:\projects\76b15\76b15.dwg
 PLOT SCALE: 1/8" = 1' IN.
 USER NAME: s111111

REVISIONS		ILLINOIS DEPARTMENT OF TRANSPORTATION
NAME	DATE	
		DETOUR SHEET FAI 255, FAI 55/70 SECTION (60-7, 60-9)RS & 60-(6-1,7-1)RS MADISON COUNTY
SCALE:	VERT. DATE	HORIZ. DATE
		DRAWN BY
		CHECKED BY

F.A.I. RTE.	SECTION	COUNTY	TOTAL SHEETS	SHEET NO.
*	**	MADISON	37	30

STA. TO STA.

FED. ROAD DIST. NO. ILLINOIS FED. AID PROJECT

*-255-55/70
 **-(60-7, 60-9)RS AND 60-16-1,7-1)RS

SCHEDULE OF QUANTITIES

CODE NO	ITEM	UNIT	TOTAL QUANTITIES 1000-2A
	POLYMERIZED BITUMINOUS MATERIALS (PRIME COAT)	TON	21
	AGGREGATE (PRIME COAT)	TON	914
	CONSTRUCTING TEST STRIP	EACH	2
	HOT-MIX ASPHALT SURFACE REMOVAL - BUTT JOINT	SO YD	183
	PORTLAND CEMENT CONCRETE SURFACE REMOVAL - BUTT JOINT	SO YD	213
	TEMPORARY RAMP	SO YD	155
	HOT-MIX ASPHALT SURFACE REMOVAL, 2"	SO YD	56878
	PAVED SHOULDER REMOVAL	SO YD	491
	PAVEMENT PATCHING, TYPE II, 10 INCH	SO YD	131
	SAW CUTS	FOOT	506
	HOT-MIX ASPHALT SHOULDERS	TON	181
	ENGINEER'S FIELD OFFICE, TYPE A	EACH	6
	MOBILIZATION	L SUM	0.4
	TRAFFIC CONTROL AND PROTECTION, STANDARD 701411	EACH	5
	TRAFFIC CONTROL AND PROTECTION, STANDARD 701406	L SUM	0.4

SCHEDULE OF QUANTITIES

CODE NO	ITEM	UNIT	TOTAL QUANTITIES 1000-2A
	TRAFFIC CONTROL AND PROTECTION, STANDARD 701446	L SUM	0.4
	TRAFFIC CONTROL AND PROTECTION (SPECIAL)	EACH	5
	CHANGEABLE MESSAGE SIGN	CAL MO	24
	SHORT-TERM PAVEMENT MARKING	FOOT	4319
	TEMPORARY PAVEMENT MARKING - LINE 4"	FOOT	42437
	WORK ZONE PAVEMENT MARKING REMOVAL	SO FT	1440
	THERMOPLASTIC PAVEMENT MARKING - LINE 4"	FOOT	32077
	THERMOPLASTIC PAVEMENT MARKING - LINE 8"	FOOT	2770
	PREFORMED PLASTIC PAVEMENT MARKING, TYPE B - INLAID - LINE 4"	FOOT	7590
	RAISED REFLECTIVE PAVEMENT MARKER	EACH	772
	RAISED REFLECTIVE PAVEMENT MARKER REMOVAL	EACH	772
	DETECTOR LOOP REPLACEMENT	FOOT	168
	MATERIAL TRANSFER DEVICE	TON	6360
	POLYMERIZED HOT-MIX ASPHALT SURFACE COURSE, STONE MATRIX ASPHALT, N80	TON	6360
	PARTIAL DEPTH PATCHING	TON	940
	PARTIAL DEPTH REMOVAL 2"	SO YD	8388

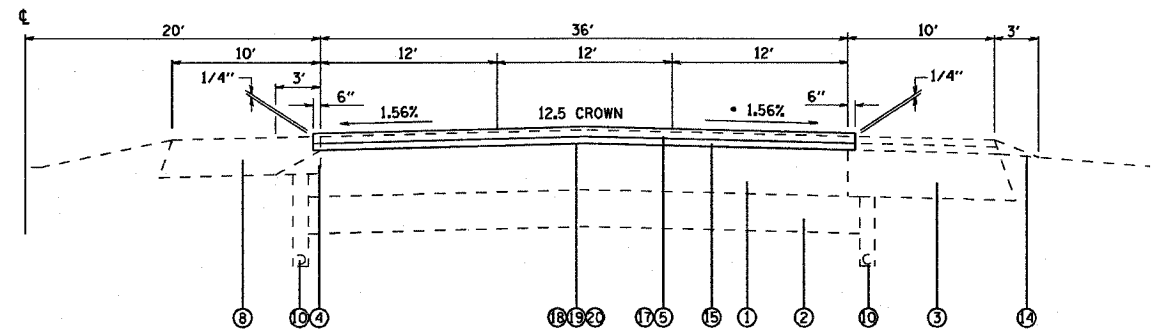
PLOT DATE: 5/11/2007
 FILE NAME: c:\projects\0808307\0808307.dgn
 USER: g10000 / IN.
 USER NAME: g10000

REVISIONS	
NAME	DATE

ILLINOIS DEPARTMENT OF TRANSPORTATION
 SCHEDULE OF QUANTITIES
 LOCATION #3
 FAI 255, FAI 55/70
 SECTION (60-7, 60-9)RS &
 60-16-1,7-1)RS
 MADISON COUNTY

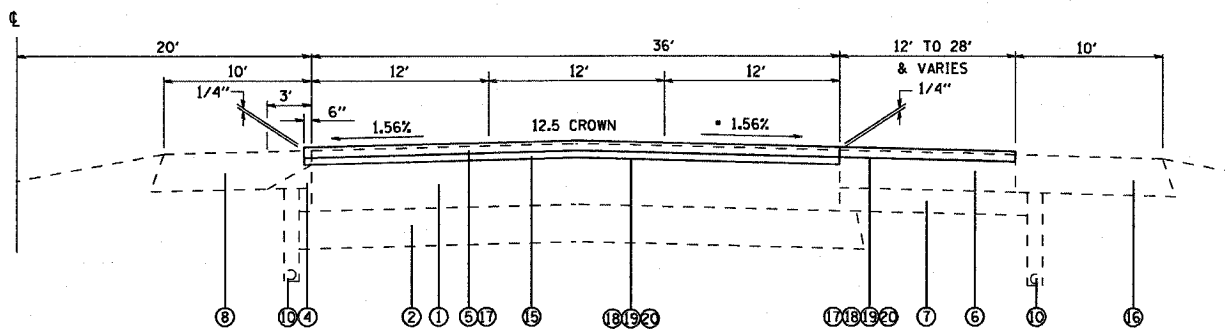
SCALE: VERT. DRAWN BY
 HORIZ. CHECKED BY
 DATE

F.A.I. RTE.	SECTION	COUNTY	TOTAL SHEETS	SHEET NO.
*	**	MADISON	37	31
STA.		TO STA.		
FED. ROAD DIST. NO.	ILLINOIS	FED. AID PROJECT		
**255-55/70				
**60-7, 60-9IRS AND 60-16-1,7-1RS				



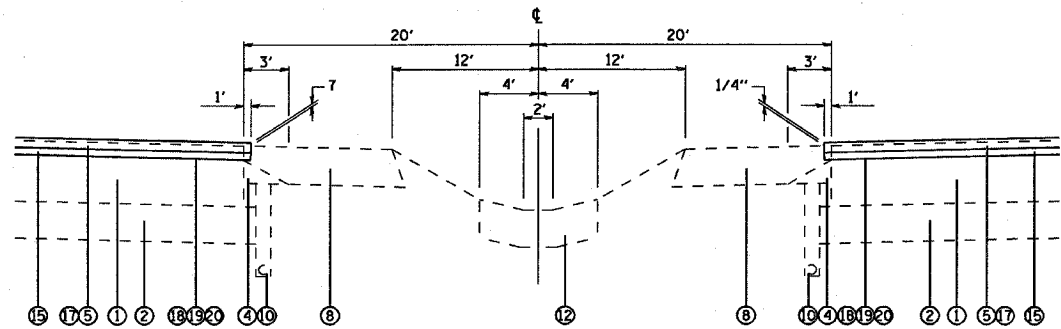
TYPICAL HALF SECTION
378+13 TO 513+06 WB • 2% SLOPE IN SUPERELEVATED AREAS (TYP)

NOTE: EXISTING RESURFACING SHALL BE REMOVED, DEPTH = 2"



HALF SECTION WITH AUXILIARY LANE OR RAMP TAPER
378+13 TO 513+06 WB • 2% SLOPE IN SUPERELEVATED AREAS (TYP)

NOTE: ALL EXISTING RESURFACING SHALL BE REMOVED, DEPTH = 2"



MEDIAN SECTION WITH PAVED DITCH
499+51 TO 513+06

NOTE: EXISTING RESURFACING SHALL BE REMOVED, DEPTH = 2"

LEGEND

- ① EXIST. P.C.C. PAVEMENT WITH PAVEMENT FABRIC
- ② EXIST. COMPACTED DEPTH SUB-BASE GRANULAR MATERIAL
- ③ EXIST. GRAVEL OR CRUSHED STONE SHOULDER, TYPE "A"
- ④ EXIST. GRAVEL OR CRUSHED STONE SHOULDER, TYPE "B"
- ⑤ EXIST. BITUMINOUS CONCRETE SURFACE COURSE, MIX E, CLASS 1, 38
- ⑥ EXIST. REINFORCED JOINTED P.C.C. PAVEMENT
- ⑦ EXIST. STABILIZED SUBBASE
- ⑧ EXIST. BITUMINOUS SHOULDERS
- ⑨ EXIST. PIPE CULVERT, TYPE 2, R.C.C.P.
- ⑩ EXIST. UNDERDRAIN
- ⑪ EXIST. PIPE DRAIN
- ⑫ EXIST. P.C.C. PAVED DITCH
- ⑬ EXIST. MEDIAN INLET, STANDARD 2240
- ⑭ EXIST. AGGREGATE SHOULDER, TYPE "B"
- ⑮ EXIST. LEVELING BINDER (MACHINE METHOD), 1.75"
- ⑯ EXIST. BITUMINOUS SHOULDERS
- ⑰ PROPOSED BITUMINOUS CONCRETE SURFACE COURSE, PSMA 2"
- ⑱ PROPOSED BITUMINOUS MATERIALS (PRIME COAT)
- ⑲ PROPOSED AGGREGATE (PRIME COAT)
- ⑳ PROPOSED MILLING 2"

NOT TO SCALE

REVISIONS		ILLINOIS DEPARTMENT OF TRANSPORTATION TYPICAL SECTIONS LOCATION #3 FAI 255, FAI 55/70 SECTION (60-7, 60-9)RS & 60-(6-1,7-1)RS MADISON COUNTY
NAME	DATE	

SCALE: VERT. _____
HORIZ. _____
DATE _____ DRAWN BY _____
CHECKED BY _____

PLOT DATE: 5/11/2007
 FILE NAME: c:\pcc\project\8083078\c-od\pcc\08307a.dgn
 PLOT SCALE: 500000
 USER NAME: aforab

F.A.I. RTE.	SECTION	COUNTY	TOTAL SHEETS	SHEET NO.
*	**	MADISON	37	33
STA.		TO STA.		
FED. ROAD DIST. NO.		ILLINOIS FED. AID PROJECT		
*255-55/70				
**160-7, 60-9IRS AND 60-16-1,7-1RS				

HMA SHOULDERS SCHEDULE

HMA SHOULDERS SCHEDULE-									
LOCATION	FROM	TO	LT OR RT	PLAN SOFT	PLAN SOYD	PRIME COAT BITUMINOUS (TON)	PRIME COAT AGGREGATE (TON)	HMA SHOULDER (TON)	REMARKS
BLACK LANE	4+15	6+87	LT	2176.0	241.8	0.1	3.3	16.9	TAPER FROM 2" TO 1/2 INCH ON EXISTING SHOULDER
BLACK LANE	4+15	6+87	RT	1088.0	120.9	0.0	1.6	8.5	TAPER FROM 2" TO 1/2 INCH ON EXISTING SHOULDER
BLACK LANE	6+87	7+17	LT	90.0	10.0	0.0	0.1	0.7	TAPER FROM 2" TO 1/2 INCH ON EXISTING SHOULDER
BLACK LANE	6+87	7+17	RT	150.0	16.7	0.0	0.2	1.2	TAPER FROM 2" TO 1/2 INCH ON EXISTING SHOULDER
BLACK LANE	9+62	10+00	LT	114.0	12.7	0.0	0.2	0.9	TAPER FROM 2" TO 1/2 INCH ON EXISTING SHOULDER
BLACK LANE	9+62	10+00	RT	190.0	21.1	0.0	0.3	1.5	TAPER FROM 2" TO 1/2 INCH ON EXISTING SHOULDER
BLACK LANE	10+00	21+46	LT	4584.0	590.3	0.2	6.9	41.3	TAPER FROM 2" TO 1/2 INCH ON EXISTING SHOULDER
BLACK LANE	10+00	21+46	RT	9168.0	1018.7	0.3	13.8	71.3	TAPER FROM 2" TO 1/2 INCH ON EXISTING SHOULDER
MAINLINE	478+50	475+80	RT	4320.0	480.0	0.2	6.5	33.6	FULL THICKNESS IN GORE AREA BETWEEN RAMP AND MAINLINE
MAINLINE	455+01	454+76	RT	100.0	11.1	0.0	0.2	5.0	FULL THICKNESS REPAIR RIGHT SHOULDER UNDER I-255 BRIDGE
TOTALS				21980.0	2523.3	0.8	33.0	180.8	

HMA RESURFACING SCHEDULE

HMA SURFACE RESURFACING SCHEDULE-SURFACE COURSE									
LOCATION	FROM	TO	LANES	PLAN SOFT	PLAN SOYD	PRIME COAT BITUMINOUS (TON)	PRIME COAT AGGREGATE (TON)	HMA SURFACE COURSE SMA 2" (TON)	REMARKS
378+13	513+06		1 & 2	323832	35981	11.30	485.70	4030	WEST BOUND LANES 1 AND 2
378+13	494+73		3	139920	15547	4.90	209.90	1741	WEST BOUND LANE 3
390+04	378+73		RAMP	13566	1507	0.50	20.30	169	RAMP WB 55/70 FROM NB BLACK LANE ENTRANCE
494+73	498+84		RAMP	6636	737	0.20	10.00	83	RAMP WB 55/70 FROM ILL 157 ENTRANCE
510+45	513+31		RAMP	4176	464	0.10	6.30	52	RAMP WB 55/70 TO ILL 157 EXIT
4+15	7+17		RAMP	4832	537	0.20	7.20	60	ENTRANCE RAMP NB BLACK LANE TO WEST BOUND I-55/70
7+17	9+62		RAMP	0	0	0.00	0.00	0	RESURFACING OMISSION BRIDGE OVER I-55/70
9+62	21+46		RAMP	18944	2105	0.70	28.40	226	ENTRANCE RAMP NB BLACK LANE TO WEST BOUND I-55/70
TOTALS				511906	56878	17.80	767.90	6360	

TEMPORARY RAMP SCHEDULES

TEMPORARY RAMP SCHEDULES						
LOCATION	FROM	TO	WEST BOUND	LOCATION	PLAN SO. YD.	REMARKS
378+13				MAIN LINE	26.7	BEGINNING OF PROJECT
433+57				RAMP	17.8	ON RAMP FROM I-255 SOUTH BOUND
459+58				RAMP	11.9	ON RAMP FROM I-255 NORTH BOUND
476+37				RAMP	11.9	OFF RAMP TO I-255
498+84				RAMP	11.9	ON RAMP FROM 157
510+45				RAMP	11.9	OFF RAMP TO 157
513+06				MAIN LINE	26.7	END OF PROJECT
4+15		WEST BOUND	BLACK LANE RAMP		11.9	AT NEW PAVEMENT 415' N CANTEEN CRK BR
7+17		WEST BOUND	BLACK LANE RAMP		11.9	AT S EDGE BR # 060- I-55/70
9+62		WEST BOUND	BLACK LANE RAMP		11.9	AT N EDGE BR # 060- I-55/70
TOTALS					154.5	

NOTE STATION 22+96 BLACK LANE = 388+54 MAIN LINE I-55/70

PARTIAL DEPTH PATCH SCHEDULE

LOCATION	FROM	TO	LANES	PLAN SOFT	PLAN SOYD	PRIME COAT BITUMINOUS (TON)	PRIME COAT AGGREGATE (TON)	HMA SURFACE SMA 2" (TON)	REMARKS
484+79	476+37		RAMP	11537	1282	0.40	17.30	144	RAMP WB 55/70 TO I-255 EXIT
459+58	447+66		RAMP	15670	1741	0.50	23.50	195	RAMP WB 55/70 FROM I-255 ENTRANCE
433+57	400+65		RAMP	48285	5365	1.70	72.40	601	RAMP WB 55/70 FROM I-255 SB 2 LANE ENTRANCE
TOTALS				75492	8388	3	113	940	

PAVEMENT MARKING SCHEDULE

LOCATION	PREFORM PLAS	THERMOPLASTIC	THERMOPLASTIC	THERMOPLASTIC	SHORT TERM	WORK ZONE	TEMPORAY	RAISED	RAISED
	PAVT MARKING	MARKING	MARKING	MARKING	PAVEMENT MK	REMOVAL	PAVT MARKING	REFLECTIVE	REFLECTIVE
	TYPE B INLAID FOOT	LINE - 4" WHITE FOOT	LINE - 4" YELLOW FOOT	LINE - 8" WHITE FOOT	PAVEMENT MK SOFT	REMOVAL	(1) APPL) FOOT	PAVT MARKER REMOVAL	PAVT MARKER
WB CANTEEN CRK TO ILL 157 LANE 1 & 2	3380	0	13500		1892.0	630.7	16880	338	338
WB CANTEEN CRK TO ILL 157 LANE 3	3380	7369			1646.8	548.9	10749	292	292
RAMP WB 55/70 TO ILL 157 EXIT	160	295		260	75.8	25.3	715	15	15
RAMP WB 55/70 FROM ILL 157 ENTRANCE	40	411		426	32.4	10.8	877	3	3
RAMP WB 55/70 TO I-255 EXIT	0	842	210	692	42.1	14.0	1744	18	18
RAMP WB 55/70 FROM I-255 NB ENTRANCE	100	1591		466	103.6	34.5	2157	10	10
RAMP WB 55/70 FROM I-255 SB 2LANE ENTRANCE	420	3292		748	299.7	99.9	4460	90	90
RAMP WB 55/70 FROM NB BLACK LANE ENTRANCE	60	1131	61	178	71.7	23.9	1430	7	7
RAMP NB BLACK LANE ENTRANCE CRK	50	403			36.1	12.0	453		
FROM CANTEEN CREEK BRIDGE TO END OF OLD CONC		1486	1486		118.9	39.6	2912		
ON BLANE LANE ENTRANCE RAMP									
TOTALS	7590	16820	15257	2770	4319.1	1439.7	42437	772	772
		4" TP TOTAL =	32077						

REVISIONS		ILLINOIS DEPARTMENT OF TRANSPORTATION SCHEDULES LOCATION #3 FAI 255, FAI 55/70 SECTION (60-7, 60-9IRS & 60-16-1,7-1RS MADISON COUNTY
NAME	DATE	
		SCALE: VERT. DATE HORIZ. DRAWN BY CHECKED BY

PLOT DATE: 5/11/2007
 PLOT SCALE: 1"=500.00'
 PLOT USER: afford

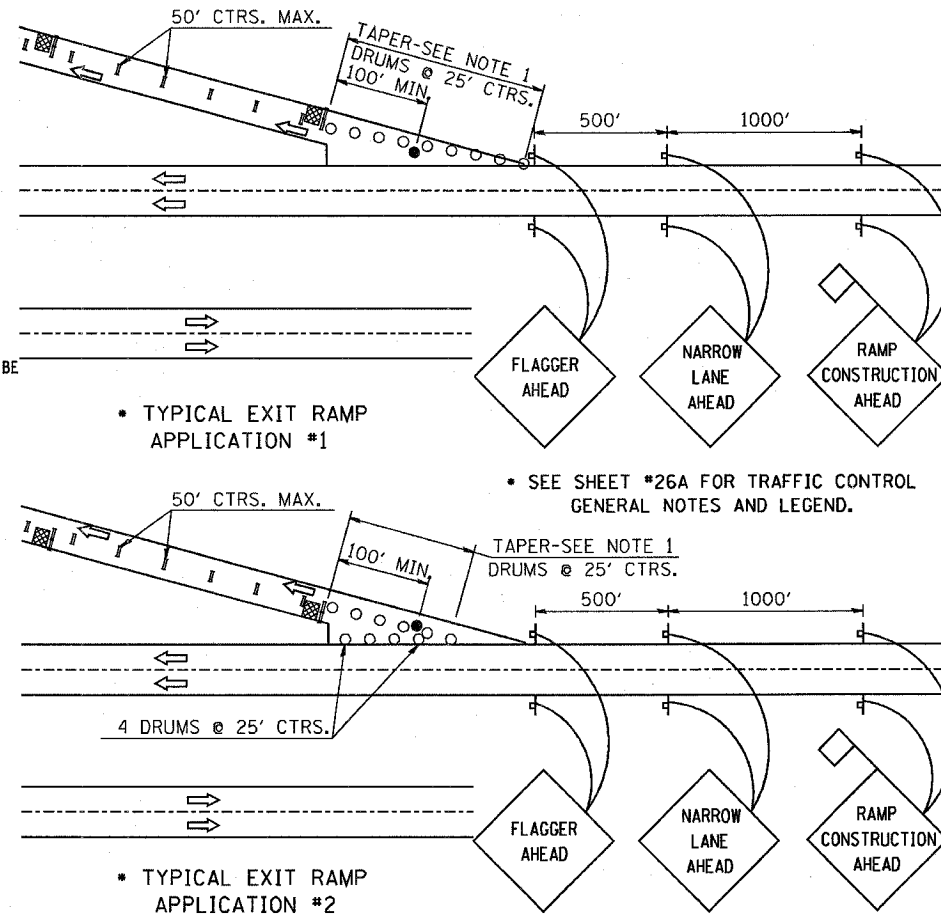
F.A.I. RTE.	SECTION	COUNTY	TOTAL SHEETS	SHEET NO.
•	**	MADISON	37	34

STA.	TO STA.
FED. ROAD DIST. NO.	ILLINOIS FED. AID PROJECT

•-255-55/70
 ••(60-7, 60-9)RS AND 60-16-1,7-1)RS

STAGE CONSTRUCTION AND TRAFFIC CONTROL NOTES

1. TRAFFIC CONTROL & PROTECTION, (SPECIAL) WILL BE USED FOR KEEPING RAMPS OPEN TO TRAFFIC WHILE PATCHING ON RAMPS, AND FOR SHOULDER REPAIR STA. 478+50 TO STA. 475+80.
2. TRAFFIC CONTROL & PROTECTION, STANDARD 701406 WILL BE IN PLACE DURING ALL INSTALLATIONS. IF CONTRACTOR CHOOSES TO CONDUCT NIGHT OPERATIONS, HE SHALL USE STANDARD 701401 AT NO EXTRA COST.
3. TRAFFIC CONTROL & PROTECTION, STD. 701411 PAYS FOR RAMP ACCESS AS AN EACH ITEM. EACH RAMP WILL BE PAID FOR ONCE AND NO OTHER COMPENSATION WILL BE GIVEN.
4. THE PREFERRED SEQUENCE OF CONSTRUCTION FOR FAI-70 WILL BE AS FOLLOWS: FULL DEPTH SHOULDER REPAIR STA. 478+50 TO STA. 475+80 SURFACE REMOVAL, PATCH, AND RESURFACE.
5. FOUR CHANGEABLE MESSAGE SIGNS SHALL BE REQUIRED FOR THIS PROJECT. THESE SIGNS WILL BE PLACED AS DIRECTED BY THE ENGINEER, AND MAY REQUIRE RELOCATION THROUGHOUT THE COURSE OF THE PROJECT. THESE SIGNS WILL BE PAID AT THE CONTRACT UNIT PRICE PER CALENDAR MONTH FOR CHANGEABLE MESSAGE SIGNS WHICH PRICE SHALL INCLUDE RELOCATION OF THE SIGNS AS NECESSARY. MESSAGE BOARDS SHALL BE PACED 2 WEEKS PRIOR TO BEGINNING OF WORK.
6. ALL TRAFFIC CONTROL ON THIS PROJECT SHALL BE PAID FOR AS TRAFFIC CONTROL & PROTECTION (SPECIAL), TRAFFIC CONTROL & PROTECTION, STD. 701411, TRAFFIC CONTROL & PROTECTION, STD. 701401, TRAFFIC CONTROL & PROTECTION, STD. 701406 OR CHANGEABLE MESSAGE SIGN AND NO OTHER COMPENSATION WILL BE PERMITTED.
7. CONTRACTOR SHALL FOLLOW LANE CLOSURE RESTRICTIONS FOR PEAK HOURS AT OUTLINED IN SPECIAL PROVISIONS.



PLT DATE = 8/1/2007
 PLT SCALE = 1/8" = 1'-0"
 USER NAME = aifordb

REVISIONS	
NAME	DATE

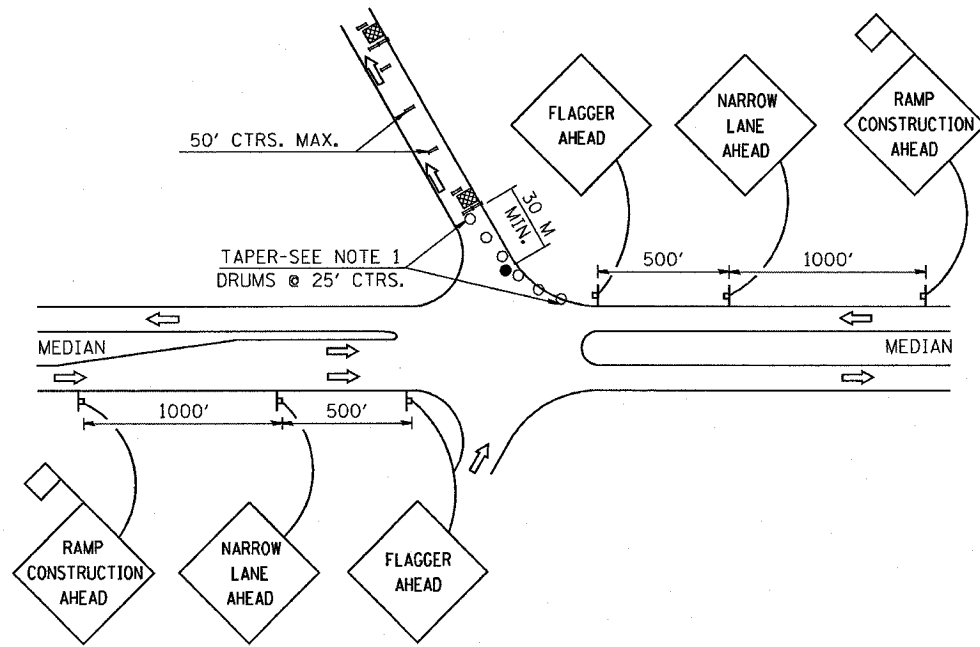
ILLINOIS DEPARTMENT OF TRANSPORTATION

TRAFFIC CONTROL
 FAI 255, FAI 55/70
 SECTION (60-7, 60-9)RS &
 60-16-1,7-1)RS
 MADISON COUNTY

SCALE: VERT. _____
 HORIZ. _____
 DATE _____

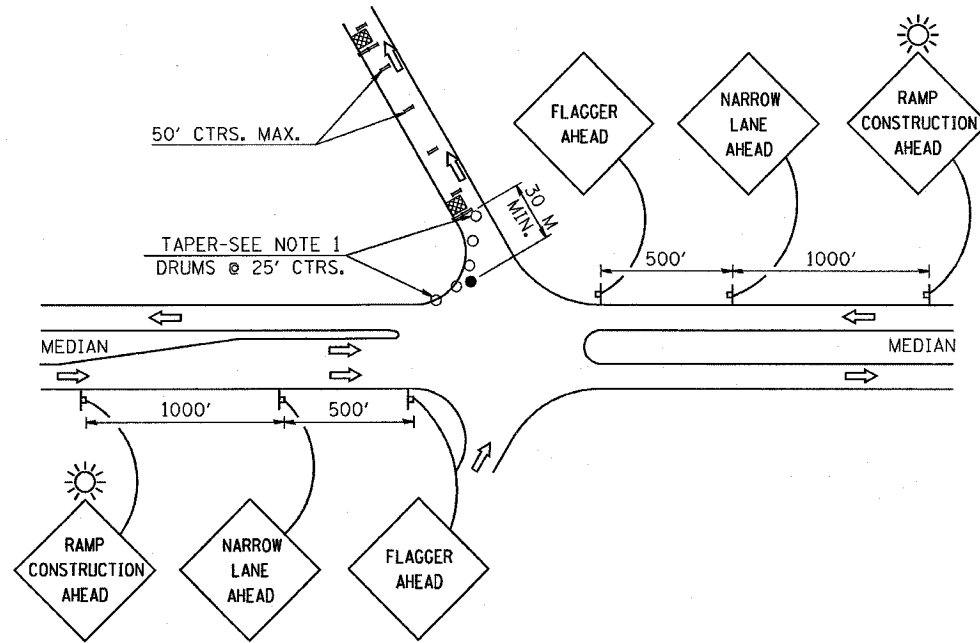
DRAWN BY _____
 CHECKED BY _____

F.A.I. RTE.	SECTION	COUNTY	TOTAL SHEETS	SHEET NO.
•	••	MADISON	37	35
STA. TO STA.				
FED. ROAD DIST. NO.	ILLINOIS	FED. AID PROJECT		
•-255-55/70				
••(60-7, 60-9)RS AND 60-16-1,7-1)RS				



TYPICAL ENTRANCE RAMP APPLICATION #3

SEE SHEET #26A FOR TRAFFIC CONTROL GENERAL NOTES AND LEGEND



TYPICAL ENTRANCE RAMP APPLICATION #4

SEE SHEET #26A FOR TRAFFIC CONTROL GENERAL NOTES AND LEGEND

GENERAL NOTES FOR RAMP SPECIAL

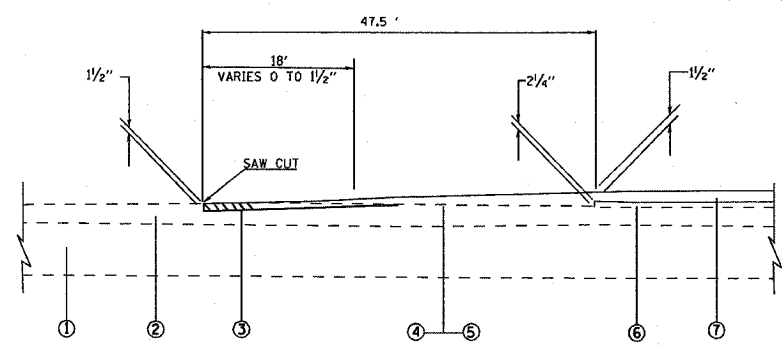
1. FOR EXIT RAMP THE TAPER SHALL BEGIN AS SHOWN AND EXTEND TO THE LOCATION OF THE FIRST PATCH. FOR ENTRANCE RAMP, THE TAPER SHALL BEGIN AT THE EDGE OF PAVEMENT AND EXTEND TO THE LOCATION OF THE FIRST PATCH FOR ENTRANCE RAMP.
2. AN OPERATION SHALL CONSIST OF ONE INDIVIDUAL RAMP, 1/2 AT A TIME.
3. A FLAGGER SHALL BE REQUIRED AT ALL TIMES WHEN MEN OR EQUIPMENT ARE PRESENT AT EACH OPERATION.
4. WHEN NO WORK IS BEING PERFORMED, THE FLAGGERS WILL NOT BE REQUIRED. IF THE FLAGGERS ARE NOT PRESENT, THE FLAGGER SIGNS SHALL BE REMOVED OR COVERED.
5. BARRICADES OR DRUMS SHALL BE PLACED ALONG THE CENTER LINE OF THE RAMP. THE CHANNELIZING DEVICES SHALL BE PLACED AT EACH OPEN HOLE ON THE APPROACH SIDE OF THE OPEN HOLE.
6. TWO ADDITIONAL CHANNELIZING DEVICES SHALL BE PLACED AT EACH OPEN HOLE ON THE APPROACH SIDE OF THE OPEN HOLE.
7. LIGHTS WILL NOT BE REQUIRED FOR DAY OPERATIONS.
8. ALL SIGNS SHALL BE POST MOUNTED IF THE CLOSURE TIME EXCEEDS FOUR DAYS.
9. LATERAL PLACEMENT OF THE FLAGGER MAY BE VARIED FROM THAT SHOWN. LIGHTS SHALL BE INSTALLED PER ARTICLE 701.16 OR AS DIRECTED BY ENGINEER. NO ADDITIONAL COMPENSATION ALLOWED.
- 10.

- PATCH
- FLAGGER WITH TRAFFIC CONTROL SIGN
- BARRICADE OR DRUM
- PERMANENT SUPPORT
- DRUMS
- LIGHT

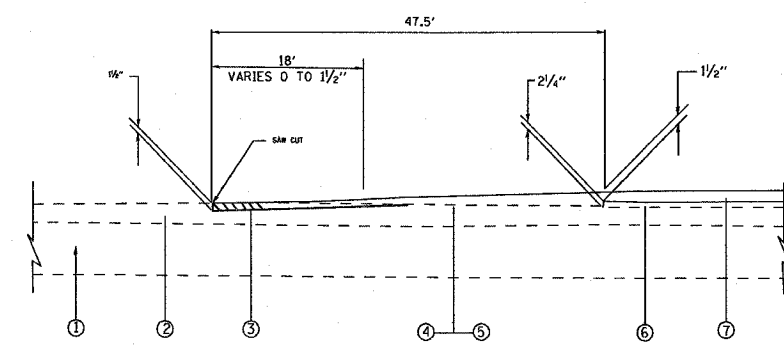
PLOT DATE = 8/1/2007
 FILE NAME = C:\Users\james\Documents\76B15\76B15.dwg
 PLOT SCALE = 1/8" = 1'-0"
 USER NAME = jaford

REVISIONS		ILLINOIS DEPARTMENT OF TRANSPORTATION
NAME	DATE	
		TRAFFIC CONTROL FAI 255, FAI 55/70 SECTION (60-7, 60-9)RS & 60-16-1,7-1)RS MADISON COUNTY DRAWN BY CHECKED BY
SCALE:	VERT. HORIZ.	DATE

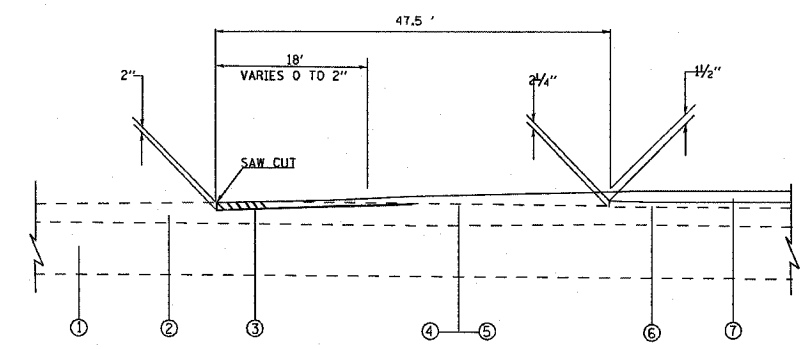
F.A.I. RTE.	SECTION	COUNTY	TOTAL SHEETS	SHEET NO.
•	••	MADISON	37	37
STA. TO STA.				
FED. ROAD DIST. NO. ILLINOIS FED. AID PROJECT				
•-255-55/70				
••(60-7, 60-9IRS AND 60-16-1,7-1IRS				



BUTT JOINT DETAIL
(CONCRETE)
STA. 101+70 TO STA. 102+17



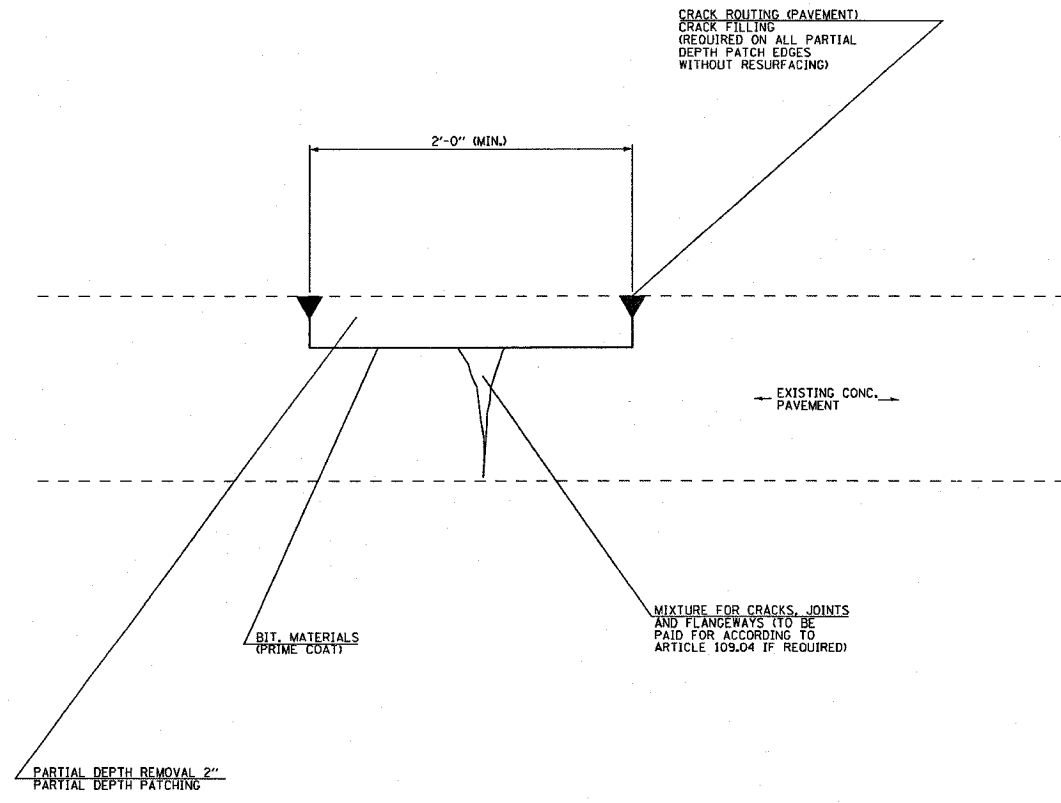
BUTT JOINT DETAIL
(HOT MIX ASPHALT)
STA. 161+40 TO STA. 161+87



BUTT JOINT DETAIL
PAVEMENT TRANSITION DETAIL
STA. 232+26.55 TO STA. 232+74.05

LEGEND

1. EXISTING PAVEMENT
2. EXISTING PCC PAVEMENT
3. PROPOSED PCC SURFACE REMOVAL - BUTT JOINT
4. PROPOSED BITUMINOUS MATERIALS (PRIME COAT)
5. PROPOSED AGGREGATE (PRIME COAT)
6. PROPOSED POLYMERIZED BCSC SUPER II 19.0 N70 - 2 1/4"
7. PROPOSED POLYMERIZED BCSC SUPER "E" N70 - 1 1/2"



PARTIAL DEPTH PATCHING DETAIL

PLOT DATE = 8/11/2007
 FILE NAME = c:\projects\76b15\76b15.dwg
 PLOT SCALE = 0.80000 / IN.
 USER NAME = dforab

REVISIONS	
NAME	DATE

ILLINOIS DEPARTMENT OF TRANSPORTATION
**BUTT JOINT DETAILS AND
 PARTIAL DEPTH PATCHING DETAIL**
 FAI 255, FAI 55/70
 SECTION (60-7, 60-9IRS &
 60-(6-1,7-1)IRS
 MADISON COUNTY
 SCALE: VERT. DRAWN BY
 HORIZ. CHECKED BY
 DATE