

Existing Structure: SN 002-0025 Built in 1973 as Illinois Central Railroad over FAI 57 Sec. 02-15B.
 Existing Structure consists of two single spans of 2 thru-plate girders.
 Holes will be drilled at selected stiffener locations to reduce possibility of brittle fracture. Vehicular and rail traffic will be maintained using appropriate traffic control.

No Salvage.

STATE OF ILLINOIS
 DEPARTMENT OF TRANSPORTATION

ROUTE NO.	SECTION	COUNTY	TOTAL SHEETS	SHEET NO.
FAI Rt. 57	*	Alexander	6	4
FED. ROAD DIST. NO. 7	ILLINOIS	FED. ROAD PROJECT		

Contract 78002

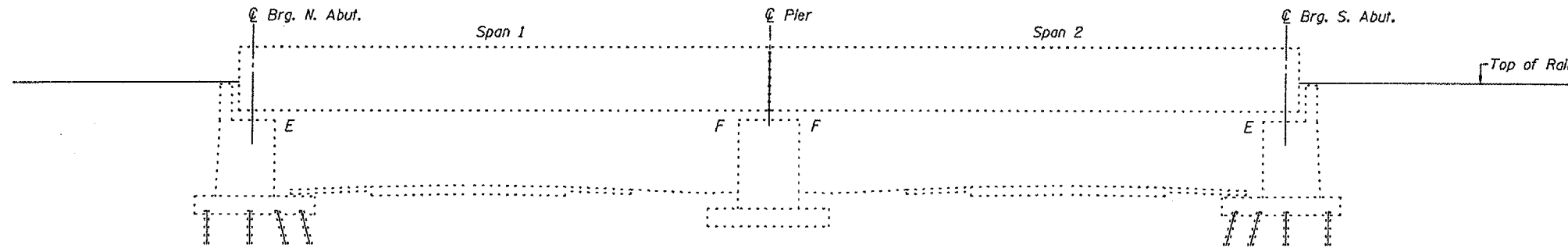
GENERAL NOTES

Plan dimensions and details relative to existing plans are subject to routine variations. The Contractor shall field verify existing dimensions and details affecting new construction and make necessary approved adjustments prior to construction or ordering of materials. Such variations shall not be cause for additional compensation for a change in scope of the work, however, the Contractor will be paid for the quantity actually furnished based upon the unit price bid for the work.

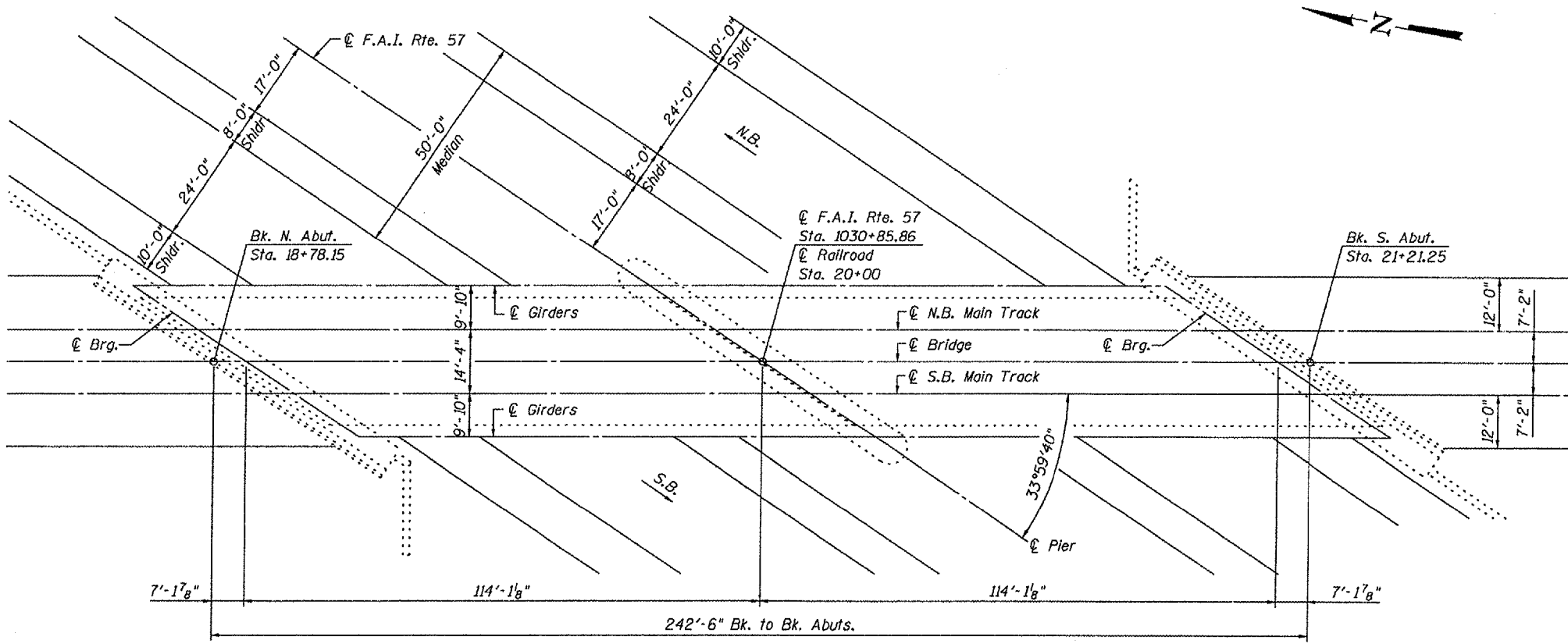
The existing structural steel coating contains lead. The Contractor shall take appropriate precautions to deal with the presence of lead on this project.

No field welding is permitted except as specified in the contract documents.

Existing plans will be available for viewing at the IDOT District 9 Headquarters.



ELEVATION



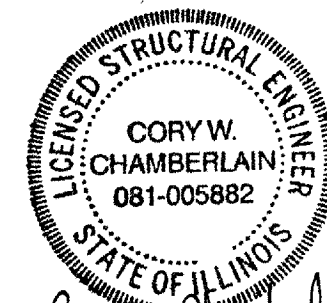
PLAN

INDEX OF SHEETS

1. General Plan and Elevation
2. Repair Location Plan
3. Modifications Details
4. Modifications Details

TOTAL BILL OF MATERIAL

ITEM	UNIT	SUPER	SUB	TOTAL
Stiffener Intersection Modification	Each	96		96
Bridge Monitoring	L.S.	1		1
Railroad Protective Liability Insurance	L.S.		1	1



Cory W. Chamberlain
 05/04/07
 Exp 11/30/08

LOADING COOPER E-80

Cooper E80 with Steam Impact

DESIGN SPECIFICATIONS

1970 AREMA Specifications for Steel Bridges (Original)
 2006 AREMA Specifications for Railway Engineering

DESIGN STRESSES

EXISTING FIELD UNITS

$f_t = 3,500$ psi
 $f_s = 20,000$ psi (A36 structural steel)

GENERAL PLAN & ELEVATION
 CNIC RAILROAD OVER INTERSTATE 57
 ALEXANDER COUNTY
 S.N. 002-0025

DESIGNED	C.W.C.
CHECKED	S.D.S.
DRAWN	D.L.H.
CHECKED	C.W.C.

WHKS & CO.
 ENGINEERS PLANNERS LAND SURVEYORS
 MASON CITY, IOWA DUBUQUE, IOWA AMES, IOWA
 E. DUBUQUE, ILLINOIS SPRINGFIELD, ILLINOIS ROCHESTER, MINNESOTA