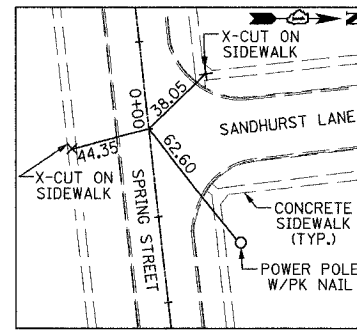


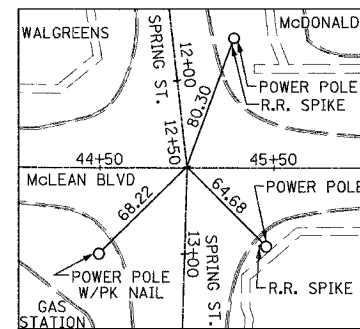
F.A.U. RTE.	SECTION	COUNTY	TOTAL SHEETS	SHEET NO.
2509	96-00094-01-WR	KANE	187	19
STA.		TO STA.		
FED. ROAD DIST. NO.		ILLINOIS FED. AID PROJECT		

CENTERLINE TIE POINTS

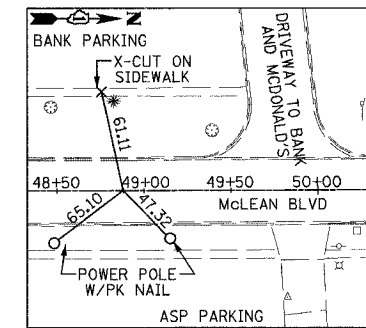
	NORTHING	EASTING	STATION	
MCLEAN BOULEVARD	POB-M1	4191.76	26+50.00	
	PC-M1	5904.58	43+62.84	
	PI-M1	6429.76	48+88.03	
	PT-M1	6954.93	54+13.20	
	PC-M2	9560.02	4955.97	80+18.40
	PI-M2	10120.54	4950.90	85+78.94
PT-M2	10680.80	4933.04	91+39.44	
BOWES ROAD	POB-BOWES	9830.96	0+00.00	
	POE-BOWES	9945.11	10+33.54	
SPRING STREET	POB-SPRING	5903.53	0+00.00	
	PI-SPRING	6041.74	12+50.00	
	POE-SPRING	6013.59	22+50.00	



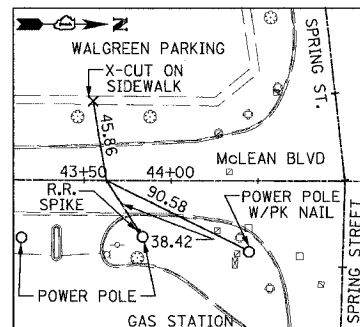
TIE AT STATION 0+00.00



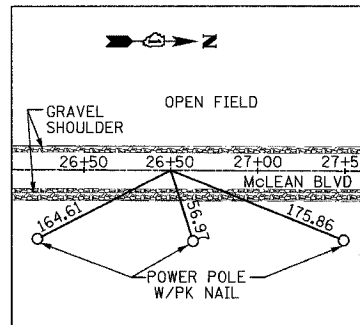
TIE AT STATION 12+50.00



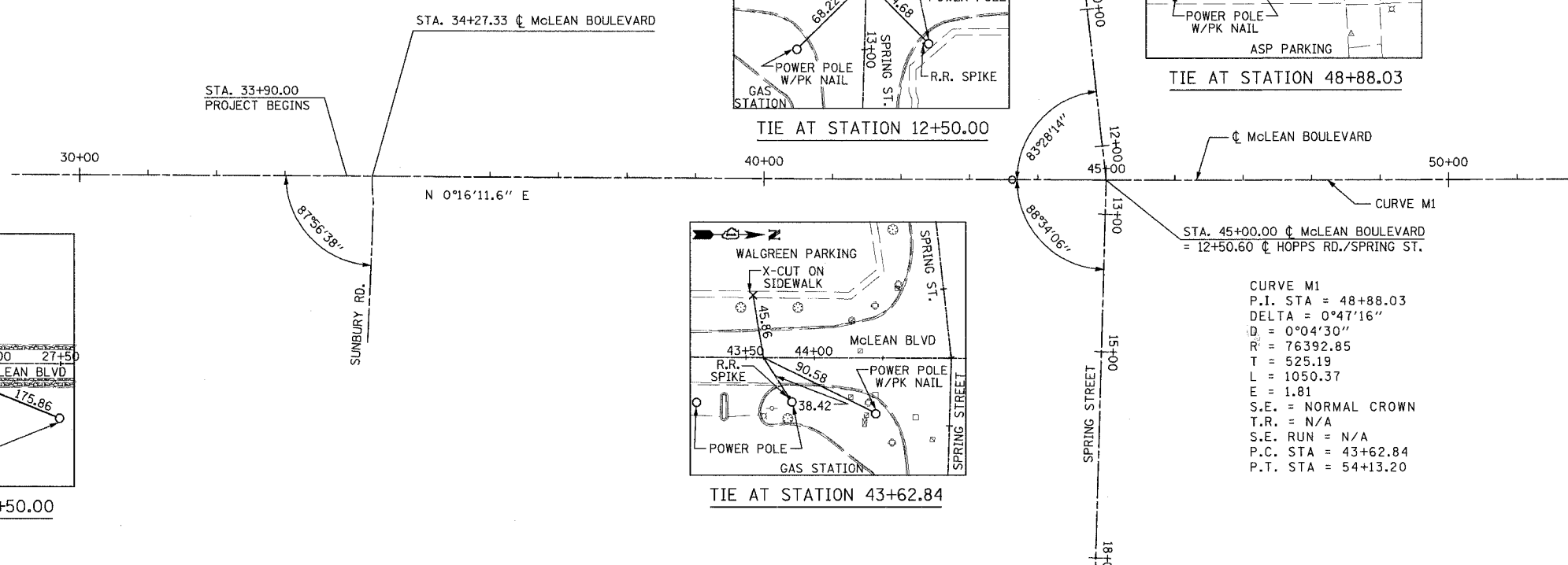
TIE AT STATION 48+88.03



TIE AT STATION 43+62.84



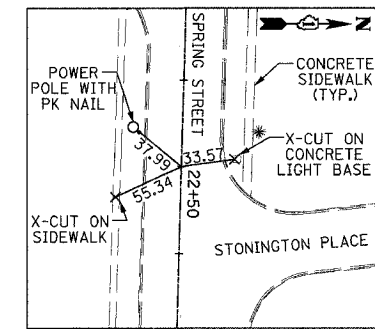
TIE AT STATION 26+50.00



CURVE M1
 P.I. STA = 48+88.03
 DELTA = 0°47'16"
 D = 0°04'30"
 R = 76392.85
 T = 525.19
 L = 1050.37
 E = 1.81
 S.E. = NORMAL CROWN
 T.R. = N/A
 S.E. RUN = N/A
 P.C. STA = 43+62.84
 P.T. STA = 54+13.20

BENCHMARKS

BENCHMARK	ELEV.	DESCRIPTION
U.S.G.S.	710.37	SOUTHWEST SECTION OF IL ROUTE 31/MCLEAN BOULEVARD.
TBM 10	814.51	SPIKE IN 2ND POWER POLE SOUTH OF BOWES ROAD ON EAST SIDE OF MCLEAN BOULEVARD.
TBM 11	819.25	FIRE HYDRANT NORTHWEST BOLT. CHISLED X AT SOUTHEAST SECTION OF BOWES ROAD/MCLEAN BLVD.
TBM 12	827.57	FIRE HYDRANT NORTHEAST BOLT. CHISLED X. NORTHEAST SECTION OF BOWES ROAD/MCLEAN BOULEVARD.
TBM 13	825.54	FIRE HYDRANT NORTHEAST BOLT. CHISLED X. BOWES ROAD/MCLEAN BOULEVARD



TIE AT STATION 22+50.00

CONTRACTOR SHALL RE-ESTABLISH ANY TIE POINTS THAT COULD BE DISTURBED OR DISPLACED BY CONSTRUCTION ACTIVITIES.



URS 100 SOUTH WACKER DRIVE
 SUITE 500 CHICAGO, IL 60606
 TEL (312) 939-1000
 FAX (312) 939-4198

REVISIONS	
NAME	DATE

McLEAN BOULEVARD
 ALIGNMENT, TIES AND BENCHMARKS
 SCALE: DATE 04/06/2007
 DRAWN BY SOI
 CHECKED BY