

CONTRACT NO. 83737				
F.A.U. RTE.	SECTION	COUNTY	TOTAL SHEETS	SHEET NO.
2509	96-00094-01-WR	KANE	187	22
STA.		TO STA.		
FED. ROAD DIST. NO.		ILLINOIS FED. AID PROJECT		

**SUGGESTED MAINTENANCE OF TRAFFIC GENERAL NOTES**

**TEMPORARY INFORMATION SIGNING:**

1. EXISTING TRAFFIC CONTROL, SIGNS & MESSAGES THAT ARE IN CONFLICT WITH THE PROPOSED MAINTENANCE OF TRAFFIC SHALL BE EITHER TEMPORARILY COVERED OR MODIFIED OR REMOVED AS SHOWN IN THE PLANS AND AS DIRECTED BY THE ENGINEER.

2. ALL TEMPORARY SIGNS SHALL NOT BE PAID FOR SEPARATELY BUT SHALL BE INCLUDED IN THE UNIT PRICES OF TRAFFIC CONTROL & PROTECTION PAY ITEMS.

**PRE-STAGE: TEMPORARY PAVEMENT WIDENING**

1. MAINTAIN EXISTING TRAFFIC LANES ON MCLEAN BOULEVARD IN ACCORDANCE WITH STANDARD 701326 AND CONSTRUCT TEMPORARY PAVEMENT WIDENING AS SHOWN IN THE PLANS. PROVIDE TEMPORARY SWALES/DITCHES TO MAINTAIN DRAINAGE AND PROVIDE NECESSARY EROSION CONTROL.

2. PROVIDE TEMPORARY TRAFFIC SIGNALS AT HOPPS ROAD/SPRING STREET/MCLEAN BOULEVARD AND BOWES ROAD/MCLEAN BOULEVARD INTERSECTIONS.

3. REMOVE THE EXISTING PAVEMENT MARKINGS AND PROVIDE TEMPORARY PAVEMENT MARKINGS IN ACCORDANCE WITH STANDARD 701311-02. SHIFT THE SB TRAFFIC ONTO THE TEMPORARY PAVEMENT WIDENING AND NB TRAFFIC ONTO THE REMAINING HALF OF THE OF THE EXISTING PAVEMENT.

4. REMOVE THE MEDIAN ON BOWES ROAD (EAST LEG) AND REPLACE IT WITH THE TEMPORARY HOT-MIX ASPHALT BASE COURSE WIDENING.

**STAGE I: PERMANENT NB PAVEMENT ON MCLEAN BOULEVARD**

1. MAINTAIN THE TRAFFIC AS SHOWN IN THE PLANS.

2. CONSTRUCT PERMANENT NB PAVEMENT ON MCLEAN BOULEVARD APART FROM HOT-MIX ASPHALT SURFACE COURSE. CONSTRUCT THE NECESSARY DRAINAGE DITCH, STORM SEWERS AND STRUCTURES, CURB AND GUTTER, SIDEWALK, BIKE PATH AND PARKWAY. RECONSTRUCT THE NECESSARY EXISTING DRAINAGE STRUCTURES, AND PROVIDE NECESSARY EROSION CONTROL.

3. CONSTRUCT SUNBURY ROAD, KANE STREET, EAST LEG OF JENNA DRIVE AND SUNDOWN DRIVE USING SHORT TERM PAVING IN ACCORDANCE WITH THE STANDARD 701501-02 AND DETAILS SHOWN IN THE PLANS.

4. CONSTRUCT NORTH SIDE OF HOPPS ROAD/SPRING STREET AND SOUTH SIDE OF BOWES ROAD APART FROM BITUMINOUS SURFACE COURSE PROVIDING LEFT TURN LANE AT BOTH INTERSECTIONS.

5. AT THE END OF STAGE I, COMPLETE THE SUBSTAGE WORKS FOR TWO SIGNALIZED INTERSECTIONS.

6. PROVIDE ADDITIONAL TEMPORARY PAVEMENT WIDENING AND TEMPORARY PAVEMENT MARKING AS SHOWN ON THE PLANS FOR STAGE 2 TRAFFIC.

**STAGE II: PERMANENT NB PAVEMENT ON MCLEAN BOULEVARD**

1. SHIFT TRAFFIC OVER TO THE STAGE II CONFIGURATION.

2. CONSTRUCT PERMANENT SB PAVEMENT ON MCLEAN BOULEVARD APART FROM HOT-MIX ASPHALT SURFACE COURSE. CONSTRUCT THE NECESSARY DRAINAGE DITCH, STORM SEWERS AND STRUCTURES, CURB AND GUTTER, SIDEWALK, BIKE PATH AND PARKWAY. RECONSTRUCT OR ADJUST THE NECESSARY EXISTING DRAINAGE STRUCTURES, AND PROVIDE NECESSARY EROSION CONTROL.

3. COMPLETE THE WEST LEG SHORT TERM PAVING OF JENNA DRIVE/MCLEAN BOULEVARD INTERSECTION APART FROM HOT-MIX ASPHALT SURFACE COURSE IN ACCORDANCE WITH STANDARD 701501-2 AND THE DETAILS SHOWN IN THE PLANS.

4. CONSTRUCT THE SOUTH SIDE OF HOPPS ROAD/SPRING STREET AND NORTH SIDE OF BOWES ROAD.

5. PROVIDE TEMPORARY MARKING FOR STAGE III.

**STAGE III: MEDIAN CONSTRUCTION/FINAL SURFACE**

1. SHIFT TRAFFIC OVER TO THE STAGE III CONFIGURATION.

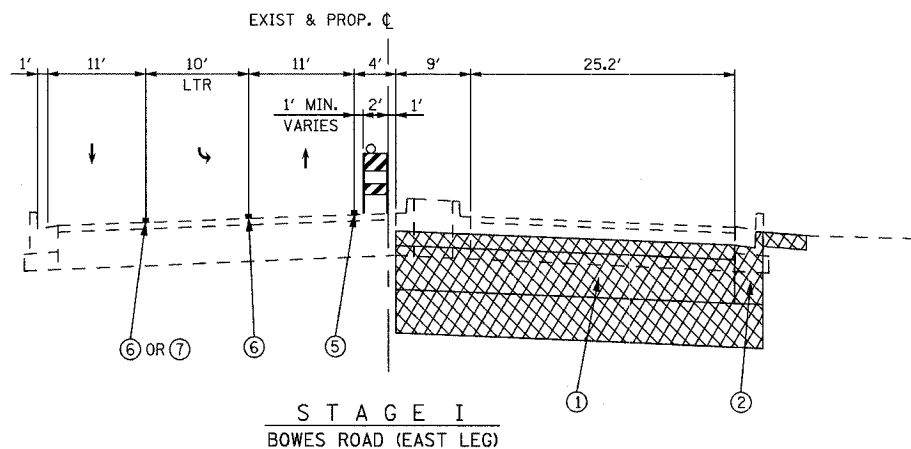
2. COMPLETE THE CONSTRUCTION OF MEDIANS FOR HOPPS ROAD/SPRING STREET (WEST LEG) AND BOWES ROAD (EAST LEG).

3. CONSTRUCT CURB AND GUTTER FROM STA 31+96 TO STA 38+70. USE STANDARD 701311-02 WHEN LANE CLOSURE IS NECESSARY.

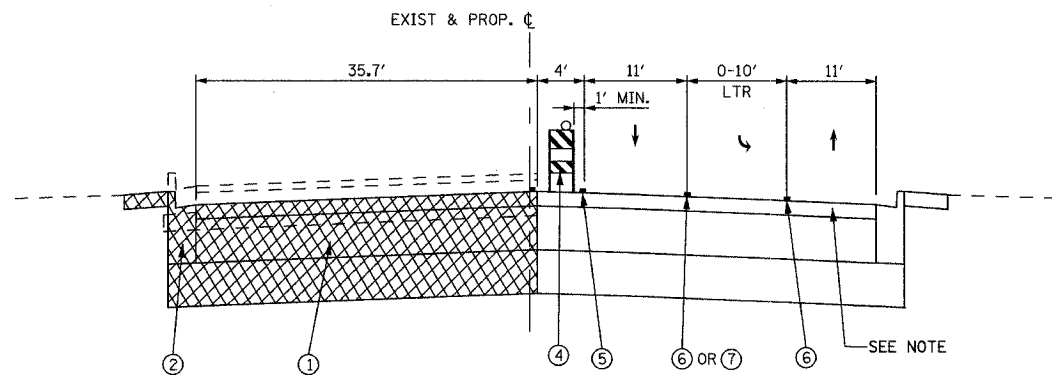
4. CONSTRUCT BITUMINOUS CONCRETE SURFACE COURSE IN ALL NEW PAVEMENT AND WIDENED PAVEMENTS WITHIN THE PROJECT USING DAY ONLY LANE CLOSURES (STANDARD 701606-03). APPLY FINAL PAVEMENT MARKINGS.

**SUGGESTED MAINTENANCE OF TRAFFIC SEQUENCE**

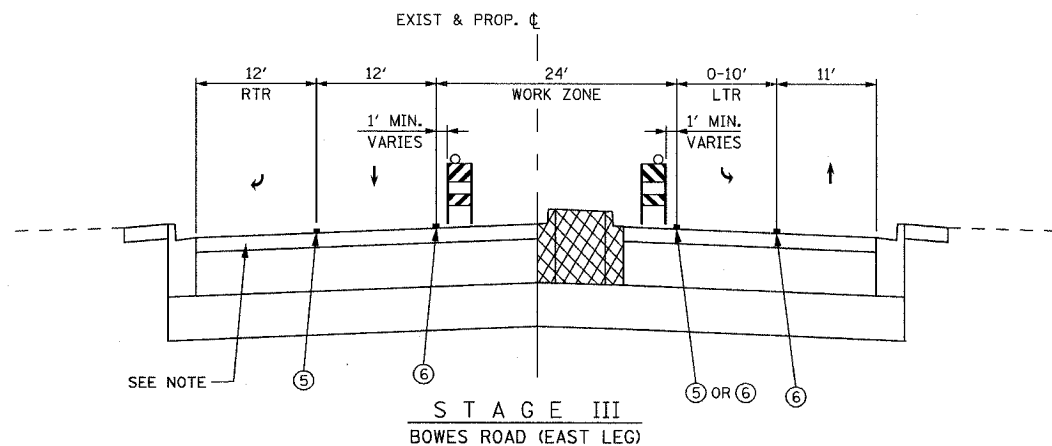
STAGES	TEMP. PVMNT. MARKINGS ON MCLEAN BLVD.
PRESTAGE	USE IDOT STANDARD DETAIL.
STAGE I	SEE MOT PLAN SHEETS.
SUBSTAGES A1 AND A2	MAINTAIN STAGE I STRIPINGS WITH MINOR MODIFICATION FOR THE INTERIM RIGHT TURN DURING THE SUBSTAGE A1.
SUBSTAGES B1 AND B2	MAINTAIN STAGE I STRIPINGS WITH MODIFICATION TO THE INTERSECTIONS AND THE INTERSECTION APPROACHES.
SUBSTAGES B3 (BOWES ROAD)	MAINTAIN SUBSTAGE B2 STRIPINGS WITH MODIFICATION TO THE INTERSECTIONS AND THE INTERSECTION APPROACHES.
SUBSTAGES C1 AND C2	SEE MOT PLAN SHEETS. PROVIDE STAGE 2 STRIPINGS BEYOND THE INTERSECTION APPROACHES.
SUBSTAGES D1 AND D2	MAINTAIN SUBSTAGE C2 STRIPINGS WITH MODIFICATION TO THE INTERSECTIONS AND THE INTERSECTION APPROACHES.
STAGE II	MAINTAIN SUBSTAGE D2 STRIPINGS WITH MODIFICATION TO THE INTERSECTIONS AND THE INTERSECTION APPROACHES.
STAGE III	SEE MOT PLAN SHEETS.
FINAL SURFACE COURSE	USE IDOT STANDARD DETAIL.



**STAGE I**  
BOWES ROAD (EAST LEG)



**STAGE II**  
BOWES ROAD (EAST LEG)



**STAGE III**  
BOWES ROAD (EAST LEG)

**NOTE:**  
DURING THE STAGES I, II AND III BUILD THE PROPOSED PAVEMENT UP TO 1/2" BELOW THE PROPOSED GRADE ELEVATION. AFTER COMPLETION OF STAGE III PAVE 1/2" OF HOT-MIX ASPHALT SURFACE COURSE.

**LEGEND**

- ① PROPOSED HOT-MIX ASPHALT PAVEMENT
- ② PROPOSED COMBINATION CONCRETE CURB AND GUTTER
- ③ TEMPORARY PAVEMENT WIDENING - (HOT-MIX ASPHALT CONCRETE BASE COURSE WIDENING 10')
- ④ BARRICADE OR DRUM WITH STEADY BURNING LIGHTS
- ⑤ TEMPORARY PAVEMENT MARKING 4" (WHITE)
- ⑥ TEMPORARY PAVEMENT MARKING 4" (YELLOW)
- ⑦ TEMPORARY PAVEMENT MARKING 6" (WHITE)
- ⑧ TEMPORARY SEEDING CLASS 7
- ⑨ NOT USED
- ⑩ TEMPORARY CONCRETE BARRIER
- ▨ CONSTRUCTION LIMIT
- ▨ TEMPORARY PAVEMENT WIDENING

REVISIONS	
NAME	DATE

**URS** 100 SOUTH WACKER DRIVE  
SUITE 500 CHICAGO, IL 60606  
TEL (312) 939-1000 FAX (312) 939-4198

**McLEAN BOULEVARD**  
**MAINTENANCE OF TRAFFIC**  
**BOWES ROAD**  
**TYPICAL SECTIONS**

SCALE: DATE 04/06/2007 DRAWN BY CHECKED BY