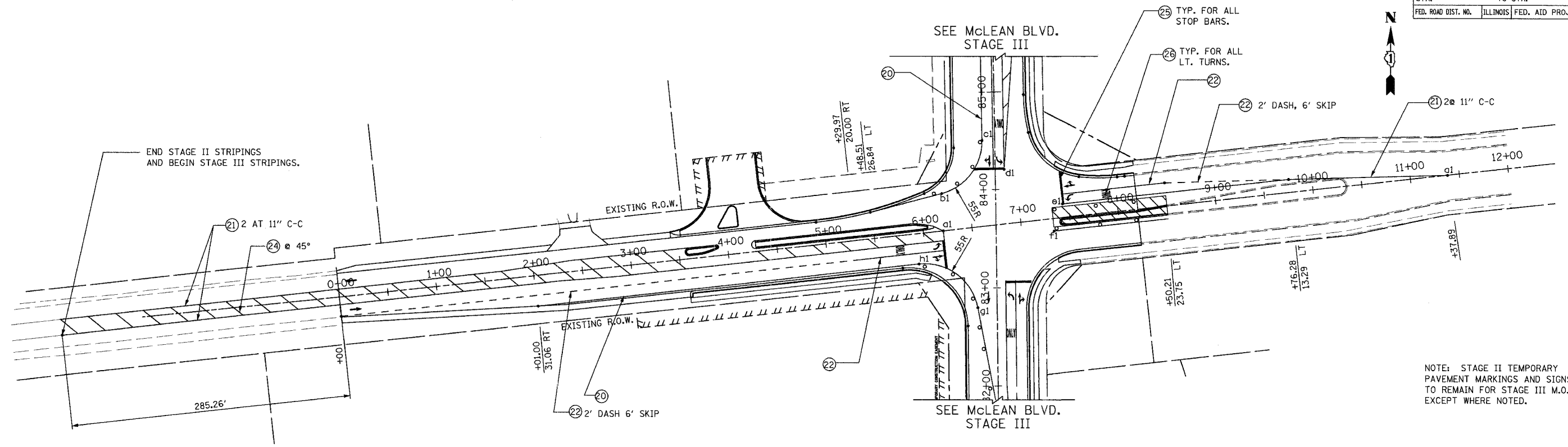


| F.A.U. RTE. | SECTION | COUNTY | TOTAL SHEETS | SHEET NO. |
|---------------------|---------------------------|---------|--------------|-----------|
| 2509 | 96-00094-01-WR | KANE | 187 | 49 |
| STA. | | TO STA. | | |
| FED. ROAD DIST. NO. | ILLINOIS FED. AID PROJECT | | | |



NOTE: STAGE II TEMPORARY PAVEMENT MARKINGS AND SIGNS TO REMAIN FOR STAGE III M.O.T. EXCEPT WHERE NOTED.

| POINTS | STA & OFFSET | POINTS | STA & OFFSET |
|--------|-------------------|--------|--------------|
| a1 | 6+20.50 | | |
| b1 | 6+23.12, 37.79 LT | | |
| c1 | +50.26, 12.93 LT | | |
| d1 | +20.33, 9.13 RT | | |
| e1 | 7+44.29, 13.65 LT | | |
| f1 | 7+32.98, 12.68 RT | | |
| g1 | +79.97, 19.73 LT | | |
| h1 | 5+92.24, 30.99 RT | | |
| | | | |
| | | | |
| | | | |

ALL LANES ARE 11 FT WIDTH UNLESS NOTED OTHERWISE.

- LEGEND**
- ① PROPOSED HOT-MIX ASPHALT PAVEMENT
 - ② PROPOSED COMBINATION CONCRETE CURB AND GUTTER
 - ③ TEMPORARY PAVEMENT WIDENING - (HOT-MIX ASPHALT CONCRETE BASE COURSE WIDENING 10")
 - ④ BARRICADE OR DRUM WITH STEADY BURNING LIGHTS
 - ⑤ TEMPORARY PAVEMENT MARKING 4" (WHITE)
 - ⑥ TEMPORARY PAVEMENT MARKING 4" (YELLOW)
 - ⑦ TEMPORARY PAVEMENT MARKING 6" (WHITE)
 - ⑧ TEMPORARY SEEDING CLASS 7
 - ⑨ NOT USED
 - ⑩ TEMPORARY CONCRETE BARRIER
 - ▨ CONSTRUCTION LIMIT
 - ▩ TEMPORARY PAVEMENT WIDENING

URS 100 SOUTH WACKER DRIVE
SUITE 500 TEL (312) 939-1000
CHICAGO, IL 60606 FAX (312) 939-4198

| REVISIONS | |
|-----------|------|
| NAME | DATE |
| | |
| | |
| | |
| | |
| | |
| | |
| | |
| | |
| | |
| | |

McLEAN BOULEVARD

SUGGESTED
MAINTENANCE OF TRAFFIC
BOWES ROAD
STAGE III

SCALE: DATE 04/06/2007 DRAWN BY CHECKED BY