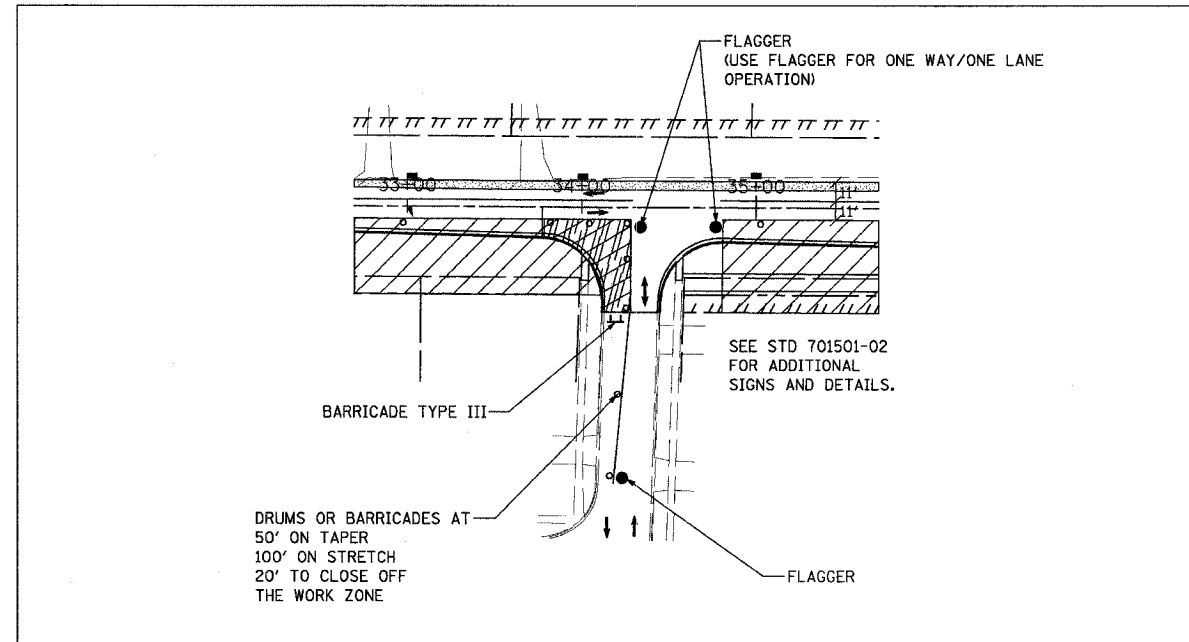


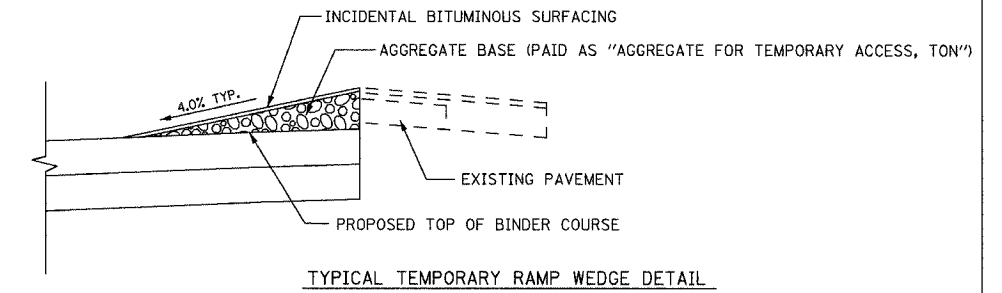
F.A.A. RTE.	SECTION	COUNTY	TOTAL SHEETS	SHEET NO.
2509	96-00094-01-WR	KANE	187	50
STA.		TO STA.		
FED. ROAD DIST. NO.	ILLINOIS	FED. AID PROJECT		



TYPICAL DETAIL FOR SIDE STREET SHORT TERM PAVING STAGES I & II

NOTES:

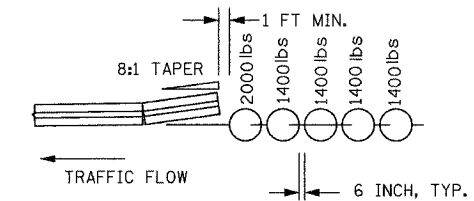
- "SHORT TERM" IS DEFINED AS THE CONSTRUCTION PERIOD NO GREATER THAN TWELVE HOUR PERIOD.
- IF CONTRACTOR DEEMS THE WORK WILL NOT BE COMPLETED WITHIN THE "SHORT TERM" PERIOD, HE/SHE SHALL PROVIDE TWO WAY TRAFFIC PRIOR TO LEAVING THE SITE. TEMPORARY BACKFILL AND/OR RAMP ALONG WITH SAFE TRAFFIC CONTROL MEASURES SHALL BE UTILIZED FOR THIS PURPOSE.
- FLAGGERS ARE REQUIRED ONLY DURING THE "SHORT TERM" PERIOD AND DURING THE ONE WAY/ONE LANE OPERATION.
- CONES MAY SUBSTITUTE THE DRUMS/BARRICADES DURING THE DAY TIME. NO EXCEPTION FOR THE NIGHT TIME OPERATION.



TYPICAL TEMPORARY RAMP WEDGE DETAIL

NOTES:

- PROVIDE THE TEMPORARY RAMP WEDGE TO TRANSITION FROM THE NEW PAVEMENT TO EXISTING PAVEMENT EITHER LONGITUDINALLY OR TRANSVERSELY.
- TEMPORARY HOT-MIX ASPHALT RAMPS FOR BUTT JOINTS ARE AN EXCEPTION AND WILL BE PAID FOR SEPARATELY AS "TEMPORARY RAMP" IN ACCORDANCE WITH THE SECTION 406 OF THE STANDARD SPECIFICATIONS.
- REMOVAL OF TEMPORARY RAMP WEDGES AND TEMPORARY HMA RAMPS WILL NOT BE PAID FOR SEPARATELY. THE COST OF REMOVAL SHALL BE INCLUDED IN THE UNIT PRICE OF THE PAVEMENT REMOVAL.



TYPICAL LAYOUT FOR SAND MODULE IMPACT ATTENUATOR

NOTE: THIS CONFIGURATION IS TO BE USED ONLY WHEN THE ENGINEER DETERMINES THAT THE STANDARD CONFIGURATION OR OTHER APPROVED ALTERNATIVES CAN NOT BE USED. DO NOT USE TERMINAL SECTION.

**URS** 100 SOUTH WACKER DRIVE  
SUITE 500 TEL (312) 939-1000  
CHICAGO, IL 60606 FAX (312) 939-4198

REVISIONS	
NAME	DATE

MCLEAN BOULEVARD  
SUGGESTED  
MAINTANANCE OF TRAFFIC  
DETAILS

SCALE:  
DATE 04/06/2007

DRAWN BY  
CHECKED BY