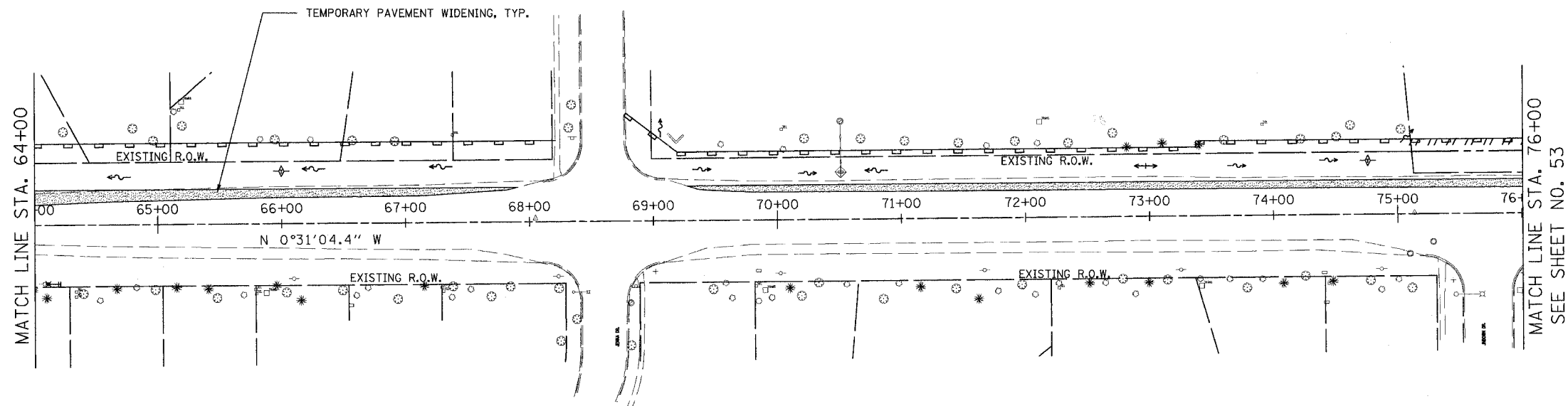
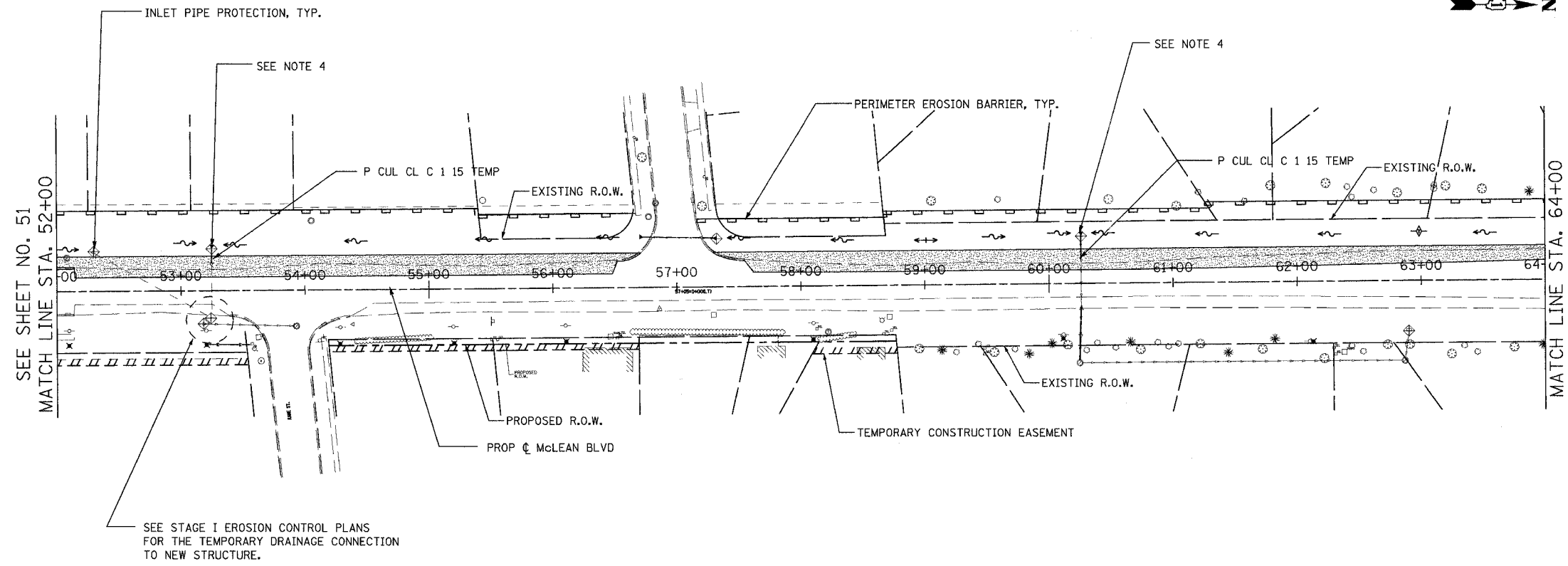


CONTRACT NO. 83737

F.A.U. RTE.	SECTION	COUNTY	TOTAL SHEETS	SHEET NO.
2509	96-00094-01-WR	KANE	187	52
STA.		TO STA.		
FED. ROAD DIST. NO.		ILLINOIS	FED. AID PROJECT	



NOTES:

1. THE RESIDENT ENGINEER SHALL HAVE THE FINAL DETERMINATION OF THE PLACEMENT AND LOCATION OF THE PERIMETER EROSION BARRIER
2. SEE SUGGESTED MAINTENANCE OF TRAFFIC PLANS FOR ADDITIONAL INFORMATION REGARDING THE SEQUENCE OF CONSTRUCTION.
3. NOT ALL DRAINAGE STRUCTURES ARE SHOWN. SEE DRAINAGE PLANS FOR ADDITIONAL INFORMATION.
4. FLARED END SECTIONS FOR THE TEMPORARY PIPE CULVERTS ARE OMITTED INTENTIONALLY.
5. MAINTAIN THE PROTECTION MEASURES FROM THE PREVIOUS STAGE UNTIL THE REMOVAL IS ABSOLUTELY NECESSARY.

FOR THE EROSION CONTROL PLAN  
LEGEND SEE SHEET 51.

REVISIONS	
NAME	DATE

**URS** 100 SOUTH WACKER DRIVE TEL (312) 939-1000  
SUITE 500 CHICAGO, IL 60606 FAX (312) 939-4198

**McLEAN BOULEVARD**

**EROSION CONTROL PLANS  
PRESTAGE**

SCALE: DATE 04/06/2007

DRAWN BY MIA  
CHECKED BY MHL