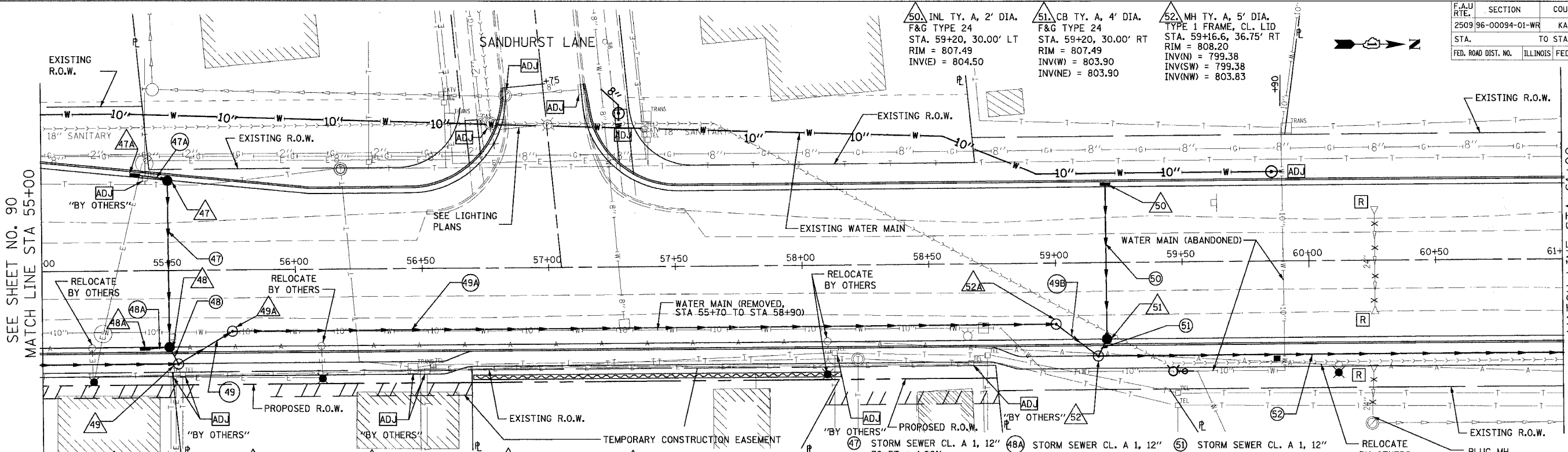


CONTRACT NO. 83737			
F.A.U. RTE.	SECTION	COUNTY	TOTAL SHEETS NO.
2509 96-00094-01-WR		KANE	187 91
STA.	TO STA.		
FED. ROAD DIST. NO.	ILLINOIS FED. AID PROJECT		

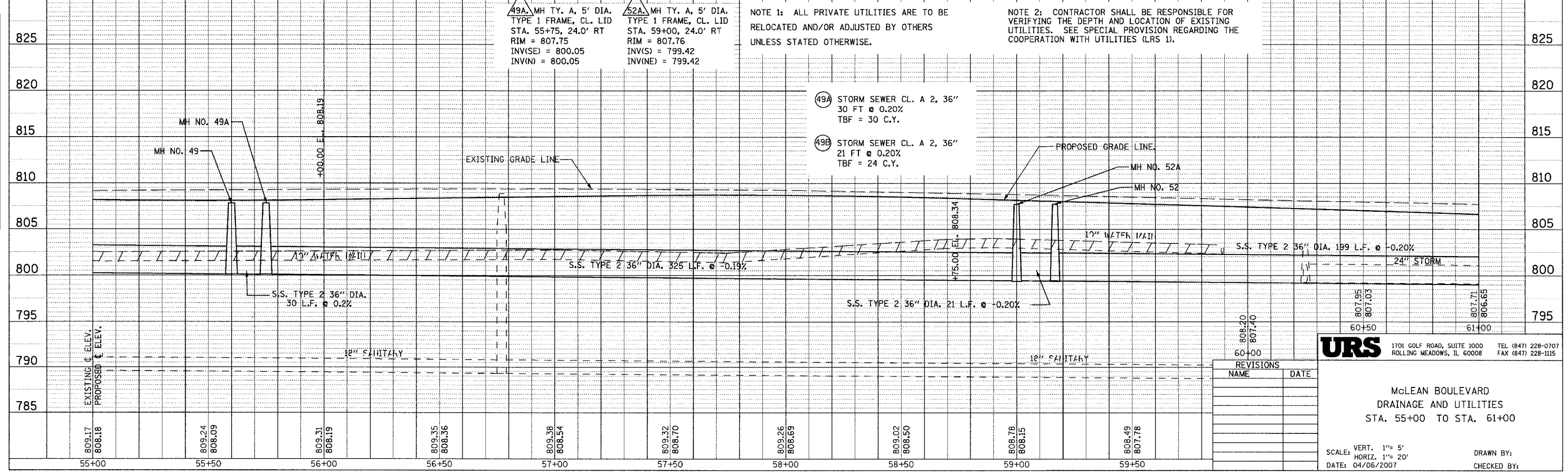


FOR DRAINAGE AND UTILITY LEGEND SEE SHEET NO. 87.

- 47. CB TY. A, 4' DIA. F&G TYPE 24 STA. 55+48.81, 35.6' LT RIM = 807.38 INV(E) = 804.23 INV(S) = 804.23
- 47A. INL TY. A, 2' DIA. F&G TYPE 24 STA. 55+38, 37.9' LT RIM = 807.37 INV(N) = 804.30
- 48. CB TY. A, 4' DIA. F&G TYPE 24 STA. 55+48.81, 30.00' RT RIM = 807.58 INV(W) = 803.53 INV(E) = 803.50 INV(S) = 804.53
- 48A. INL TY. A, 2' DIA. F&G TYPE 24 STA. 55+38, 30.00' RT RIM = 807.59 INV(N) = 804.60
- 49. MH TY. A, 5' DIA. TYPE 1 FRAME, CL. LID STA. 55+53.5, 36.75' RT RIM = 808.20 INV(NW) = 800.11 INV(S) = 800.11 INV(SW) = 803.50
- 49A. MH TY. A, 5' DIA. TYPE 1 FRAME, CL. LID STA. 55+75, 24.0' RT RIM = 807.75 INV(E) = 800.05 INV(N) = 800.05
- 49B. STORM SEWER CL. A 1, 12" 7 FT @ 1.00% TBF = 9.1 C.Y.
- 49C. STORM SEWER CL. A 1, 12" 7 FT @ 1.00% TBF = 0.9 C.Y.
- 49D. STORM SEWER CL. A 1, 12" 3 FT @ 1.00% TBF = 0.8 C.Y.
- 50. STORM SEWER CL. A 1, 12" 7 FT @ 1.00% TBF = 0.9 C.Y.
- 50A. STORM SEWER CL. A 1, 12" 325 FT @ 0.20% TBF = 438 C.Y.
- 50B. STORM SEWER CL. A 1, 12" 60 FT @ 1.00% TBF = 7.8 C.Y.
- 51. CB TY. A, 4' DIA. F&G TYPE 24 STA. 59+20, 30.00' RT RIM = 807.49 INV(W) = 803.90 INV(E) = 803.90
- 51A. STORM SEWER CL. A 1, 12" 7 FT @ 1.00% TBF = 0.9 C.Y.
- 51B. STORM SEWER CL. A 2, 36" 192 FT @ 0.20% TBF = 252.2 C.Y.
- 51C. STORM SEWER CL. A 2, 36" 20 FT @ 0.20% TBF = 14.8 C.Y.
- 52. MH TY. A, 5' DIA. TYPE 1 FRAME, CL. LID STA. 59+16.6, 36.75' RT RIM = 808.20 INV(N) = 799.38 INV(SW) = 799.38 INV(W) = 803.83
- 52A. STORM SEWER CL. A 1, 12" 3 FT @ 1.00% TBF = 0.8 C.Y.
- 52B. STORM SEWER CL. A 2, 36" 192 FT @ 0.20% TBF = 252.2 C.Y.
- 52C. STORM SEWER CL. A 2, 36" 20 FT @ 0.20% TBF = 14.8 C.Y.

NOTE 1: ALL PRIVATE UTILITIES ARE TO BE RELOCATED AND/OR ADJUSTED BY OTHERS UNLESS STATED OTHERWISE.

NOTE 2: CONTRACTOR SHALL BE RESPONSIBLE FOR VERIFYING THE DEPTH AND LOCATION OF EXISTING UTILITIES. SEE SPECIAL PROVISION REGARDING THE COOPERATION WITH UTILITIES (LRS 1).



REVISIONS	
NAME	DATE

**URS** 1701 GOLF ROAD, SUITE 1000 TEL (847) 228-0707 ROLLING MEADOWS, IL 60008 FAX (847) 228-1115

McLEAN BOULEVARD  
DRAINAGE AND UTILITIES  
STA. 55+00 TO STA. 61+00

SCALE: VERT. 1" = 5'  
HORIZ. 1" = 20'  
DATE: 04/06/2007

DRAWN BY:  
CHECKED BY: