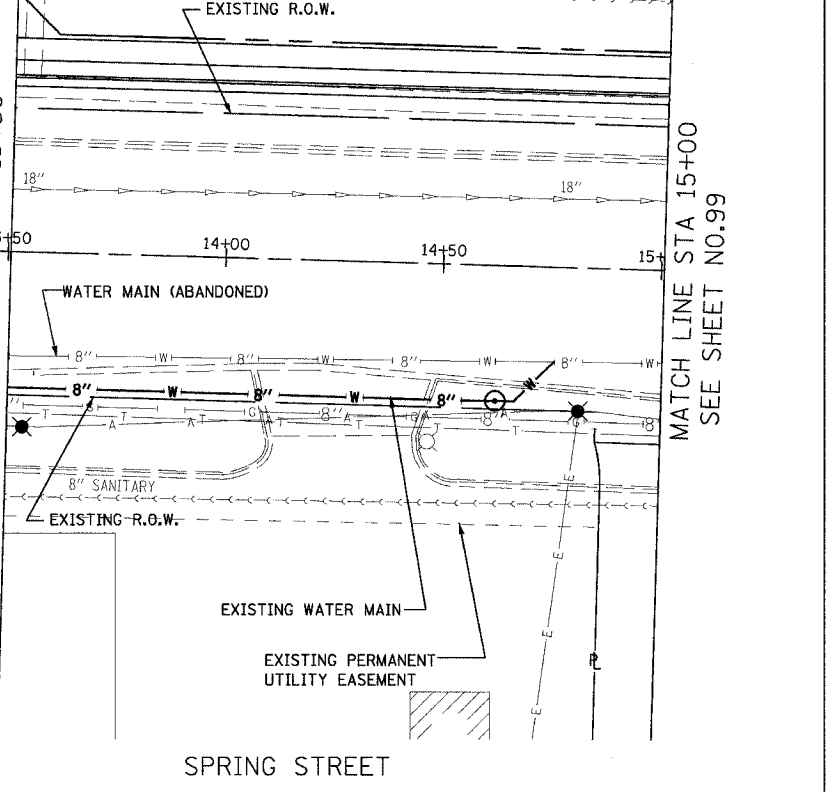
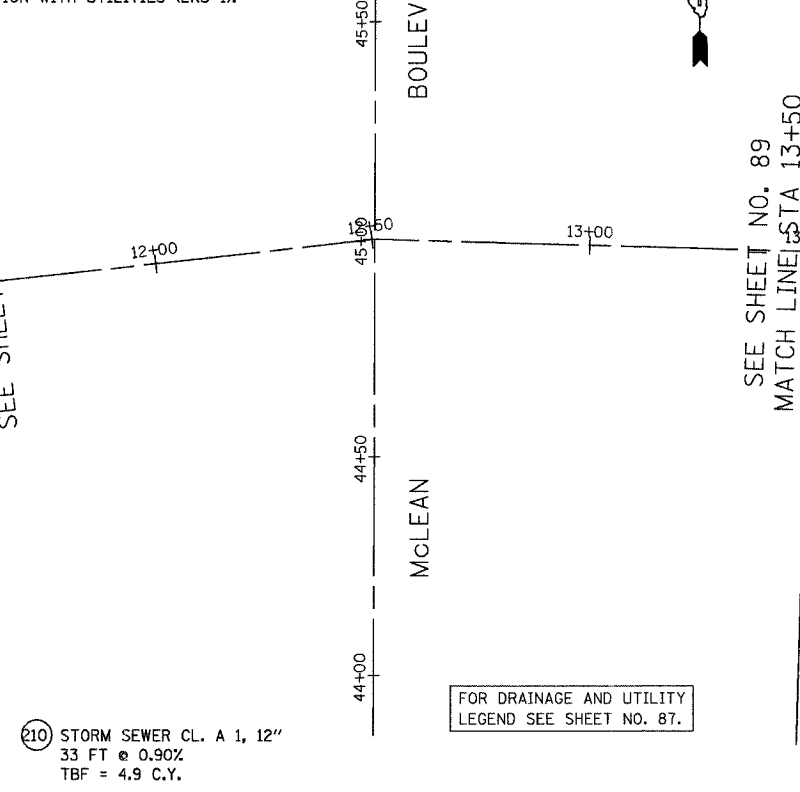
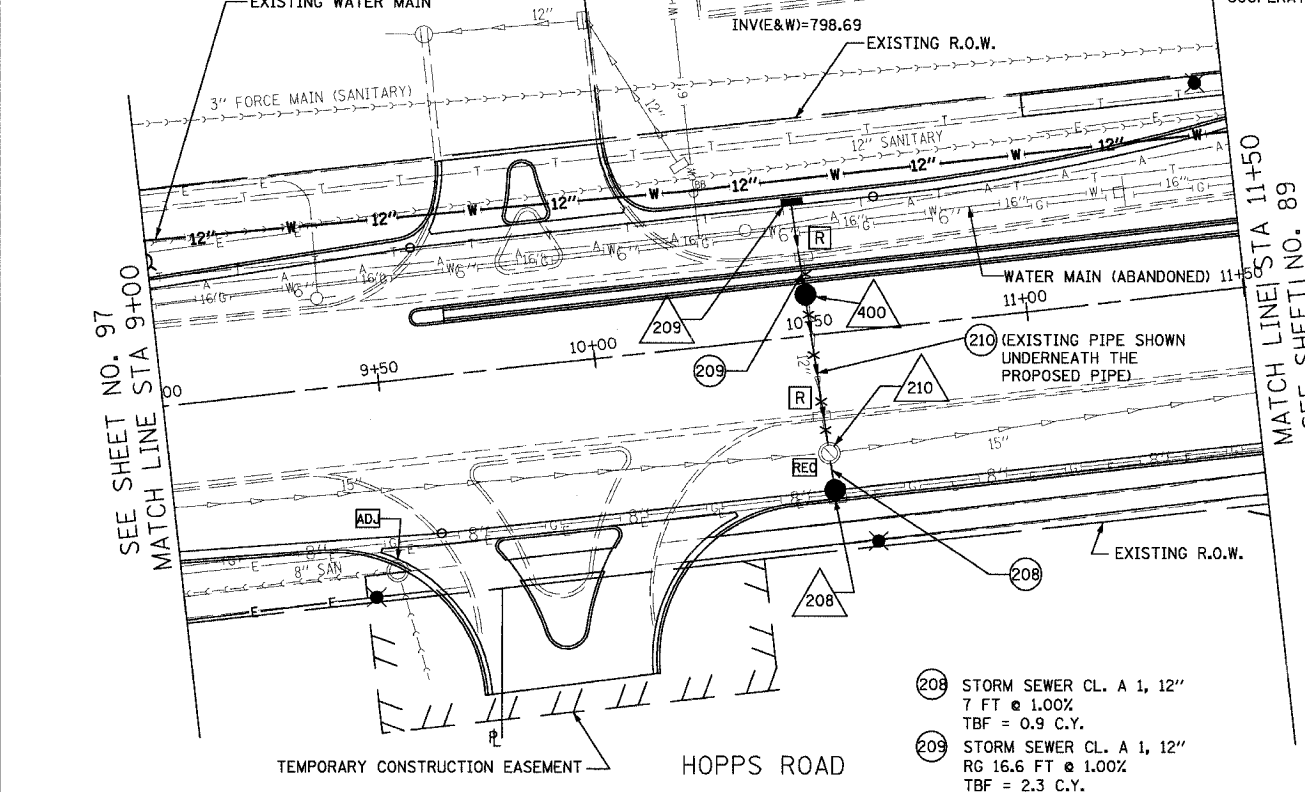


CONTRACT NO. 83737				
F.A.U. RTE.	SECTION	COUNTY	TOTAL SHEETS	SHEET NO.
2509	96-00094-01-WR	KANE	187	98
STA.	TO STA.			
FED. ROAD DIST. NO.	ILLINOIS FED. AID PROJECT			

- 208 CB TY. C, 2' DIA. F&G TYPE 24 STA. 10+51.50, 36.00' RT RIM = 813.90 INV(N) = 811.26
- 209 INL TY. A, 2' DIA. F&G TYPE 24 STA. 10+48.74, 30.00' LT RIM = 814.00 INV(S) = 811.10
- 210 EX. MH TO BE REC. FRAME TYPE 1, CL. LID STA. 10+51.15, 27.47' RT RIM = 814.06 INV(S) = 811.03 INV(N) = 810.54
- 400 CB TY. A, 4' DIA. F&G TYPE 24 STA. 10+49.18, 12.00' LT RIM = 814.36 INV(S) = 810.83

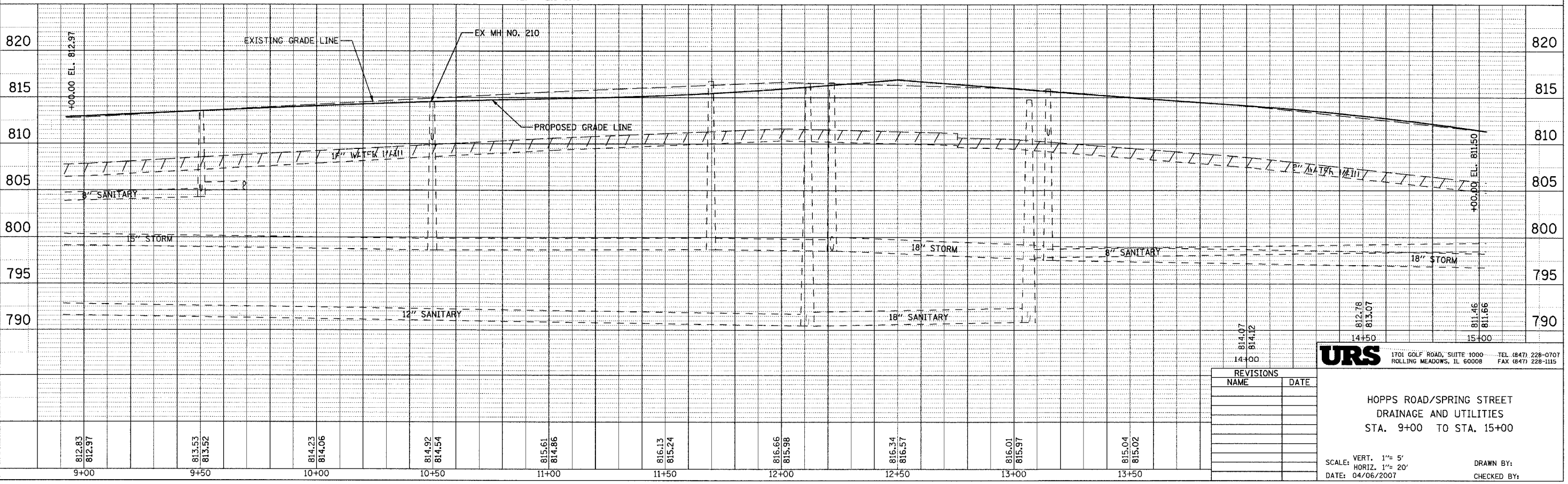
NOTE 1: ALL PRIVATE UTILITIES ARE TO BE RELOCATED AND/OR ADJUSTED BY OTHERS UNLESS STATED OTHERWISE.

NOTE 2: CONTRACTOR SHALL BE RESPONSIBLE FOR VERIFYING THE DEPTH AND LOCATION OF EXISTING UTILITIES. SEE SPECIAL PROVISION REGARDING THE COOPERATION WITH UTILITIES (LRS 1).



- 208 STORM SEWER CL. A 1, 12" 7 FT @ 1.00% TBF = 0.9 C.Y.
- 209 STORM SEWER CL. A 1, 12" RG 16.6 FT @ 1.00% TBF = 2.3 C.Y.
- 210 STORM SEWER CL. A 1, 12" 33 FT @ 0.90% TBF = 4.9 C.Y.

FOR DRAINAGE AND UTILITY LEGEND SEE SHEET NO. 87.



REVISIONS	
NAME	DATE

**URS** 1701 GOLF ROAD, SUITE 1000 ROLLING MEADOWS, IL 60008 TEL (847) 228-0707 FAX (847) 228-1115

HOPPS ROAD/SPRING STREET DRAINAGE AND UTILITIES STA. 9+00 TO STA. 15+00

SCALE: VERT. 1" = 5' HORIZ. 1" = 20'  
DATE: 04/06/2007  
DRAWN BY:  
CHECKED BY:

DATE	
BY	
PLAN	
SURVEYED	
GRADES CHECKED	
NOTES CHECKED	
NO.	
DATE	
BY	
PLAN	
SURVEYED	
GRADES CHECKED	
NOTES CHECKED	
NO.	

DATE	
BY	
PLAN	
SURVEYED	
GRADES CHECKED	
NOTES CHECKED	
NO.	
DATE	
BY	
PLAN	
SURVEYED	
GRADES CHECKED	
NOTES CHECKED	
NO.	