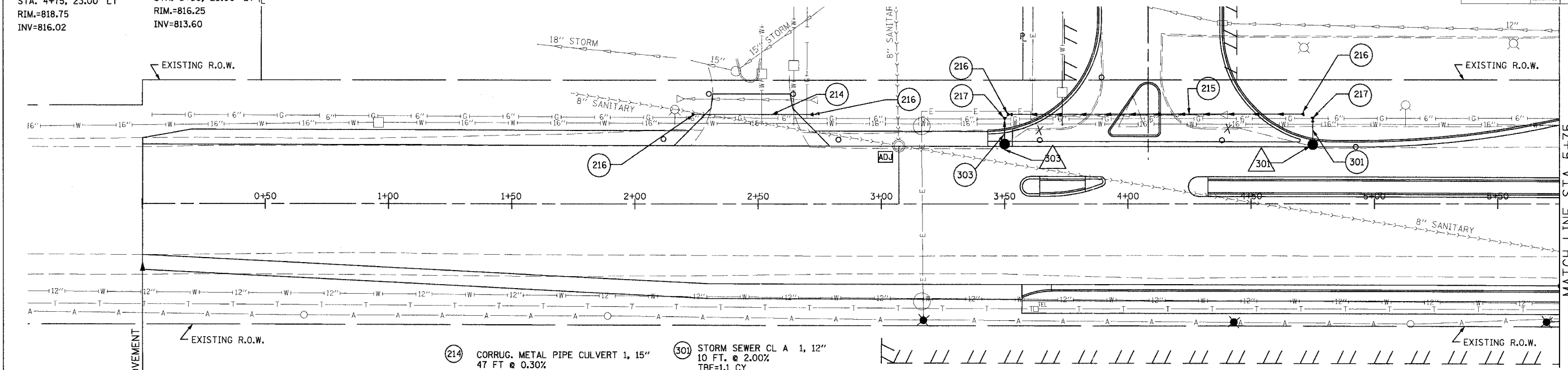


CONTRACT NO. 83737				
F.A.U. RTE.	SECTION	COUNTY	TOTAL SHEETS	SHEET NO.
250996-00094-01-WR		KANE	187	100
STA.		TO STA.		
FED. ROAD DIST. NO.		ILLINOIS FED. AID PROJECT		

301. INL. TY. B, 3' DIA.
 F&G TYPE 24
 STA. 4+75, 23.00' LT
 RIM.=818.75
 INV.=816.02

303. CB TY. C, 2' DIA.
 F&G TYPE 24
 STA. 3+50, 23.00' LT
 RIM.=816.25
 INV.=813.60



- (214) CORRUG. METAL PIPE CULVERT 1, 15"
47 FT @ 0.30%
- (215) CORRUG. METAL PIPE CULVERT 1, 15"
118 FT @ .30%
- (216) STEEL END SECTION 15"
- (217) STEEL END SECTION 12" *
- (301) STORM SEWER CL A 1, 12"
10 FT. @ 2.00%
TBF=1.1 CY
- (303) STORM SEWER CL A 1, 12"
9 FT. @ 0.50%
TBF=3.1 CY

FOR DRAINAGE AND UTILITY
LEGEND SEE SHEET NO. 87.

NOTE 1: ALL PRIVATE UTILITIES ARE TO BE
RELOCATED AND/OR ADJUSTED BY OTHERS
UNLESS STATED OTHERWISE.

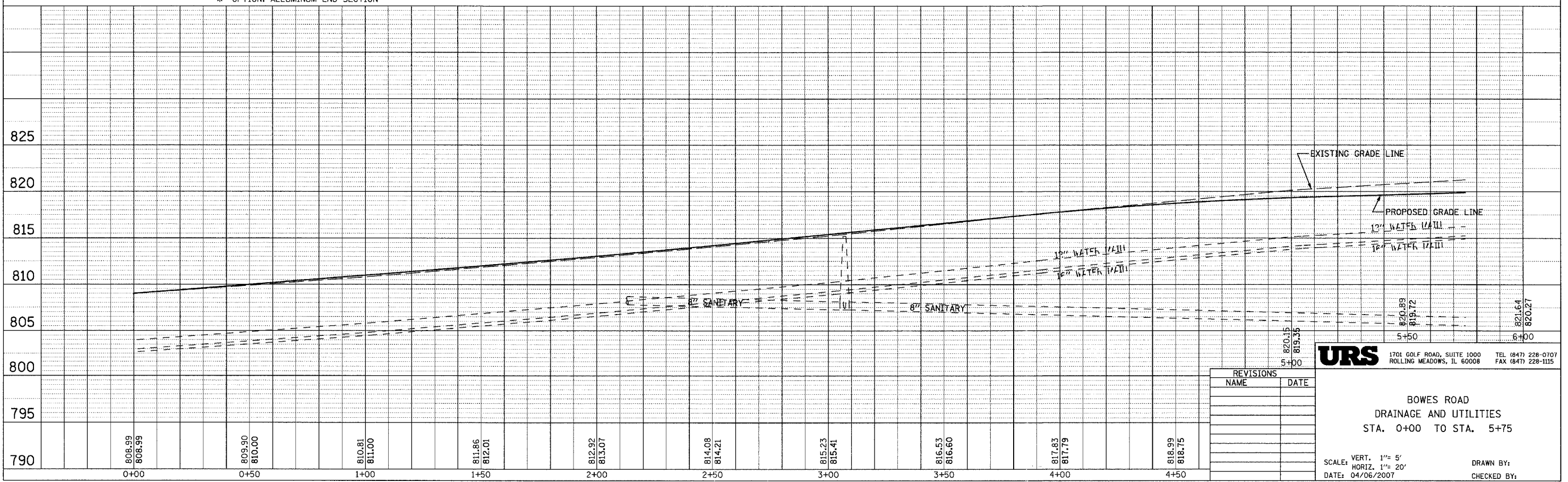
NOTE 2: CONTRACTOR SHALL BE RESPONSIBLE FOR
VERIFYING THE DEPTH AND LOCATION OF EXISTING
UTILITIES. SEE SPECIAL PROVISION REGARDING THE
COOPERATION WITH UTILITIES (LRS 1).

* OPTION: ALLUMINUM END SECTION

BOWES ROAD

PLAN	DATE	BY
SURVEYED		
NOTED		
PLOTTED		
CHECKED		
BY		
NO.		

PROFILE	DATE	BY
SURVEYED		
NOTED		
PLOTTED		
CHECKED		
BY		
NO.		



REVISIONS	
NAME	DATE

URS 1701 GOLF ROAD, SUITE 1000 TEL (847) 228-0707
 ROLLING MEADOWS, IL 60008 FAX (847) 228-1115

BOWES ROAD
 DRAINAGE AND UTILITIES
 STA. 0+00 TO STA. 5+75

SCALE: VERT. 1" = 5'
 HORIZ. 1" = 20'
 DATE: 04/06/2007
 DRAWN BY:
 CHECKED BY:

MATCH LINE STA 5+75
 SEE SHEET NO. 95