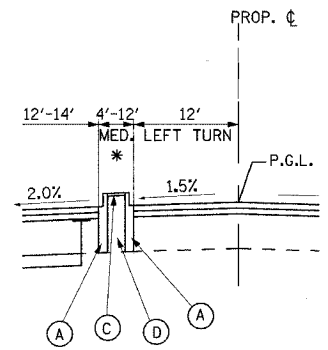
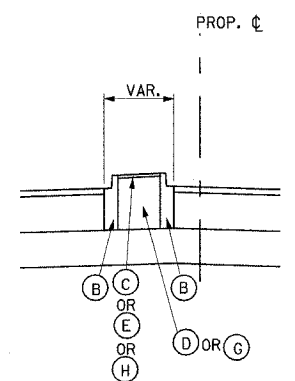


CONTRACT NO. 83737				
F.A.U. RTE.	SECTION	COUNTY	TOTAL SHEETS	SHEET NO.
2509	96-00094-01-WR	KANE	187	102
STA.		TO STA.		
FED. ROAD DIST. NO.		ILLINOIS FED. AID PROJECT		



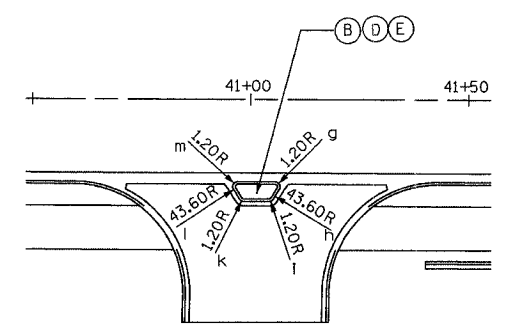
* 4' RAISED MEDIAN:
SB-6.06, STA. 9+58 TO STA. 11+66
4'-12' PAINTED MEDIAN:
STA. 5+00 TO STA. 9+58
STA. 14+81 TO STA. 15+84

RAISED MEDIAN DETAIL FOR HOPPS ROAD/SPRING STREET

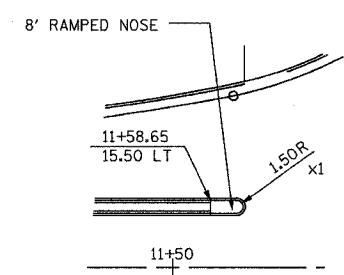


TYPICAL RAISED MEDIAN DETAIL

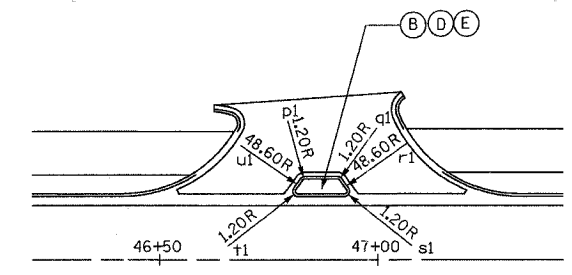
- (A) COMB. CONCRETE C&G TYPE B-6.06
- (B) COMB. CONCRETE C&G TYPE B-6.12
- (C) HMA MEDIAN SURFACE 4"
- (D) COARSE AGGREGATE FILL
- (E) CONCRETE MEDIAN SURFACE, 4"
- (F) CONCRETE CURB TYPE B
- (G) TOP SOIL
- (H) SOD



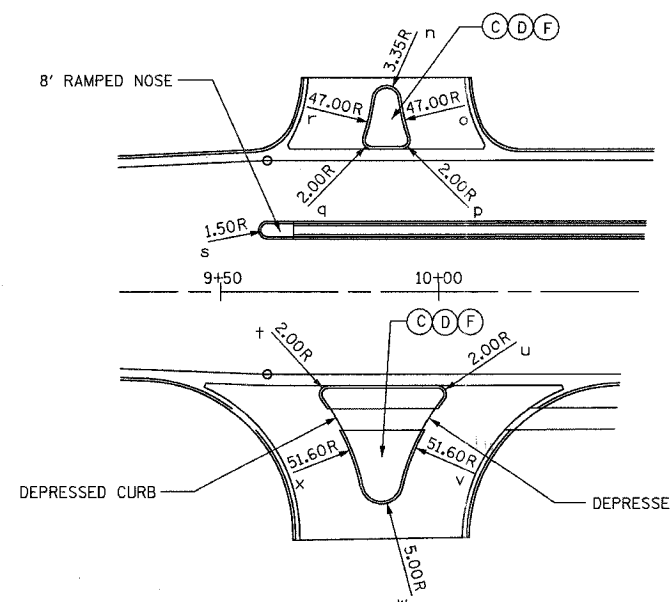
RAISED MEDIAN DETAIL FOR MCLEAN BLVD.



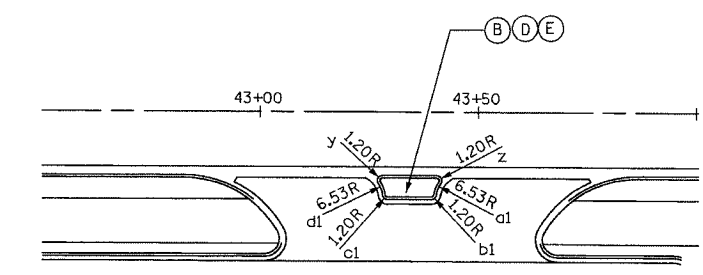
RAISED MEDIAN DETAIL FOR HOPPS ROAD/SPRING STREET



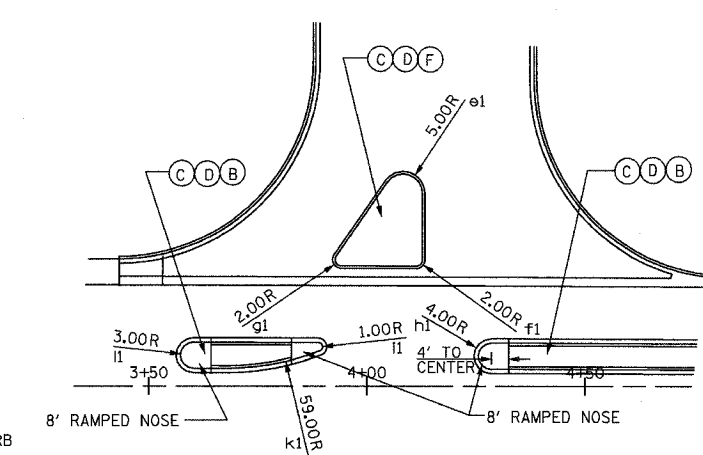
RAISED MEDIAN DETAIL FOR MCLEAN BLVD.



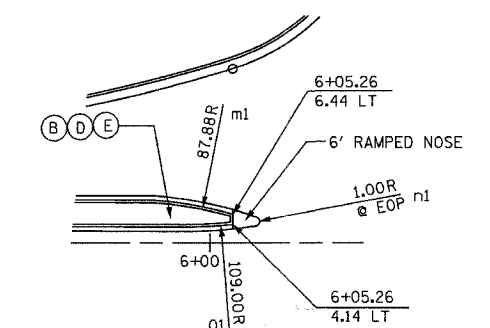
RAISED MEDIAN DETAIL FOR HOPPS ROAD/SPRING STREET



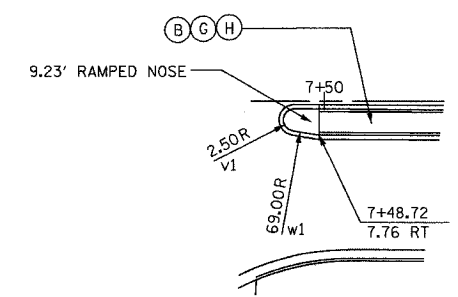
RAISED MEDIAN DETAIL FOR MCLEAN BLVD.



RAISED MEDIAN DETAIL FOR BOWES ROAD



RAISED MEDIAN DETAIL FOR BOWES ROAD



RAISED MEDIAN DETAIL FOR BOWES ROAD

CENTER	STA & OFFSET	CENTER	STA & OFFSET	CENTER	STA & OFFSET
a	NOT USED	s	+60.65, 14.00 LT	k1	3+67.84, 63.11 LT
b	NOT USED	t	+74.63, 40.60 LT	ll	+60.26, 7.13 LT
c	NOT USED	u	+99.74, 40.60 RT	m1	5+81.25, 78.09 RT
d	NOT USED	v	10+41.97, 73.60 RT	n1	+10.42, 4.80 LT
e	NOT USED	w	+86.88, 60.62 RT	o1	5+93.96, 112.54 LT
f	NOT USED	x	+9+31.54, 72.48 RT	p1	+83.25, 47.41 LT
g	+05.67, 33.20 RT	y	+28.16, 33.19 RT	q1	+90.86, 47.41 LT
h	41+43.25, 57.60 RT	z	+40.56, 33.19 RT	r1	47+32.61, 74.60 LT
i	+04.34, 35.38 RT	a1	43+46.96, 37.51 RT	s1	+92.39, 45.20 LT
k	+98.58, 35.38 RT	b1	+39.32, 36.38 RT	t1	+81.72, 45.20 LT
l	40+59.66, 57.60 RT	c1	+29.40, 36.38 RT	u1	46+41.49, 74.60 LT
m	+97.24, 33.20 RT	d1	43+21.76, 37.51 RT	v1	+64.65, 14.00 LT
n	9+87.99, 43.91 LT	e1	+08.33, 44.12 LT	w1	+7+56.76, 60.78 LT
o	10+37.91, 50.16 LT	f1	+11.33, 29.01 LT	x1	7+43.08, 4.30 RT
p	+91.44, 34.60 LT	g1	+94.18, 29.05 LT		
q	+84.50, 34.60 LT	h1	+28.53, 6.96 LT		
r	9+38.04, 50.16 LT	l1	+88.87, 9.06 LT		

NOTES:

- RADI FOR RAISED MEDIANS ARE DIMENSIONED TO THE FACE OF CURB (FOB). RETURN RADII FOR ALL STREETS ARE DIMENSIONED TO THE EDGE OF PAVEMENT (EOP). RETURN RADII FOR THE ALL PRIVATE ENTRANCES ARE DIMENSIONED TO THE BACK OF CURB (BOC). SEE ROADWAY PLANS FOR THE RETURN RADII INFORMATION FOR STREETS AND ENTRANCES.
- DO NOT SCALE THE DETAILS FROM THIS DRAWING.
- SEE IDOT STD. 606301 FOR ADDITIONAL DETAILS FOR MEDIAN AND RAMPED NOSE.

REVISIONS	
NAME	DATE

URS 100 SOUTH WACKER DRIVE
SUITE 500 CHICAGO, IL 60606 TEL (312) 939-1000 FAX (312) 939-4198

McLEAN BOULEVARD

CONSTRUCTION DETAILS ROADWAY

SCALE: DATE 04/06/2007 DRAWN BY CHECKED BY