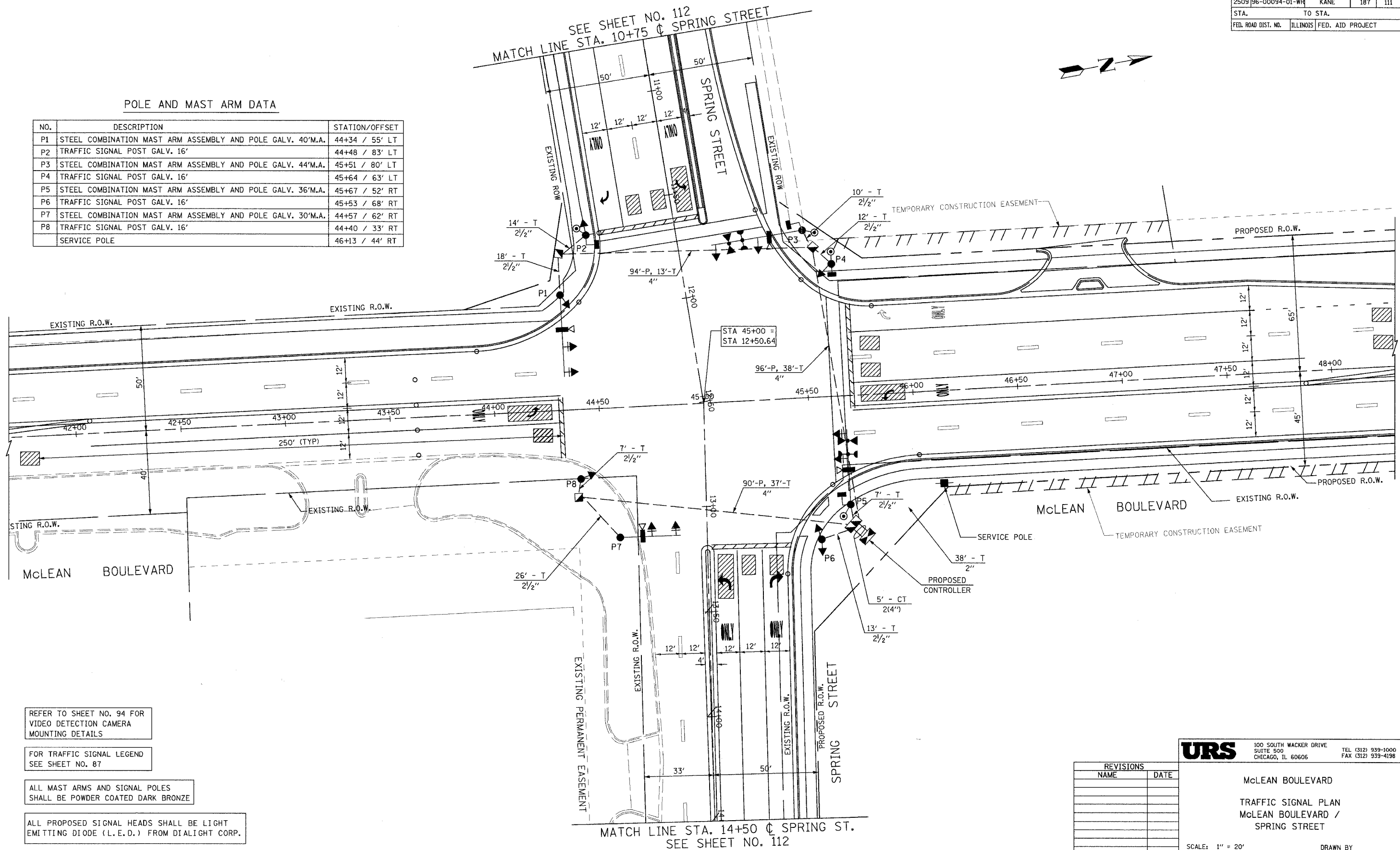


F.A.U. RTE.	SECTION	COUNTY	TOTAL SHEETS	SHEET NO.
2509	96-00094-01-WR	KANE	187	111
STA.		TO STA.		
FED. ROAD DIST. NO.		ILLINOIS FED. AID PROJECT		

POLE AND MAST ARM DATA

NO.	DESCRIPTION	STATION/OFFSET
P1	STEEL COMBINATION MAST ARM ASSEMBLY AND POLE GALV. 40'M.A.	44+34 / 55' LT
P2	TRAFFIC SIGNAL POST GALV. 16'	44+48 / 83' LT
P3	STEEL COMBINATION MAST ARM ASSEMBLY AND POLE GALV. 44'M.A.	45+51 / 80' LT
P4	TRAFFIC SIGNAL POST GALV. 16'	45+64 / 63' LT
P5	STEEL COMBINATION MAST ARM ASSEMBLY AND POLE GALV. 36'M.A.	45+67 / 52' RT
P6	TRAFFIC SIGNAL POST GALV. 16'	45+53 / 68' RT
P7	STEEL COMBINATION MAST ARM ASSEMBLY AND POLE GALV. 30'M.A.	44+57 / 62' RT
P8	TRAFFIC SIGNAL POST GALV. 16'	44+40 / 33' RT
	SERVICE POLE	46+13 / 44' RT



REFER TO SHEET NO. 94 FOR VIDEO DETECTION CAMERA MOUNTING DETAILS

FOR TRAFFIC SIGNAL LEGEND SEE SHEET NO. 87

ALL MAST ARMS AND SIGNAL POLES SHALL BE POWDER COATED DARK BRONZE

ALL PROPOSED SIGNAL HEADS SHALL BE LIGHT EMITTING DIODE (L.E.D.) FROM DIALIGHT CORP.

REVISIONS	
NAME	DATE

URS 100 SOUTH WACKER DRIVE
SUITE 500 CHICAGO, IL 60606
TEL (312) 939-1000 FAX (312) 939-4198

McLEAN BOULEVARD
TRAFFIC SIGNAL PLAN
McLEAN BOULEVARD /
SPRING STREET

SCALE: 1" = 20'
DATE 04/06/2007
DRAWN BY
CHECKED BY