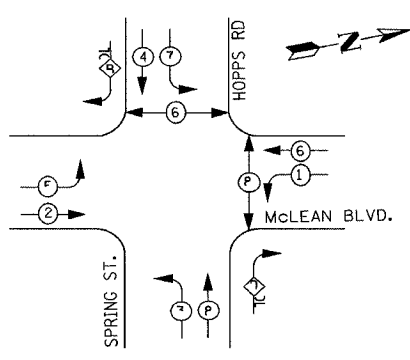


CONTRACT NO. 83737				
F.A.U. RY. NO.	SECTION	COUNTY	TOTAL SHEETS	SHEET NO.
2509	96-00094-01-WR	KANE	187	113
STA.		TO STA.		
FED. ROAD DIST. NO.		ILLINOIS FED. AID PROJECT		

CABLE PLAN LEGEND

EXISTING	PROPOSED	DESCRIPTION
		8" (200mm) TRAFFIC SIGNAL SECTION
		12" (300mm) TRAFFIC SIGNAL SECTION
		12" (300mm) PEDESTRIAN SIGNAL SECTION
		12" (300mm) PEDESTRIAN SIGNAL SECTION
		CONTROLLER CABINET
		SERVICE INSTALLATION
		TELEPHONE CONNECTION
		MAGNETIC DETECTOR
		EMERGENCY VEHICLE LIGHT DETECTOR
		CONFIRMATION BEACON
		PUSHBUTTON DETECTOR
		VEHICLE DETECTOR, INDUCTION LOOP
		VIDEO CAMERA ASSEMBLY
		SIGNAL FACE WITH BACKPLATE, "P" INDICATES PROGRAMMED HEAD
		RAILROAD CONTROL CABINET
		ILLUMINATED SIGN, L.E.D. "NO LEFT TURN"
		ILLUMINATED SIGN, L.E.D. "NO RIGHT TURN"
		GROUND ROD AT HANDHOLE (H), DOUBLE HANDHOLE (H), OR CONTROLLER (C).
		GROUND ROD AT POST (P), OR MAST ARM POLE (MA).
		GROUND ROD AT ELECTRIC SERVICE INSTALLATION
		GROUND CABLE IN CONDUIT NO. 6 SOLID COPPER (GREEN)
		FIBER OPTIC CABLE IN CONDUIT NO. 62.5/125 MM12F SM12F
		2 DENOTES NUMBER OF CONDUCTORS, ALL CABLE NO. 14 EXCEPT AS INDICATED. ALL LOOP DETECTOR CABLE TO BE SHIELDED.



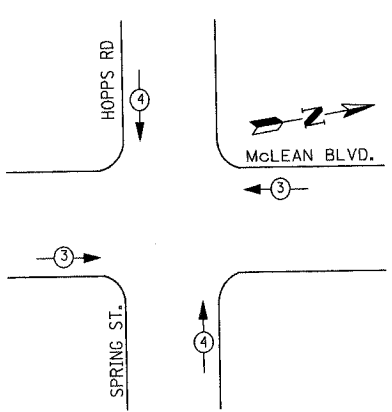
LEGEND

- DUAL ENTRY PHASE
- PEDESTRIAN PHASE
- OVERLAP
- NUMBER REFERS TO ASSOCIATED PHASE

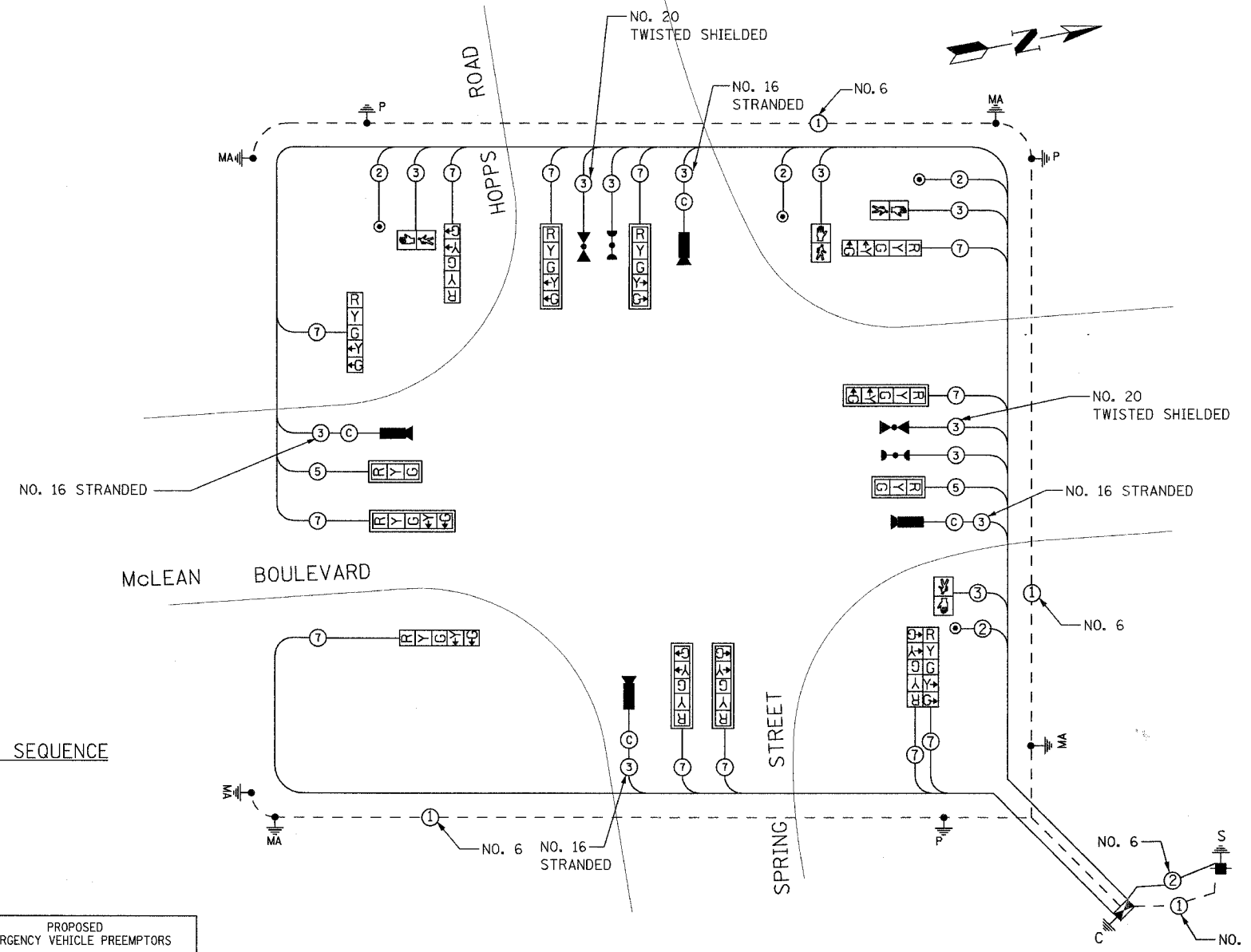
PHASE DESIGNATION DIAGRAM

OVERLAP LETTER	PERMISSIVE PHASE	PROTECTED PHASE
B	= 4	+ 5
D	= 8	+ 1

EMERGENCY VEHICLE PREEMPTION SEQUENCE



EMERGENCY VEHICLE PREEMPTOR	3	4
MOVEMENT		



CABLE PLAN

NOTES

- TRAFFIC CONTROL EQUIPMENT SHALL BE MANUFACTURED BY EAGLE
- A UPS BATTERY BACK-UP SYSTEM, ALPHA FXM100 (MANUFACTURED BY "ALPHA TECHNOLOGIES") SHALL BE INSTALLED IN THE TYPE IV CONTROLLER CABINET WITH A FX-200 EXTERNAL BATTERY ENCLOSURE. THE EXTERNAL BATTERY ENCLOSURE SHOULD MOUNT TO THE POWER PANEL SIDE OF THE TYPE IV CABINET WITH 4 SHELVES TO STORE THE BATTERIES. THE SYSTEM SHALL BE CAPABLE OF 3-HOUR MINIMUM BATTERY LIFE TO PROVIDE ONE HOUR OF FULL FUNCTIONING SIGNAL AND 2 HOURS OF FLASHING RED.
- ALL TRAFFIC SIGNAL HEADS SHALL BE L.E.D. (LIGHT EMITTING DIODE), AND MANUFACTURED BY DIALITE CORPORATION OR APPROVED EQUAL.
- ALL PEDESTRIAN TRAFFIC SIGNAL HEADS SHALL BE L.E.D. WITH COUNTDOWN FEATURE AND MANUFACTURED BY DIALITE CORPORATION OR APPROVED EQUIVALENT.
- VIDEO DETECTION SYSTEM SHALL BE MANUFACTURED BY AUTOSCOPE OR ITERIS.
- STREET LIGHTING INSTALLED AND ENERGIZED AS PART OF THE ROADWAY LIGHTING PLANS.
- MAST ARM MOUNTED STREET NAME SIGNS SHALL BE INSTALLED BY THE KANE COUNTY HIGHWAY DEPARTMENT.

THE TRAFFIC SIGNAL CONTROL EQUIPMENT FOR THIS PROJECT SHALL BE "EAGLE".

MAST ARM MOUNTED STREET NAME SIGNS SHALL BE PROVIDED ON ALL MAST ARMS

NOTE:
EQUIPMENT GROUND CONDUCTOR (GREEN COLOR CODED) SPLICE TO FRAME AND COVER IS REQUIRED FOR ALL HANDHOLES OR DOUBLE HANDHOLES THAT CARRY SIGNAL CABLES AND SERVICE CABLES.

TYPE	NO. LAMPS	WATTAGE (INCAND.)	LED	% OPERATION	TOTAL WATTAGE
SIGNAL (RED)	14	135	17	0.50	119.00
(YELLOW)	14	135	25	0.25	87.50
(GREEN)	14	135	15	0.25	52.50
ARROW	24	135	12	0.10	28.80
PED. SIGNAL	4	90	25	1.00	100.00
CONTROLLER		100	100	1.00	100.00
ILLUM. SIGN		84		0.05	
FLASHER				0.50	
ENERGY COSTS TO: TOTAL =					487.80

KANE COUNTY DEPARTMENT OF TRANSPORTATION
41W011 Burlington Road
St. Charles, IL 60175
CONTACT: MIKE LYNCH
PHONE: (847) 816-5331
COMPANY: COM. EDISON

FOUNDATION (DEPTH)	FT. (m)	CABLE SLACK	FT. (m)	VERTICAL	FT. (m)
TYPE A - POST	4 (1.2)	HANDHOLE	6.5 (2.0)	ALL FOUNDATIONS	3.5 (1.0)
D - CONTROLLER	4 (1.2)	DOUBLE HANDHOLE	13 (4.0)	MAST ARM (L) POLE	20'H-2' (6mH-0.6m)
E - M. ARM POLE		SIGNAL POST	2 (1.0)	BRACKET MOUNTED	13 (4.0)
24" (600mm)	10 (3.0)	CONTROLLER CAB.	1 (0.5)	PED. PUSHBUTTON	4 (1.2)
30" (750mm)	15 (4.6)	FIBER OPTIC	13 (4.0)	ELECTRIC SERVICE	13.5 (4.1)
		ELECTRIC SERVICE	1 (0.5)	SERVICE TO GROUND	13.5 (4.1)
		GROUND CABLE	1 (0.5)	POST MOUNTED	6 (1.8)

URS 100 SOUTH WACKER DRIVE
SUITE 500 CHICAGO, IL 60606
TEL (312) 939-1000
FAX (312) 939-4198

NAME	DATE

McLEAN BOULEVARD
CABLE PLAN AND
PHASE DESIGNATION DIAGRAM
McLEAN BLVD & SPRING ST

SCALE: N.T.S. DRAWN BY
DATE 04/06/2007 CHECKED BY