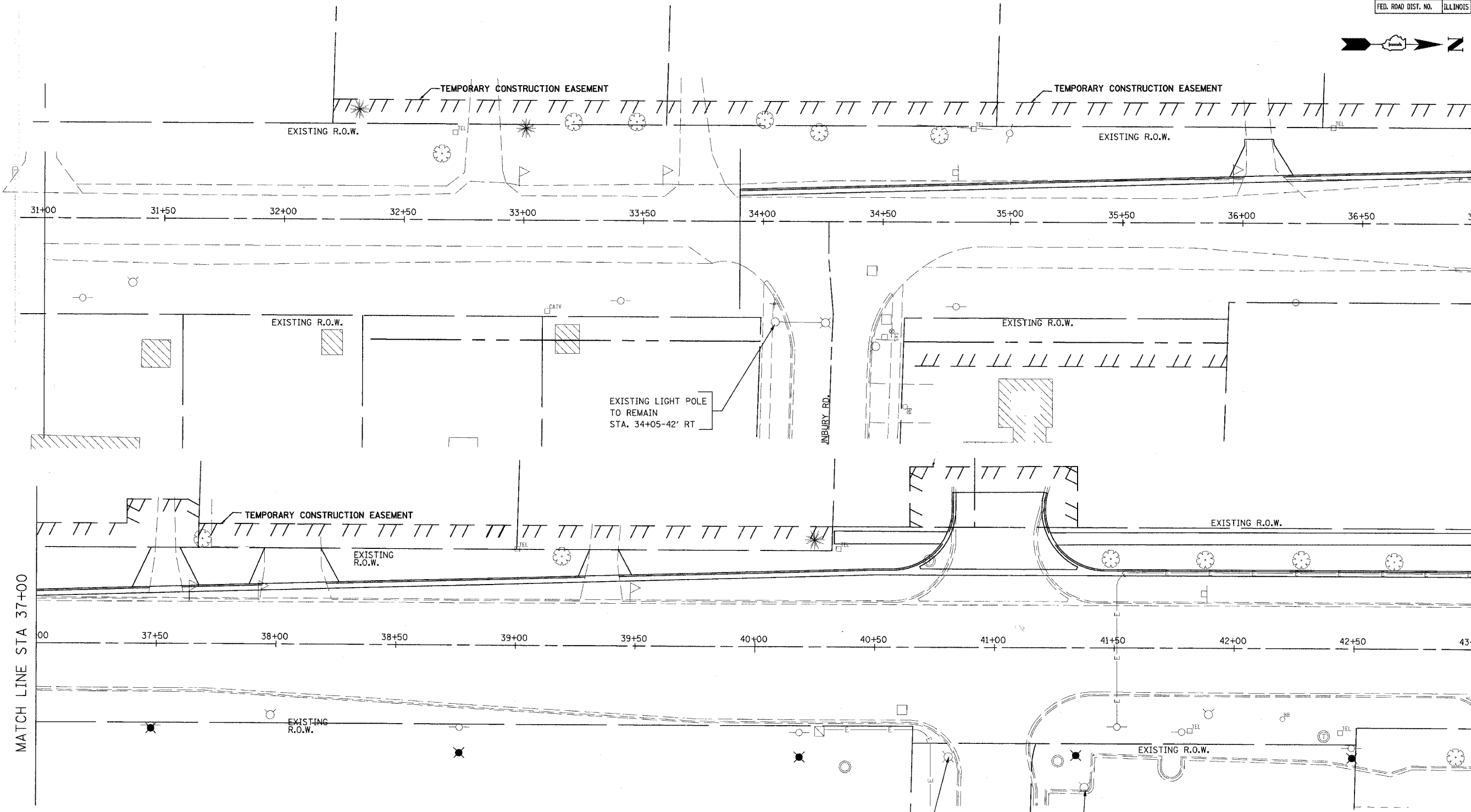


CONTRACT NO. 83737

F.A.U. RTE.	SECTION	COUNTY	TOTAL SHEETS	SHEET NO.
2509	96-00094-01-WR	KANE	187	121
STA.		TO STA.		
FED. ROAD DIST. NO.		ILLINOIS	FED. AID PROJECT	



MATCH LINE STA 37+00

MATCH LINE STA 43+00

**LEGEND**

	EXISTING LIGHT (ARM MOUNTED)
	EXISTING LIGHT (POLE MOUNTED)
	PROP. POWER POLE RELOCATION ("BY OTHERS") *

\* WORK "BY OTHERS" IS NOT A PART OF THIS CONTRACT. THIS WORK IS A PART OF DIFFERENT CONTRACT AND SHOWN HERE FOR THE INFORMATION PURPOSE ONLY. TYPICAL FOR ALL WORK PERTAINING TO "BY OTHERS."

EXISTING LIGHT POLE  
STA 40+89.9-45.5' RT  
TO BE RELOCATED  
(BY OTHERS)

EXISTING LIGHT POLE  
TO REMAIN  
STA. 40+80-45.5' RT

REVISIONS	
NAME	DATE

**URS** 100 SOUTH WACKER DRIVE  
SUITE 500 TEL (312) 939-1000  
CHICAGO, IL 60606 FAX (312) 939-4198

**McLEAN BOULEVARD**  
LIGHTING RELOCATION  
AND REMOVAL PLAN  
STA 33+90 TO STA 43+00

SCALE: 1" = 20'  
DATE 04/06/2007  
DRAWN BY KLM  
CHECKED BY