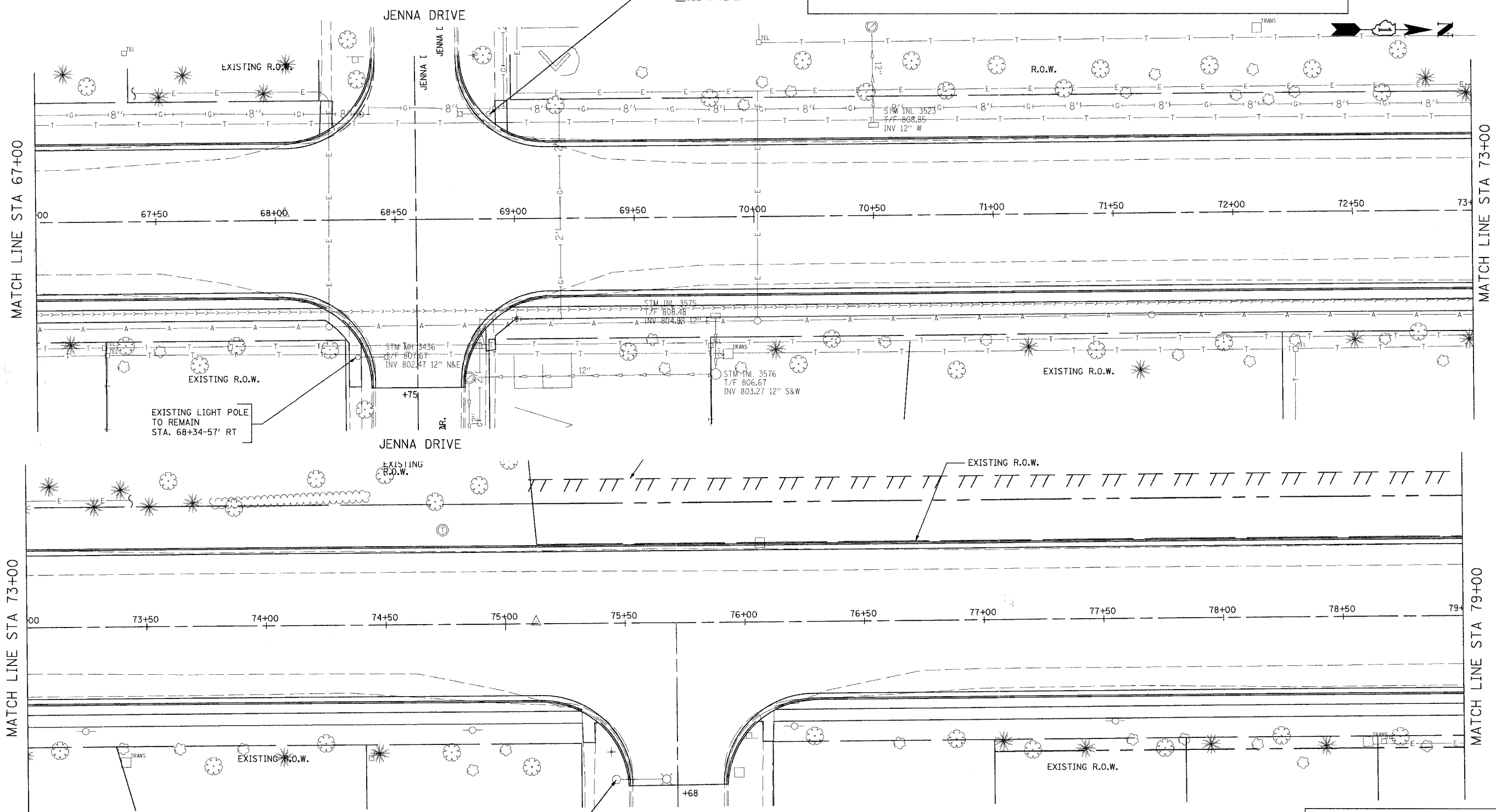


CONTRACT NO. 83737

F.A.J. RTE.	SECTION	COUNTY	TOTAL SHEETS	SHEET NO.
2509	96-00094-01-WR	KANE	187	124
STA.		TO STA.		
FED. ROAD DIST. NO.		ILLINOIS FED. AID PROJECT		

EXISTING LIGHT POLE STA. 68+89.6-44' LT TO BE RELOCATED STA 68+85-52.5' LT SEE NOTE 1.

NOTE:
1. INDIVIDUALLY CONTROLLED BY PHOTOCELL. THE COST OF INSTALLING NEW CABLE FROM THE TRANSFORMER TO THE RELOCATED LIGHTING UNIT WILL NOT BE PAID SEPARATELY. IT SHALL BE INCLUDED IN THE CONTRACT UNIT PRICE OF THE "RELOCATE EXISTING LIGHTING UNIT."



MATCH LINE STA 67+00

MATCH LINE STA 73+00

MATCH LINE STA 73+00

MATCH LINE STA 79+00

URS 100 SOUTH WACKER DRIVE
SUITE 500 CHICAGO, IL 60606
TEL (312) 939-1000 FAX (312) 939-4198

**McLEAN BOULEVARD
LIGHTING RELOCATION
AND REMOVAL PLAN
STA 67+00 TO STA 79+00**

REVISIONS	
NAME	DATE

SCALE: 1" = 20'
DATE 04/06/2007
DRAWN BY KLM
CHECKED BY

EXISTING LIGHT POLE TO REMAIN STA. 75+45.7-65' RT