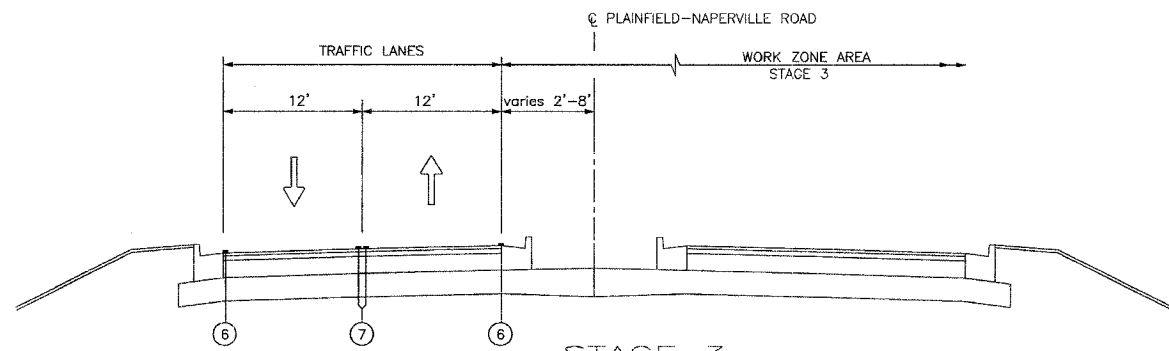
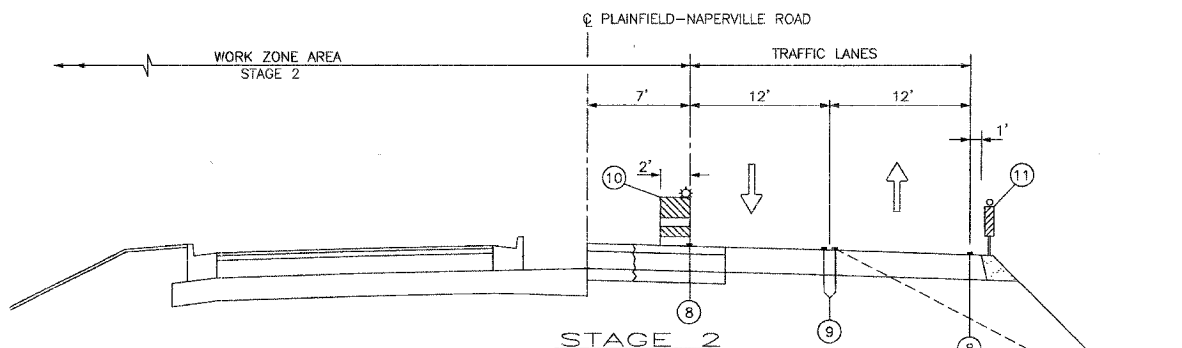


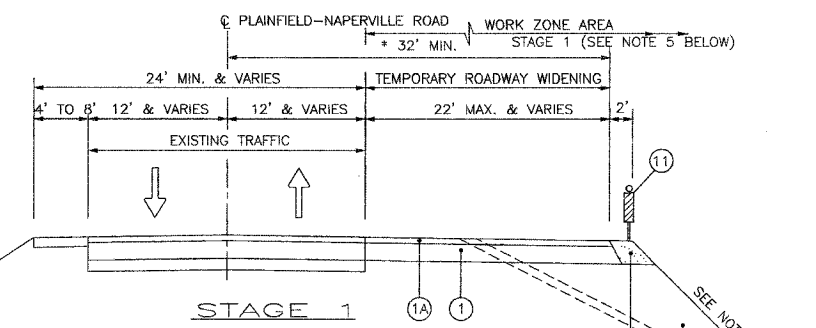
ROUTE NO.	SECTION	COUNTY	TOTAL SHEETS	SHEET NO.
FAU 2545	*	WILL	147	24
FED. AID DIST. NO. 7	ILLINOIS	FED. AID PROJECT:		
* 98-00036-19-FP			CONTRACT NO. 83896	



- STAGE 3**
- SHIFT TRAFFIC TO COMPLETED ROADWAY (SEE M.O.T. PLANS)
 - COMPLETE EAST 1/2 OF DRAINAGE
 - RECONSTRUCT EAST 1/2 OF PLAINFIELD-NAPERVILLE ROAD
 - COMPLETE DRIVEWAY AND CROSS-STREET CONNECTIONS (BUILD CONNECTIONS 1/2 AT A TIME TO MAINTAIN TRAFFIC ACCESS)



- STAGE 2**
- SHIFT TRAFFIC TO EAST TEMPORARY PAVEMENT (SEE M.O.T. PLANS)
 - COMPLETE MAIN DRAIN AND WEST 1/2 OF DRAINAGE AND STUB OUT FOR EAST CONNECTIONS
 - CONSTRUCT WEST 1/2 OF PLAINFIELD-NAPERVILLE ROAD
 - COMPLETE DRIVEWAY AND CROSS-STREET CONNECTIONS (BUILD CONNECTIONS 1/2 AT A TIME TO MAINTAIN TRAFFIC ACCESS)



* THE CONTRACTOR SHALL PROVIDE A 32'-0" MINIMUM PAVEMENT WIDTH. SOME AREAS OF EXISTING ROADWAY MAY VARY WHERE THE EXISTING N.B. LANE WIDTH IS LESS THAN 12'-0" FROM THE PROPOSED ~. IT IS STILL THE INTENTION TO PROVIDE A 32'-0" MINIMUM PAVEMENT WIDTH FROM THE PROPOSED ~ FOR STAGE 2 TRAFFIC LANES.

- CONSTRUCT RETAINING WALL STA. 158+00 TO 166+54.59 RT.
- CONSTRUCT TEMPORARY WIDENING (EAST SIDE OF PLAINFIELD-NAPERVILLE RD.)
 @ STATIONS NOTED HEREIN (SEE M.O.T. PLANS)
 STA. 70+50 - STA. 97+00 RT.
 STA. 107+00 - STA. 166+51.98 RT.
- MAINTAIN TWO-WAY TRAFFIC ON EXISTING ROADWAY
- MAINTAIN EXISTING DRAINAGE (EXTEND EXISTING CULVERTS WITH TEMPORARY PIPES) SEE NOTE 2
- RECONNECT EXISTING DRIVEWAYS AND CROSS-STREETS (USE AGGREGATE SURFACE COURSE FOR TEMPORARY ACCESS) REFER TO SPECIAL PROVISIONS FOR PAY ITEM
- SIGNING AND BARRICADING FOR STAGE 1 SHALL BE IN ACCORDANCE WITH STANDARDS 701326 & 701501.

- NOTES:**
- SLOPE VARIES. REFER TO CROSS SECTIONS FOR INTERIM GRADE LINE (2:1 MIN. OR FLATTER SLOPE).
 - THE CONTRACTOR WILL BE REQUIRED TO MAINTAIN EXISTING DRAINAGE PATTERNS DURING STAGE 1. EXISTING CULVERTS UNDER PLAINFIELD-NAPERVILLE RD. SHALL BE EXTENDED AND EXISTING CULVERTS UNDER DRIVEWAYS SHALL BE REMOVED AND RE-LAID AS NOTED ON PLANS. (REFER TO TEMPORARY WIDENING AND STAGE 1 PLANS)
 - HMA BASE COURSE SHALL BE PLACED IN ACCORDANCE WITH ARTICLE 355.08 OF THE STANDARD SPECIFICATIONS AND AS DIRECTED BY THE ENGINEER.

- LEGEND**
TEMPORARY ROADWAY WIDENING
- (1) HMA BASE COURSE, 10" (SEE NOTE NO. 3 LEFT)
 - (1A) HMA CONCRETE SURFACE COURSE, MIXTURE D, 2"
 - (2) AGGREGATE SHOULDERS, TYPE "B", 12"
 - (3) EMBANKMENT
 - (4) TOPSOIL STRIPPING, 6" (REFER TO SPECIAL PROVISIONS FOR TOPSOIL EXCAVATION AND PLACEMENT)
 - (5) TEMPORARY EROSION CONTROL SEEDING
 - (6) WHITE REFLECTORIZED PAVEMENT MARKING TAPE TYPE III, 4"
 - (7) DOUBLE YELLOW REFLECTORIZED PAVEMENT MARKING TAPE TYPE III, 4" (11" C-C)
 - (8) WHITE TEMPORARY PAINT PAVEMENT MARKING LINE, 4"
 - (9) DOUBLE YELLOW TEMPORARY PAINT PAVEMENT MARKING LINE, 4" (11" C-C)
 - (10) TYPE 1 OR TYPE II BARRICADES W/STEADY BURN LIGHTS. 50' C-C ON TANGENTS, 25' C-C ON TAPERS. (SEE NOTE 2 BELOW)
 - (11) VERTICAL PANELS @ 50' C-C @ 2:1 SLOPES

CONSTRUCTION TRAFFIC CONTROL GENERAL NOTES

- TRAFFIC CONTROL SHALL BE PERFORMED IN ACCORDANCE WITH THE STANDARD SPECIFICATIONS FOR ROAD AND BRIDGE CONSTRUCTION, ILLINOIS MANUAL ON UNIFORM TRAFFIC CONTROL DEVICES AND THE APPLICABLE HIGHWAY STANDARDS OR AS HEREIN SPECIFIED.
- THE WORK ZONE WILL BE DELINEATED AT ALL TIMES THROUGHOUT CONSTRUCTION WORK TYPE I OR BY TYPE II BARRICADES BARRICADES WITH MONODIRECTIONAL STEADY BURN LIGHTS. THE BARRICADES SHALL BE PLACED AT 50' CENTERS. BARRICADES THAT MUST BE PLACED IN EXCAVATED AREAS SHALL HAVE LEG EXTENSIONS INSTALLED SUCH THAT THE TOP OF THE BARRICADE IS IN COMPLIANCE WITH THE HEIGHT REQUIREMENTS OF STANDARD 702001.
- OPPOSING LANES OF TRAFFIC WILL BE DELINEATED AT ALL TIMES THROUGHOUT CONSTRUCTION BY TWO 4" YELLOW TEMPORARY PAVEMENT MARKING-LINES AT 11" CENTERS.
- THE COST OF FURNISHING, INSTALLING, MAINTAINING, RELOCATING AND REMOVING ALL TRAFFIC CONTROL DEVICES INCLUDING BUT NOT LIMITED TO: BARRICADES, VERTICAL PANELS, FLEXIBLE DELINEATORS, CONSTRUCTION SIGNS, WARNING LIGHTS, FLAGMEN, AND ALL OTHER MISCELLANEOUS DEVICES USED FOR THE PURPOSE OF RELOCATING OR DIRECTING TRAFFIC DURING CONSTRUCTION OF THIS IMPROVEMENT WILL BE INCLUDED IN THE CONTRACT LUMP SUM PRICE FOR TRAFFIC CONTROL AND PROTECTION.
- EXISTING TRAFFIC SIGNS SHALL BE RELOCATED FOR EACH CONSTRUCTION STAGE, BY THE CONTRACTOR.
- ACCESS TO DRIVEWAYS AND SIDE ROADS IS TO BE MAINTAINED DURING CONSTRUCTION. ANY DELAYS OR INCONVENIENCES CAUSED BY THE CONTRACTOR BY COMPLYING WITH THESE REQUIREMENTS SHALL BE CONSIDERED AS INCIDENTAL TO THE CONTRACT AND NO ADDITIONAL COMPENSATION WILL BE ALLOWED.
- ALL APPLICABLE PORTIONS OF TRAFFIC CONTROL STANDARDS, 701001, 701006, 701011, 701201, 701206, 701301, 701306, 701311, 701326, 701336, 701426, 701501, 701606, 701701 AND 702001 SHALL APPLY DURING STAGE 1, STAGE 2, AND STAGE 3, AND ALL SLB STAGES THAT ARE NOT SPECIFIED.
- THE CONTRACTOR WILL BE REQUIRED TO MAINTAIN EXISTING DRAINAGE PATTERNS DURING STAGE CONSTRUCTION.

DRAWING ID: G:\20030023 - Plainfield-Naperville Road\dwg\MOT1-Typ Sects1.dwg
 PLOT DATE: 07/08/05 - 10:29

WILL COUNTY DEPARTMENT OF HIGHWAYS			
PLAINFIELD-NAPERVILLE ROAD (C.H. 14) ROADWAY RECONSTRUCTION TEMPORARY WIDENING AND M.O.T TYPICAL SECTIONS			
McDonough Associates Inc. Engineers/Architects		DESIGNED BY: MC CHECKED BY: NUL DRAWN BY: JIF	SCALE: N.T.S.
NUL	DATE	REVISION	BY