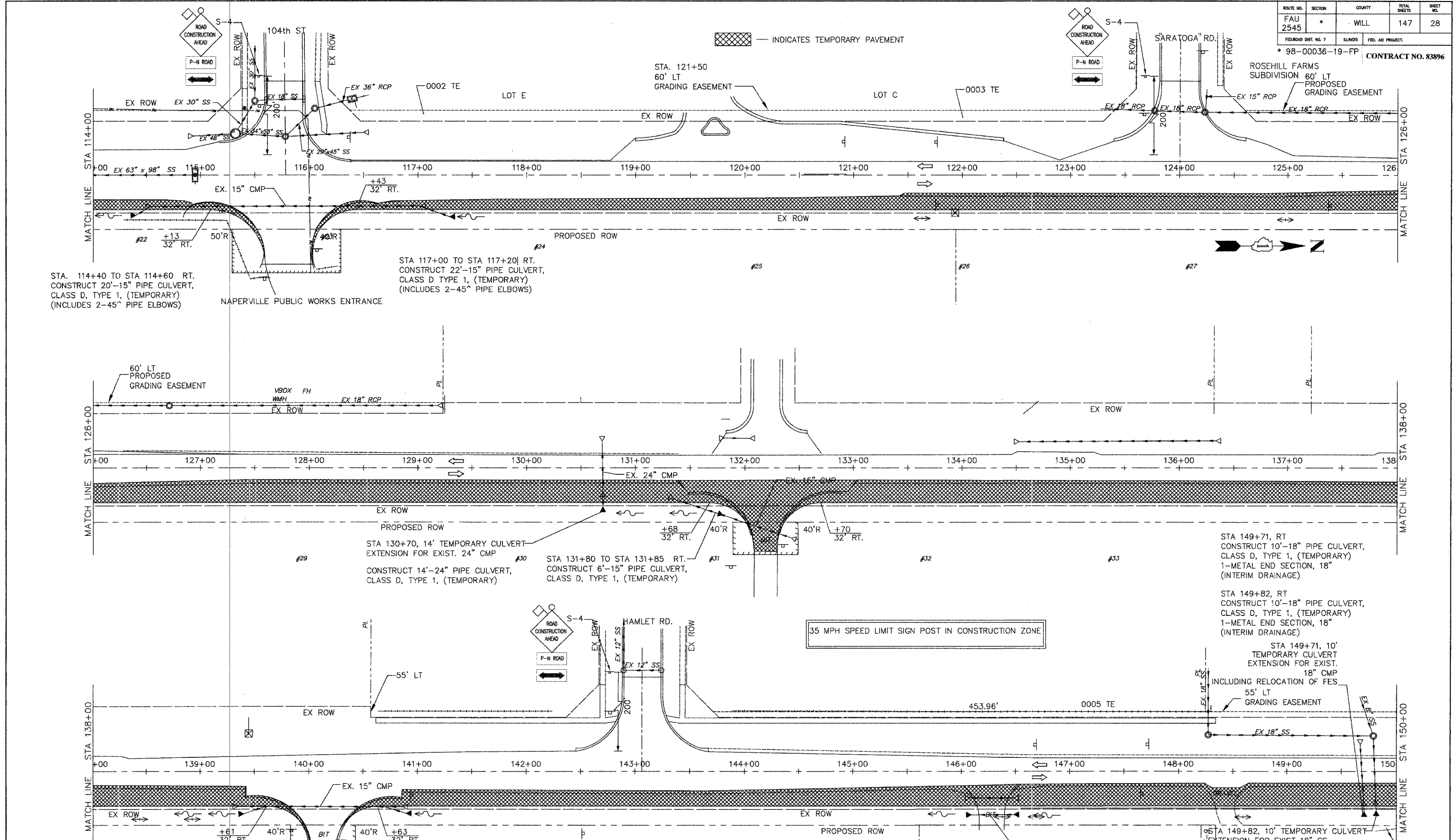


| | | | | |
|---------------------|---------|--------------------|------------------|-----------|
| ROUTE NO. | SECTION | COUNTY | TOTAL SHEETS | SHEET NO. |
| FAU 2545 | * | WILL | 147 | 28 |
| FEDERAL DIST. NO. 7 | | ILLINOIS | FED. AID PROJECT | |
| * 98-00036-19-FP | | CONTRACT NO. 83896 | | |



STA. 114+40 TO STA 114+60 RT.
CONSTRUCT 20'-15" PIPE CULVERT,
CLASS D, TYPE 1, (TEMPORARY)
(INCLUDES 2-45° PIPE ELBOWS)

STA 117+00 TO STA 117+20 RT.
CONSTRUCT 22'-15" PIPE CULVERT,
CLASS D TYPE 1, (TEMPORARY)
(INCLUDES 2-45° PIPE ELBOWS)

STA 130+70, 14' TEMPORARY CULVERT-
EXTENSION FOR EXIST. 24" CMP

STA 131+80 TO STA 131+85 RT.
CONSTRUCT 6'-15" PIPE CULVERT,
CLASS D, TYPE 1, (TEMPORARY)

STA 149+71, RT
CONSTRUCT 10'-18" PIPE CULVERT,
CLASS D, TYPE 1, (TEMPORARY)
1-METAL END SECTION, 18"
(INTERIM DRAINAGE)

STA 149+82, RT
CONSTRUCT 10'-18" PIPE CULVERT,
CLASS D, TYPE 1, (TEMPORARY)
1-METAL END SECTION, 18"
(INTERIM DRAINAGE)

STA 149+71, 10'
TEMPORARY CULVERT
EXTENSION FOR EXIST.
18" CMP
INCLUDING RELOCATION OF FES

STA 149+82, 10' TEMPORARY CULVERT-
EXTENSION FOR EXIST 18" SS
INCLUDING RELOCATION OF FES

SEE SHEET 49A FOR DETAILS
STA 139+40 TO STA 139+60 RT.
CONSTRUCT 18'-15" PIPE CULVERT,
CLASS D, TYPE 1, (TEMPORARY)
(INCLUDES 2-45° PIPE ELBOWS)

STA. 140+70 TO STA 140+90 RT.
CONSTRUCT 18'-15" PIPE CULVERT,
CLASS D, TYPE 1, (TEMPORARY)
(INCLUDES 2-45° PIPE ELBOWS)

NOTES:

- SIGNING AND BARRICADING FOR TEMPORARY ROADWAY WIDENING SHALL BE IN ACCORDANCE WITH STANDARDS 701326 AND 701501 AS APPLICABLE.
- FOR SIGN LEGEND SEE DRAWING NO. MOT2
- TEMPORARY PAINT PAVEMENT MARKINGS SHALL BE USED ON TEMPORARY PAVEMENT FOR STAGE CONSTRUCTION. (PAY FOR AS TEMPORARY PAVEMENT MARKING OF THE SIZE SPECIFIED.)
- PAVEMENT MARKING TAPE SHALL BE USED ON FINAL PAVEMENT FOR STAGE CONSTRUCTION.
- THERMOPLASTIC PAVEMENT MARKINGS SHALL BE USED FOR FINAL PAVEMENT MARKINGS.

** PAY FOR AS REMOVE AND RELAY PIPE CULVERTS, 12"

35 MPH SPEED LIMIT SIGN POST IN CONSTRUCTION ZONE

| NO. | DATE | REVISION | BY |
|-----|------|----------|----|
| | | | |
| | | | |
| | | | |

WILL COUNTY DEPARTMENT OF HIGHWAYS

PLAINFIELD-NAPERVILLE ROAD (C.H. 14)
ROADWAY RECONSTRUCTION
TEMPORARY WIDENING AND M.O.T. STAGE 1
STA 114+00 TO 150+00

McDonough Associates Inc.
Engineers/Architects

DESIGNED BY: MC
CHECKED BY: NJL
DRAWN BY: JTF

SCALE:
1" = 40'

P3
DRAWING ID: G:\20030023 - Plainfield-Naperville Road\dwg\MOT1 1-4.dwg
PLOT DATE: 07/08/05 - 10:31