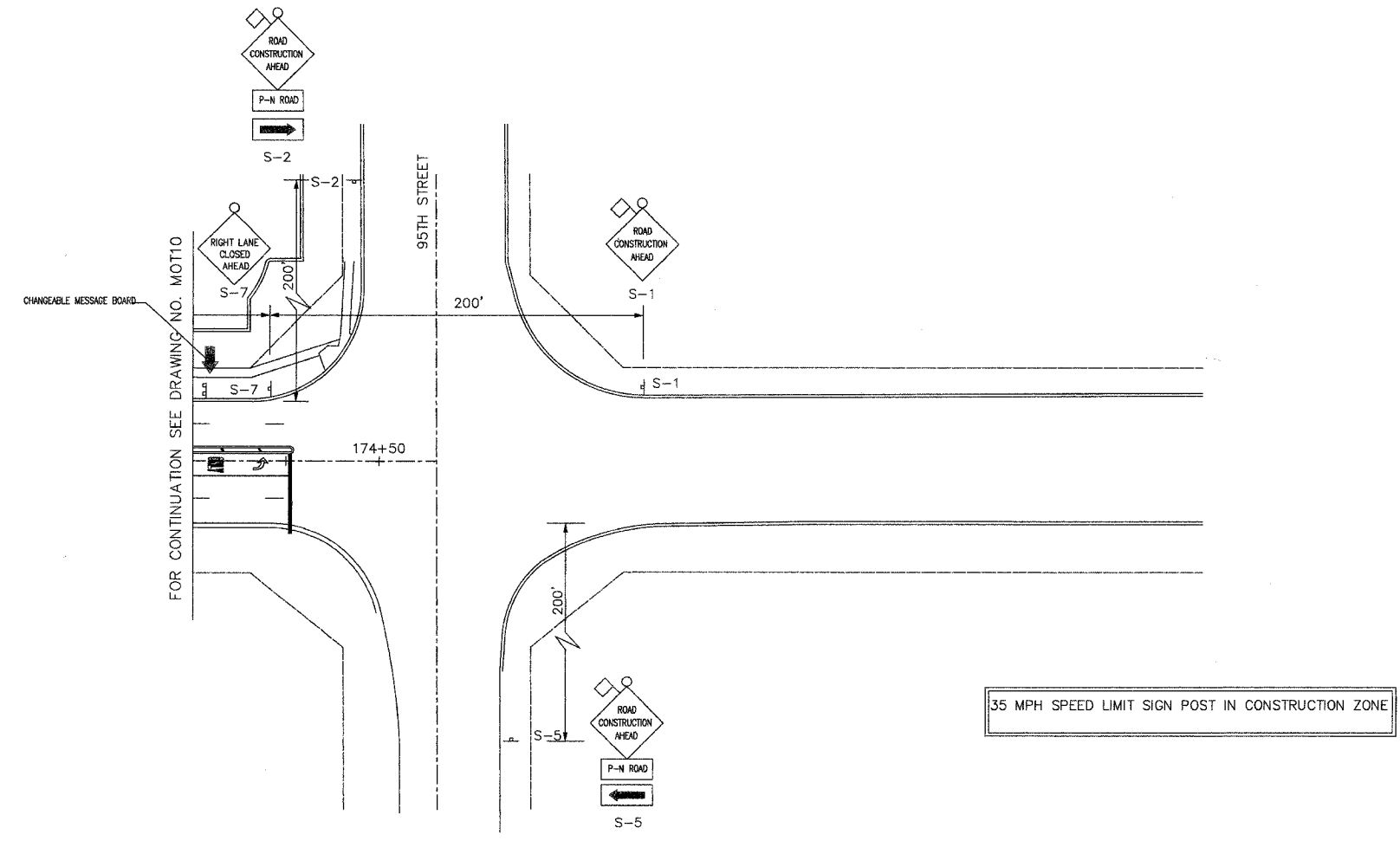


ROUTE NO.	SECTION	COUNTY	TOTAL SHEETS	SHEET NO.
FAU 2545	*	WILL	147	34
FED. ROAD DIST. NO. 7		ILLINOIS	FED. AID PROJECT.	
* 98-00036-19-FP				
CONTRACT NO. 83896				



- LEGEND**
- PLASTIC DRUMS W/STEADY BURN LIGHTS @ 25FT SPACING
  - I TYPE I OR TYPE II BARRICADES W/STEADY BURN LIGHTS @ 50' C-C ON TANGENTS; 25' C-C ON TAPERS
  - II TYPE III BARRICADES W/STEADY BURN LIGHTS
  - TRAFFIC LANE
  - ↑ TRAFFIC SIGN
  - FLASHING ARROWBOARD
  - ▨ WORK AREA
  - ↓ CHANGEABLE MESSAGE BOARD

NO.	DATE	REVISION	BY

WILL COUNTY DEPARTMENT OF HIGHWAYS PLAINFIELD-NAPERVILLE ROAD (C.H. 14) ROADWAY RECONSTRUCTION M.O.T. STAGE 2 STA 173+50 TO 95TH STREET		
McDonough Associates Inc. Engineers/Architects	DESIGNED BY: MC CHECKED BY: NJL DRAWN BY: JTF	SCALE: 1" = 40'

P4  
 DRAWING ID: G:\20030023 - Plainfield-Naperville Road\dwg\MOT2 1-4.dwg  
 PLOT DATE: 07/08/05 - 10:33