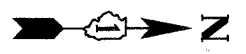
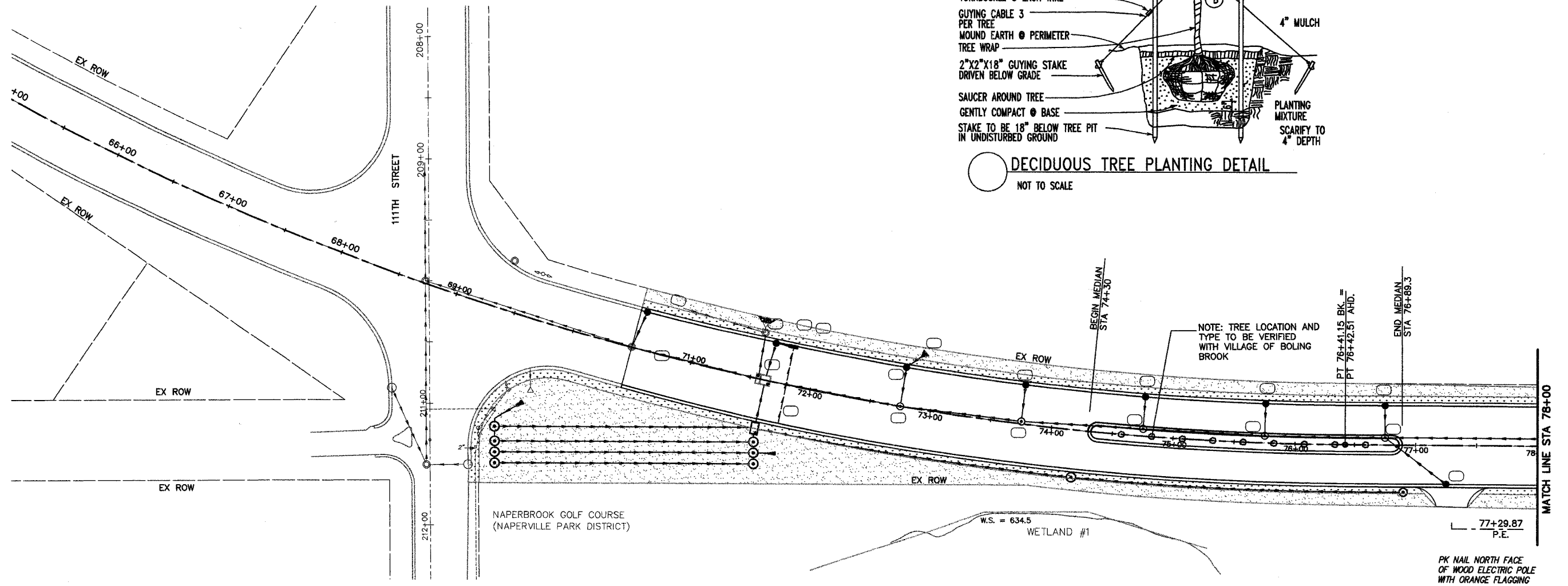
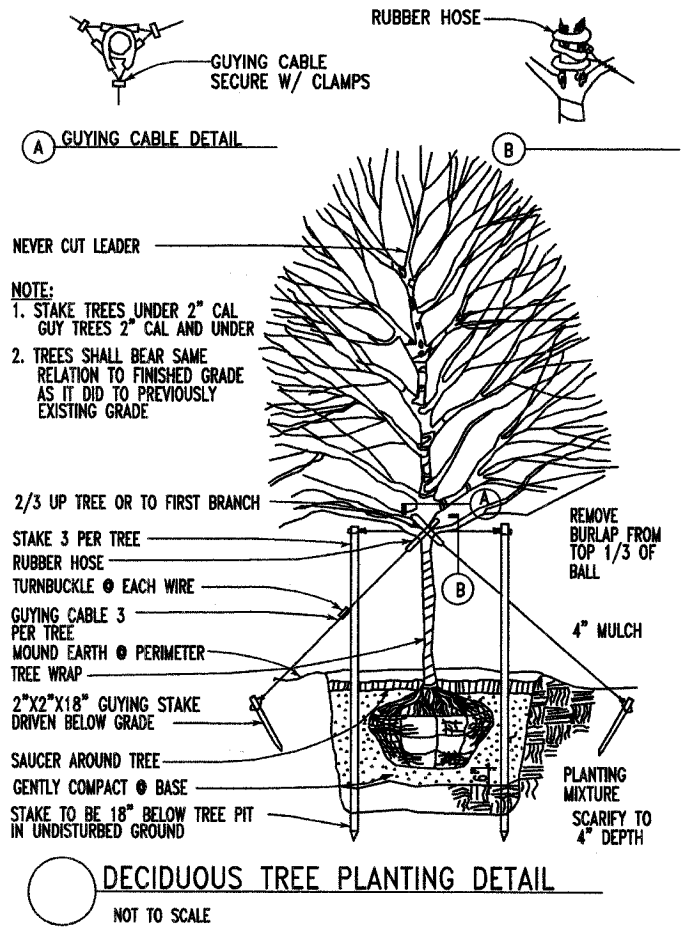


ROUTE NO.	SECTION	COUNTY	TOTAL SHEETS	SHEET NO.
FAU 2545	*	WILL	147	72
FEDERAL AID PROJ. NO. 7		CLASS	FED. AID PROJECT	
* 98-00036-19-FP		CONTRACT NO. 83896		

LEGEND

- SODDING SALT TOLERANT
- SEEDING CLASS 2A & EROSION CONTROL BLANKET
- STONE RIPRAP CLASS A5
- INLET & PIPE PROTECTION
- SEEDING CLASS 4A & EROSION CONTROL BLANKET
- TREE



NO.	DATE	REVISION	BY

WILL COUNTY DEPARTMENT OF HIGHWAYS
PLAINFIELD-NAPERVILLE ROAD (C.H. 14)
ROADWAY RECONSTRUCTION
LANDSCAPING AND EROSION CONTROL PLAN
STA 69+66 TO STA 78+00

McDonough Associates Inc.
Engineers/Architects

DESIGNED BY: JTF
CHECKED BY: NJL
DRAWN BY: JTF

SCALE:
1" = 40'

P1
DRAWING ID: C:\20030023 - Plainfield-Naperville Road\dwg\LS1-4.dwg
PLOT DATE: 06/16/05 - 10:44