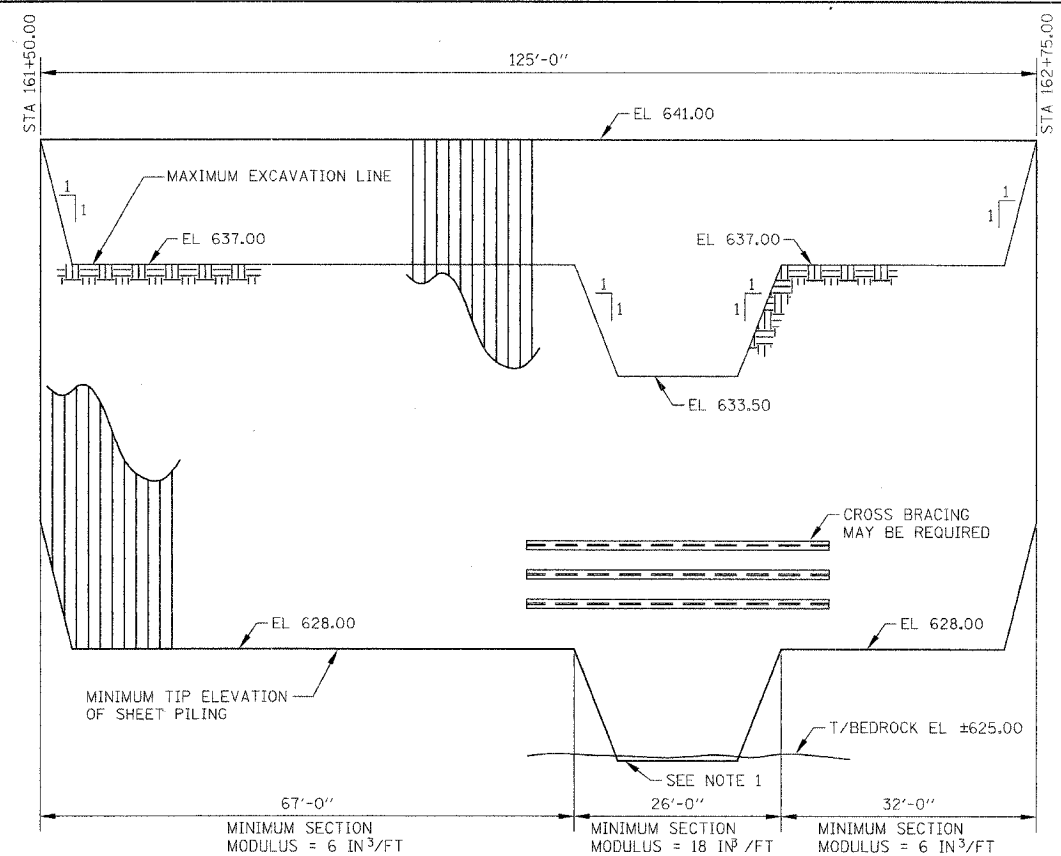
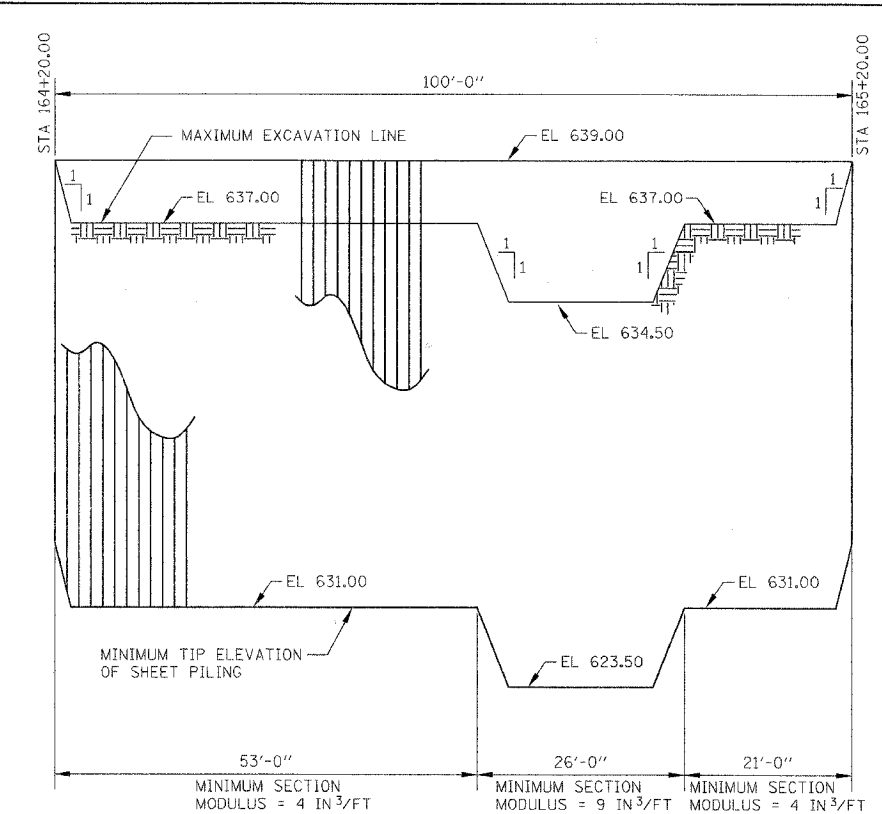


ROUTE NO.	SECTION	COUNTY	TOTAL SHEETS	SHEET NO.
FAU 2545	*	WILL	147	81
FED. ROAD DIST. NO. 7		ILLINOIS	FED. AID PROJECT	
* 98-00036-19-FP				

CONTRACT NO. 83896



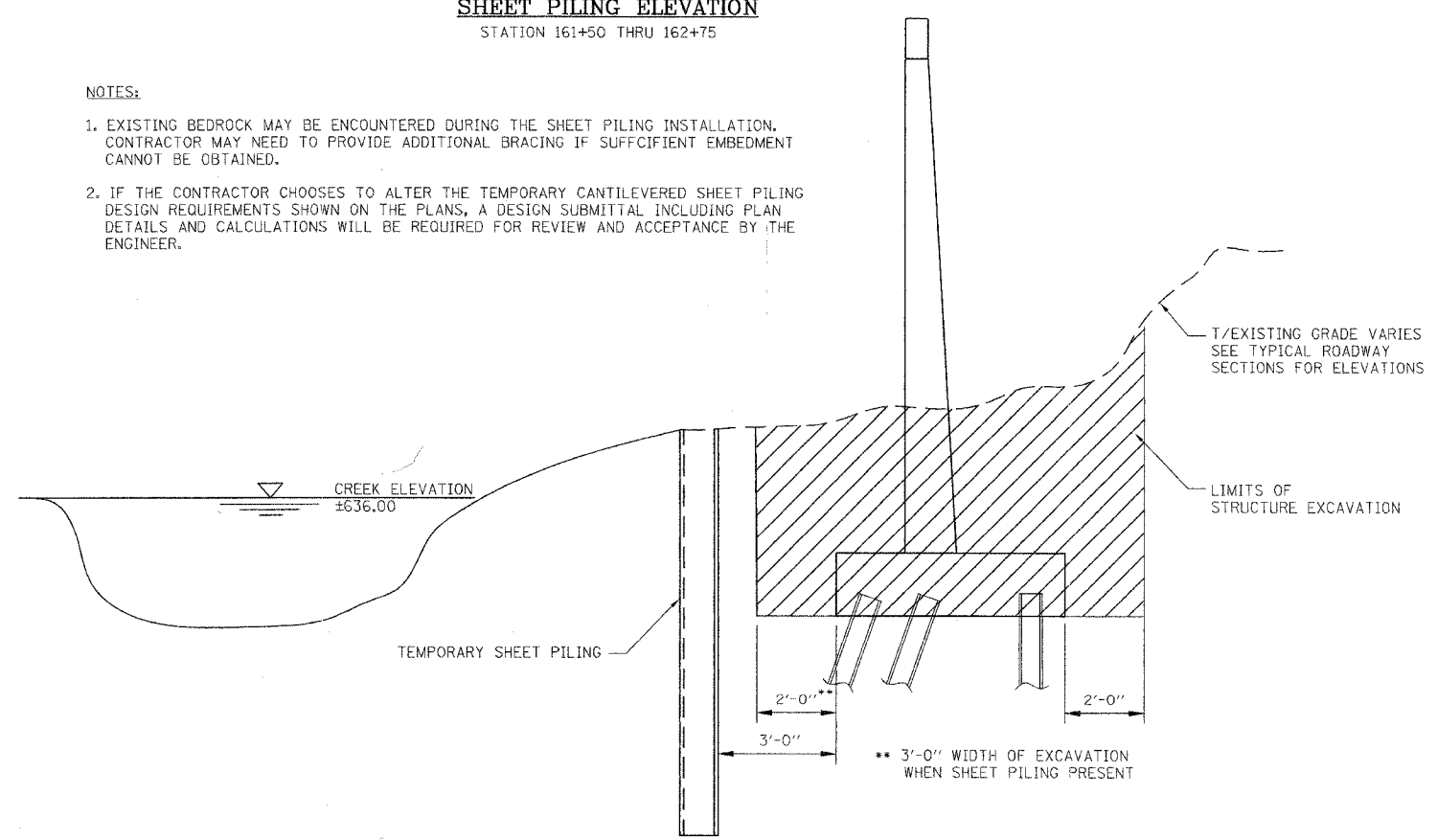
**SHEET PILING ELEVATION**  
STATION 161+50 THRU 162+75



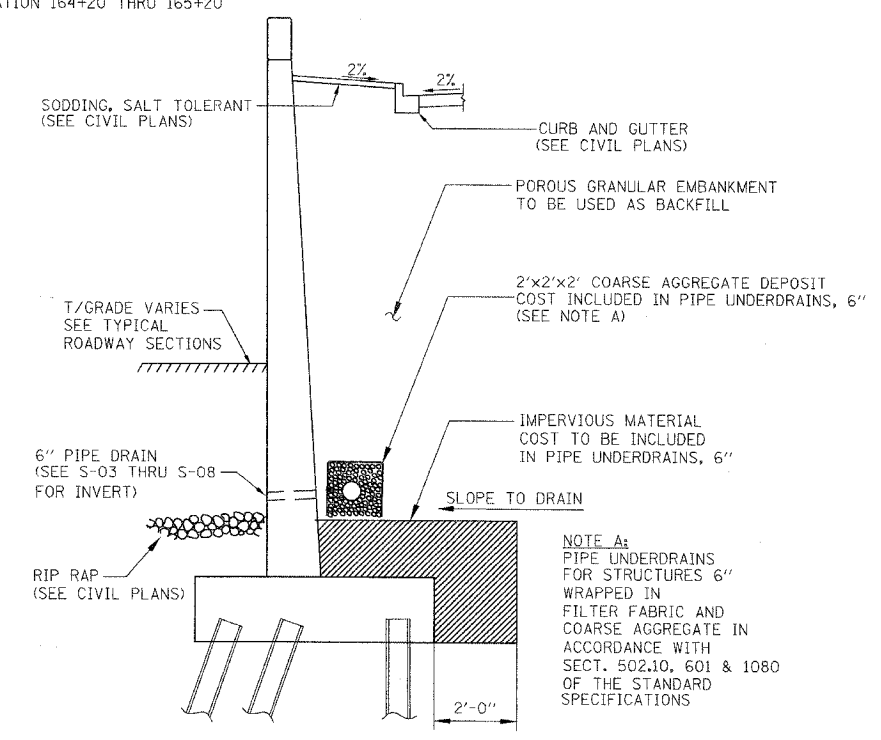
**SHEET PILING ELEVATION**  
STATION 164+20 THRU 165+20

**NOTES:**

- EXISTING BEDROCK MAY BE ENCOUNTERED DURING THE SHEET PILING INSTALLATION. CONTRACTOR MAY NEED TO PROVIDE ADDITIONAL BRACING IF SUFFICIENT EMBEDMENT CANNOT BE OBTAINED.
- IF THE CONTRACTOR CHOOSES TO ALTER THE TEMPORARY CANTILEVERED SHEET PILING DESIGN REQUIREMENTS SHOWN ON THE PLANS, A DESIGN SUBMITTAL INCLUDING PLAN DETAILS AND CALCULATIONS WILL BE REQUIRED FOR REVIEW AND ACCEPTANCE BY THE ENGINEER.



**EXCAVATION SECTION**



**TYPICAL DRAINAGE SECTION**

S-02

WILL COUNTY DEPARTMENT OF HIGHWAYS			
PLAINFIELD-NAPERVILLE ROAD (C.H. 14)			
ROADWAY RECONSTRUCTION			
RETAINING WALL			
TEMPORARY SHEET PILING AND DRAINAGE			
McDonough Associates Inc. Engineers/Architects		DESIGNED BY: JCE CHECKED BY: AWW DRAWN BY: JCE	SCALE: N.T.S.
NO.	DATE	REVISION	BY

DRAWING ID: H:\03023\STRUCT\DRAWING\DRAWING.DWG  
PLOT DATE: 12/21/06 BY: jehart