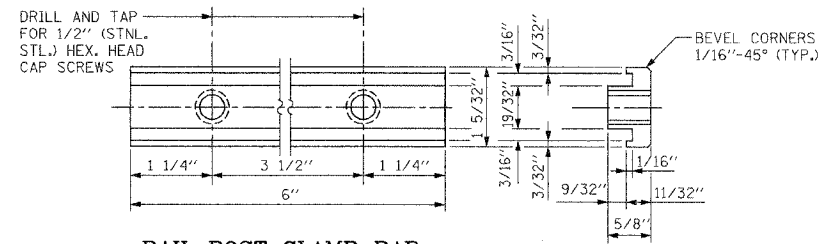
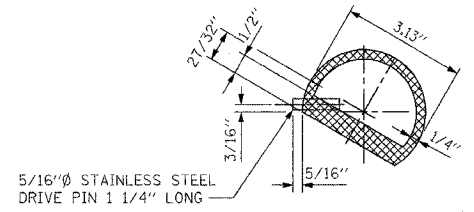


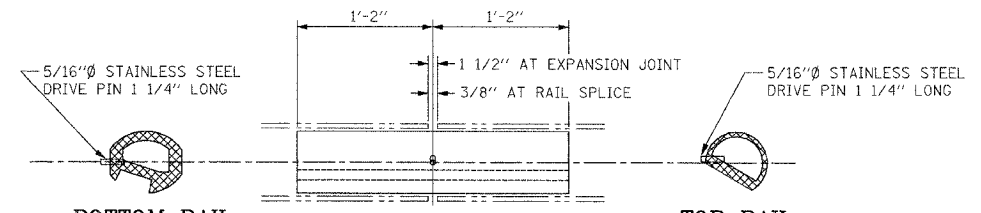
SECTION THRU TOP RAIL



RAIL POST CLAMP BAR FOR TOP RAIL



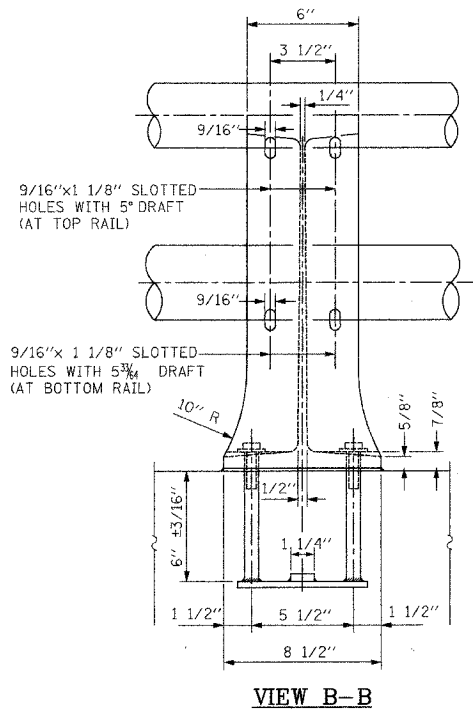
SECTION THRU SPlice TOP RAIL



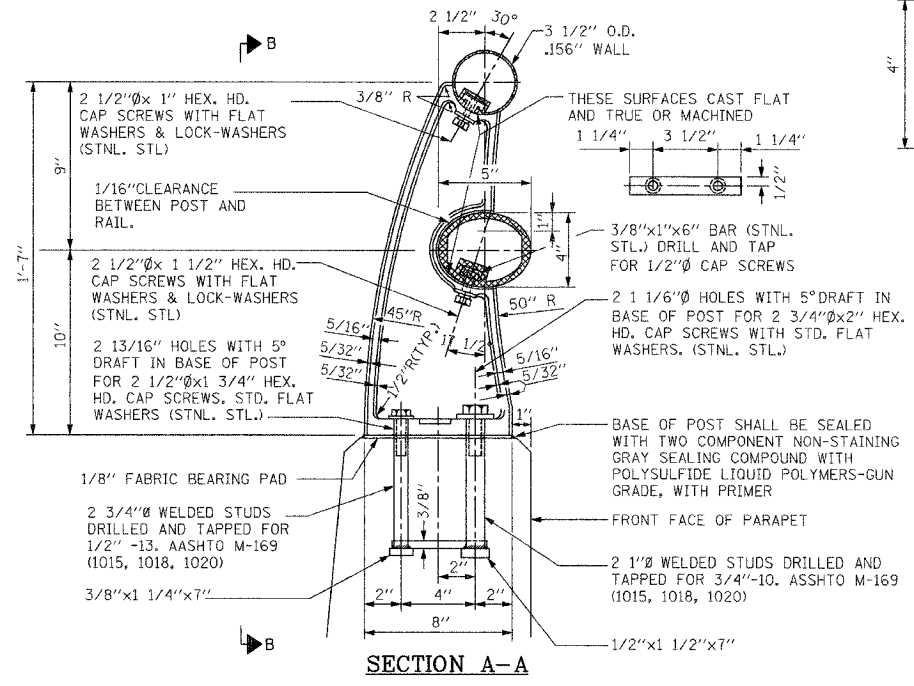
RAIL SPLICE

NOTES:

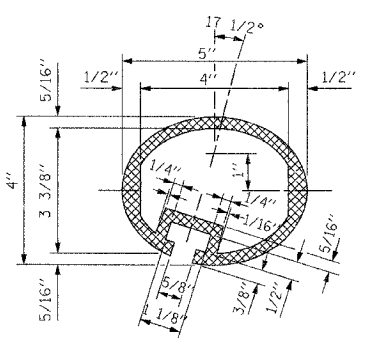
1. ALL POSTS SHALL BE NORMAL TO PARAPET.
2. ALL ALUMINUM ALLOY EXTRUDED RAIL SHALL BE SUPPLIED IN MODULAR LENGTHS OF 30 FEET, EXCEPT AT THE END OF THE BRIDGE OR OVER OPEN JOINTS IN BRIDGE DECK WHERE THE RAIL SHALL BE ATTACHED TO A MINIMUM OF 2 POSTS. IF THE RAIL IS ON A HORIZONTAL CURVE OF 2300-FOOT RADIUS OR LESS, THE MODULAR LENGTHS MAY BE REDUCED BUT SHALL BE ATTACHED TO A MINIMUM OF 2 POSTS.
3. ALL JOINTS IN RAIL SHALL BE SPLICED PER DETAIL.
4. PROVIDE 1 1/8" AND 2 1/16" ALUMINUM SHIM FOR 25% OF THE POSTS.
5. ROLL ELEMENTS SHALL BE PARALLEL TO GRADE-HIGH SPOTS WILL BE ROUND AND LOW SPOTS SHIMMED.
6. RAILING SHALL BE IN ACCORDANCE WITH SECTION 509 OF THE STANDARD SPECIFICATIONS, EXCEPT AS NOTED, AND WILL BE PAID FOR AT THE CONTRACT UNIT PRICE PER FOOT FOR ALUMINUM RAILING, TYPE L.
7. ALUMINUM ALLOY RAIL SHALL CONFORM TO ASTM B221 ALLOY 6061-T6 OR 6351-T5 WITH MIN. YIELD 35 KSI, AND ELONGATION OF 10% IN 2 INCHES.



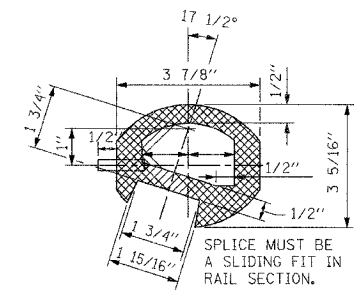
VIEW B-B



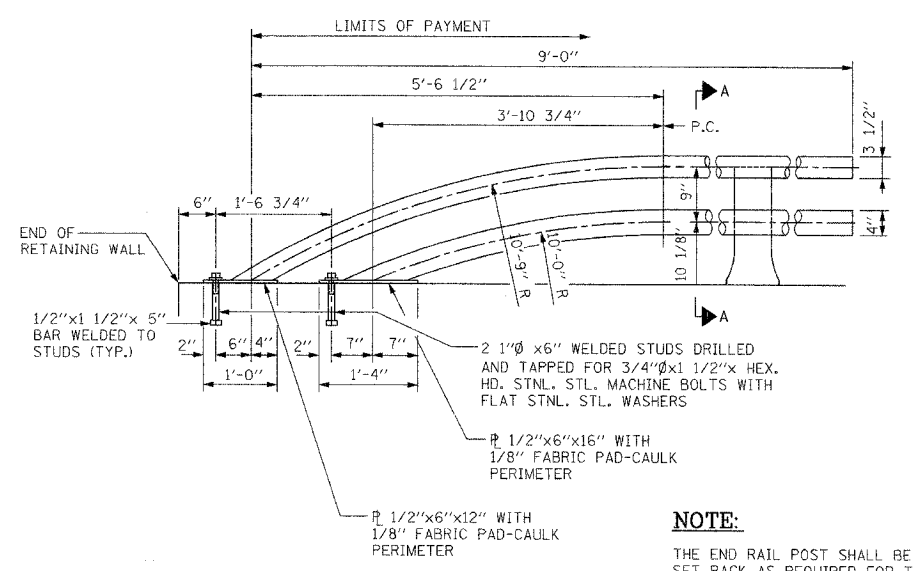
RAIL POST DETAILS



SECTION THRU ELLIPTICAL RAIL SECTION



SECTION THRU SPLICE



RAIL TERMINAL SECTION

NOTE:

THE END RAIL POST SHALL BE SET BACK AS REQUIRED FOR THE TERMINAL RAIL SECTION.

BILL OF MATERIAL

ALUMINUM RAILING, TYPE L	UNIT	TOTAL QUANTITY
	FOOT	853'

NO.	DATE	REVISION	BY

WILL COUNTY DEPARTMENT OF HIGHWAYS
PLAINFIELD-NAPERVILLE ROAD (C.H. 14)
ROADWAY RECONSTRUCTION
ALUMINUM RAILING DETAILS

McDonough Associates Inc.
Engineers/Architects

DESIGNED BY: JCE
CHECKED BY: AWW
DRAWN BY: JCE

SCALE: N.T.S.

DRAWING ID: H:\03023\STRUCT\ALUMINUM RAILING DETAILS.DWG
PLOT DATE: 12/21/06 BY: jehmart