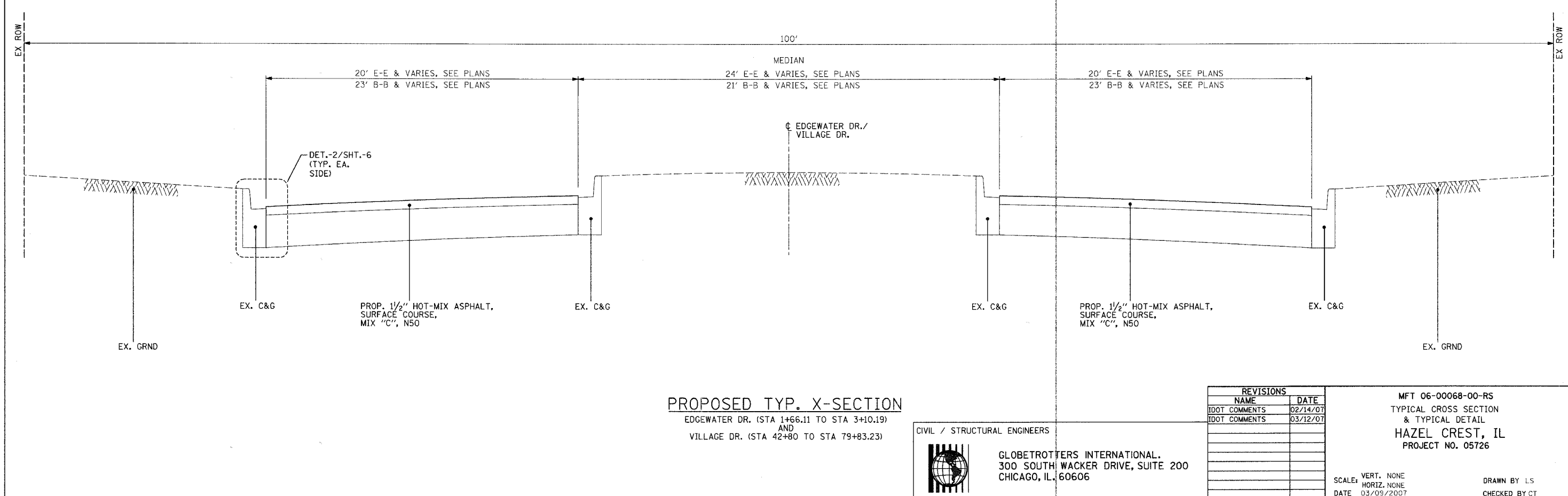
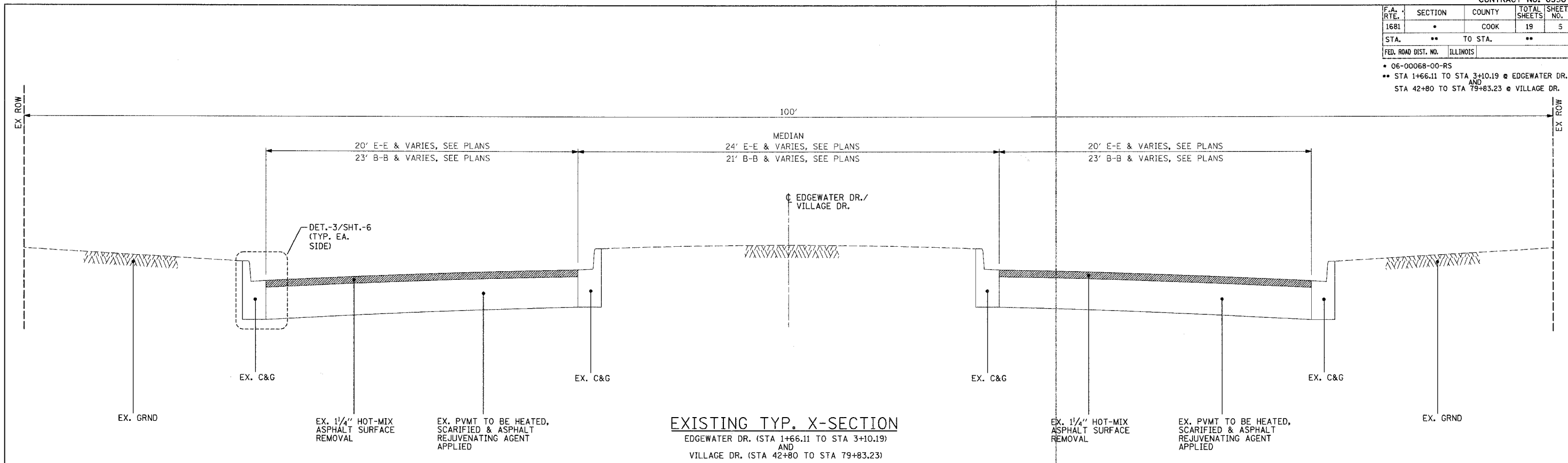


F.A. RTE.	SECTION	COUNTY	TOTAL SHEETS	SHEET NO.
1681		COOK	19	5
STA. ** TO STA. **				
FED. ROAD DIST. NO. ILLINOIS				
• 06-00068-00-RS				
•• STA 1+66.11 TO STA 3+10.19 @ EDGEWATER DR. AND				
STA 42+80 TO STA 79+83.23 @ VILLAGE DR.				




REVISIONS	
NAME	DATE
DDOT COMMENTS	02/14/07
DDOT COMMENTS	03/12/07

MFT 06-00068-00-RS  
TYPICAL CROSS SECTION  
& TYPICAL DETAIL  
HAZEL CREST, IL  
PROJECT NO. 05726

SCALE: VERT. NONE  
HORIZ. NONE  
DATE 03/09/2007

DRAWN BY LS  
CHECKED BY CT

CIVIL / STRUCTURAL ENGINEERS

 GLOBETROTTERS INTERNATIONAL.  
300 SOUTH WACKER DRIVE, SUITE 200  
CHICAGO, IL, 60606

PLOT DATE = 03/09/2007  
 PLOT SCALE = 3/8"=1'-0"  
 SHEET SIZE = 36"x24" (IN)