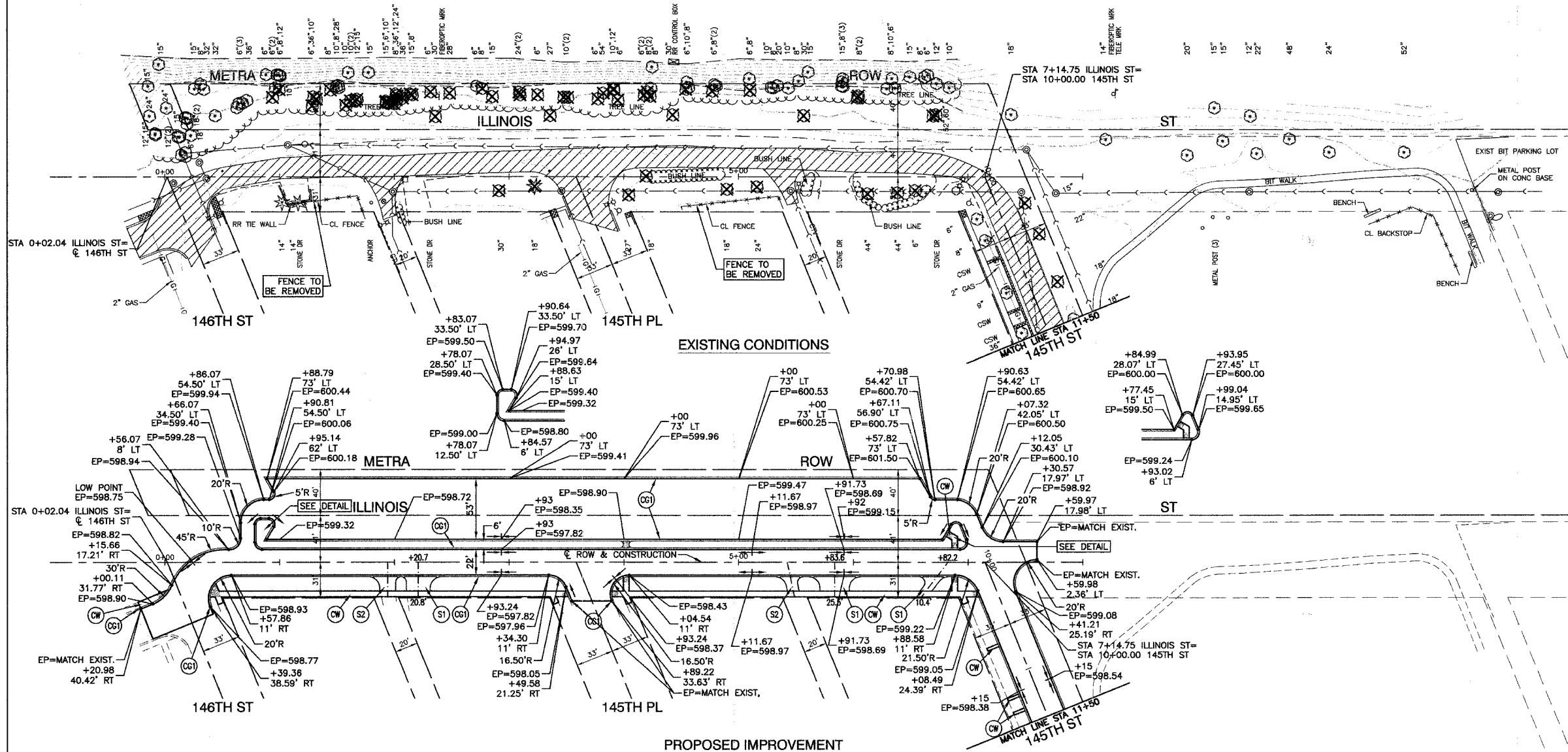
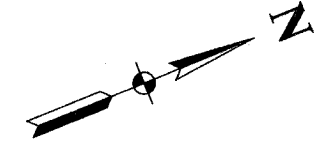


| | | | | |
|---------------------|---------------|------------------|--------------|-----------|
| F. A. L. NO. | SECTION | COUNTY | TOTAL SHEETS | SHEET NO. |
| 03-00108-00-PK | COOK | 025 | 010 | |
| STA. 0+00 | TO STA. 11+50 | | | |
| FED. ROAD DIST. NO. | ALIAS | FED. AID PROJECT | | |

CONTRACT NO. 83912

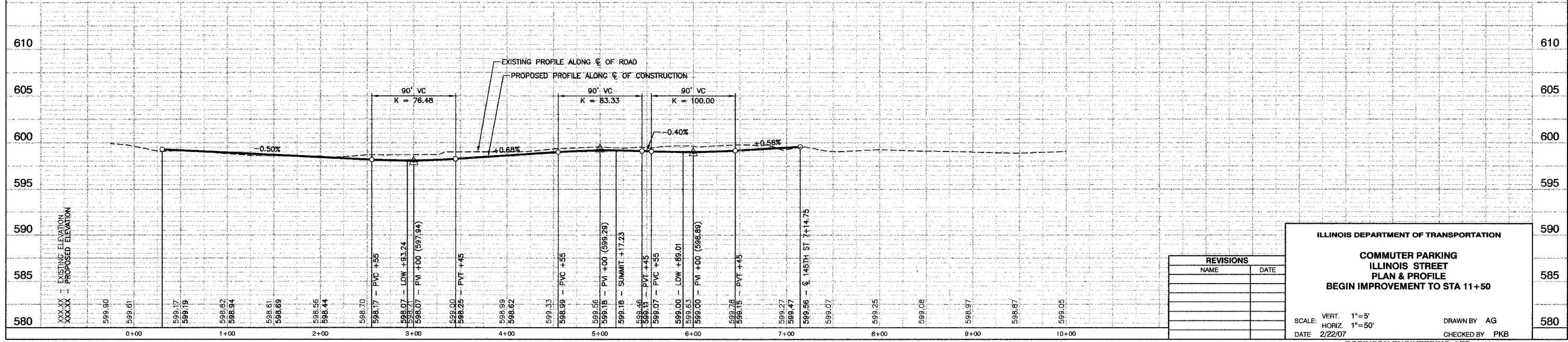


LEGEND

- ⊗ TREE TO BE REMOVED
- CONC CURB AND GUTTER REMOVAL
- ▨ BITUMINOUS PAVEMENT REMOVAL (PAID AS EARTH EXCAVATION)
- ▩ CONCRETE REMOVAL
- DETECTABLE WARNINGS
- ⊙ P.C.C. SIDEWALK, 5"
- ⊙ P.C.C. DRIVEWAY, 8"
- ⊙ HOT-MIX ASPHALT DRIVEWAY
- ⊙ HOT-MIX ASPHALT BASE COURSE, 6"
- ⊙ HOT-MIX ASPHALT SURFACE COURSE, MIX "C", N50, 2"
- ⊙ ALLEY
- ⊙ HOT-MIX ASPHALT BASE COURSE, 6"
- ⊙ HOT-MIX ASPHALT SURFACE COURSE, MIX "C", N50, 2"
- ⊙ C & G TYPE B-6.12
- ⊙ 10' TRANSITION FROM C & G TYPE B-6.12 TO EXISTING CURB AND GUTTER

NOTE:
DETECTABLE WARNINGS SHALL BE INSTALLED PER HIGHWAY STANDARD 424001 AT ALL STREET CROSSINGS WHERE SIDEWALK IS REPLACED.

BENCH MARK
SQUARE CUT IN BACK OF WALK AT ALLEY RETURN AT THE NORTHEAST CORNER OF RESIDENCE #14501 SCHOOL STREET.
ELEVATION = 598.71 NGVD 29 (FEMA)



| REVISIONS | |
|-----------|------|
| NAME | DATE |
| | |
| | |
| | |

ILLINOIS DEPARTMENT OF TRANSPORTATION

**COMMUTER PARKING
ILLINOIS STREET
PLAN & PROFILE
BEGIN IMPROVEMENT TO STA 11+50**

SCALE: VERT. 1"=5'
HORIZ. 1"=50'

DATE 2/22/07

DRAWN BY AG
CHECKED BY PKB