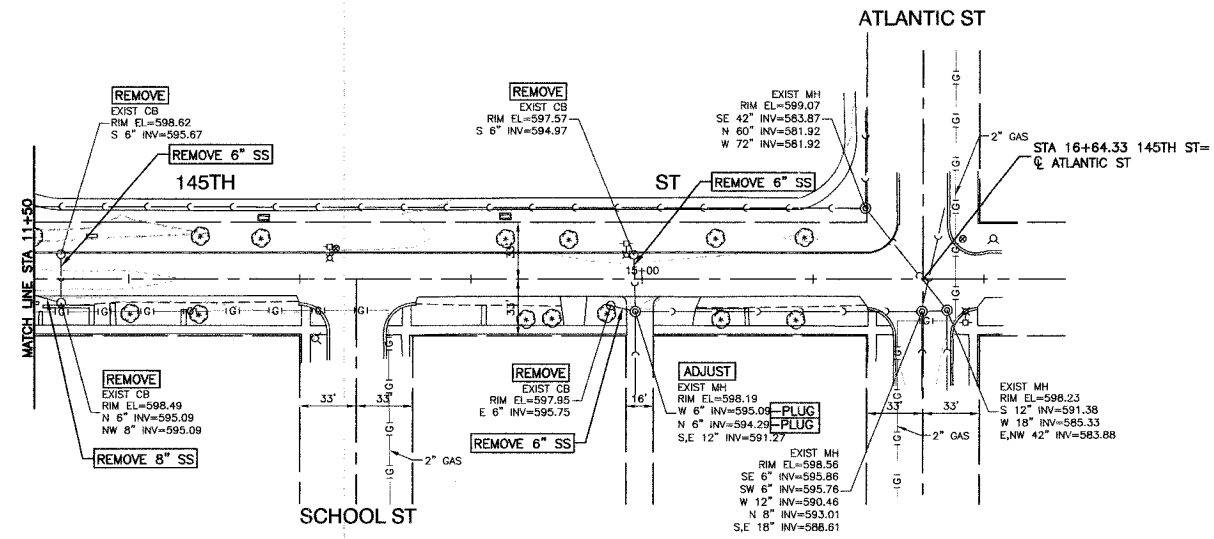


SECTION 4, TOWNSHIP 36, RANGE 14

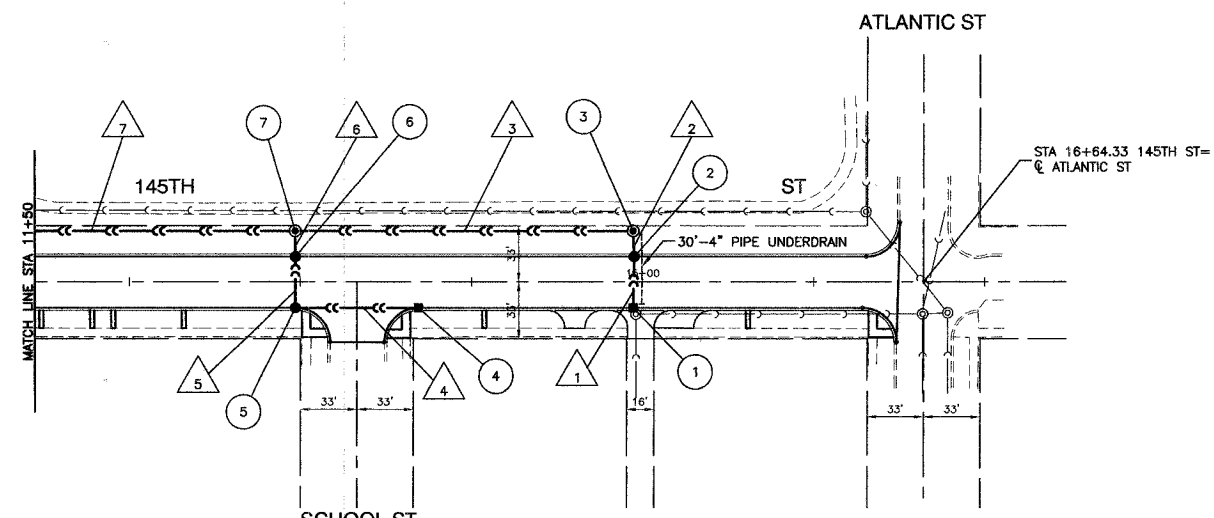
F.A.S. NO.	SECTION	COUNTY	TOTAL SHEETS	SHEET NO.
03-00108-00-PK	COOK	025	013	
STA. 11+50		TO STA. 17+64.33		
FED. ROAD DIST. NO.	ILLINOIS	FED. AID PROJECT		

CONTRACT NO. 83912



EXISTING CONDITIONS

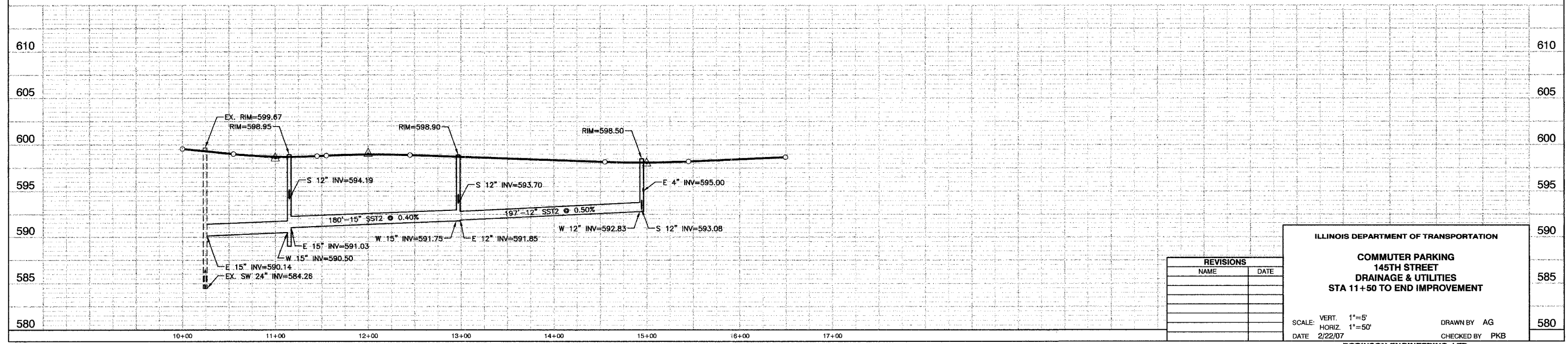
- 1 STA. 14+94.51, 15'RT
INLET TA T11F&G
RIM ELEV=597.72
N 12" INV=594.12
- 2 STA. 14+95, 15'LT
CB TA 4'DIA. T11F&G
RIM ELEV=597.72
N-S 12" INV=593.15
- 3 STA. 14+94.51, 30'LT
MH TA 4'DIA. T1F CL
RIM ELEV=598.50
SE 4" INV=595.00
S 12" INV=593.08
W 12" INV=592.83
- 4 STA. 13+69.09, 15'RT
INLET TA T11F&G
RIM ELEV=598.16
W 12" INV=594.49
- 5 STA. 12+97, 15'RT
CB TA T11F&G
RIM ELEV=598.42
E-N 12" INV=594.17
- 6 STA. 12+97, 15'LT
CB TA 4'DIA. T11F&G
RIM ELEV=598.58
S-N 12" INV=593.89
- 7 STA. 12+97, 30'LT
MH TA 4'DIA. T1F CL
RIM ELEV=598.90
S 12" INV=593.70
E 12" INV=591.85
W 15" INV=591.75



PROPOSED IMPROVEMENT

- 1 30'-12" SST2 @ 3.2% (6.0)
- 2 15'-12" SST2 @ 0.50% (1.0)
- 3 197'-12" SST2 @ 0.50% (0)
- 4 72'-12" SST1 @ 0.44% (13.2)
- 5 30'-12" SST2 @ 0.93% (7.1)
- 6 15'-12" SST2 @ 1.26% (1.1)
- 7 180'-15" SST2 @ 0.40% (0)

BENCH MARK
 SQUARE CUT IN BACK OF WALK AT ALLEY RETURN
 AT THE NORTHEAST CORNER OF RESIDENCE #14501
 SCHOOL STREET.
 ELEVATION = 598.71 NGVD 29 (FEMA)



REVISIONS	
NAME	DATE

ILLINOIS DEPARTMENT OF TRANSPORTATION

**COMMUTER PARKING
 145TH STREET
 DRAINAGE & UTILITIES
 STA 11+50 TO END IMPROVEMENT**

SCALE: VERT. 1"=5'
 HORIZ. 1"=50'
 DATE 2/22/07

DRAWN BY AG
 CHECKED BY PKB

ROBINSON ENGINEERING, LTD.
 17000 SOUTH PARK AVENUE SOUTH HOLLAND, ILLINOIS 60473
 (708) 551-6700 FAX (708) 591-0800
 ILLINOIS DESIGN FIRM REGISTRATION NO. 150011228 04185-STRM-01