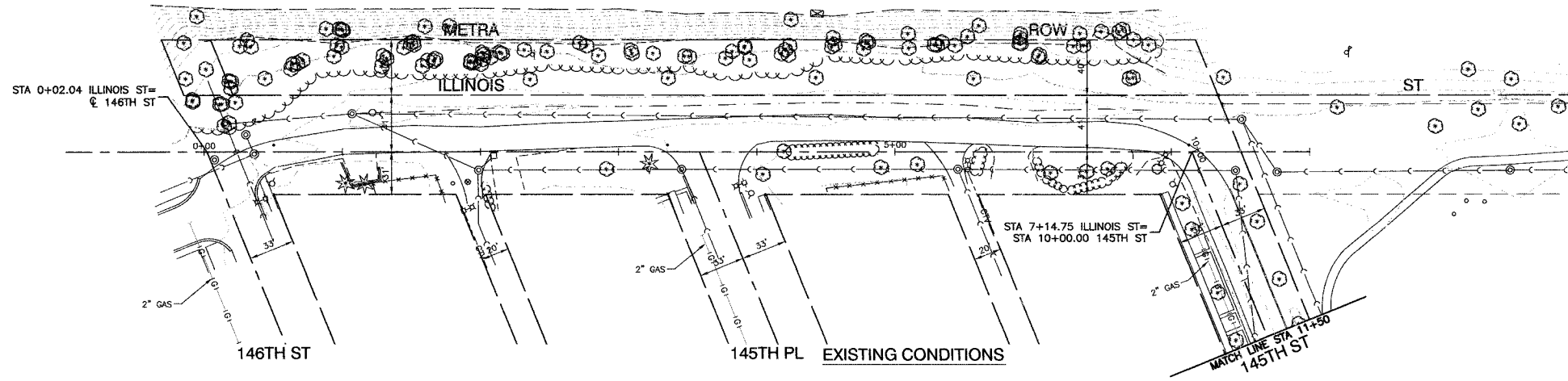


SECTION 4, TOWNSHIP 36, RANGE 14

F.A.S. NO.	SECTION	COUNTY	TOTAL SHEETS	SHEET NO.
03-00108-00-PK	COOK	025	014	
STA.	TO STA.			
FED. ROAD DIST. NO.	ILLINOIS	FED. AID PROJECT		

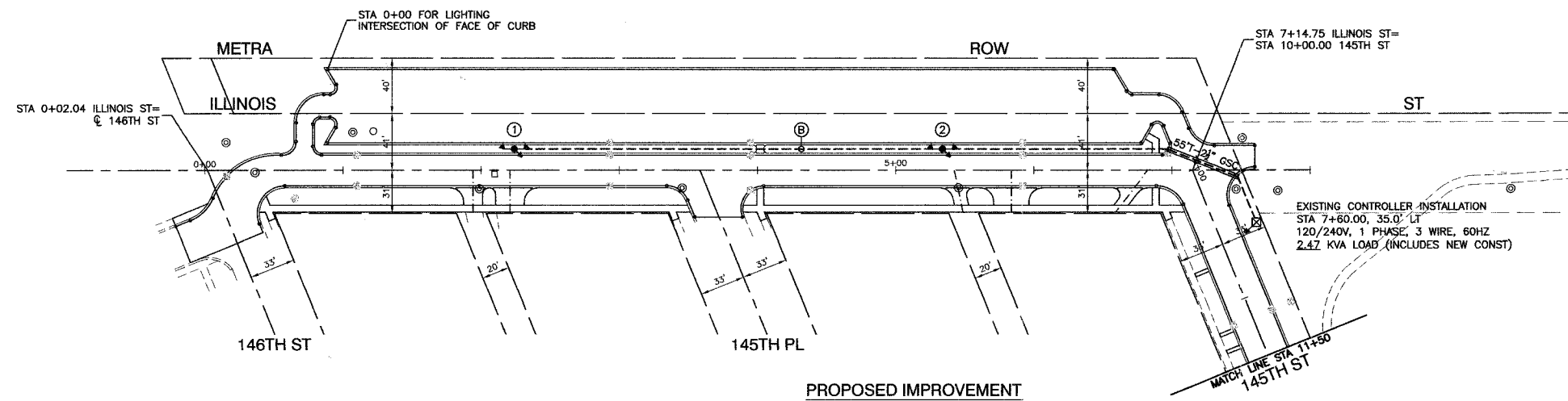
CONTRACT NO. 83912



FLOODLIGHTING DETAILS

POLE #	LOCATION (X,Y)	MH	LAT. AIM ANGLE	VERT. AIM ANGLE
1	57.5,135	40'	A 222.5	A 70
			B 317.5	B 70
2	57.5,445	40'	A 222.5	A 70
			B 317.5	B 70

NOTE: FOR LATERAL AIMING ANGLES, 0° IS DUE NORTHEASTERLY (PARALLEL W/FACE OF CURB)
 FOR VERTICAL AIMING ANGLES, 0° IS BASE OF POLE
 STA.0+00 FOR FLOODLIGHT POLES IS STA. 0+90.0, 73.0' LT OF C. OF ILLINOIS STREET.



LEGEND

- ALUMINUM POLE, 40' MH, W/TWIN MOUNT 150 WATT HPS FLOODLIGHTS (BLACK FINISH)
- CONTROL CABINET (EXISTING)
- CIRCUIT
- ELECTRIC CABLE IN UNIT DUCT, 2-1/C NO. 6 AND 1/C NO. 6 GROUND IN 1-1/2" DIA. POLYETHYLENE
- GALVANIZED STEEL CONDUIT, IN TRENCH
- POLE NUMBER
- GROUND ROD, 5/8" DIA. x 10'

BENCH MARK

SQUARE CUT IN BACK OF WALK AT ALLEY RETURN AT THE NORTHEAST CORNER OF RESIDENCE #14501 SCHOOL STREET.
 ELEVATION = 598.71 NGVD 29 (FEMA)

REVISIONS	
NAME	DATE

ILLINOIS DEPARTMENT OF TRANSPORTATION

COMMUTER PARKING LIGHTING PLAN

SCALE: VERT. 1"=50'
 HORIZ. 1"=50'
 DATE 2/22/07

DRAWN BY RG
 CHECKED BY PKB

ROBINSON ENGINEERING, LTD.
 17005 SOUTH PARK AVENUE SOUTH HOLLAND, ILLINOIS 60473
 (708) 321-4700 FAX (708) 321-3888
 ILLINOIS DESIGN FIRM REGISTRATION NO. 184621-03 04185-LIGHT-01