



F. A. U. SHE.	SECTION	COUNTY	TOTAL SHEETS	SHEET NO.
	03-00108-00-PK	COOK	025	002
STA.		TO STA.		
FED. ROAD DIST. NO.	ILLINOIS	FED. AID PROJECT		

CONTRACT NO. 83912

INDEX OF SHEETS

- 1. TITLE SHEET
- 2. INDEX OF SHEETS AND STATE STANDARDS
- 3. GENERAL NOTES
- 4. SUMMARY OF QUANTITIES
- 5. TYPICAL CROSS SECTIONS
- 6. ALIGNMENT AND TIES
- 7.-9. MAINTENANCE OF TRAFFIC
- 10.-11. PLAN AND PROFILE
- 12.-13. DRAINAGE AND UTILITIES
- 14. LIGHTING PLAN
- 15. LIGHTING DETAILS
- 16. LANDSCAPING AND TREE PROTECTION PLAN
- 17. PAVEMENT MARKING AND SIGNING
- 18.-23. CROSS SECTIONS
- 24.-25. DISTRICT ONE DETAILS

STATE STANDARDS

- 000001-04 STANDARD SYMBOLS, ABBREVIATIONS AND PATTERNS
- 280001-03 TEMPORARY EROSION CONTROL SYSTEMS
- 424001-04 CURB RAMPS FOR SIDEWALKS
- 601001-01 SUBSURFACE DRAINS
- 602001 CATCH BASIN, TYPE A
- 602011 CATCH BASIN, TYPE C
- 602301-01 INLET, TYPE A
- 602401-01 MANHOLE, TYPE A
- 602601-01 PRECAST REINFORCED CONCRETE FLAT SLAB TOP
- 602701 CAST IRON STEPS
- 604001-02 FRAME AND LIDS, TYPE 1
- 604036-01 GRATE TYPE 8
- 604051-02 FRAME AND GRATE, TYPE 11
- 606001-03 CONCRETE CURB TYPE B & COMBINATION CONCRETE CURB & GUTTER
- 701501-03 URBAN LANE CLOSURE, 2L, 2W, UNDIVIDED
- 701801-03 URBAN LANE CLOSURE, ML, 2W, CROSSWALK AND SIDEWALK CLOSURE
- 702001-06 TRAFFIC CONTROL DEVICES
- 720001 SIGN PANEL MOUNTING DETAILS
- 720006-01 SIGN PANEL ERECTION DETAILS
- 720011 METAL POSTS FOR SIGNS, MARKERS, AND DELINEATORS
- 729001 APPLICATIONS OF TYPE A AND B METAL POSTS (FOR SIGNS & MARKERS)
- 780001-01 TYPICAL PAVEMENT MARKINGS
- 805001 ELECTRIC SERVICE INSTALLATION DETAILS

REVISIONS	
NAME	DATE

**ILLINOIS DEPARTMENT OF TRANSPORTATION**

**COMMUTER PARKING  
INDEX OF SHEETS AND  
STATE STANDARDS**

SCALE: VERT. NONE      DRAWN BY: RG  
 DATE: 2/22/07      CHECKED BY: PKB

F. A. S. NO.	SECTION	COUNTY	TOTAL SHEETS	SHEET NO.
	03-00108-00-PK	COOK	025	003
STA.	TO STA.			
FED. ROAD DIST. NO.	ILLINOIS	FED. AID PROJECT		

CONTRACT NO. 83912

**GENERAL NOTES**

1. ANY REFERENCE TO STANDARDS THROUGHOUT THE PLANS OR SPECIAL PROVISIONS SHALL BE INTERPRETED TO BE THE LATEST STANDARDS OF THE ILLINOIS DEPARTMENT OF TRANSPORTATION.
2. ITEMS OF WORK LISTED IN THE SUMMARY OF QUANTITIES WHICH ARE NOT SPECIFICALLY INDICATED IN THE PLANS SHALL BE PERFORMED AT LOCATIONS AS DIRECTED BY THE ENGINEER.
3. DRAINAGE STRUCTURE ELEVATIONS: GRADES OF SEWER LINES WERE DETERMINED FROM AVAILABLE PLANS AND SURVEYS. ACCORDINGLY, AS DIRECTED BY THE ENGINEER, THE INVERTS OF THE PROPOSED DRAINAGE WILL BE REVISED TO MEET EXISTING FIELD CONDITIONS.
4. THE TOP OF ALL STRUCTURES SHALL BE FLUSH WITH THE ADJACENT SURFACE OR AT THE INDICATED ELEVATIONS SHOWN ON THE PLANS. ALL RIM ELEVATIONS OF STRUCTURES IN THE PROPOSED CURB LINE ARE GIVEN TO THE EDGE OF PAVEMENT. ALL OTHER RIM ELEVATIONS ARE GIVEN TO THE CENTER OF THE STRUCTURES.
5. HALF TRAPS ARE TO BE OMITTED IN CATCH BASINS EXCEPT WHERE NOTED.
6. FRAME ELEVATIONS ARE GIVEN ONLY TO ASSIST IN DETERMINING THE APPROXIMATE OVERALL HEIGHT OF THE STRUCTURE. FRAMES ON ALL NEW STRUCTURES WILL BE ADJUSTED TO THE FINAL ELEVATION OF THE AREA IN WHICH THEY ARE LOCATED AS PART OF THE STRUCTURE COST.
7. WHEN, IN THE CONSTRUCTION OPERATION, ANY LOOSE MATERIAL IS DEPOSITED IN THE FLOW LINE OF DITCHES, GUTTERS OR OTHER DRAINAGE STRUCTURES SO THAT THE NATURAL FLOW OF WATER IS OBSTRUCTED, IT SHALL BE REMOVED AT THE CLOSE OF EACH DAY BY THE CONTRACTOR AT HIS EXPENSE. AT THE CONCLUSION OF THE CONSTRUCTION OPERATIONS, ALL DRAINAGE STRUCTURES SHALL BE FREE FROM ALL DIRT AND DEBRIS. THIS WORK SHALL NOT BE PAID FOR SEPARATELY BUT SHALL BE CONSIDERED INCIDENTAL TO THE CONTRACT.
8. WHEN EXISTING DRAINAGE FACILITIES ARE DISTURBED, THE CONTRACTOR SHALL PROVIDE AND MAINTAIN TEMPORARY OUTLETS AND CONNECTIONS FOR ALL PRIVATE OR PUBLIC DRAINS, SEWERS OR CATCH BASINS. HE SHALL PROVIDE FACILITIES TO TAKE IN ALL STORM WATER WHICH WILL BE RECEIVED BY THESE DRAINS & SEWERS AND DISCHARGE SAME. HE SHALL PROVIDE AND MAINTAIN AN EFFICIENT PUMPING PLANT, IF NECESSARY, AND A TEMPORARY OUTLET, AND BE PREPARED AT ALL TIMES TO DISPOSE OF THE WATER RECEIVED FROM THESE TEMPORARY SEWER CONNECTIONS UNTIL SUCH TIME AS THE PERMANENT CONNECTIONS WITH SEWERS ARE BUILT AND IN SERVICE. THIS WORK SHALL NOT BE PAID FOR DIRECTLY, BUT WILL BE CONSIDERED INCIDENTAL TO THE CONTRACT.
9. THE CAST IRON FRAMES AND COVERS OF FILLED, ABANDONED OR REMOVED MANHOLES, INLETS AND CATCH BASINS OR THOSE FRAMES AND COVERS UPON STRUCTURES RECEIVING NEW FRAMES AND COVERS SHALL BE STOCKPILED WITHIN THE RIGHT-OF-WAY, AS DIRECTED BY THE ENGINEER, AND PICKED UP BY THE COMMUNITY.
10. THE APPROXIMATE LOCATION OF KNOWN PUBLIC UTILITIES ARE SHOWN ON THE PLANS. HOWEVER, THE DEPARTMENT DOES NOT GUARANTEE ITS ACCURACY. PRIOR TO COMMENCING OPERATIONS ON THE PROJECT WHICH MAY IN ANY WAY CREATE THE POSSIBILITY OF INVOLVEMENT WITH EXISTING UTILITIES, THE CONTRACTOR SHALL CONTACT THE FIRM (OR COMMUNITY) INVOLVED. ADJUSTMENT OF ALL PUBLIC UTILITIES WITHIN THE LIMITS OF THIS IMPROVEMENT WILL BE DONE BY THE RESPECTIVE OWNERS. NO ADDITIONAL COMPENSATION WILL BE ALLOWED DUE TO DELAYS OR INCONVENIENCE CAUSED BY THESE ADJUSTMENTS. IT SHALL BE THE CONTRACTOR'S RESPONSIBILITY TO VERIFY LOCATIONS OF UNDERGROUND INSTALLATION BEFORE STARTING CONSTRUCTION OPERATIONS.
11. ALL TRENCHES WITHIN 2 FEET OF PROPOSED PAVEMENT, DRIVEWAYS, AND SIDEWALKS SHALL BE BACKFILLED WITH TRENCH BACKFILL ONLY.
12. COMBINATION CONCRETE CURB AND GUTTER, TYPE B-6.12 SHALL BE INSTALLED WITH A THICKNESS EQUAL TO NINE AND ONE HALF INCHES (9 1/2").
13. THE CONTRACTOR SHALL PROTECT ALL TREES WITHIN AND ADJACENT TO THE CONSTRUCTION SITE DURING THE CLEARING AND SUBSEQUENT CONSTRUCTION OPERATIONS IN ACCORDANCE WITH SECTION 201 OF THE STANDARD SPECIFICATIONS. THOSE TREES TO BE REMOVED AS SHOWN IN THE PLANS SHALL BE DONE IN ACCORDANCE WITH SECTION 201 AND 202 OF THE STANDARD SPECIFICATIONS.
14. BEFORE STARTING ANY EXCAVATION, THE CONTRACTOR SHALL CALL "JULIE" AT 800-892-0123 FOR FIELD LOCATIONS OF BURIED ELECTRIC, TELEPHONE AND GAS FACILITIES. (48 HOURS NOTIFICATION IS REQUIRED).
15. THE CONTRACTOR SHALL COORDINATE CONSTRUCTION ACTIVITIES WITH UTILITY COMPANIES.
16. THE CONTRACTOR WILL NOT BE ALLOWED TO SET UP A YARD OR FIELD OFFICE ON VILLAGE PROPERTY WITHOUT WRITTEN PERMISSION FROM THE VILLAGE.
17. BARRICADES: THE CONTRACTOR SHALL PROVIDE AND INSTALL TWO (2) WEIGHTED SAND BAGS ON EACH TYPE I OR TYPE II BARRICADE USED. (ONE (1) WEIGHTED SAND BAG ACROSS EACH BOTTOM RAIL).
18. ALL STORM SEWERS FOR THIS PROJECT SHALL BE FURNISHED AND INSTALLED WITH RUBBER GASKETS IN ACCORDANCE WITH THE APPLICABLE PORTIONS OF SECTION 550 OF THE STANDARD SPECIFICATIONS. THIS WORK WILL NOT BE PAID FOR SEPARATELY BUT SHALL BE INCLUDED IN THE UNIT PRICE BID FOR STORM SEWERS AS SPECIFIED.
19. THE CONTRACTOR SHALL CONTACT THE DISTRICT ONE TRAFFIC CONTROL SUPERVISOR AT (847) 705-4150 A MINIMUM OF 72 HOURS IN ADVANCE OF BEGINNING WORK. THE CONTRACTOR SHALL ALSO CONTACT ROBINSON ENGINEERING (708) 331-6700 AND THE VILLAGE OF RIVERDALE (708) 841-2200, A MINIMUM OF 72 HOURS IN ADVANCE OF BEGINNING WORK.
20. ALL BITUMINOUS PAVING SHALL FOLLOW DESIGNATED DRIVING LANES AS SHOWN IN STRIPING DETAILS. NO LONGITUDINAL PAVING JOINT OR SEAMS ARE ALLOWED WITHIN THE DRIVING LANES. ALL LONGITUDINAL PAVING JOINTS OR SEAMS WILL BE BETWEEN THE DRIVING LANES.
21. POROUS GRANULAR EMBANKMENT (PGE) SUBGRADE HAS BEEN PROVIDED FOR LOCATIONS WHERE SOILS TEND TO BE UNSTABLE WHEN WET. THE ACTUAL NEED FOR REMOVAL AND REPLACEMENT WITH PGE WILL BE DETERMINED IN THE FIELD AT THE TIME OF CONSTRUCTION BY THE ENGINEER (BY USE OF A CONE PENETROMETER IN CONJUNCTION WITH THE IDOT SUBGRADE STABILITY MANUAL). IF UNSTABLE AND/OR UNSUITABLE MATERIALS ARE NOT ENCOUNTERED, THEN THE QUANTITY SHALL BE DEDUCTED AND NO ADDITIONAL COMPENSATION WILL BE DUE TO THE CONTRACTOR.
22. ALL PAVEMENT, CURB AND SIDEWALK REMOVALS SHALL BE MADE BY MEANS OF STRAIGHT SAW CUT JOINT. THE COST FOR SAW CUTTING SHALL BE INCIDENTAL TO THE CONTRACT.
23. CONTRACTOR SHALL BE RESPONSIBLE AT ALL TIMES FOR TRAFFIC CONTROL AND PROTECTION IN ACCORDANCE WITH THE IDOT STANDARD SPECIFICATIONS ADOPTED JANUARY 1, 2007, THE LATEST EDITION OF THE ILLINOIS MANUAL ON UNIFORM TRAFFIC CONTROL DEVICES FOR STREETS AND HIGHWAYS, AND THE STANDARD SPECIFICATIONS FOR TRAFFIC CONTROL ITEMS.
24. THE CONTRACTOR SHALL MAKE EVERY ATTEMPT NOT TO DAMAGE EXISTING TREES.
25. 10' TRANSITIONS SHALL BE USED TO MATCH PROPOSED CURB AND GUTTER TO EXISTING CURB AND GUTTER OR TO TAPER FROM 6" TO 0", UNLESS OTHERWISE SHOWN. THE TRANSITIONS SHALL BE PAID FOR AT THE CONTRACT UNIT PRICE FOR THE PROPOSED ITEM OF WORK SPECIFIED.
26. ALL STORM SEWERS, UNLESS OTHERWISE NOTED, SHALL CONFORM TO THE STATE SPECIFICATIONS FOR REINFORCED CONCRETE CULVERT, STORM DRAIN AND SEWER PIPE A.A.S.H.T.O. DESIGNATION M170 (A.S.T.M. DESIGNATION C76), WITH A MINIMUM OF CLASS III.
27. THE CONTRACTOR SHALL MAINTAIN ACCESS TO ALL DRIVEWAYS THROUGHOUT THE RECONSTRUCTION LIMITS AT ALL TIMES. IF DRIVEWAY ACCESS MUST BE RESTRICTED, THE CONTRACTOR SHALL NOTIFY THE RESIDENT IN WRITING 24 HOURS IN ADVANCE.
28. HOT MIX ASPHALT HAS BEEN CALCULATED ON THE BASIS OF 112 LB PER INCH THICKNESS PER SQUARE YARD.
29. DETECTABLE WARNINGS SHALL BE INSTALLED PER HIGHWAY STANDARD 424001 AT ALL STREET CROSSINGS. WHERE SIDEWALK IS REPLACED.
30. TEMPORARY FENCE SHOULD BE ERECTED ALONG THE DRIPLINE OF EXISTING TREES TO REMAIN WITHIN THE LIMITS OF CONSTRUCTION. AFTER TREES ARE SAFELY FENCED NOTHING IS TO BE STORED, DRIVEN, OR DISTURBED INSIDE THE FENCE. REMOVE PROTECTIVE TEMPORARY FENCE ONLY AFTER ALL CONSTRUCTION WORK HAS BEEN COMPLETED.
31. THE CONTRACTOR SHALL TAKE ALL NECESSARY PRECAUTIONS FOR THE PROTECTION OF EXISTING PLANT MATERIAL FOR WHICH THE CONTRACT DOES NOT PROVIDE REMOVAL. THE PROTECTION OF EXISTING PLANT MATERIAL AND THE REPAIR OR REPLACEMENT OF EXISTING PLANT MATERIAL DAMAGED BY THE CONTRACTOR SHALL BE DONE IN ACCORDANCE WITH THE REQUIREMENTS OF SECTION 201 OF THE STANDARD SPECIFICATIONS.
32. TREE ROOT PRUNING IS TO BE USED ON EXISTING TREES TO PREVENT THE RIPPING UP OF ROOTS WHEN TRENCHING OR EXCAVATION IS WITHIN THE ROOT ZONE OF ADJACENT TREES TO REMAIN. SUPPLEMENTAL WATERING OF TREES SHOULD BEGIN IMMEDIATELY AFTER ROOT PRUNING OF THE TREES HAS OCCURRED.
33. EROSION CONTROL WORK ITEMS ARE CONSIDERED TO BE HIGH PRIORITY ITEMS ON THIS CONTRACT. THE ENGINEER WILL IMPLEMENT ALL PROVISIONS OF THE SPECIFICATION NECESSARY TO ASSURE THAT EROSION CONTROL ITEMS ARE CONSTRUCTED AND MAINTAINED IN A TIMELY WAY. ALL EROSION CONTROL MEASURES SHALL BE INSTALLED PRIOR TO BEGINNING ANY CONSTRUCTION ACTIVITIES WHICH WILL POTENTIALLY CREATE ERODABLE CONDITIONS.

REVISIONS	
NAME	DATE

**ILLINOIS DEPARTMENT OF TRANSPORTATION**

**COMMUTER PARKING  
GENERAL NOTES**

SCALE: VERT. \_\_\_\_\_  
 HORIZ. NONE  
 DATE 2/22/07

DRAWN BY PS  
 CHECKED BY PKB

ROBINSON ENGINEERING, LTD.  
 1700 SOUTH PARK AVENUE SOUTH HOLLAND, ILLINOIS 60476  
 (708) 551-6700 FAX (708) 381-3838  
 ILLINOIS DESIGN FIRM REGISTRATION NO. 154901138 04185-NOTE-01

F. A. U. NO.	SECTION	COUNTY	TOTAL SHEETS	SHEET NO.
	03-00108-00-PK	COOK	025	004
STA.	TO STA.			
FED. ROAD DIST. NO.	ILLINOIS	FED. AID PROJECT		

CONTRACT NO. 83912

SUMMARY OF QUANTITIES

S.I. CODE NO.	PAY ITEM	UNIT	QUAN
20100110	TREE REMOVAL (6 TO 15 UNITS DIAMETER)	UNIT	310
20100210	TREE REMOVAL (OVER 15 UNITS DIAMETER)	UNIT	754
20101000	TEMPORARY FENCE	FOOT	402
20101200	TREE ROOT PRUNING	EACH	10
20200410	EARTH EXCAVATION (SPECIAL)	CU YD	5280
20201200	REMOVAL AND DISPOSAL OF UNSUITABLE MATERIAL	CU YD	400
20400800	FURNISHED EXCAVATION	CU YD	50
20700400	POROUS GRANULAR EMBANKMENT, SPECIAL	CU YD	400
20800150	TRENCH BACKFILL	CU YD	316
21001000	GEOTECHNICAL FABRIC FOR GROUND STABILIZATION	SQ YD	2000
21101615	TOPSOIL FURNISH AND PLACE, 4"	SQ YD	4731
* 25000400	NITROGEN FERTILIZER NUTRIENT	POUND	59
* 25000500	PHOSPHORUS FERTILIZER NUTRIENT	POUND	59
* 25000600	POTASSIUM FERTILIZER NUTRIENT	POUND	59
* 25200110	SODDING, SALT TOLERANT	SQ YD	3600
25200200	SUPPLEMENTAL WATERING	UNIT	20
28000510	INLET FILTERS	EACH	30
35101800	AGGREGATE BASE COURSE, TYPE B 6"	SQ YD	89
35501308	HOT-MIX ASPHALT BASE COURSE, 6"	SQ YD	125
40201000	AGGREGATE FOR TEMPORARY ACCESS	TON	60
40603310	HOT-MIX ASPHALT SURFACE COURSE, MIX "C", N50	TON	29
40701801	HOT-MIX ASPHALT PAVEMENT (FULL-DEPTH), 6"	SQ YD	8009
42300400	PORTLAND CEMENT CONCRETE DRIVEWAY PAVEMENT, 8 INCH	SQ YD	67
42400200	PORTLAND CEMENT CONCRETE SIDEWALK 5 INCH	SQ FT	4520
42400800	DETECTABLE WARNINGS	SQ FT	144
44000200	DRIVEWAY PAVEMENT REMOVAL	SQ YD	242
44000500	COMBINATION CURB AND GUTTER REMOVAL	FOOT	850
44000600	SIDEWALK REMOVAL	SQ FT	1101
55019500	STORM SEWERS, TYPE 1, REINFORCED CONCRETE CULVERT, STORM DRAIN, AND SEWER PIPE, CLASS IV 12"	FOOT	358
55021600	STORM SEWERS, TYPE 2, REINFORCED CONCRETE CULVERT, STORM DRAIN, AND SEWER PIPE, CLASS III 12"	FOOT	521
55021700	STORM SEWERS, TYPE 2, REINFORCED CONCRETE CULVERT, STORM DRAIN, AND SEWER PIPE, CLASS III 15"	FOOT	372
55021800	STORM SEWERS, TYPE 2, REINFORCED CONCRETE CULVERT, STORM DRAIN, AND SEWER PIPE, CLASS III 18"	FOOT	201
55100200	STORM SEWER REMOVAL 6"	FOOT	85
55100300	STORM SEWER REMOVAL 8"	FOOT	140
55100400	STORM SEWER REMOVAL 10"	FOOT	14
56500600	DOMESTIC WATER SERVICE BOXES TO BE ADJUSTED	EACH	2
60107600	PIPE UNDERDRAINS 4"	FOOT	114
60201105	CATCH BASINS, TYPE A, 4'-DIAMETER, TYPE 11 FRAME AND GRATE	EACH	10
60207605	CATCH BASINS, TYPE C, TYPE 8 GRATE	EACH	1
60218400	MANHOLES, TYPE A, 4'-DIAMETER, TYPE 1 FRAME, CLOSED LID	EACH	2
60236800	INLETS, TYPE A, TYPE 11 FRAME AND GRATE	EACH	11
60500050	REMOVING CATCH BASINS	EACH	6
60603800	COMBINATION CONCRETE CURB AND GUTTER, TYPE B-6.12	FOOT	4205
66410300	CHAIN LINK FENCE REMOVAL	FOOT	170
67000400	ENGINEER'S FIELD OFFICE, TYPE A	CAL MO	4
67100100	MOBILIZATION	L SUM	1
70102620	TRAFFIC CONTROL AND PROTECTION, STANDARD 701501	L SUM	1
70102640	TRAFFIC CONTROL AND PROTECTION, STANDARD 701801	L SUM	1
* 72000100	SIGN PANEL - TYPE 1	SQ FT	38

SUMMARY OF QUANTITIES

S.I. CODE NO.	PAY ITEM	UNIT	QUAN
72900200	METAL POST - TYPE B	FOOT	72
* 78000100	THERMOPLASTIC PAVEMENT MARKING - LETTERS AND SYMBOLS	SQ FT	27
* 78000200	THERMOPLASTIC PAVEMENT MARKING - LINE 4"	FOOT	5421
* 78000400	THERMOPLASTIC PAVEMENT MARKING - LINE 6"	FOOT	212
* 78000650	THERMOPLASTIC PAVEMENT MARKING - LINE 24"	FOOT	104
* 80400100	ELECTRIC SERVICE INSTALLATION	EACH	1
* XX006957	GROUND ROD, 5/8" DIA. X 10 FT.	EACH	2
* 81000700	CONDUIT IN TRENCH, 2 1/2" DIA., GALVANIZED STEEL	FOOT	70
* 81900200	TRENCH AND BACKFILL FOR ELECTRICAL WORK	FOOT	590
* XX006949	UNIT DUCT, WITH 2-1/C NO. 6 AND 1/C NO. 8 GROUND, 600V (XLP-TYPE USE-2), 1 1/4" DIA., POLYETHYLENE	FOOT	615
* 83600200	LIGHT POLE FOUNDATION, 24" DIAMETER	FOOT	26
* A2000320	TREE, ACER MIYABEI MORTON (STATE STREET MIYABE MAPLE), 2-1/2" CALIPER, BALLED AND BURLAPPED	EACH	8
* A2004716	TREE, GLEDITSIA TRIACANTHOS INERMIS SHADEMASTER (SHADEMASTER THORNLESS COMMON HONEYLOCUST), 2" C	EACH	5
* A2006516	TREE, QUERCUS BICOLOR (SWAMP WHITE OAK), 2" CALIPER, BALLED AND BURLAPPED	EACH	9
* A2012001	TREE, AESCULUS X CARNE BRIOTTI (BRIOTTI HORSECHESTNUT), 2" CALIPER, BALLED AND BURLAPPED	EACH	6
* B2001668	TREE, CRATAEGUS CRUGALLI INERMIS (THORN LESS COCKSPUR HAWTHORN), 7' HEIGHT, SHRUB FORM, BALLED AND BURLAPPED	EACH	3
* X0322859	WEED CONTROL, PRE-EMERGENT GRANULAR HERBICIDE	POUND	150
X0323426	SEDIMENT CONTROL, DRAINAGE STRUCTURE INLET FILTER CLEANING	EACH	15
X0323973	SEDIMENT CONTROL, SILT FENCE	FOOT	2000
X0323974	SEDIMENT CONTROL, SILT FENCE MAINTENANCE	FOOT	300
* XX004861	TREE, ULMUS CARPINIFOLIA ACCOLADE MORTON (ACCOLADE ELM), 2 1/2" CALIPER, BALLED AND BURLAPPED	EACH	11
Z0001050	AGGREGATE SUBGRADE 12"	SQ YD	9267
Z0017400	DRAINAGE & UTILITY STRUCTURES TO BE ADJUSTED	EACH	7
Z0017700	DRAINAGE & UTILITY STRUCTURES TO BE RECONSTRUCTED	EACH	4
* XX006950	FLOODLIGHT, SODIUM VAPOR, HORIZONTAL MOUNT, 150 WATT	EACH	4
* XX006951	LIGHT POLE, ALUMINUM, 40 FT. NOMINAL M.H., TWIN BULLHORN BRACKET ARM	EACH	2

\* - INDICATES SPECIALTY ITEMS

REVISIONS	
NAME	DATE
IDOT COMMENTS	3/16/07
IDOT COMMENTS	4/11/07

ILLINOIS DEPARTMENT OF TRANSPORTATION

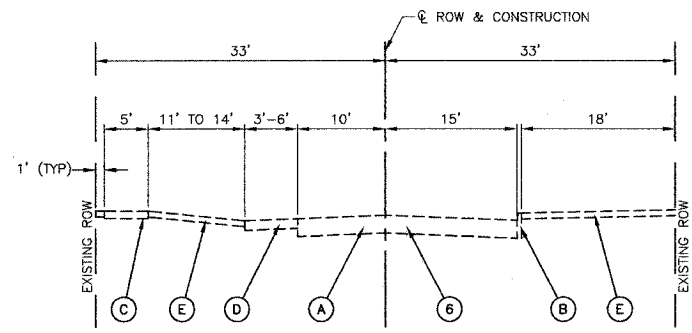
COMMUTER PARKING  
SUMMARY OF QUANTITIES

SCALE: VERT. NONE      DRAWN BY: RG  
 HORIZ. NONE      CHECKED BY: PKB  
 DATE: 3/16/07

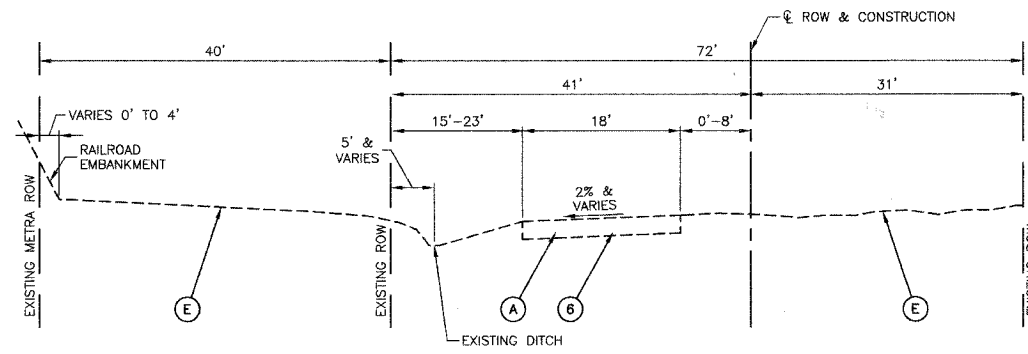
ROBINSON ENGINEERING, LTD.  
 11000 SOUTH PARK AVENUE, ROCKFORD, ILLINOIS 61105  
 (708) 391-4700      FAX (708) 391-3826      04185-QUAN-01  
 ILLINOIS DESIGN FIRM REGISTRATION NO. 164601102

F. A. U. NO.	SECTION	COUNTY	TOTAL SHEETS	SHEET NO.
	03-00108-00-PK	COOK	025	005
STA.	TO STA.			
FED. ROAD DIST. NO.	ILLINOIS	FED. AID PROJECT		

CONTRACT NO. 83912



EXISTING TYPICAL CROSS SECTION  
145TH STREET



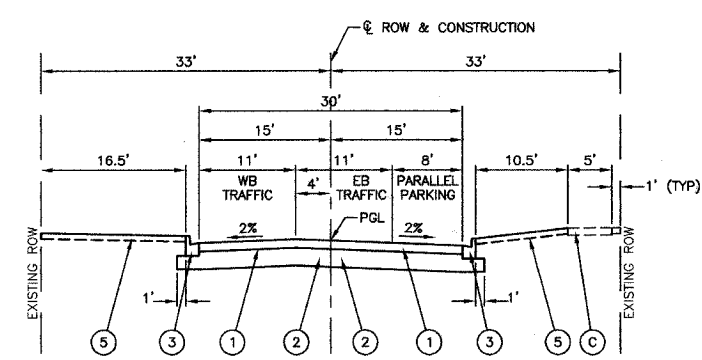
EXISTING TYPICAL CROSS SECTION  
ILLINOIS STREET

EXISTING LEGEND

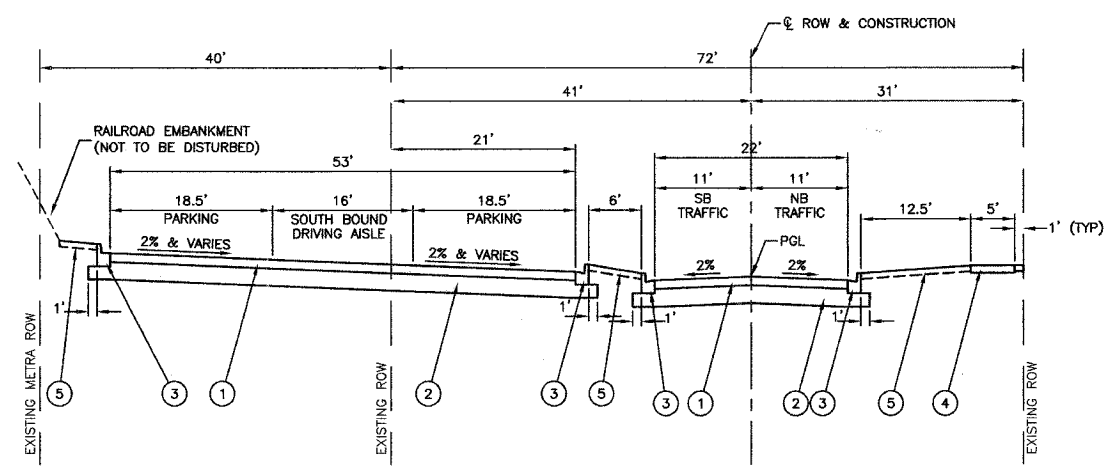
- (A) HMA PAVEMENT & AGGREGATE BASE
- (B) TYPE B CURB
- (C) PORTLAND CEMENT CONCRETE SIDEWALK
- (D) AGGREGATE SHOULDER
- (E) GRASS PARKWAY

PROPOSED LEGEND

- (1) HOT-MIX ASPHALT PAVEMENT (FULL DEPTH) 6"
- (2) AGGREGATE SUBGRADE - 12"
- (3) COMBINATION CONCRETE CURB AND GUTTER, TYPE B-6.12
- (4) P.C.C. SIDEWALK - 5" (SEE PLAN AND PROFILE SHEETS FOR LOCATIONS)
- (5) TOPSOIL FURNISH AND PLACE, 4" SODDING, SALT TOLERANT
- (6) PAVEMENT REMOVAL (PAID FOR AS EARTH EXCAVATION)



PROPOSED TYPICAL CROSS SECTION  
145TH STREET



PROPOSED TYPICAL CROSS SECTION  
ILLINOIS STREET

HOT-MIX ASPHALT MIXTURE REQUIREMENTS

MIXTURE TYPE	AC TYPE	AIR VOIDS
FULL DEPTH PAVEMENT		
HOT-MIX ASPHALT SURFACE COURSE, MIX "C", N50 (IL 9.5mm); 2"	PG 64-22	4% @ 50 Gyr.
HOT-MIX ASPHALT BINDER COURSE, IL-19.0, N50; 4"	PG 64-22/58-22 *	4% @ 50 Gyr.
DRIVEWAYS AND ALLEYS		
HOT-MIX ASPHALT SURFACE COURSE, MIX "C", N50 (IL 9.5mm); 2"	PG 64-22	4% @ 50 Gyr.
HOT-MIX ASPHALT BASE COURSE, (HMA BINDER IL-19mm); 6"	PG 64-22 *	4% @ 50 Gyr.

THE UNIT WEIGHT USED TO CALCULATE ALL HOT-MIX ASPHALT SURFACE MIXTURE QUANTITIES IS 112 lbs/sq yd/in.  
\* WHEN RAP EXCEEDS 20%, THE NEW ASPHALT BINDER IN THE MIX SHALL BE PG 58-22

REVISIONS	
NAME	DATE

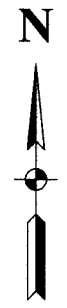
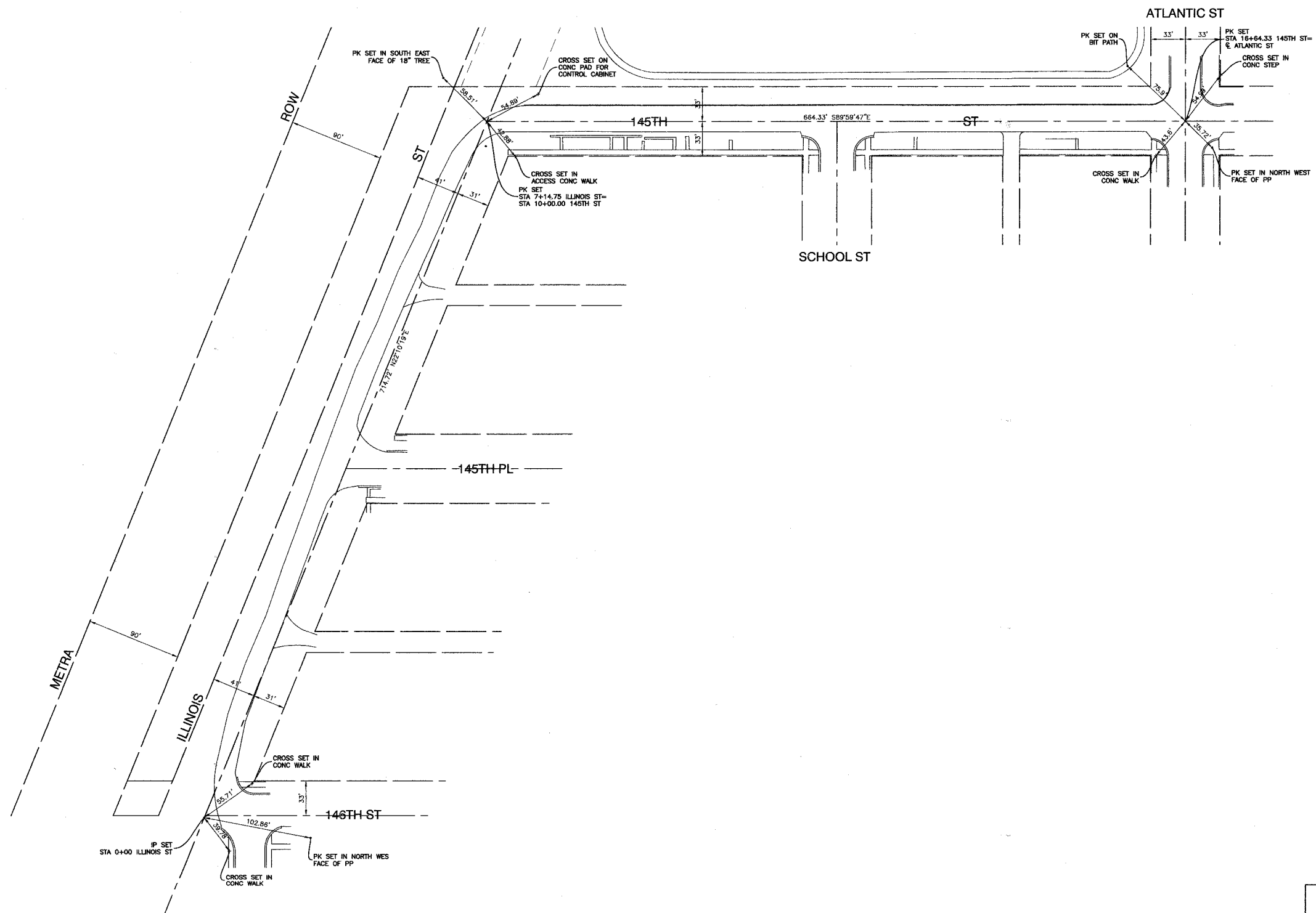
ILLINOIS DEPARTMENT OF TRANSPORTATION  
COMMUTER PARKING  
TYPICAL CROSS SECTIONS

SCALE: VERT. NONE  
HORIZ. NONE  
DATE: 2/22/07

DRAWN BY: AG  
CHECKED BY: PKB

F. A. B. REL.	SECTION	COUNTY	TOTAL SHEETS	SHEET NO.
	03-00108-00-PK	COOK	025	006
STA.	TO STA.			
FED. ROAD DIST. NO.	BLMDS	FED. AID PROJECT		

CONTRACT NO. 83912



REVISIONS	
NAME	DATE

ILLINOIS DEPARTMENT OF TRANSPORTATION

**COMMUTER PARKING ALIGNMENT AND TIES**

SCALE: VERT. 1"=50'  
 HORIZ. 1"=50'  
 DATE 2/22/07

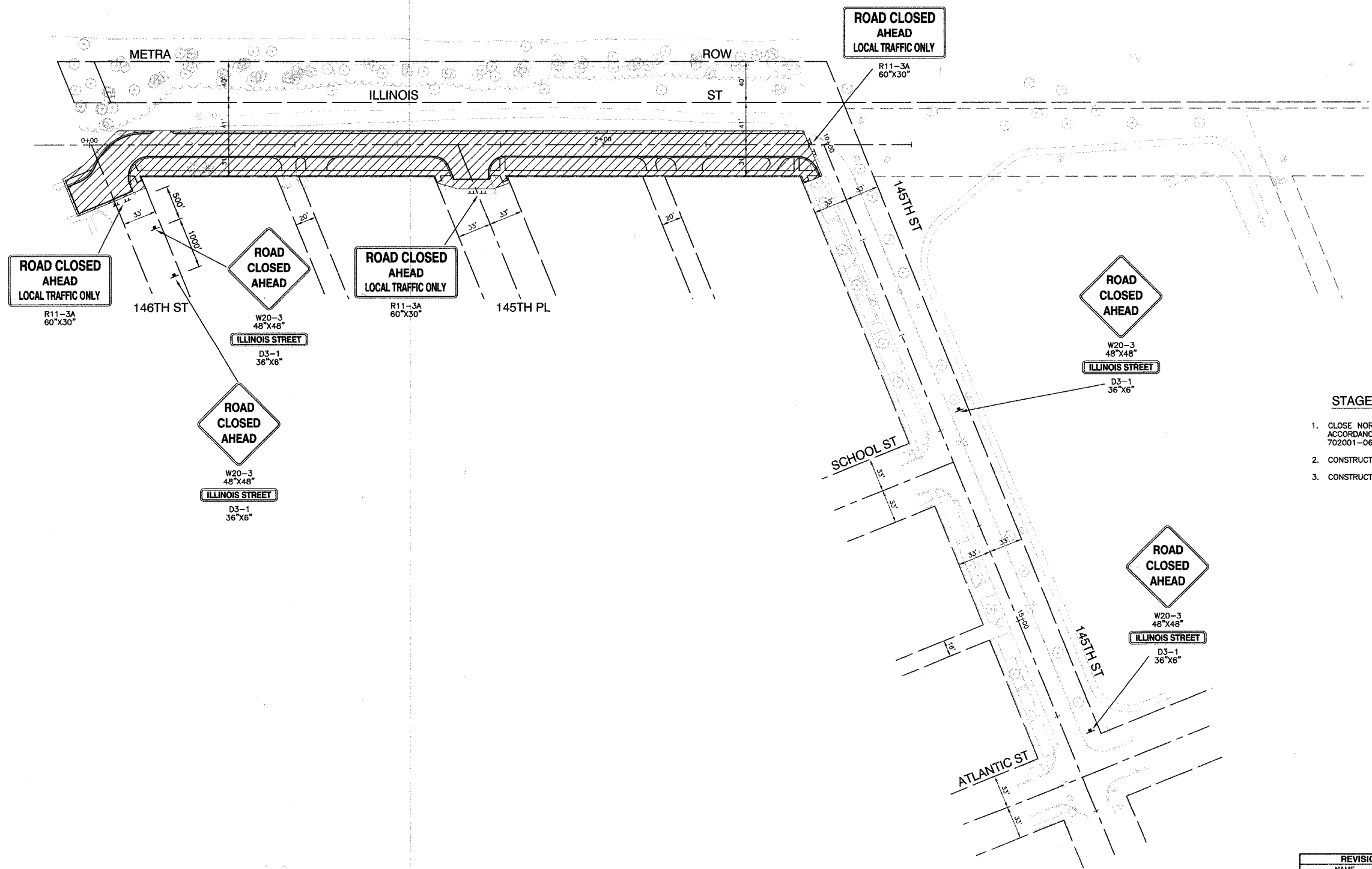
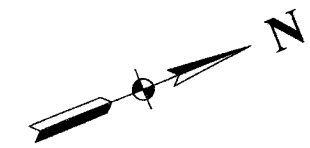
DRAWN BY AG  
 CHECKED BY PKB

**ROBINSON ENGINEERING, LTD.**  
 1700 SOUTH PARK AVENUE SOUTH HOLLAND, ILLINOIS 60473  
 (708) 581-6100 FAX (708) 321-3828  
 ILLINOIS DESIGN FIRM REGISTRATION NO. 18401128

04185-TIES 01

F. A. U. SHEET NO.	SECTION	COUNTY	TOWNSHIP	RANGE
	03-00108-00-PK	COOK	025	007
STA.	TO STA.			
FED. ROAD DIST. NO.	ILLINOIS	FED. AID PROJECT		

CONTRACT NO. 83912



- STAGE 1 NOTES**
1. CLOSE NORTH AND SOUTH TERMINI OF ILLINOIS STREET IN ACCORDANCE WITH TRAFFIC CONTROL DEVICES PER STANDARD 702001-06.
  2. CONSTRUCT STORM SEWER AND APPURTENANCES ON ILLINOIS STREET.
  3. CONSTRUCT CURB AND GUTTER AND PAVEMENT ALONG ILLINOIS STREET.

**LEGEND**

	WORK AREA
	TYPE III BARRICADE WITH STEADY BURNING LIGHT
	SIGN

REVISIONS	
NAME	DATE

ILLINOIS DEPARTMENT OF TRANSPORTATION

**COMMUTER PARKING  
MAINTENANCE OF TRAFFIC  
STAGE 1**

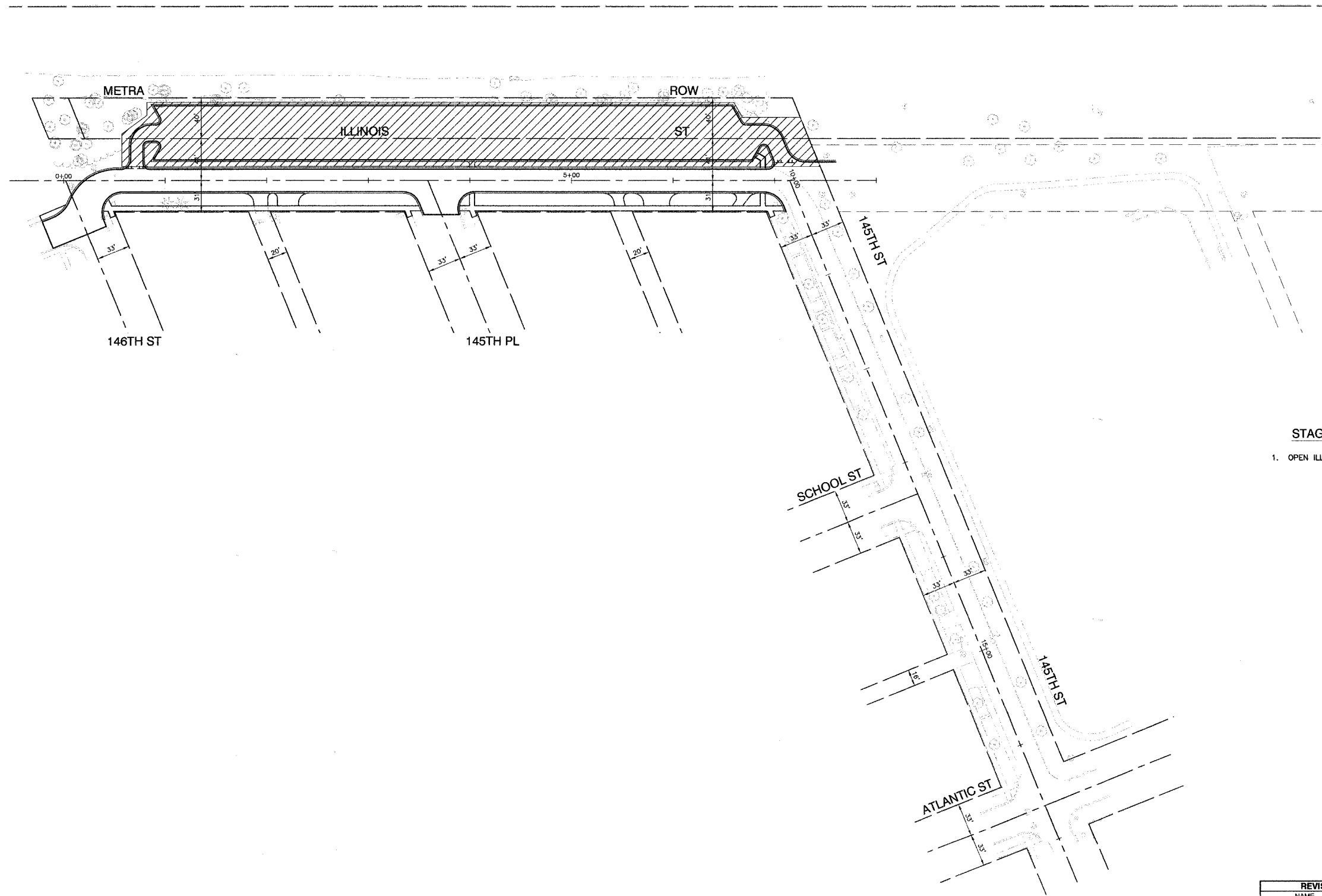
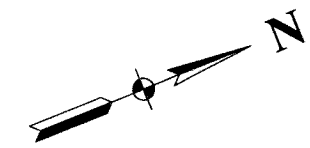
SCALE: VERT. 1"=50'  
HORIZ. 1"=50'  
DATE: 2/22/07

DRAWN BY PS  
CHECKED BY PKB

**ROBINSON ENGINEERING, LTD.**  
17000 SOUTH PARK AVENUE SOUTH HOLLAND, ILLINOIS 60473  
(708) 321-6100 FAX (708) 321-8600  
ILLINOIS DESIGN FIRM REGISTRATION NO. 184001128 04185-TC001-01

F. A. U. NO.	SECTION	COUNTY	TOTAL SHEETS	SHEET NO.
	03-00108-00-PK	COOK	025	008
STA.	TO STA.			
FED. ROAD DIST. NO.	ILLINOIS	FED. AID PROJECT		

CONTRACT NO. 83912



**STAGE 2 NOTES**

1. OPEN ILLINOIS STREET FOR 2-WAY TRAFFIC AND CONSTRUCT PARKING LOT.

**LEGEND**

- WORK AREA
- TYPE III BARRICADE WITH STEADY BURNING LIGHT
- SIGN

REVISIONS	
NAME	DATE

**ILLINOIS DEPARTMENT OF TRANSPORTATION**

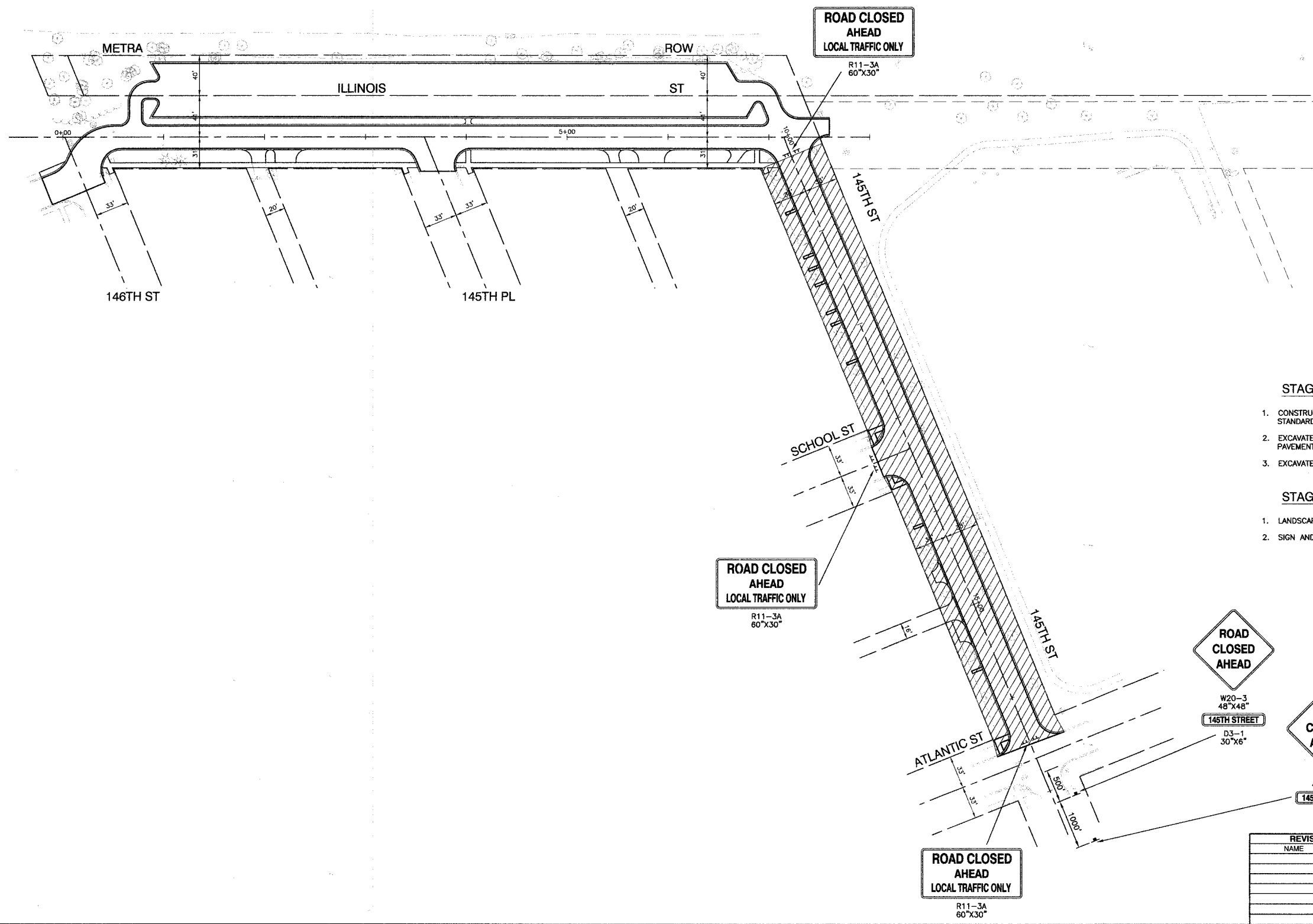
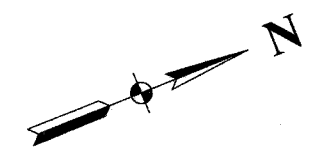
**COMMUTER PARKING  
MAINTENANCE OF TRAFFIC  
STAGE 2**

SCALE: VERT.      DRAWN BY PS  
 HORIZ. 1"=50'  
 DATE 2/22/07      CHECKED BY PKB



T. A. U. REF.	SECTION	COUNTY	TOTAL SHEETS	SHEET NO.
	03-00108-00-PK	COOK	025	009
STA.		TO STA.		
FED. ROAD DIST. NO.	ILLINOIS	FED. AID PROJECT		

CONTRACT NO. 83912



**STAGE 3 NOTES**

1. CONSTRUCT STORM SEWER ALONG 145TH STREET USING DAILY LANE CLOSURES PER STANDARD 701501-03.
2. EXCAVATE FOR AND CONSTRUCT CURB AND GUTTER ALONG BOTH SIDES OF NEW PAVEMENT USING DAILY LANE CLOSURES PER STANDARD 701501-03.
3. EXCAVATE REMAINDER OF ROADWAY AND CONSTRUCT PAVEMENT UNDER LOCAL TRAFFIC.

**STAGE 4 NOTES**

1. LANDSCAPE ALL AREAS.
2. SIGN AND STRIPE ALL AREAS.

**LEGEND**

- WORK AREA
- TYPE III BARRICADE WITH STEADY BURNING LIGHT
- SIGN



REVISIONS	
NAME	DATE

ILLINOIS DEPARTMENT OF TRANSPORTATION

**COMMUTER PARKING  
MAINTENANCE OF TRAFFIC  
STAGES 3 & 4**

SCALE: VERT. 1"=50'  
HORIZ. 1"=50'

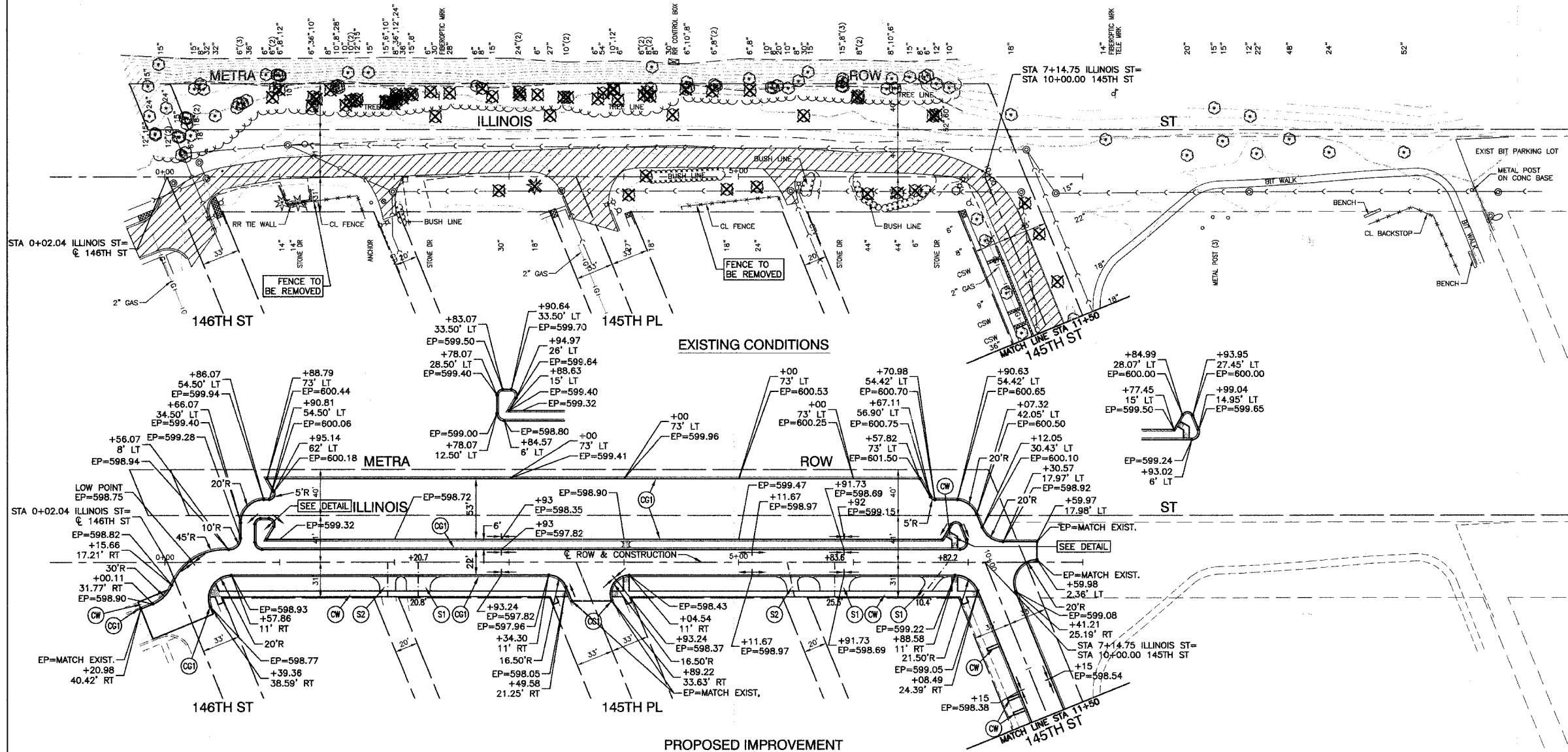
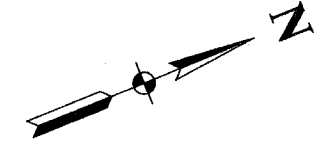
DATE: 2/22/07

DRAWN BY: PS  
CHECKED BY: PKB

ROBINSON ENGINEERING, LTD.  
1700 SOUTH PARK AVENUE, SOUTH HOLLAND, ILLINOIS 60476  
708.535.8700 FAX 708.535.9828  
ILLINOIS DESIGN FIRM REGISTRATION NO. 186001128 04185-TC00N-03

F. A. L. NO.	SECTION	COUNTY	TOTAL SHEETS	SHEET NO.
	03-00108-00-PK	COOK	025	010
STA. 0+00	TO STA. 11+50			
FED. ROAD DIST. NO.	ALIAS	FED. AID PROJECT		

CONTRACT NO. 83912

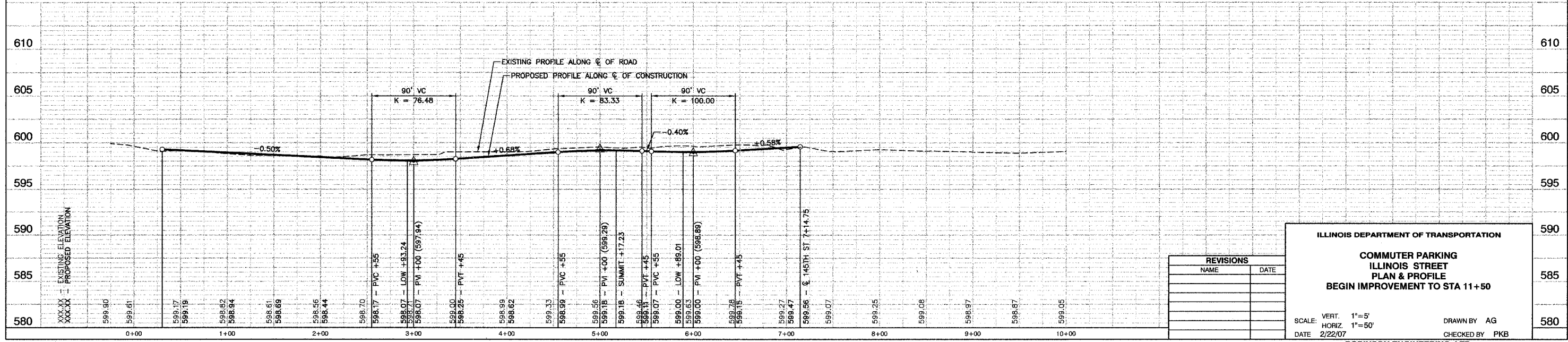


**LEGEND**

- ⊗ TREE TO BE REMOVED
- CONC CURB AND GUTTER REMOVAL
- ▨ BITUMINOUS PAVEMENT REMOVAL (PAID AS EARTH EXCAVATION)
- ▩ CONCRETE REMOVAL
- DETECTABLE WARNINGS
- ⊙ P.C.C. SIDEWALK, 5"
- ⊙ P.C.C. DRIVEWAY, 8"
- ⊙ HOT-MIX ASPHALT DRIVEWAY
- ⊙ HOT-MIX ASPHALT BASE COURSE, 6"
- ⊙ HOT-MIX ASPHALT SURFACE COURSE, MIX "C", N50, 2"
- ⊙ ALLEY
- ⊙ HOT-MIX ASPHALT BASE COURSE, 6"
- ⊙ HOT-MIX ASPHALT SURFACE COURSE, MIX "C", N50, 2"
- ⊙ C & G TYPE B-6.12
- ⊙ 10' TRANSITION FROM C & G TYPE B-6.12 TO EXISTING CURB AND GUTTER

**NOTE:**  
DETECTABLE WARNINGS SHALL BE INSTALLED PER HIGHWAY STANDARD 424001 AT ALL STREET CROSSINGS WHERE SIDEWALK IS REPLACED.

**BENCH MARK**  
SQUARE CUT IN BACK OF WALK AT ALLEY RETURN AT THE NORTHEAST CORNER OF RESIDENCE #14501 SCHOOL STREET.  
ELEVATION = 598.71 NGVD 29 (FEMA)



REVISIONS	
NAME	DATE

**ILLINOIS DEPARTMENT OF TRANSPORTATION**

**COMMUTER PARKING  
ILLINOIS STREET  
PLAN & PROFILE  
BEGIN IMPROVEMENT TO STA 11+50**

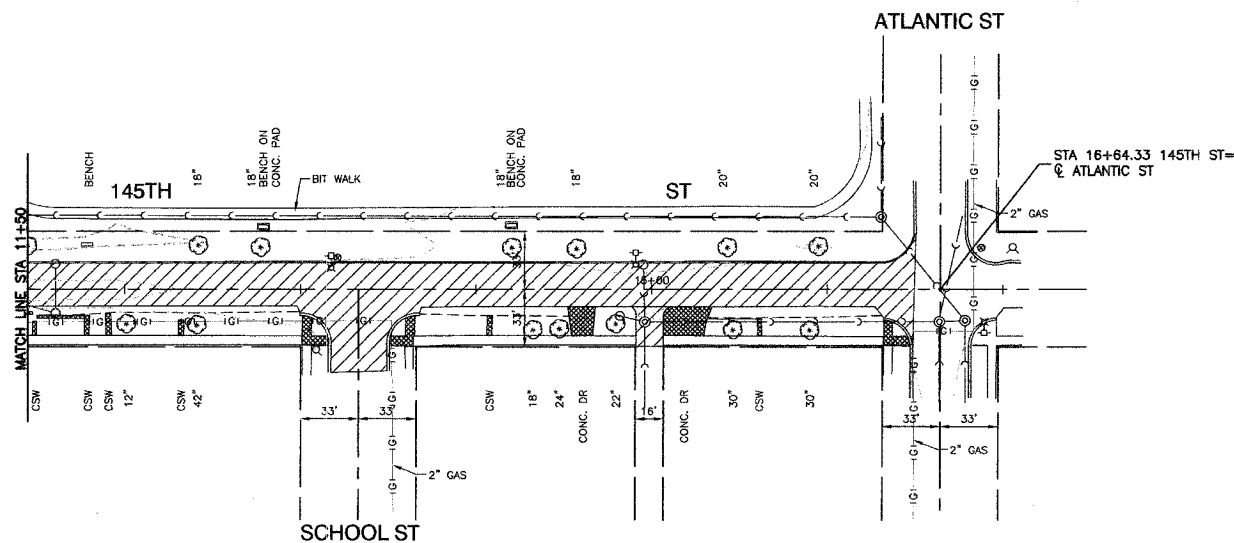
SCALE: VERT. 1"=5'  
HORIZ. 1"=50'  
DATE 2/22/07

DRAWN BY AG  
CHECKED BY PKB

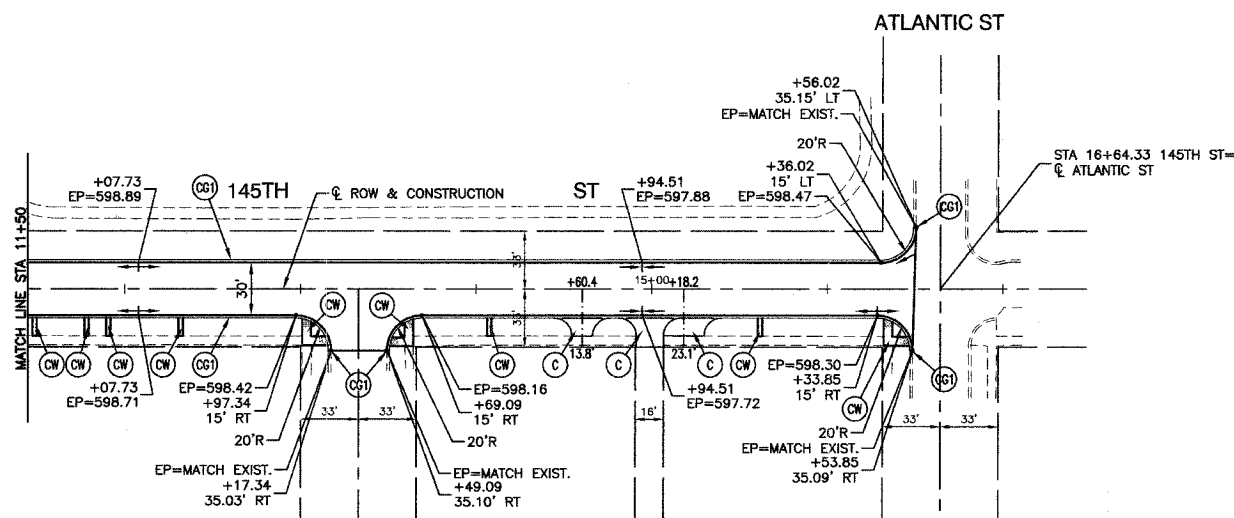
**ROBINSON ENGINEERING, LTD.**  
1700 SOUTH PARK AVENUE, SOUTH HAVEN, ILLINOIS 60073  
(708) 381-6700 FAX (708) 381-3625  
ILLINOIS DESIGN FIRM REGISTRATION NO. 19400126 04185-PLPR-01

F. A. L. NO.	SECTION	COUNTY	TOTAL SHEETS	SHEET NO.
	03-00108-00-PK	COOK	025	011
STA. 11+50		TO STA. 17+64.33		
FED. ROAD DIST. NO.	ILLINOIS	FED. AID PROJECT		

CONTRACT NO. 83912



EXISTING CONDITIONS



PROPOSED IMPROVEMENT



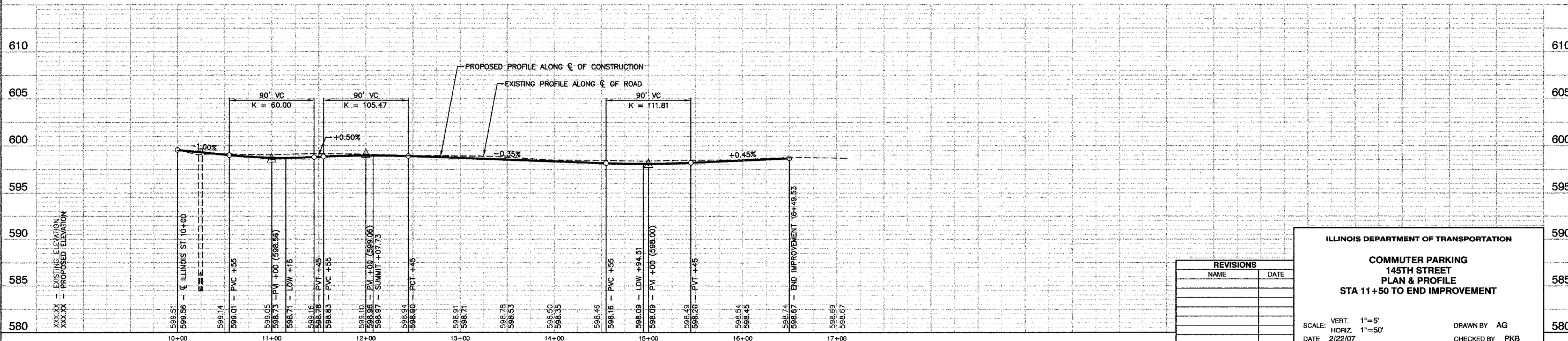
LEGEND

- ⊗ TREE TO BE REMOVED
- CONC CURB AND GUTTER REMOVAL
- ▨ BITUMINOUS PAVEMENT REMOVAL (PAID AS EARTH EXCAVATION)
- ▤ CONCRETE REMOVAL
- DETECTABLE WARNINGS
- ⊙ P.C.C. SIDEWALK, 5"
- ⊙ P.C.C. DRIVEWAY, 8"
- ⊙ HOT-MIX ASPHALT DRIVEWAY  
HOT-MIX ASPHALT BASE COURSE, 6"  
HOT-MIX ASPHALT SURFACE COURSE, MIX "C", N50, 2"
- ⊙ ALLEY  
HOT-MIX ASPHALT BASE COURSE, 6"  
HOT-MIX ASPHALT SURFACE COURSE, MIX "C", N50, 2"
- ⊙ C & G TYPE B-6.12
- ⊙ 10' TRANSITION FROM C & G TYPE B-6.12 TO EXISTING CURB AND GUTTER

NOTE: DETECTABLE WARNINGS SHALL BE INSTALLED PER HIGHWAY STANDARD 424001 AT ALL STREET CROSSINGS WHERE SIDEWALK IS REPLACED.

BENCH MARK

SQUARE CUT IN BACK OF WALK AT ALLEY RETURN AT THE NORTHEAST CORNER OF RESIDENCE #14501 SCHOOL STREET.  
ELEVATION = 598.71 NGVD 29 (FEMA)



REVISIONS	
NAME	DATE

ILLINOIS DEPARTMENT OF TRANSPORTATION

**COMMUTER PARKING  
145TH STREET  
PLAN & PROFILE  
STA 11+50 TO END IMPROVEMENT**

SCALE: VERT. 1"=5'  
HORIZ. 1"=50'

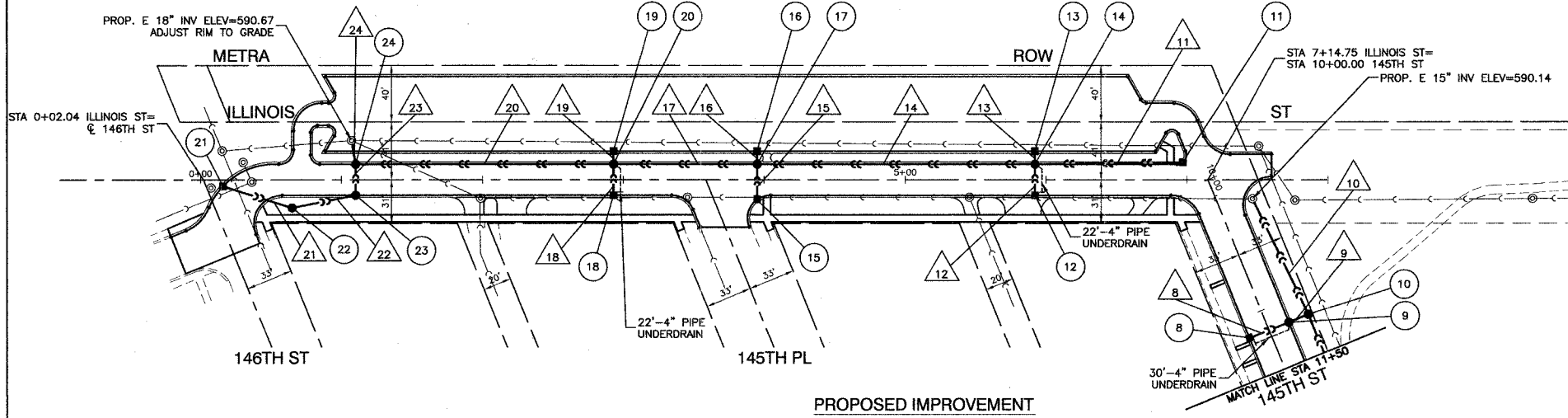
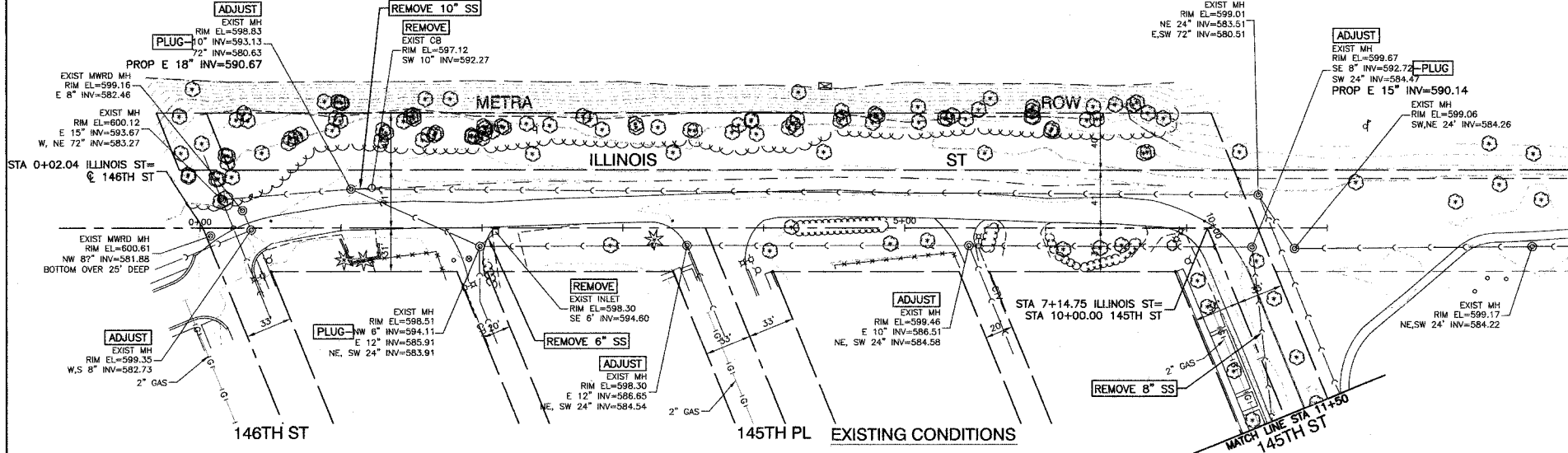
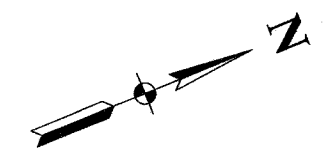
DATE 2/22/07

DRAWN BY AG  
CHECKED BY PKB

SECTION 4, TOWNSHIP 36, RANGE 14

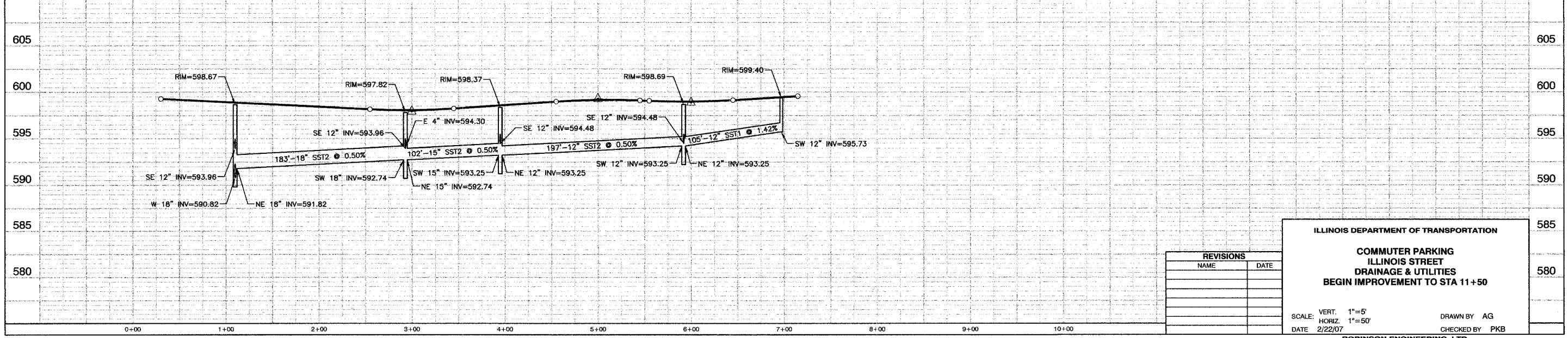
F.A.L. NO.	SECTION	COUNTY	TOTAL SHEETS	SHEET NO.
03-00108-00-PK	COOK	025	012	
STA. 0+00	TO STA. 11+50			
FED. ROAD DIST. NO.	ILLINOIS	FED. AID PROJECT		

CONTRACT NO. 83912



8	STA. 11+15, 15'RT INLET TA T11F&G RIM ELEV=598.38 N 12" INV=594.74	14	STA. 5+92, 11'LT CB TA 4'DIA. T11F&G RIM ELEV=598.69 E 4" INV = 595.19 NW 12" INV=595.00 SE 12" INV=594.49 NE-SW 12" INV=594.23	20	STA. 2+93, 11'LT CB TA 4'DIA. T11F&G RIM ELEV=597.82 E 4" INV = 594.30 NW 12" INV=594.50 SE 12" INV=593.96 NE 15" INV=592.74 SW 18" INV=592.74	8	30'-12" SST2 @ 1% (5.2)
9	STA. 11+15, 15'LT CB TA 4'DIA. T11F&G RIM ELEV=598.54 N-S 12" INV=594.34	15	STA. 3+95, 14.04'RT INLET TA T11F&G RIM ELEV=598.37 NW 12" INV=594.70	21	STA. 0+23, 5'RT INLET TA T11F&G RIM ELEV=598.75 NE 12" INV=595.08	9	15'-12" SST2 @ 4.8% (0.9)
10	STA. 11+15, 30'LT CB TA 4'DIA. T1F CL WITH HALF TRAP RIM ELEV=598.95 S 12" INV=594.19 E 15" INV=591.03 W 15" INV=590.50	16	STA. 3+95, 20'LT INLET TA T11F&G RIM ELEV=598.87 SE 12" INV=595.37	22	STA. 0+65, 20'RT CB TA T8C RIM ELEV=598.30 SW-N 12" INV=594.63	10	90'-15" SST2 @ 0.40% (0)
11	STA. 6+97, 12.36'LT INLET TA T11F&G RIM ELEV=599.40 SW 12" INV=595.73	17	STA. 3+95, 11'LT CB TA 4'DIA. T11F&G RIM ELEV=598.37 NW 12" INV=595.00 SE 12" INV=594.48 NE 12" INV=593.25 SW 15" INV=593.25	23	STA. 1+10, 11'RT CB TA 4'DIA. T11F&G RIM ELEV=598.67 S-NW 12" INV=594.18	11	105'-12" SST1 @ 1.42% (20.4)
12	STA. 5+92, 11'RT INLET TA T11F&G RIM ELEV=598.69 N 12" INV=595.19	18	STA. 2+93, 11'RT INLET TA T11F&G RIM ELEV=597.82 NW 12" INV=594.18	24	STA. 1+10, 11'LT CB TA 4'DIA. T11F&G WITH HALF TRAP RIM ELEV=598.67 SE 12" INV=593.96 NE 18" INV=591.82 W 18" INV=590.82	12	22'-12" SST1 @ 3.1% (3.1)
13	STA. 5+92, 20'LT INLET TA T11F&G RIM ELEV=599.15 SE 12" INV=595.65	19	STA. 2+93, 20'LT INLET TA T11F&G RIM ELEV=598.35 SE 12" INV=594.85			13	9'-12" SST1 @ 10% (0.8)
						14	197'-12" SST2 @ 0.50% (52.8)
						15	25'-12" SST1 @ 1% (3.6)
						16	9'-12" SST1 @ 6.1% (0.8)
						17	102'-15" SST2 @ 0.50% (31.1)
						18	22'-12" SST1 @ 1% (2.9)
						19	9'-12" SST1 @ 5.8% (0.8)
						20	183'-18" SST2 @ 0.50% (109.8)
						21	45'-12" SST1 @ 1% (6.8)
						22	22'-12" SST1 @ 1% (4.3)
						23	22'-12" SST2 @ 1% (3.5)
						24	18'-18" SST2 @ 0.80% (19.1)

**BENCH MARK**  
SQUARE CUT IN BACK OF WALK AT ALLEY RETURN AT THE NORTHEAST CORNER OF RESIDENCE #14501 SCHOOL STREET.  
ELEVATION = 598.71 NGVD 29 (FEMA)



REVISIONS	
NAME	DATE

**ILLINOIS DEPARTMENT OF TRANSPORTATION**

**COMMUTER PARKING  
ILLINOIS STREET  
DRAINAGE & UTILITIES  
BEGIN IMPROVEMENT TO STA 11+50**

SCALE: VERT. 1"=5'  
HORIZ. 1"=50'

DATE 2/22/07

DRAWN BY AG  
CHECKED BY PKB

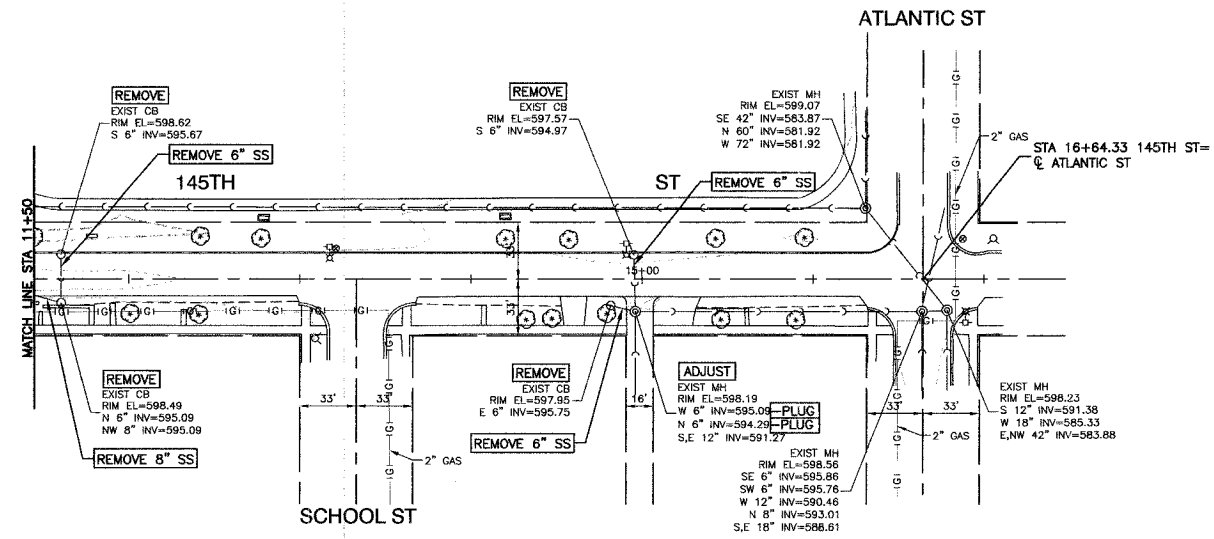
**ROBINSON ENGINEERING, LTD.**  
1700 SOUTH PARK AVENUE SOUTH HOLLAND, ILLINOIS 60473  
(708) 351-6700 FAX (708) 351-3600  
ILLINOIS DESIGN FIRM REGISTRATION NO. 184801-128

04185-STRM-01

SECTION 4, TOWNSHIP 36, RANGE 14

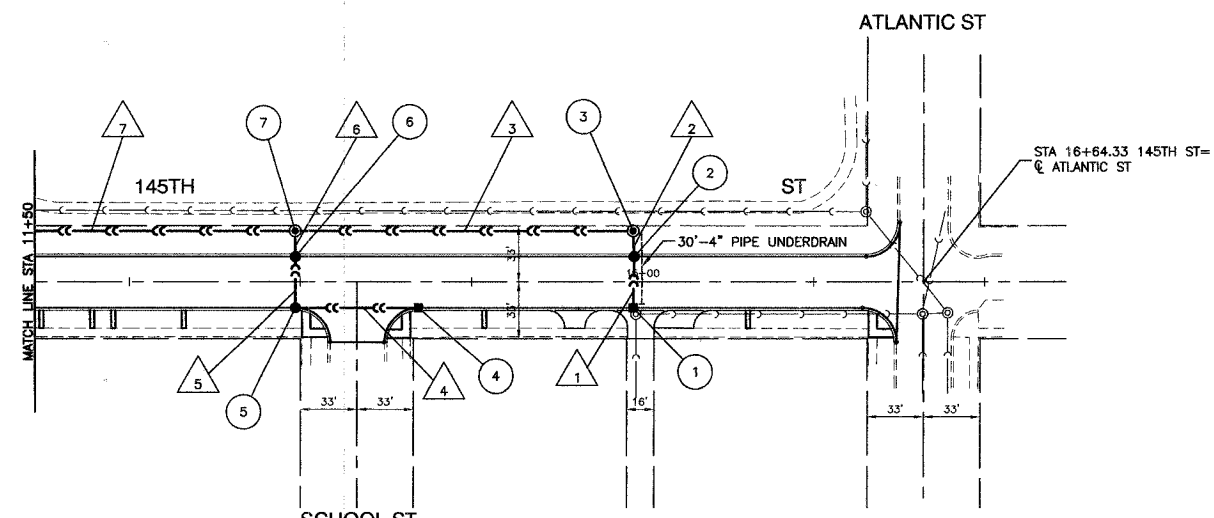
F.A.S. NO.	SECTION	COUNTY	TOTAL SHEETS	SHEET NO.
03-00108-00-PK	COOK	025	013	
STA. 11+50		TO STA. 17+64.33		
FED. ROAD DIST. NO.	ILLINOIS	FED. AID PROJECT		

CONTRACT NO. 83912



EXISTING CONDITIONS

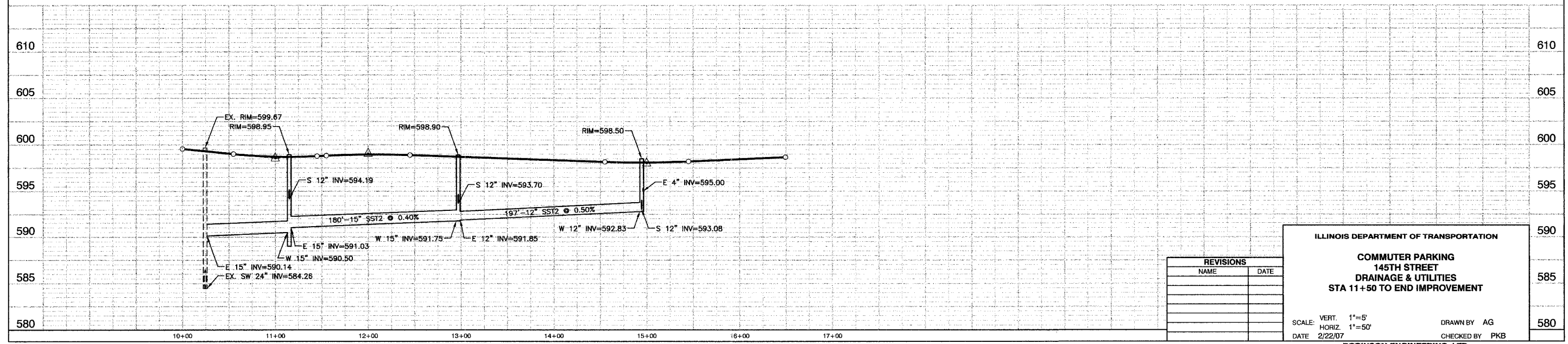
- 1 STA. 14+94.51, 15'RT  
INLET TA T11F&G  
RIM ELEV=597.72  
N 12" INV=594.12
- 2 STA. 14+95, 15'LT  
CB TA 4'DIA. T11F&G  
RIM ELEV=597.72  
N-S 12" INV=593.15
- 3 STA. 14+94.51, 30'LT  
MH TA 4'DIA. T1F CL  
RIM ELEV=598.50  
SE 4" INV=595.00  
S 12" INV=593.08  
W 12" INV=592.83
- 4 STA. 13+69.09, 15'RT  
INLET TA T11F&G  
RIM ELEV=598.16  
W 12" INV=594.49
- 5 STA. 12+97, 15'RT  
CB TA T11F&G  
RIM ELEV=598.42  
E-N 12" INV=594.17
- 6 STA. 12+97, 15'LT  
CB TA 4'DIA. T11F&G  
RIM ELEV=598.58  
S-N 12" INV=593.89
- 7 STA. 12+97, 30'LT  
MH TA 4'DIA. T1F CL  
RIM ELEV=598.90  
S 12" INV=593.70  
E 12" INV=591.85  
W 15" INV=591.75



PROPOSED IMPROVEMENT

- 1 30'-12" SST2 @ 3.2% (6.0)
- 2 15'-12" SST2 @ 0.50% (1.0)
- 3 197'-12" SST2 @ 0.50% (0)
- 4 72'-12" SST1 @ 0.44% (13.2)
- 5 30'-12" SST2 @ 0.93% (7.1)
- 6 15'-12" SST2 @ 1.26% (1.1)
- 7 180'-15" SST2 @ 0.40% (0)

**BENCH MARK**  
 SQUARE CUT IN BACK OF WALK AT ALLEY RETURN  
 AT THE NORTHEAST CORNER OF RESIDENCE #14501  
 SCHOOL STREET.  
 ELEVATION = 598.71 NGVD 29 (FEMA)



REVISIONS	
NAME	DATE

**ILLINOIS DEPARTMENT OF TRANSPORTATION**

**COMMUTER PARKING  
 145TH STREET  
 DRAINAGE & UTILITIES  
 STA 11+50 TO END IMPROVEMENT**

SCALE: VERT. 1"=5'  
 HORIZ. 1"=50'  
 DATE 2/22/07

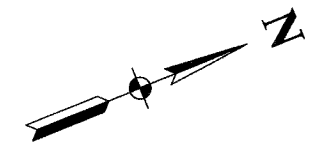
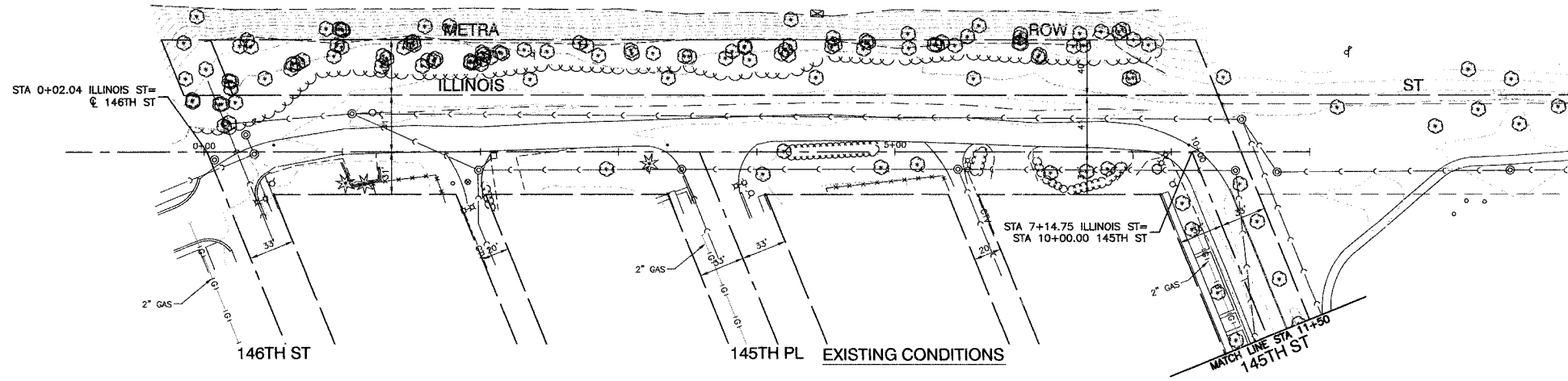
DRAWN BY AG  
 CHECKED BY PKB

**ROBINSON ENGINEERING, LTD.**  
 17000 SOUTH PARK AVENUE SOUTH HOLLAND, ILLINOIS 60473  
 (708) 551-6700 FAX (708) 591-0800  
 ILLINOIS DESIGN FIRM REGISTRATION NO. 150011228 04185-STRM-01

SECTION 4, TOWNSHIP 36, RANGE 14

F.A.S. NO.	SECTION	COUNTY	TOTAL SHEETS	SHEET NO.
03-00108-00-PK	COOK	025	014	
STA.	TO STA.			
FED. ROAD DIST. NO.	ILLINOIS	FED. AID PROJECT		

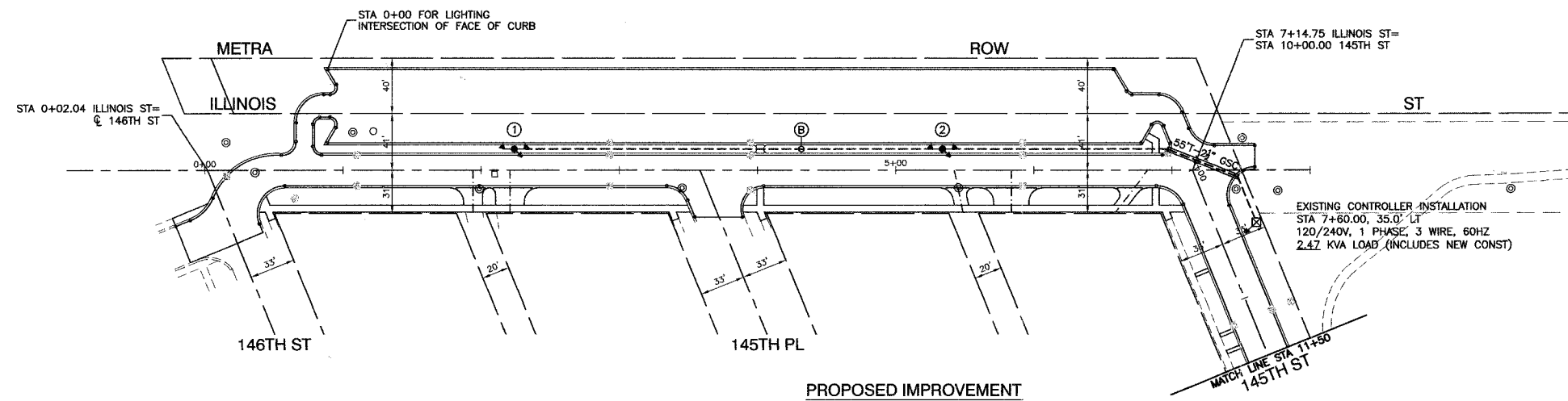
CONTRACT NO. 83912



FLOODLIGHTING DETAILS

POLE #	LOCATION (X,Y)	MH	LAT. AIM ANGLE	VERT. AIM ANGLE
1	57.5,135	40'	A 222.5	A 70
			B 317.5	B 70
2	57.5,445	40'	A 222.5	A 70
			B 317.5	B 70

NOTE: FOR LATERAL AIMING ANGLES, 0° IS DUE NORTHEASTERLY (PARALLEL W/FACE OF CURB)  
 FOR VERTICAL AIMING ANGLES, 0° IS BASE OF POLE  
 STA.0+00 FOR FLOODLIGHT POLES IS STA. 0+90.0, 73.0' LT OF C. OF ILLINOIS STREET.



LEGEND

- ALUMINUM POLE, 40' MH, W/TWIN MOUNT 150 WATT HPS FLOODLIGHTS (BLACK FINISH)
- CONTROL CABINET (EXISTING)
- CIRCUIT
- ELECTRIC CABLE IN UNIT DUCT, 2-1/C NO. 6 AND 1/C NO. 6 GROUND IN 1-1/2" DIA. POLYETHYLENE
- GALVANIZED STEEL CONDUIT, IN TRENCH
- POLE NUMBER
- GROUND ROD, 5/8" DIA. x 10'

BENCH MARK

SQUARE CUT IN BACK OF WALK AT ALLEY RETURN AT THE NORTHEAST CORNER OF RESIDENCE #14501 SCHOOL STREET.  
 ELEVATION = 598.71 NGVD 29 (FEMA)

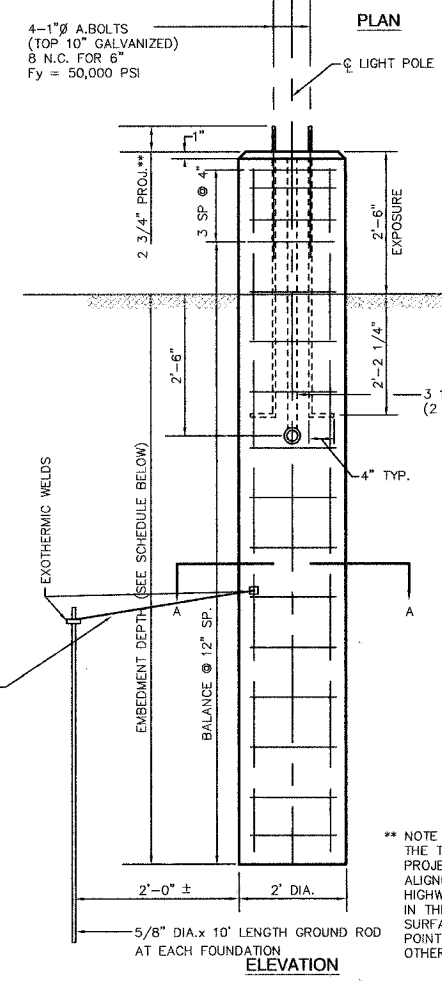
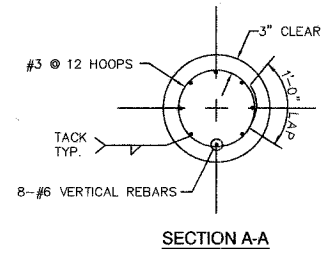
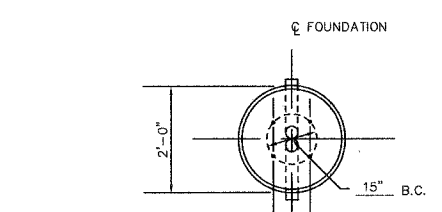
REVISIONS	
NAME	DATE

ILLINOIS DEPARTMENT OF TRANSPORTATION  
 COMMUTER PARKING  
 LIGHTING PLAN

SCALE: VERT. 1"=50'  
 HORIZ. 1"=50'  
 DATE 2/22/07  
 DRAWN BY RG  
 CHECKED BY PKB

F.A.M. NO.	SECTION	COUNTY	TASK SHEETS	SHEET NO.
03-00108-00-PK	COOK	025	015	
STA.	TO STA.			
FED. ROAD DIST. NO.	ILLINOIS	FED. ROAD PROJECT		

CONTRACT NO. 83912

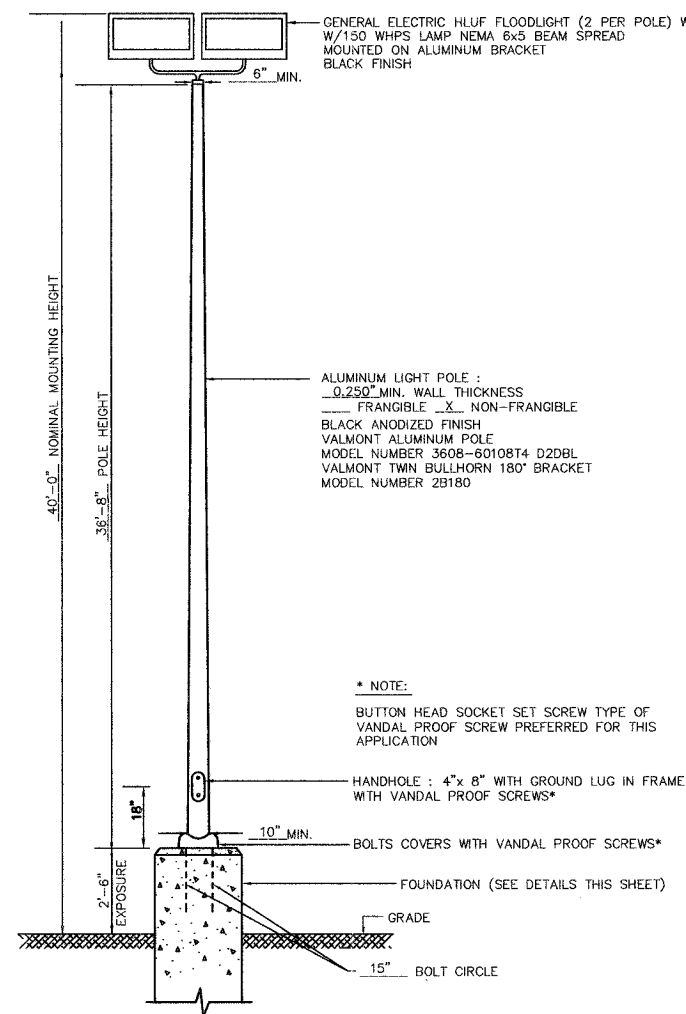


LIGHT POLE FOUNDATION (TYPICAL)

- NOTE:
1. CONCRETE SHALL BE 3500 PSI AT 14 DAYS. (CLASS ST)
  2. REINFORCING BARS SHALL BE OF NEW BILLET STEEL (ASTM A615) HAVING  $F_y = 60,000$  PSI AND DEFORMED (ASTM A307)
  3. HOLE FOR THE FOUNDATION SHALL BE AUGERED

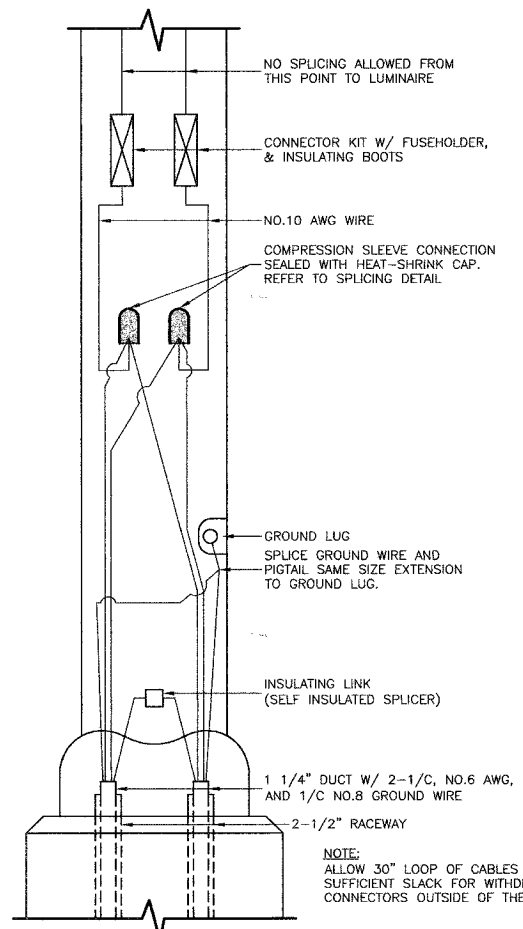
\*\* NOTE  
THE TOP OF THE ANCHOR BOLTS SHOULD NOT PROJECT MORE THAN 4" ABOVE A 60" CHORD ALIGNED RADIALLY TO THE CENTERLINE OF THE HIGHWAY AND CONNECTING ANY POINT WITHIN THE LENGTH OF THE CHORD, ON THE GROUND SURFACE ON ONE SIDE OF THE SUPPORT TO A POINT ON THE GROUND SURFACE ON THE OTHER SIDE.

LUMINAIRE:  
150 OR \_\_\_\_\_ WATT HIGH PRESSURE SODIUM LAMP  
240 VOLT BALLAST  
I.E.S. TYPE: \_\_\_\_\_ LIGHT DISTRIBUTION  
LENS TYPE: \_\_\_\_\_ FLAT OR \_\_\_\_\_ BUBBLE  
INITIAL LAMP LUMENS: 16,000  
LAMP LIFE: 24,000 HOURS



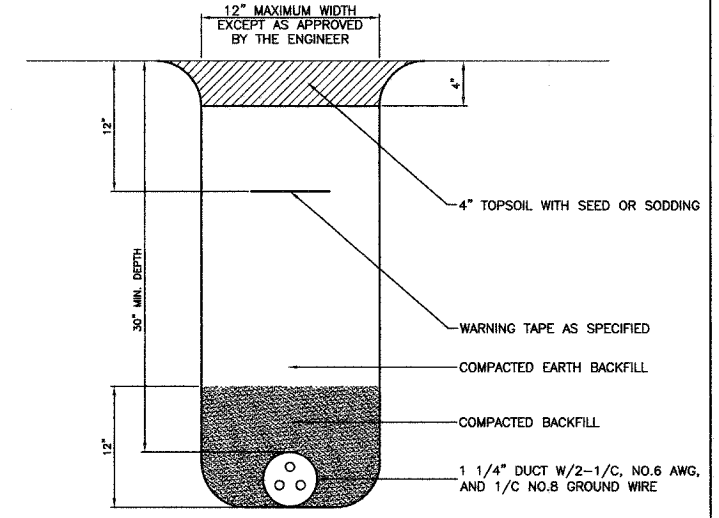
TYPICAL POLE INSTALLATION

\* NOTE:  
BUTTON HEAD SOCKET SET SCREW TYPE OF VANDAL PROOF SCREW PREFERRED FOR THIS APPLICATION

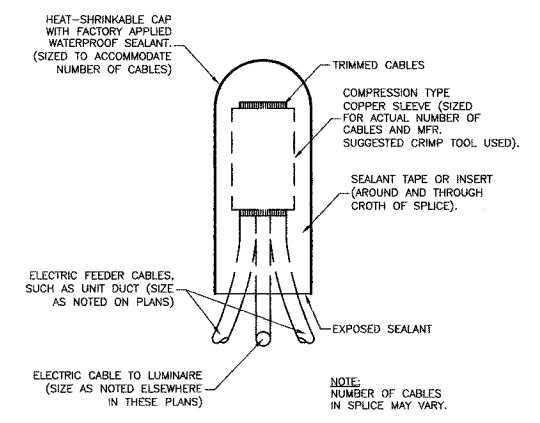


POLE HANDHOLE WIRING DIAGRAM

NOTE:  
ALLOW 30" LOOP OF CABLES TO INSURE SUFFICIENT SLACK FOR WITHDRAWAL OF THE CONNECTORS OUTSIDE OF THE POLE HANDHOLE.



TRENCH DETAIL FOR ELECTRIC CABLE



SPlicing ELECTRIC CABLES BASIC MATERIALS AND METHODS

FOUNDATION SCHEDULE						
DESCRIPTION	TYPE OF SOILS	STANDARDS	EMBEDMENT			
			MOUNTING HEIGHT			
			30 FT.	37.5 FT.	40 FT.	50 FT.
SOFT CLAY	$Q_u = .25-.50$	T/FT. <sup>2</sup>	9'-0"	9'-8"	10'-6"	14'-0"
MEDIUM CLAY	$Q_u = .50-1.0$	T/FT. <sup>2</sup>	6'-6"	7'-0"	7'-6" *	10'-0"
DENSE CLAY	$Q_u = 1.0-2.0$	T/FT. <sup>2</sup>	5'-6"	6'-0"	6'-6"	8'-6"
LOOSE SAND	N = 4-10		7'-0"	7'-8"	8'-4"	11'-0"
MEDIUM SAND	N = 10-30		6'-0"	6'-6"	7'-3"	9'-6"
DENSE SAND	N = 30-50		5'-6"	6'-0"	6'-6"	8'-6"

\* TOTAL LENGTH OF FOUNDATION:  
 $7'-6" + 2'-6" = 10'-0"$

GENERAL NOTES:

1. ALL WORK TO CONFORM TO THE NATIONAL ELECTRICAL CODE AND ANY APPLICABLE LOCAL CODES.
2. CONTRACTOR TO VERIFY LOCATION OF ALL UNDERGROUND UTILITIES BEFORE TRENCHING OR AUGERING.
3. BEFORE INSTALLING STANDARDS NEAR OVERHEAD FACILITIES CALL C.E. Co. FOR APPROVAL OF LOCATION.
4. FOR LOCATION OF EXISTING UNDERGROUND ELECTRICAL CABLE CALL C.E. Co.
5. ALL CONDUIT TO BE 2 1/2" DIAMETER UNLESS OTHERWISE SPECIFIED.

REVISIONS	
NAME	DATE

ILLINOIS DEPARTMENT OF TRANSPORTATION

**COMMUTER PARKING LIGHTING DETAILS**

SCALE: VERT. \_\_\_\_\_  
HORIZ. NONE

DATE: 2/22/07

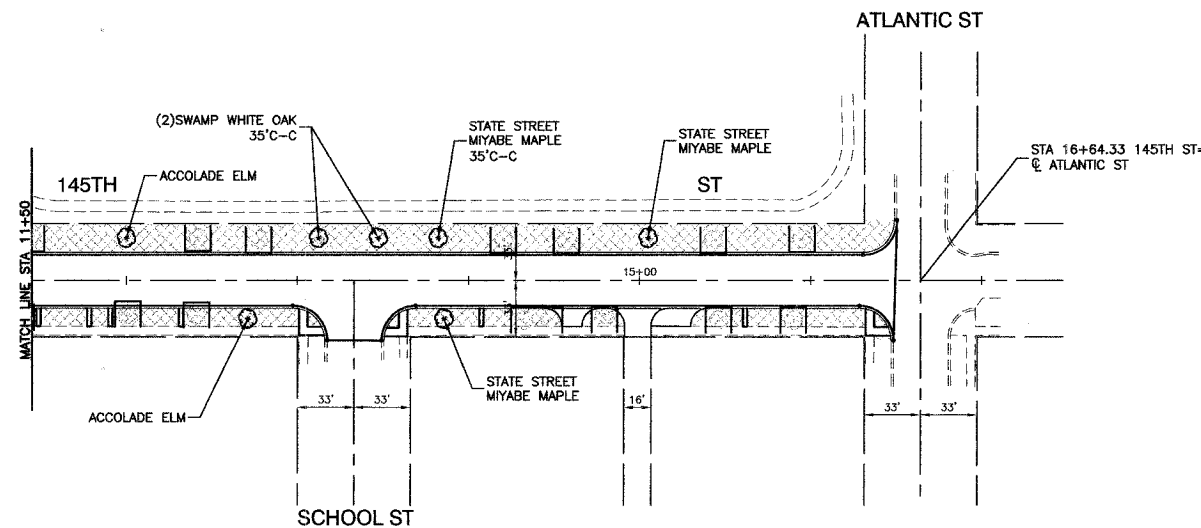
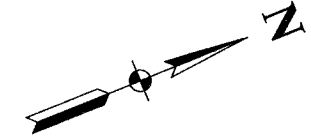
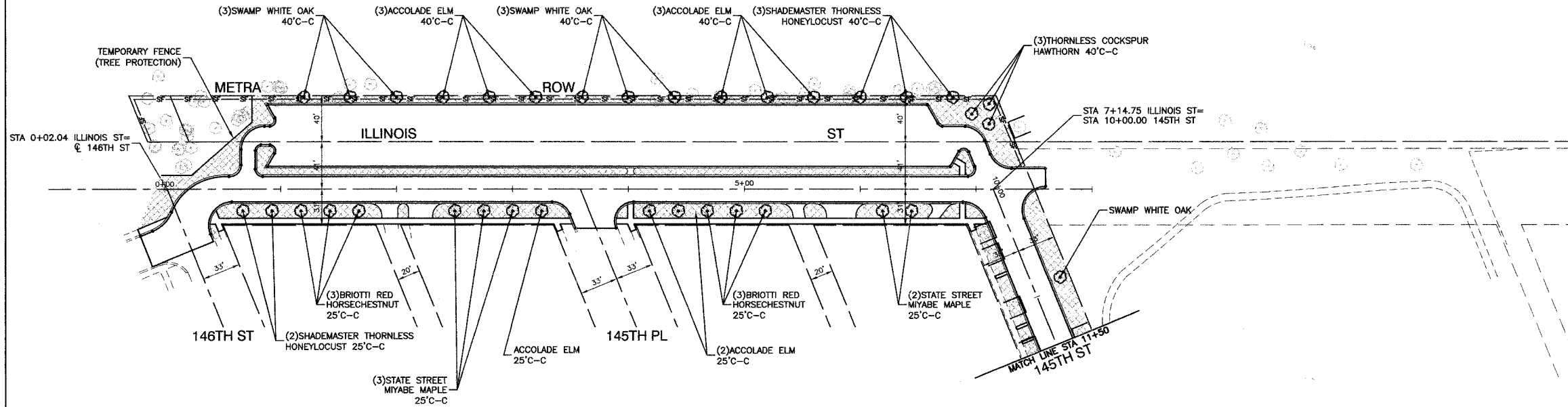
DRAWN BY: FG  
CHECKED BY: PKB

ROBINSON ENGINEERING, LTD.  
17000 SOUTH PARK AVENUE, SOUTH HOLLAND, ILLINOIS 60473  
(708) 381-4100 FAX: (708) 381-0269  
ILLINOIS DESIGN FIRM REGISTRATION NO. 154001128

SECTION 4, TOWNSHIP 36, RANGE 14

F. A. L. FILE	SECTION	COUNTY	TOTAL SHEETS	SHEET NO.
	03-00108-00-PK	COOK	025	016
STA.	TO STA.			
FED. ROAD DIST. NO.	ILLINOIS	FED. AID PROJECT		

CONTRACT NO. 83912



KEY	ITEM NAME
—SF—SF—	SEDIMENT CONTROL, SILT FENCE
	TOPSOIL, FURNISH AND PLACE, 4" SODDING, SALT TOLERANT
	TEMPORARY FENCE (TREE PROTECTION)

REVISIONS	
NAME	DATE

ILLINOIS DEPARTMENT OF TRANSPORTATION

**COMMUTER PARKING  
LANDSCAPING AND  
TREE PROTECTION PLAN**

SCALE: VERT. 1"=50'  
DATE: 2/22/07

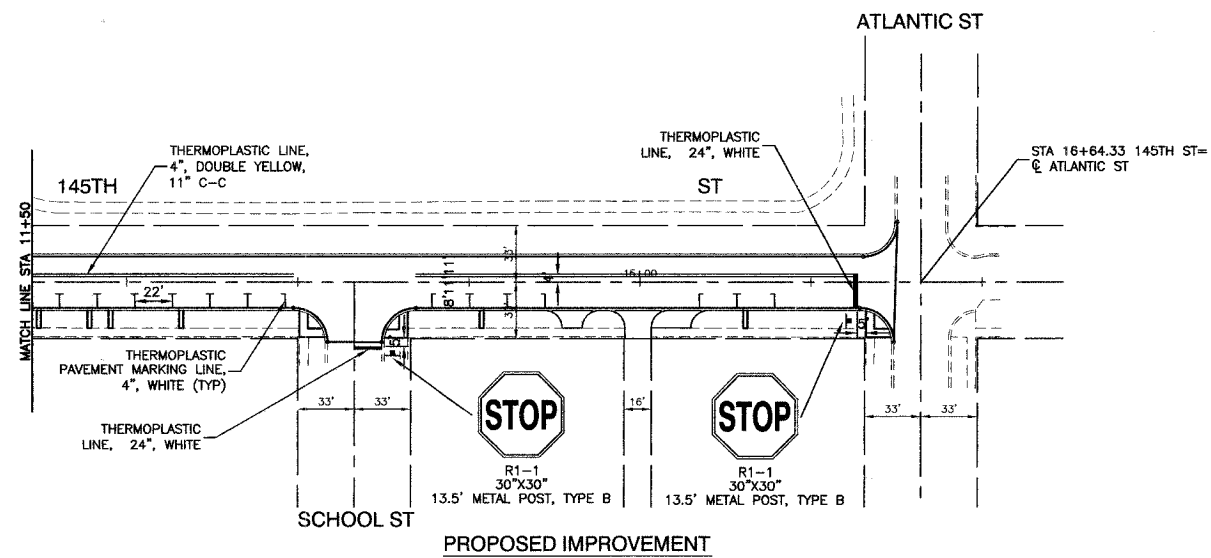
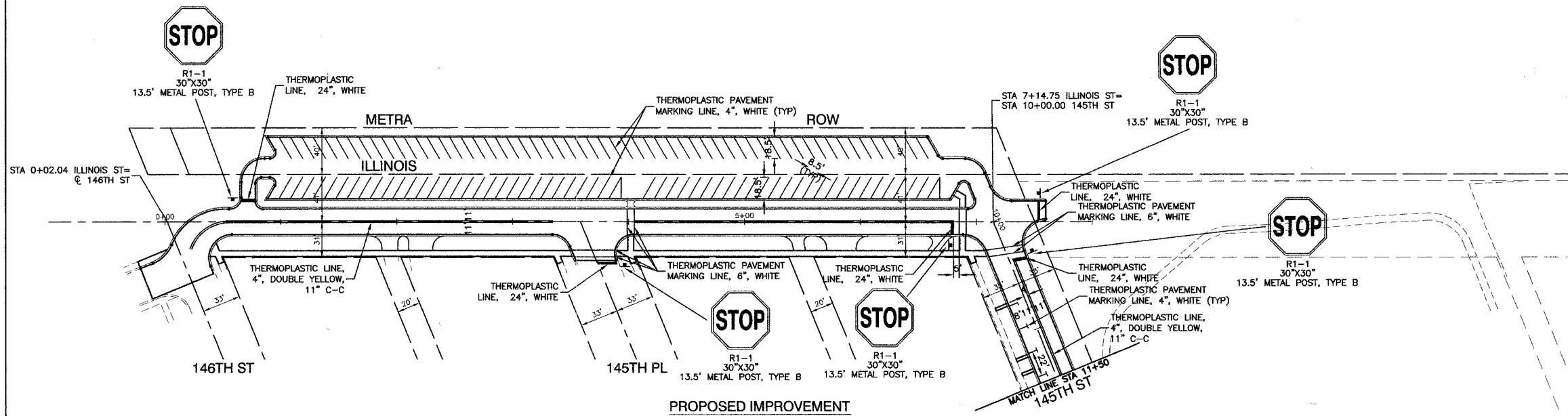
DRAWN BY: AG/RG  
CHECKED BY: PKB

**ROBINSON ENGINEERING, LTD.**  
17000 SOUTH PARK AVENUE, SOUTH HOLLAND, ILLINOIS 60473  
(708) 321-6100 FAX (708) 321-1000  
ILLINOIS DESIGN FIRM REGISTRATION NO. 104001125 04185-LNSC-01



F. A. U. SHEET	SECTION	COUNTY	TOTAL SHEETS	SHEET NO.
	03-00108-00-PK	COOK	025	017
STA.	TO STA.			
FED. ROAD DIST. NO.	ILLINOIS	FED. AID PROJECT		

CONTRACT NO. 83912



REVISIONS	
NAME	DATE

ILLINOIS DEPARTMENT OF TRANSPORTATION

**COMMUTER PARKING  
PAVEMENT MARKING AND SIGNING**

SCALE: VERT. 1"=50'  
HORIZ. 1"=50'  
DATE: 2/22/07

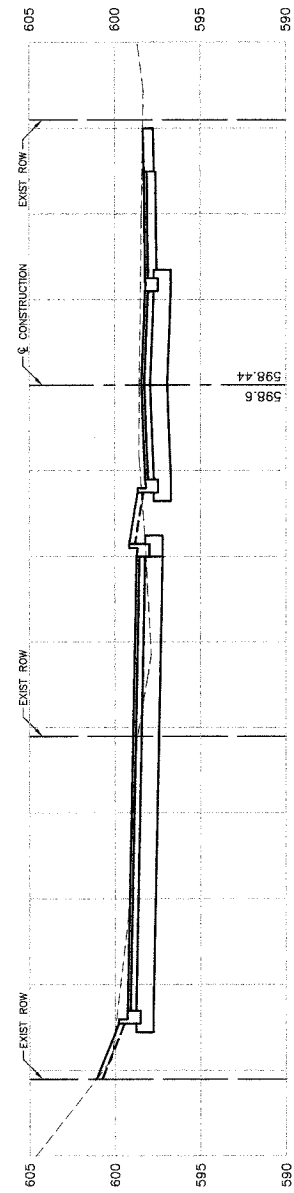
DRAWN BY: AG/RG  
CHECKED BY: PKB

ROBINSON ENGINEERING, LTD.  
17001 SOUTH PARK AVENUE, SOUTH HOLLAND, ILLINOIS 60473  
(708) 351-6700 FAX (708) 351-7669  
ILLINOIS DESIGN FIRM REGISTRATION NO. 18-001128 04185-PVMG-01

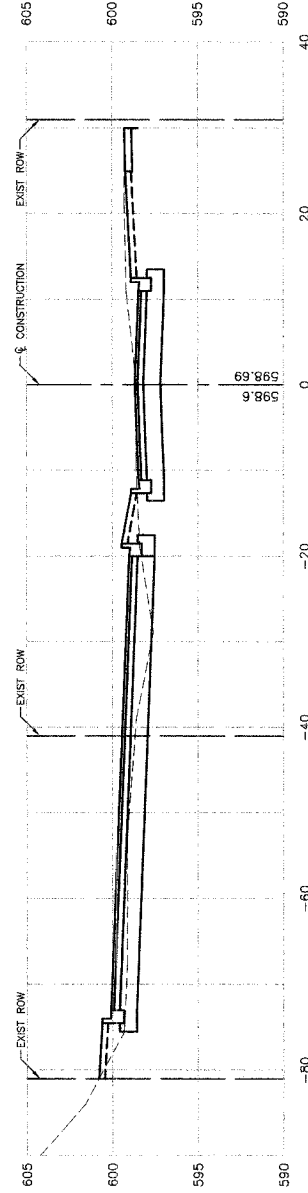
SECTION 4, TOWNSHIP 36, RANGE 14

F. A. L. NO.	SECTION	COUNTY	TOTAL SHEETS	SHEET NO.
03-00108-00-PK	COOK	025	018	
STA.	TO STA.			
FED. ROAD DIST. NO.	ILLINOIS	FED. AID PROJECT		

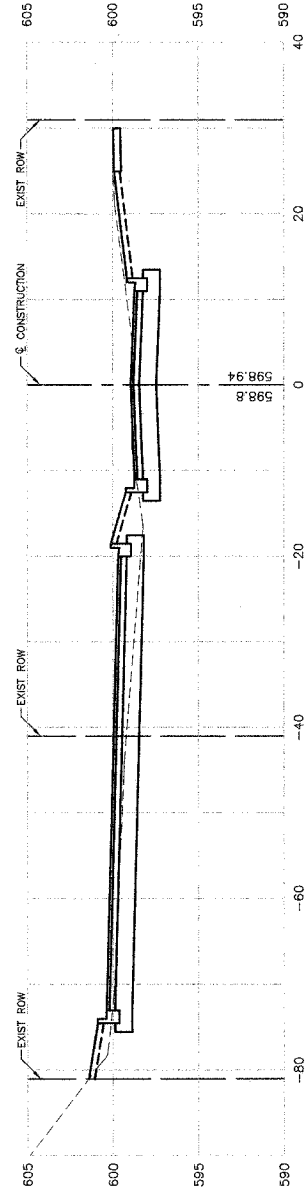
CONTRACT NO. 83912



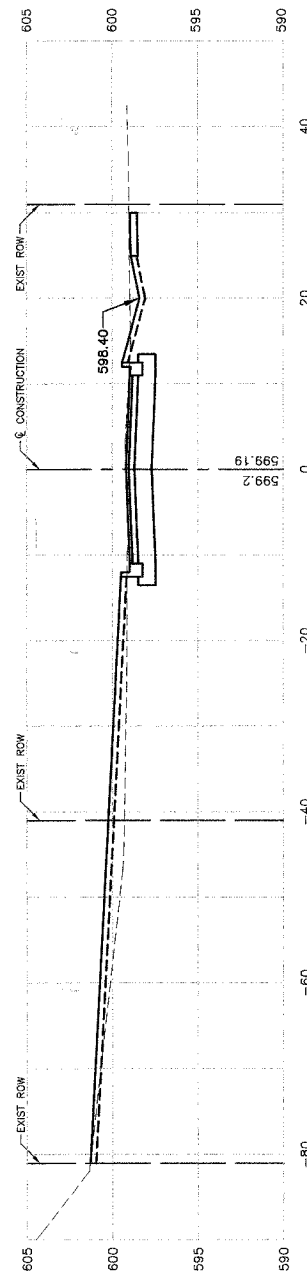
2+00  
CUT=134  
FILL=3



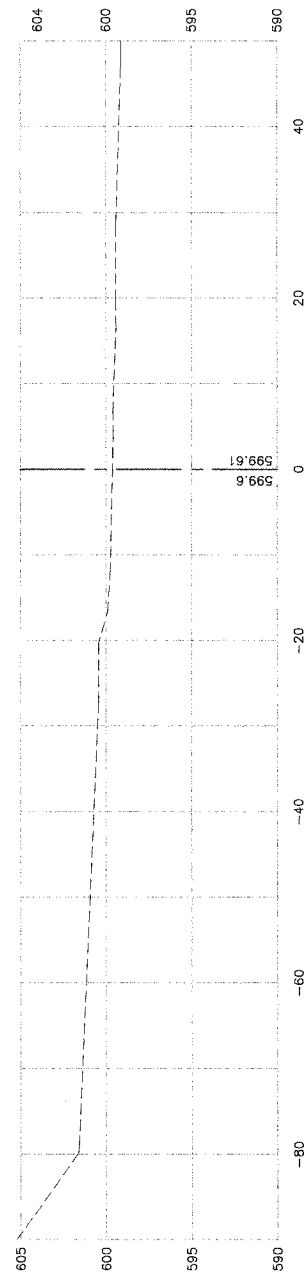
1+50  
CUT=92  
FILL=4



1+00  
CUT=94  
FILL=7



0+50  
CUT=62  
FILL=23



0+00

REVISIONS	
NAME	DATE

ILLINOIS DEPARTMENT OF TRANSPORTATION

**COMMUTER PARKING  
ILLINOIS STREET  
CROSS SECTIONS  
STA 0+00 TO STA 2+00**

SCALE: VERT. 1"=5'  
HORIZ. 1"=10'

DATE 2/22/07

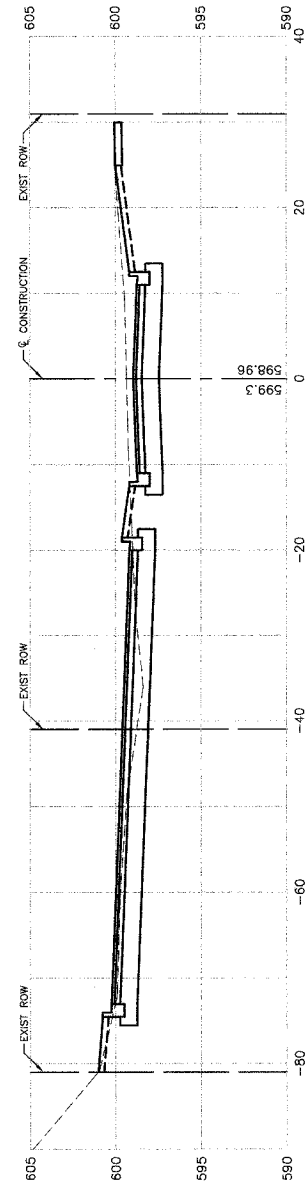
DRAWN BY AG/RG  
CHECKED BY PKB

**ROBINSON ENGINEERING, LTD.**  
17005 SOUTH PARK AVENUE SOUTH HOLLAND, ILLINOIS 60473  
708.321.4700 FAX 708.321.5299  
ILLINOIS DESIGN FIRM REGISTRATION NO. 164061128 04185-XSEC-01

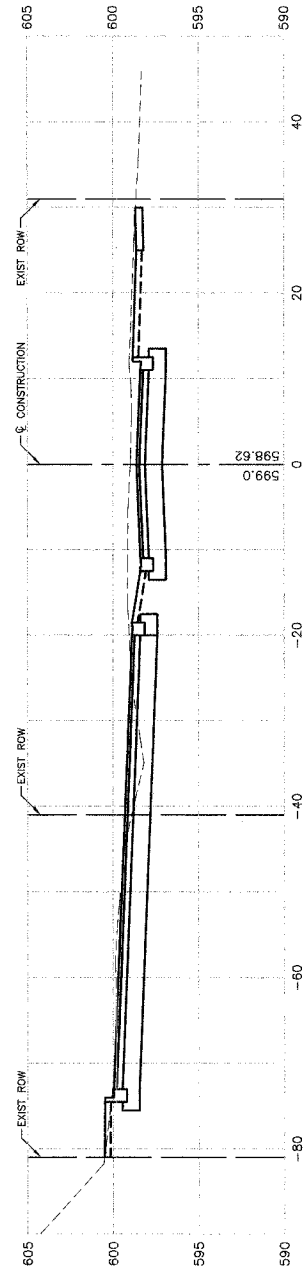
SECTION 4, TOWNSHIP 36, RANGE 14

F. A. S. NO.	SECTION	COUNTY	TOTAL SHEETS	SHEET NO.
	03-00108-00-PK	COOK	025	019
STA.	TO STA.			
FED. ROAD DIST. NO.	ILLINOIS	FED. AID PROJECT		

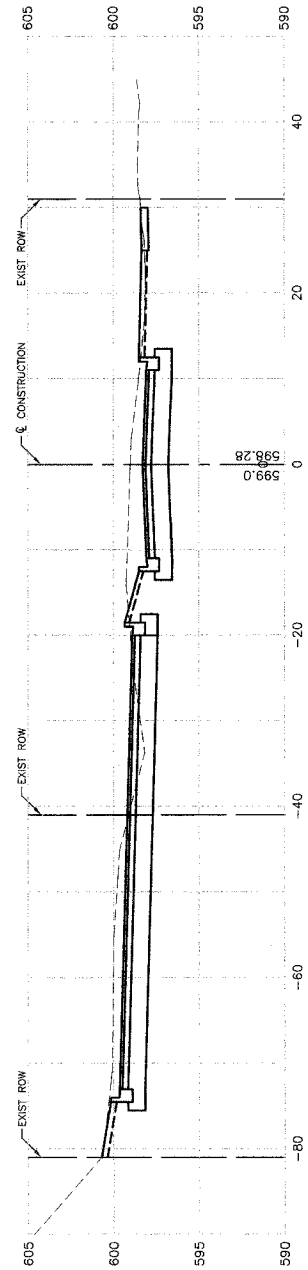
CONTRACT NO. 83912



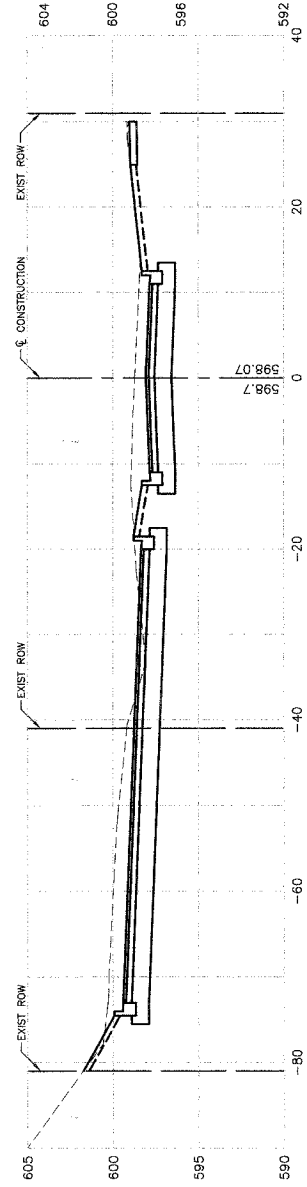
4+50  
CUT=123  
FILL=3



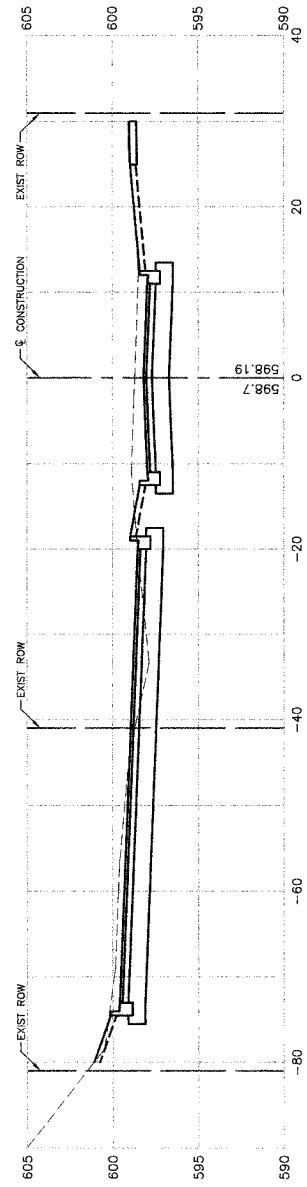
4+00  
CUT=145  
FILL=3



3+50  
CUT=163  
FILL=3



3+00  
CUT=184  
FILL=3



2+50  
CUT=154  
FILL=5

REVISIONS	
NAME	DATE

ILLINOIS DEPARTMENT OF TRANSPORTATION

**COMMUTER PARKING  
ILLINOIS STREET  
CROSS SECTIONS  
STA 2+50 TO STA 4+50**

SCALE: VERT. 1"=5'  
HORIZ. 1"=10'

DATE 2/22/07

DRAWN BY AG/RG  
CHECKED BY PKB

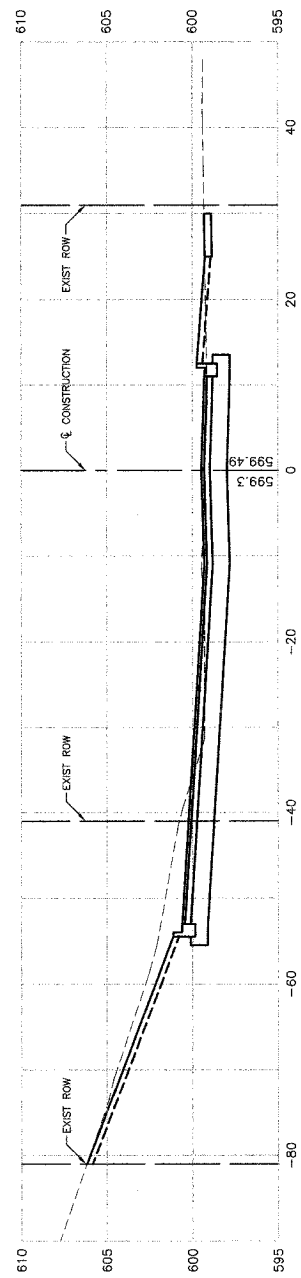
ROBINSON ENGINEERING, LTD.  
1700 SOUTH PARK AVENUE, SOUTH HOLLAND, ILLINOIS 60473  
708.324.4700 FAX 708.324.3288  
ILLINOIS DESIGN FIRM REGISTRATION NO. 184001128

04185-XSEC-01

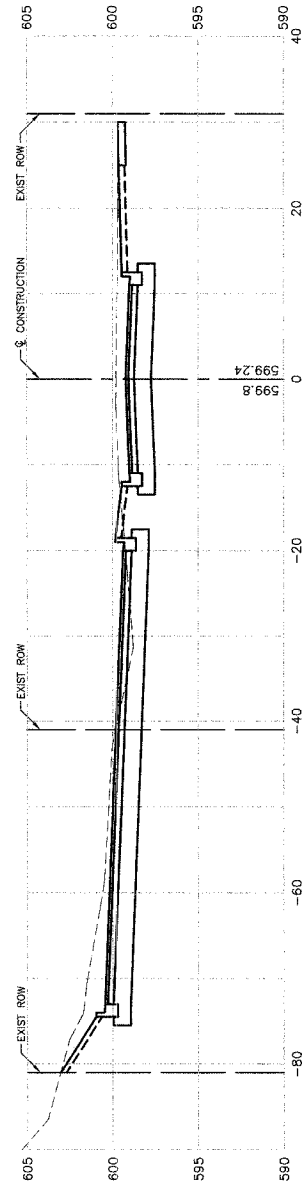
SECTION 4, TOWNSHIP 36, RANGE 14

F. A. L. R/E.	SECTION	COUNTY	TOTAL SHEETS	SHEET NO.
	03-00108-00-PK	COOK	025	020
STA.	TO STA.			
FED. ROAD DIST. NO.	ILLINOIS	FED. AID PROJECT		

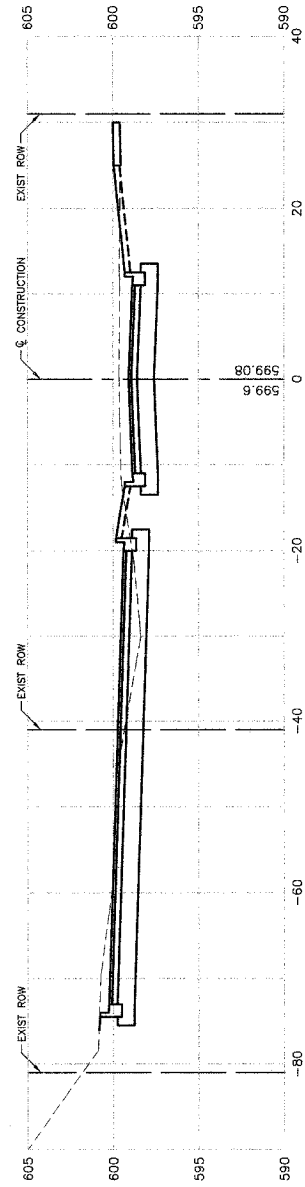
CONTRACT NO. 83912



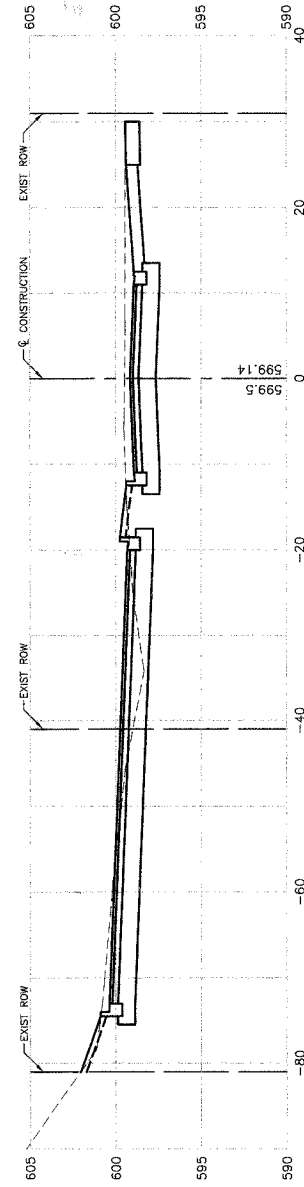
7+00  
CUT=129  
FILL=1



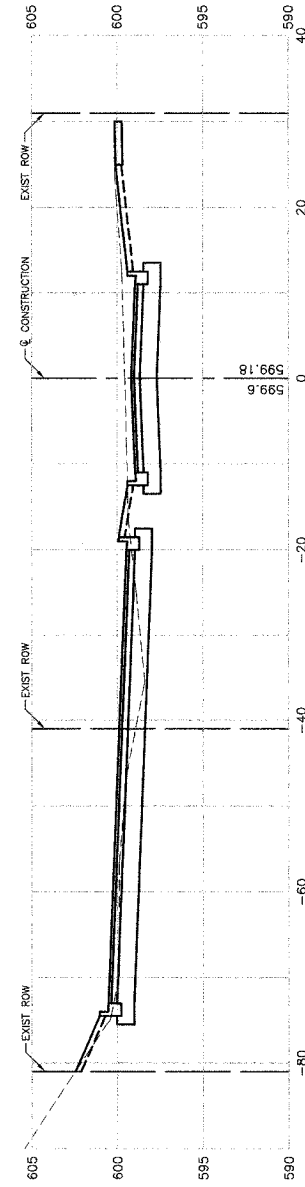
6+50  
CUT=165  
FILL=3



6+00  
CUT=135  
FILL=3



5+50  
CUT=138  
FILL=2



5+00  
CUT=114  
FILL=3

REVISIONS	
NAME	DATE

ILLINOIS DEPARTMENT OF TRANSPORTATION

**COMMUTER PARKING  
ILLINOIS STREET  
CROSS SECTIONS  
STA 5+00 TO STA 7+00**

SCALE: VERT. 1"=5'  
HORIZ. 1"=10'

DATE 2/22/07

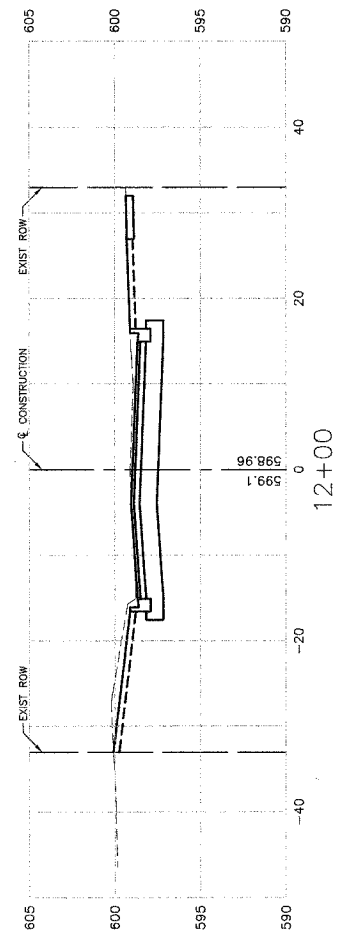
DRAWN BY AG/RG  
CHECKED BY PKB

ROBINSON ENGINEERING, LTD.  
17000 SOUTH PARK AVENUE SOUTH HOLLAND, ILLINOIS 60473  
(708) 381-4700 FAX (708) 381-1822  
ILLINOIS DESIGN FIRM REGISTRATION NO. 184001128 04185-XSEC-01

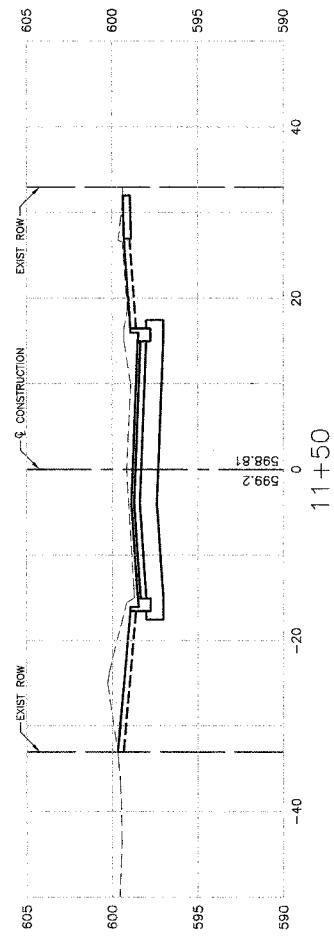
SECTION 4, TOWNSHIP 36, RANGE 14

F. A. S. NO.	SECTION	COUNTY	TOTAL SHEETS	SHEET NO.
03-00108-00-PK	COOK	025	021	
STA.	TO STA.			
FED. ROAD DIST. NO.	ILLINOIS	FED. AID PROJECT		

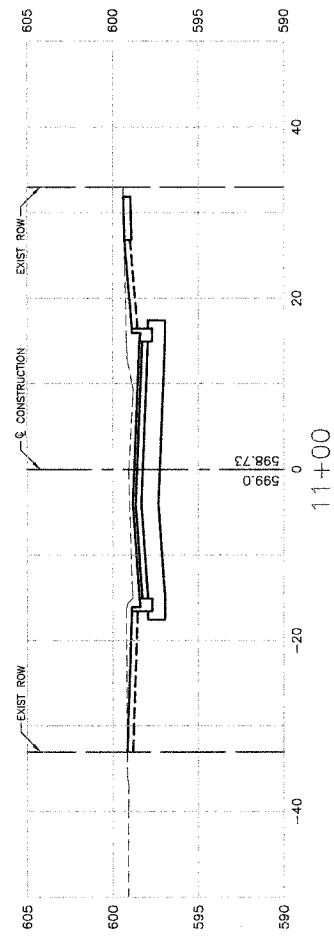
CONTRACT NO. 83912



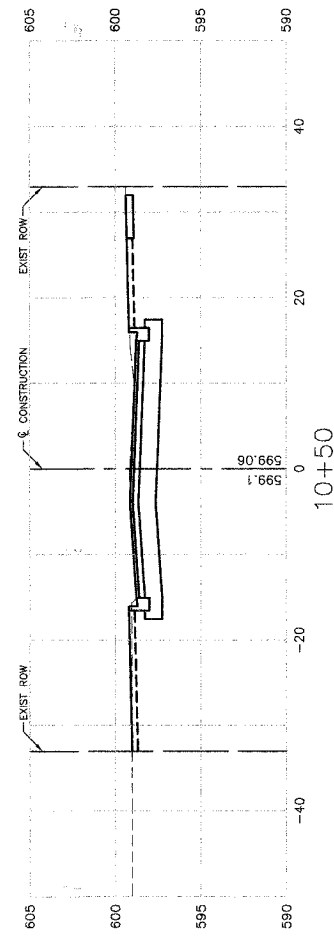
CUT=74 FILL=1



CUT=86 FILL=1



CUT=80 FILL=1



CUT=64 FILL=1

REVISIONS	
NAME	DATE

ILLINOIS DEPARTMENT OF TRANSPORTATION

**COMMUTER PARKING  
145TH STREET  
CROSS SECTIONS  
STA 10+00 TO STA 12+00**

SCALE: VERT. 1"=5'  
HORIZ. 1"=10'

DATE 2/22/07

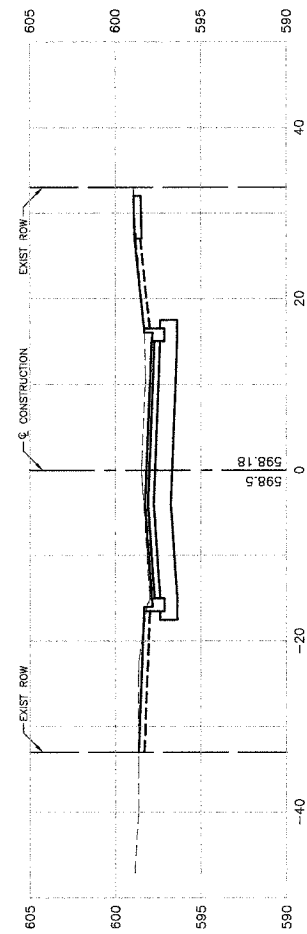
DRAWN BY AG/RG  
CHECKED BY PKB

ROBINSON ENGINEERING, LTD.  
17000 SOUTH PARK AVENUE SOUTH HOLLAND, ILLINOIS 60470  
TEL: (708) 381-4700 FAX: (708) 381-3200  
ILLINOIS DESIGN FIRM REGISTRATION NO. 184001158 04185-XSEC-01

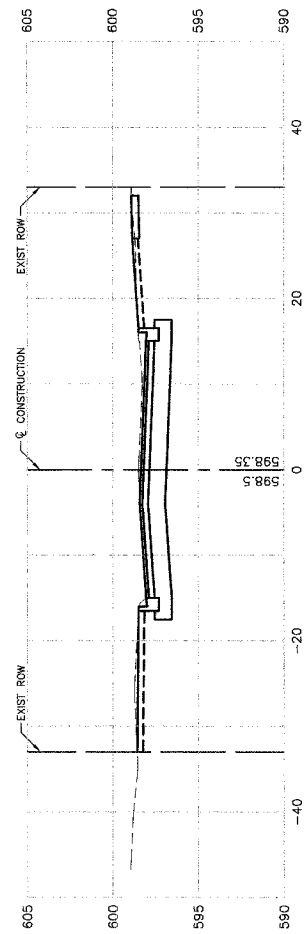
SECTION 4, TOWNSHIP 36, RANGE 14

F. A. U. NO.	SECTION	COUNTY	TOTAL SHEETS	SHEET NO.
	03-00108-00-PK	COOK	025	022
STA.	TO STA.			
FED. ROAD DIST. NO.	ILLINOIS	FED. AID PROJECT		

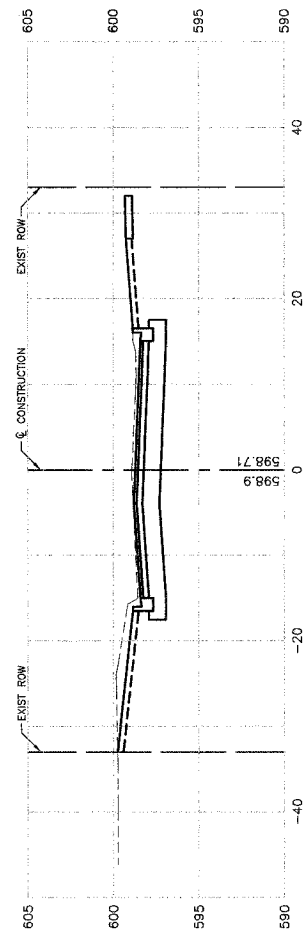
CONTRACT NO. 83912



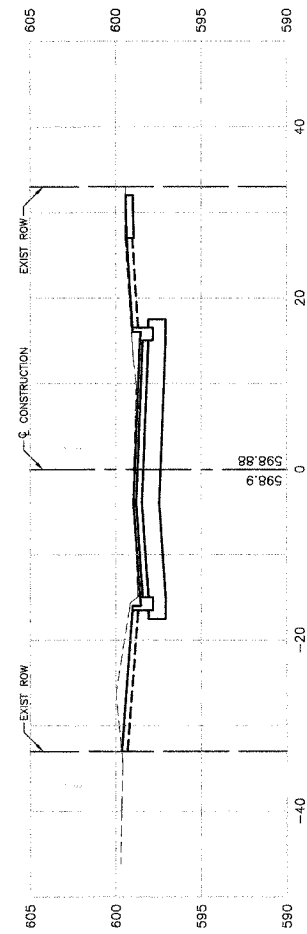
14+50  
CUT=71  
FILL=1



14+00  
CUT=68  
FILL=1



13+00  
CUT=76  
FILL=1



12+50  
CUT=75  
FILL=1

REVISIONS	
NAME	DATE

ILLINOIS DEPARTMENT OF TRANSPORTATION

**COMMUTER PARKING  
145TH STREET  
CROSS SECTIONS  
STA 12+50 TO STA 14+50**

SCALE: VERT. 1"=5'  
HORIZ. 1"=10'

DATE 2/22/07

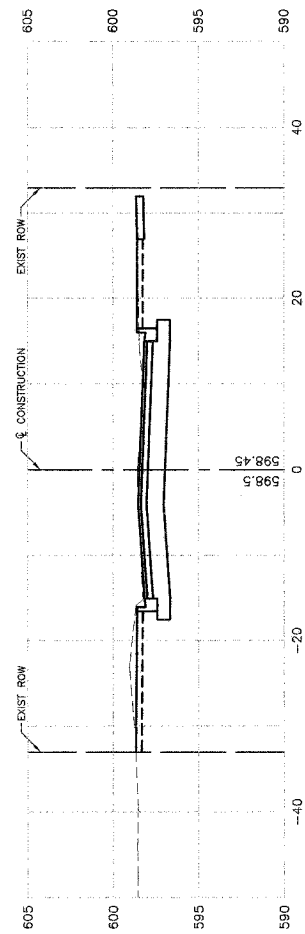
DRAWN BY AG/RG  
CHECKED BY PKB

ROBINSON ENGINEERING, LTD.  
1700N SOUTH PARK AVENUE SOUTH HOLLAND, ILLINOIS 60473  
(708) 321-4700 FAX (708) 321-3202  
ILLINOIS DESIGN FIRM REGISTRATION NO. 184001128 04185-XSEC-01

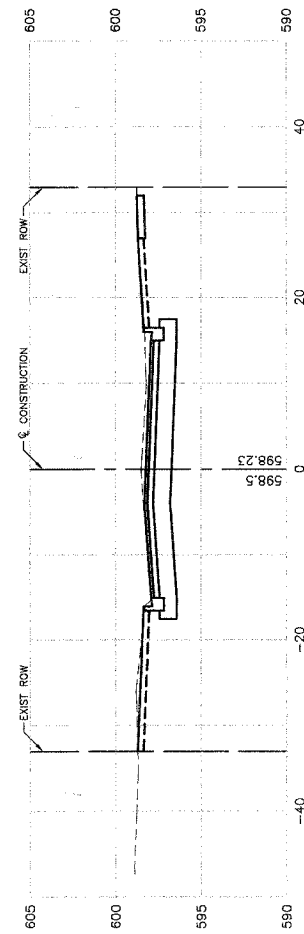
SECTION 4, TOWNSHIP 36, RANGE 14

P. A. U. SHEET	SECTION	COUNTY	TOTAL SHEETS	SHEET NO.
	03-00108-00-PK	COOK	025	023
STA.	TO STA.			
FED. ROAD DIST. NO.	ILLINOIS	FED. AID PROJECT		

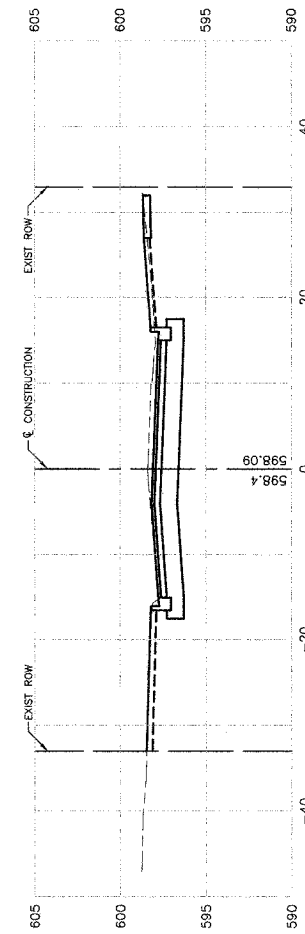
CONTRACT NO. 83912



16+00  
CUT=70  
FILL=2



15+50  
CUT=70  
FILL=1



15+00  
CUT=67  
FILL=1

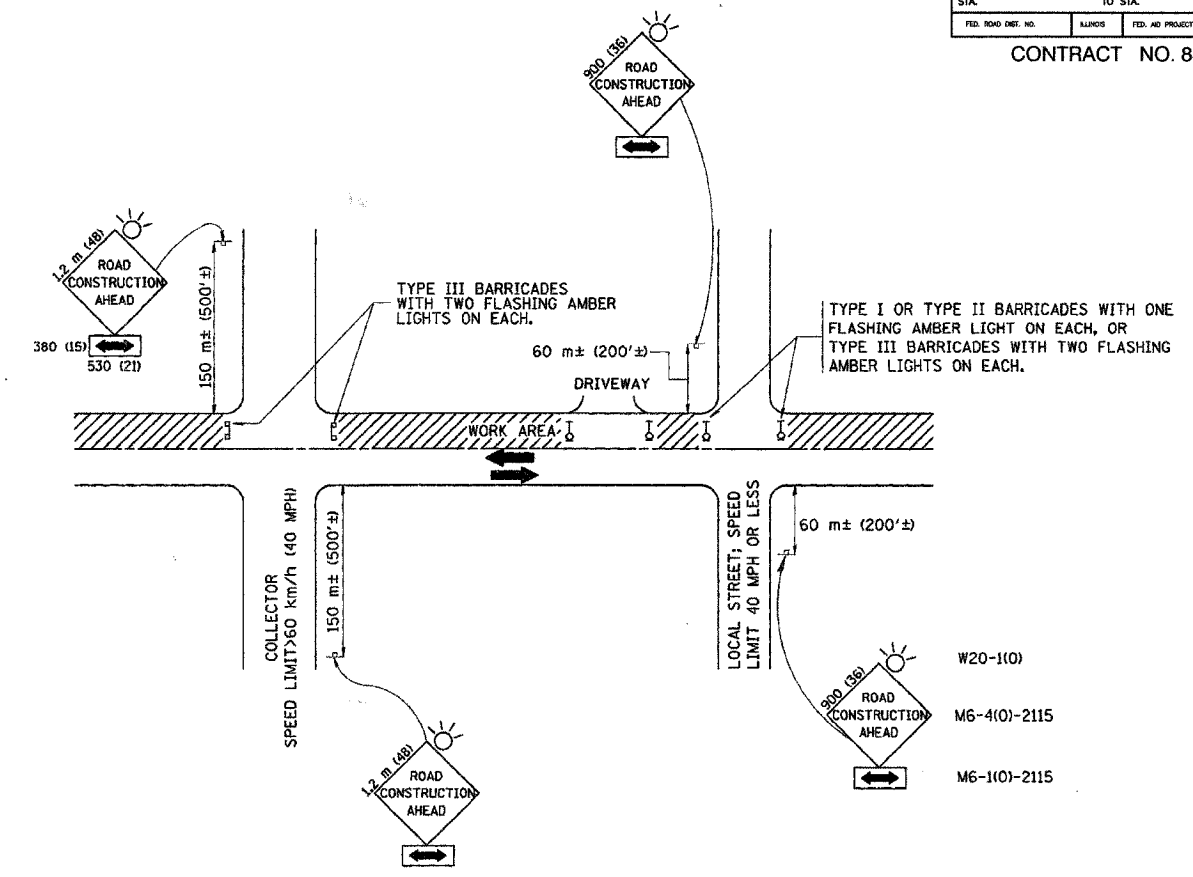
REVISIONS	
NAME	DATE

ILLINOIS DEPARTMENT OF TRANSPORTATION  
**COMMUTER PARKING  
 145TH STREET  
 CROSS SECTIONS  
 STA 15+00 TO STA 16+00**  
 SCALE: VERT. 1"=5'  
 HORIZ. 1"=10'  
 DATE 2/22/07  
 DRAWN BY AG/RG  
 CHECKED BY PKB

ROBINSON ENGINEERING, LTD.  
 17000 SOUTH PARK AVENUE SOUTH HOLLAND, ILLINOIS 60473  
 (708) 321-4700 FAX (708) 321-8288  
 ILLINOIS DESIGN FIRM REGISTRATION NO. 184001128 04185-XSEC-01

F. A. U. SHEET NO.	SECTION	COUNTY	TOTAL SHEETS	SHEET NO.
	03-00108-00-PK	COOK	025	024
STA.	TO STA.			
FED. ROAD DIST. NO.	ILLINOIS	FED. AID PROJECT		

CONTRACT NO. 83912



TRAFFIC CONTROL AND PROTECTION FOR SIDE ROADS, INTERSECTIONS, AND DRIVEWAYS

NOTES:

- A. FOR NO LANE RESTRICTION ON THE SIDE ROAD OR DRIVEWAYS
- SIDE ROAD WITH A SPEED LIMIT OF 60 km/h (40 MPH) OR LESS AS SHOWN ON THE DRAWING AND AS DIRECTED BY THE ENGINEER:
    - ONE ROAD CONSTRUCTION AHEAD SIGN 900x36 (36x36) WITH A FLASHER AND FLAG MOUNTED ON IT APPROXIMATELY 60 m (200') IN ADVANCE OF THE MAIN ROUTE.
    - THE CLOSED PORTION OF THE MAIN ROUTE SHALL BE PROTECTED BY BLOCKING WITH TYPE I, TYPE II OR TYPE III BARRICADES, 1/3 OF THE CROSS SECTION OF THE CLOSED PORTION.
  - SIDE ROAD WITH A SPEED LIMIT GREATER THAN 60 km/h (40 MPH) AS SHOWN ON THE DRAWING AND AS DIRECTED BY THE ENGINEER:
    - ONE ROAD CONSTRUCTION AHEAD SIGN 1.2 m x 1.2 m (48x48) WITH A FLASHER MOUNTED ON IT APPROXIMATELY 150 m (500') IN ADVANCE OF THE MAIN ROUTE.
    - THE CLOSED PORTION OF THE MAIN ROUTE SHALL BE PROTECTED BY BLOCKING WITH TYPE III BARRICADES, 1/2 OF THE CROSS SECTION OF THE CLOSED PORTION.
  - WHEN THE SIDE ROAD LIES BETWEEN THE BEGINNING OF THE MAINLINE SIGNING AND THE WORK ZONE, A SINGLE HEADED ARROW (M6-1) SHALL BE USED IN LIEU OF THE DOUBLE HEADED ARROW (M6-4).
- B. FOR A LANE CLOSURE ON A SIDE ROAD OR DRIVEWAY:
- USE APPLICABLE PORTIONS OF THE TYPICAL APPLICATION OF TRAFFIC CONTROL DEVICES (STD. 701501, STD. 701606 OR THE APPROPRIATE STANDARD). THE SPACING OF SIGNS AND BARRICADES SHALL BE ADJUSTED FOR FIELD CONDITIONS AS DIRECTED BY THE ENGINEER. THE DIRECTIONAL ARROW SHALL BE COVERED OR REMOVED WHEN NO LONGER CONSISTENT WITH THE SIDE ROAD LANE CLOSURE.
- C. ADVANCE WARNING SIGNS ARE TO BE OMITTED ON DRIVEWAY UNLESS OTHERWISE NOTED.
- D. THE TRAFFIC CONTROL AND PROTECTION FOR SIDE ROADS, INTERSECTIONS, AND DRIVEWAYS SHALL BE INCIDENTAL TO THE COST OF SPECIFIED TRAFFIC CONTROL STANDARDS OR ITEMS.

REVISIONS	
NAME	DATE
LHA	6/89
T. RAMMACHER	09/08/94
J. OBERLE	10/18/95
A. HOUSEH	03/06/96
A. HOUSEH	10/15/96
T. RAMMACHER	01/06/00

ILLINOIS DEPARTMENT OF TRANSPORTATION  
 TRAFFIC CONTROL AND PROTECTION  
 FOR  
 SIDE ROADS, INTERSECTIONS, AND  
 DRIVEWAYS

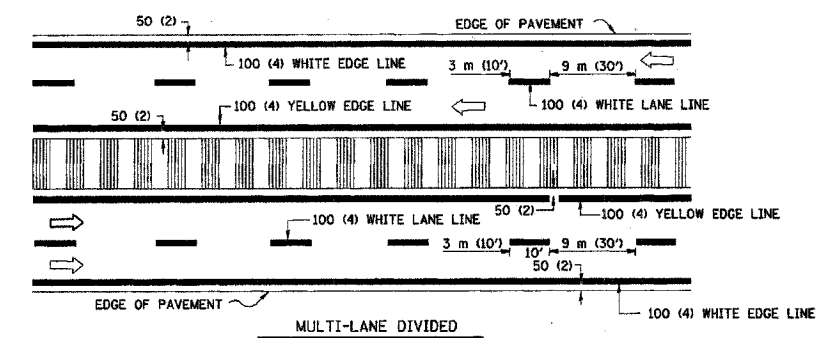
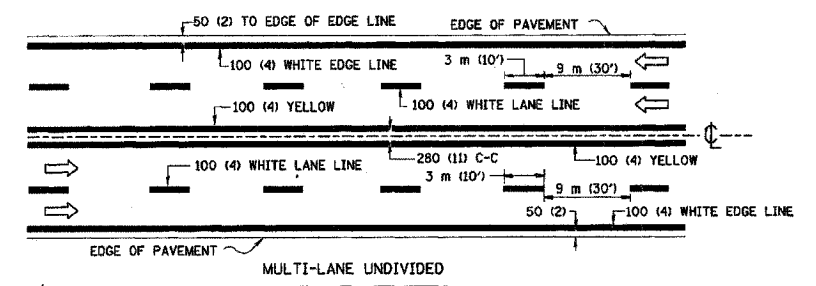
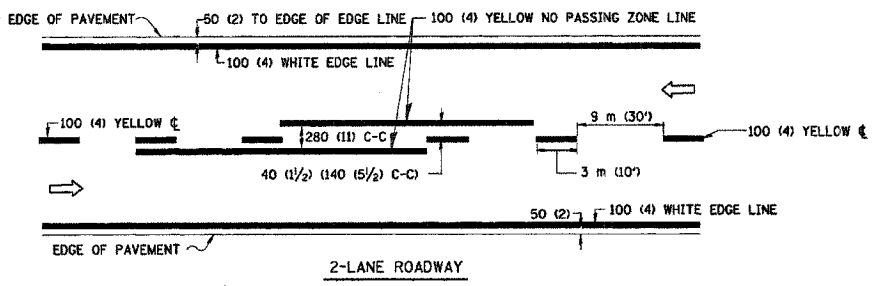
SCALE: VERT. \_\_\_\_\_  
 HORIZ. \_\_\_\_\_  
 DATE 03/26/2003

DRAWN BY \_\_\_\_\_  
 CHECKED BY \_\_\_\_\_



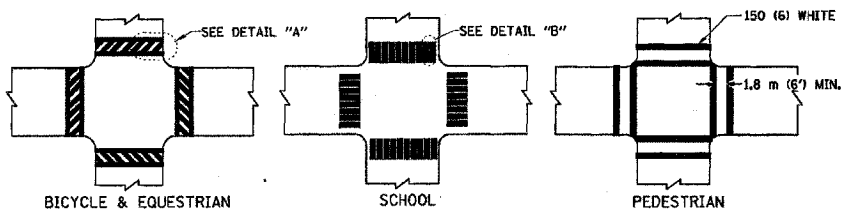
F.A. #	SECTION	COUNTY	TOTAL SHEETS	SHEET NO.
03-00108-00-PK	COOK	025	025	
STA.	TO STA.			
FED. ROAD DIST. NO.	ILLINOIS	FED. AID PROJECT		

CONTRACT NO. 83912

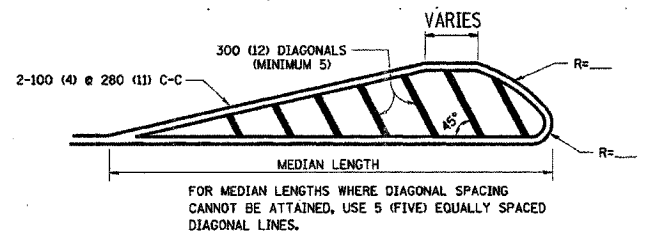
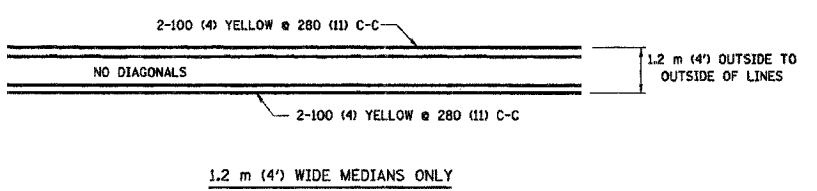


NOTE: MEDIANS WITH BARRIER CURB DO NOT REQUIRE AN EDGE LINE

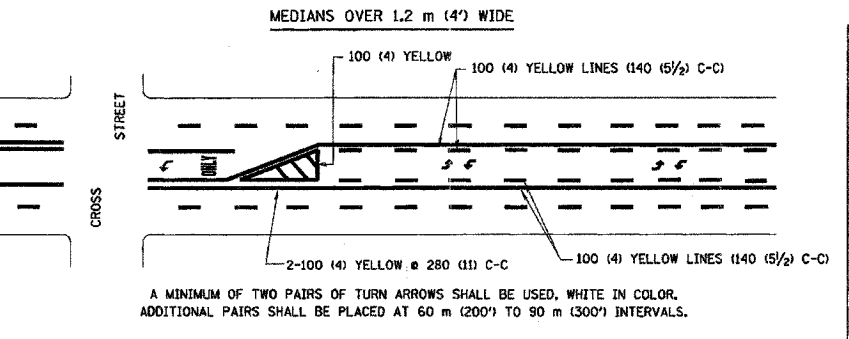
TYPICAL LANE AND EDGE LINE MARKING



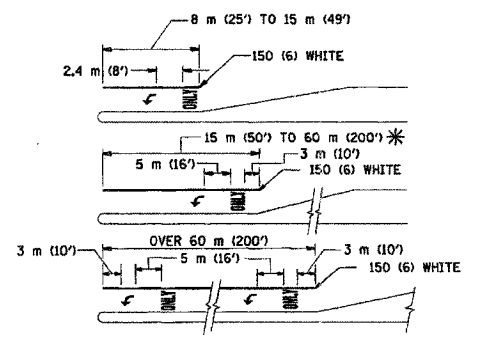
TYPICAL CROSSWALK MARKING



DIAGONAL LINE SPACING: 15 m (50') C-C (LESS THAN 50 km/h (30 MPH))  
25 m (75') C-C (50 km/h (30 MPH) TO 70 km/h (45 MPH))  
45 m (150') C-C (MORE THAN 70 km/h (45 MPH))

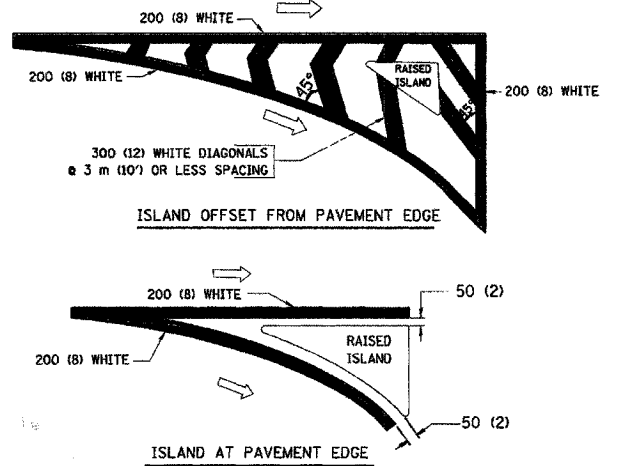


TYPICAL PAINTED MEDIAN MARKING



FULL SIZE LETTERS 2.4 m (8') AND ARROWS SHALL BE USED.  
AREA = 1.5 m<sup>2</sup> (15.6 SQ. FT.) ONLY AREA = 1.9 m<sup>2</sup> (20.8 SQ. FT.)  
\* TURN LANES IN EXCESS OF 120 m (400') IN LENGTH MAY HAVE AN ADDITIONAL SET OF ARROW - "ONLY" INSTALLED MIDWAY BETWEEN THE OTHER TWO SETS OF ARROW - "ONLY".

TYPICAL TURN LANE MARKING



TYPICAL ISLAND MARKING

TYPE OF MARKING	WIDTH OF LINE	PATTERN	COLOR	SPACING / REMARKS
CENTERLINE ON 2 LANE PAVEMENT	100 (4)	SKIP-DASH	YELLOW	3 m (10') LINE WITH 9 m (30') SPACE
CENTERLINE ON MULTI-LANE UNDIVIDED PAVEMENT	2 @ 100 (4)	SOLID	YELLOW	280 (11) C-C
NO PASSING ZONE LINES: FOR ONE DIRECTION FOR BOTH DIRECTIONS	100 (4) 2 @ 100 (4)	SOLID SOLID	YELLOW YELLOW	140 (5 1/2) C-C FROM SKIP-DASH CENTERLINE 280 (11) C-C OMIT SKIP-DASH CENTERLINE BETWEEN
LANE LINES	100 (4) 125 (5) ON FREEWAYS	SKIP-DASH SKIP-DASH	WHITE WHITE	3 m (10') LINE WITH 9 m (30') SPACE
DOTTED LINES (EXTENSIONS OF CENTER, LANE OR TURN LANE MARKINGS)	SAME AS LINE BEING EXTENDED	SKIP-DASH	SAME AS LINE BEING EXTENDED	600 (2') LINE WITH 1.8 m (6') SPACE
EDGE LINES	100 (4)	SOLID	YELLOW-LEFT WHITE-RIGHT	OUTLINE MOUNTABLE MEDIANS IN YELLOW; EDGE LINES ARE NOT USED NEXT TO BARRIER CURB
TURN LANE MARKINGS	150 (6) LINE; FULL SIZE LETTERS & SYMBOLS (2.4 m (8'))	SOLID	WHITE	SEE TYPICAL TURN LANE MARKING DETAIL.
TWO WAY LEFT TURN MARKING	2 @ 100 (4) EACH DIRECTION 2.4 m (8') LEFT ARROW	SKIP-DASH AND SOLID IN PAIRS	YELLOW WHITE	3 m (10') LINE WITH 9 m (30') SPACE FOR SKIP-DASH; 140 (5 1/2) C-C BETWEEN SOLID LINE AND SKIP-DASH LINE SEE TYPICAL TWO-WAY LEFT TURN MARKING DETAIL.
CROSSWALK LINES (PEDESTRIAN) A. DIAGONALS (BIKE & EQUESTRIAN) B. LONGITUDINAL BARS (SCHOOL)	2 @ 150 (6) 300 (12) @ 45° 300 (12) @ 90°	SOLID SOLID SOLID	WHITE WHITE WHITE	NOT LESS THAN 1.8 m (6') APART 600 (2') APART 600 (2') APART SEE TYPICAL CROSSWALK MARKING DETAILS.
STOP LINES	600 (24)	SOLID	WHITE	PLACE 1.2 m (4') IN ADVANCE OF AND PARALLEL TO CROSSWALK, IF PRESENT. OTHERWISE, PLACE AT DESIRED STOPPING POINT. PARALLEL TO CROSSROAD CENTERLINE, WHERE POSSIBLE.
PAINTED MEDIANS	2 @ 100 (4) WITH 300 (12) DIAGONALS @ 45° NO DIAGONALS USED FOR 1.2 m (4') WIDE MEDIANS	SOLID	YELLOW; TWO WAY TRAFFIC WHITE; ONE WAY TRAFFIC	280 (11) C-C FOR THE DOUBLE LINE SEE TYPICAL PAINTED MEDIAN MARKING.
GORE MARKING AND CHANNELIZING LINES	200 (8) WITH 300 (12) DIAGONALS @ 45°	SOLID	WHITE	DIAGONALS: 4.5 m (15') C-C (LESS THAN 50 km/h (30 MPH)) 6 m (20') C-C (50 km/h (30 MPH) TO 70 km/h (45 MPH)) 9 m (30') C-C (OVER 70 km/h (45 MPH))
RAILROAD CROSSING	600 (24) TRANSVERSE LINES; "RR" IS 1.8 m (6') LETTERS; 400 (16) LINE FOR "X"	SOLID	WHITE	SEE STATE STANDARD T80001 AREA OF: "R"=0.33m <sup>2</sup> (3.6 SQ. FT.) EACH "X"=5.0 m <sup>2</sup> (54.0 SQ. FT.)
SHOULDER DIAGONALS	300 (12) @ 45°	SOLID	WHITE - RIGHT YELLOW - LEFT	15 m (50') C-C (LESS THAN 50 km/h (30 MPH)) 25 m (75') C-C (50 km/h (30 MPH) TO 70 km/h (45 MPH)) 45 m (150') C-C (OVER 70 km/h (45 MPH))

FOR FURTHER DETAILS ON PAVEMENT MARKING REFER TO STANDARD SPECIFICATIONS FOR ROAD AND BRIDGE CONSTRUCTION AND STATE STANDARD T80001.

All dimensions are in millimeters (inches) unless otherwise shown.

ILLINOIS DEPARTMENT OF TRANSPORTATION

DISTRICT ONE  
TYPICAL PAVEMENT  
MARKINGS

REVISIONS	
NAME	DATE
EVERS	03-19-90
T. RAMMACHER	10-27-94
ALEX HOUSEH	10-09-96
ALEX HOUSEH	10-17-96
T. RAMMACHER	01-06-00

SCALE: NONE  
DATE 03/26/2003  
DRAWN BY CADD  
CHECKED BY  
TC-13