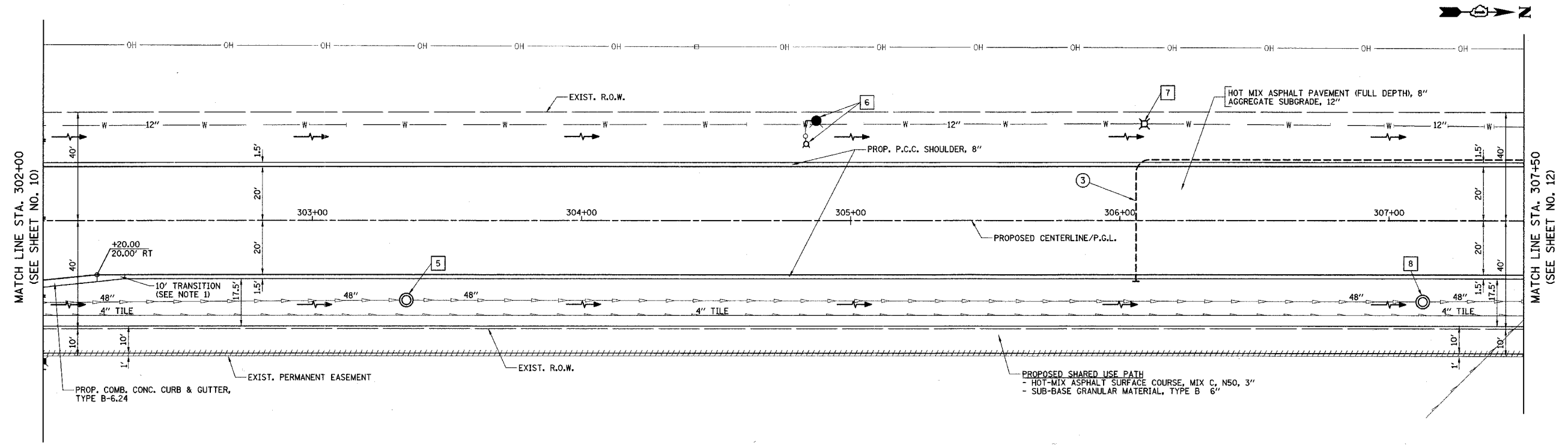


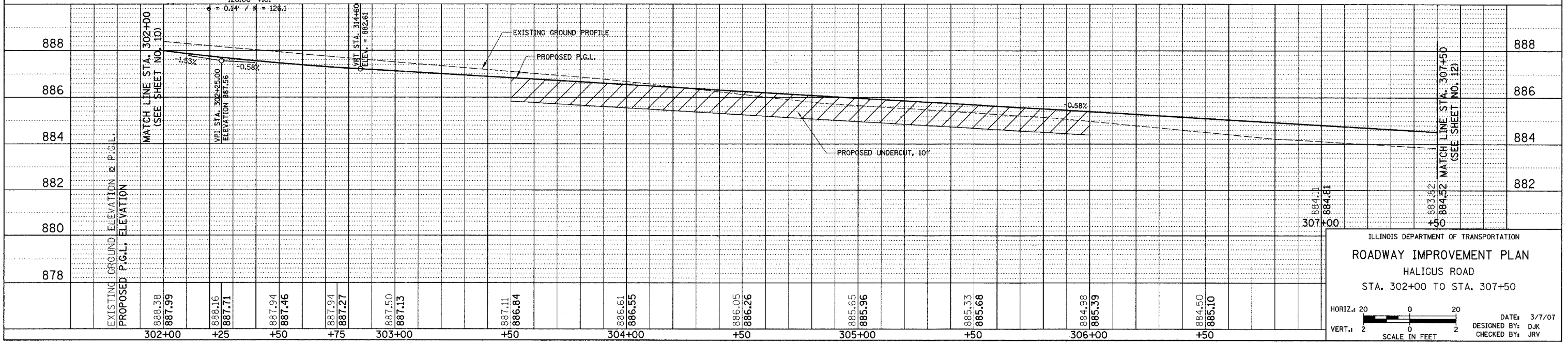
F.A.U. RTE.	SECTION	COUNTY	TOTAL SHEETS	SHEET NO.
3869	06-00030-00-FP	MCHENRY	56	11
STA. 302+00		TO STA. 307+50		
FED. ROAD DIST. NO. 7		ILLINOIS	FED. AID PROJECT M-8003(641)	

- 5 STA. 303+34.90, 29.40' RT. MH TO BE RECONSTRUCTED PROP. RIM = 884.83
- 6 STA. 304+83.44, 28.35 LT. FH TO BE MOVED TO STA. 304+87.17, 36.88' LT.
- 7 STA. 306+09, 36.00 LT. V.V. TO BE RECONSTRUCTED EXIST. RIM = 885.40 PROP. RIM = 884.73
- 8 STA. 307+12.50, 29.97' RT. MH TO BE RECONSTRUCTED PROP. RIM = 882.10
- 3 24" - 4" PIPE UNDERDRAIN, FABRIC LINED TRENCH



- NOTES:
- TRANSITION CURB HEIGHT FROM 6" TO 0" AND TRANSITION CURB AND GUTTER WIDTH FROM 2.5' TO 1.5' OVER 10'. PAID FOR AS "COMBINATION CONCRETE CURB AND GUTTER, TYPE B-6.24".
  - LOCATIONS OF FIELD TILES HAVE BEEN SHOWN BASED ON PLANS TITLED "REGIONAL STORMWATER DRAINAGE SYSTEM" DATED 03/01/99.
  - THE EXISTING MANHOLES ON THE 48" SEWER WERE INSTALLED AS PART OF THE "REGIONAL STORMWATER DRAINAGE SYSTEM". ACCORDING TO THE PLANS FOR THE STORM SEWER INSTALLATION, THE MANHOLE LIDS WERE INSTALLED APPROXIMATELY 2' BELOW EXISTING GRADE. ALL WORK REQUIRED TO LOCATE AND EXPOSE THE EXISTING STRUCTURES SHALL BE INCLUDED IN THE COST OF "MANHOLES TO BE RECONSTRUCTED."

HALIGUS ROAD



ILLINOIS DEPARTMENT OF TRANSPORTATION  
**ROADWAY IMPROVEMENT PLAN**  
 HALIGUS ROAD  
 STA. 302+00 TO STA. 307+50

HORIZ. 20 0 20  
 VERT. 2 0 2  
 SCALE IN FEET

DATE: 3/7/07  
 DESIGNED BY: DJK  
 CHECKED BY: JRV