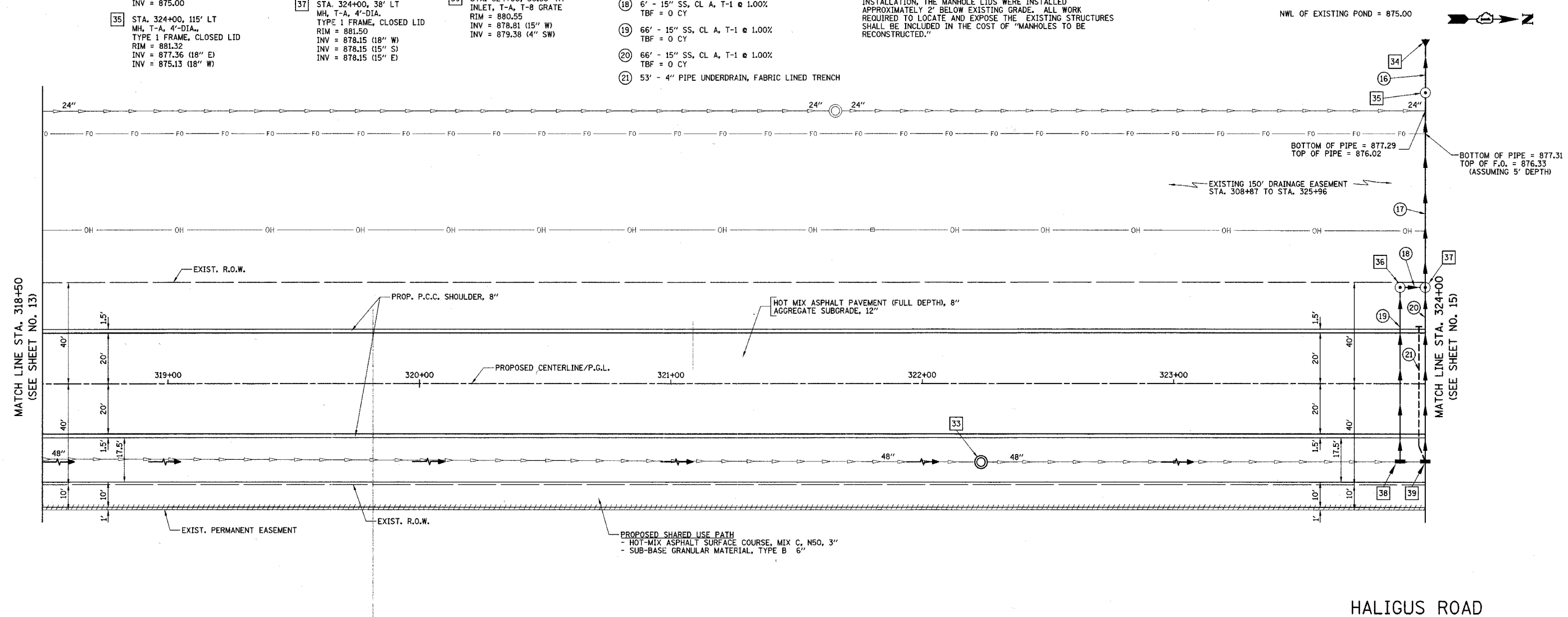


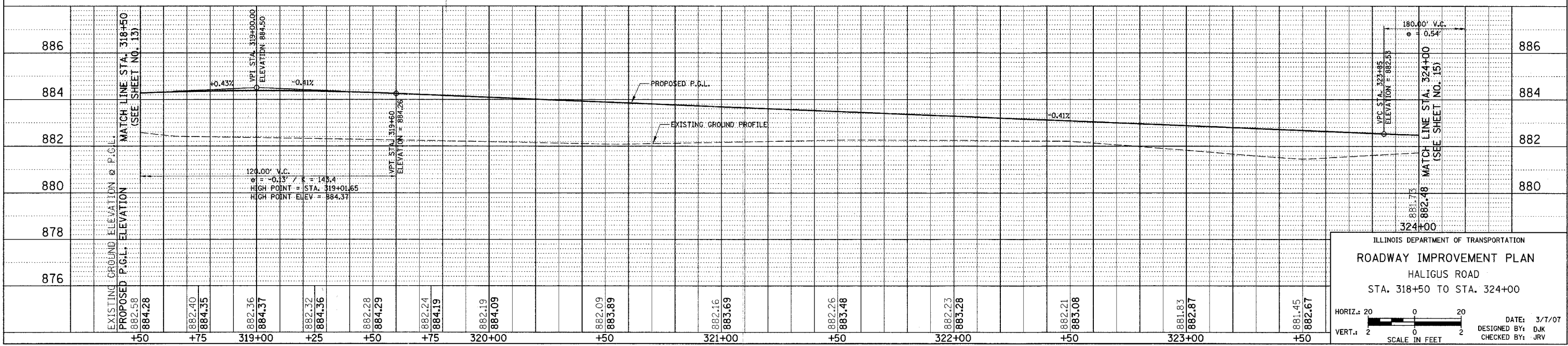
F.A.U. R.T.E.	SECTION	COUNTY	TOTAL SHEETS	SHEET NO.
3869	06-00030-00-FP	MCHENRY	56	14
STA. 318+50		TO STA. 324+00		
FED. ROAD DIST. NO. 7		ILLINOIS FED. AID PROJECT M-8003(640)		

- 33 STA. 322+23.41, 31.11' RT MH TO BE RECONSTRUCTED PROP. RIM = 880.40
- 34 STA. 324+00, 134.33' LT PRC FLARED END SECTION, 18" INV = 875.00
- 35 STA. 324+00, 115' LT MH, T-A, 4'-DIA., TYPE 1 FRAME, CLOSED LID RIM = 881.32 INV = 877.36 (18" E) INV = 875.13 (18" W)
- 36 STA. 323+90, 38' LT MH, T-A, 4'-DIA., TYPE 1 FRAME, CLOSED LID RIM = 881.50 INV = 878.21 (15" E) INV = 878.21 (15" N)
- 37 STA. 324+00, 38' LT MH, T-A, 4'-DIA., TYPE 1 FRAME, CLOSED LID RIM = 881.50 INV = 878.15 (18" W) INV = 878.15 (15" S) INV = 878.15 (15" E)
- 38 STA. 33+90, 30.80' RT INLET, T-A, T-8 GRATE RIM = 880.60 INV = 878.87 (15" W)
- 39 STA. 324+00, 30.80' RT INLET, T-A, T-8 GRATE RIM = 880.55 INV = 878.81 (15" W) INV = 879.38 (4" SW)
- 16 13' - 18" SS, CL A, T-2 @ 1.10% TBF = 0 CY
- 17 72' - 18" SS, CL A, T-1 @ 1.10% TBF = 5.7 CY
- 18 6' - 15" SS, CL A, T-1 @ 1.00% TBF = 0 CY
- 19 66' - 15" SS, CL A, T-1 @ 1.00% TBF = 0 CY
- 20 66' - 15" SS, CL A, T-1 @ 1.00% TBF = 0 CY
- 21 53' - 4" PIPE UNDERDRAIN, FABRIC LINED TRENCH

**NOTES:**  
 1. THE EXISTING MANHOLES ON THE 48" SEWER WERE INSTALLED AS PART OF THE "REGIONAL STORMWATER DRAINAGE SYSTEM". ACCORDING TO THE PLANS FOR THE STORM SEWER INSTALLATION, THE MANHOLE LIDS WERE INSTALLED APPROXIMATELY 2" BELOW EXISTING GRADE. ALL WORK REQUIRED TO LOCATE AND EXPOSE THE EXISTING STRUCTURES SHALL BE INCLUDED IN THE COST OF "MANHOLES TO BE RECONSTRUCTED."



**HALIGUS ROAD**



ILLINOIS DEPARTMENT OF TRANSPORTATION  
**ROADWAY IMPROVEMENT PLAN**  
 HALIGUS ROAD  
 STA. 318+50 TO STA. 324+00

HORIZ.: 20  
 VERT.: 2

DATE: 3/7/07  
 DESIGNED BY: DJK  
 CHECKED BY: JRV