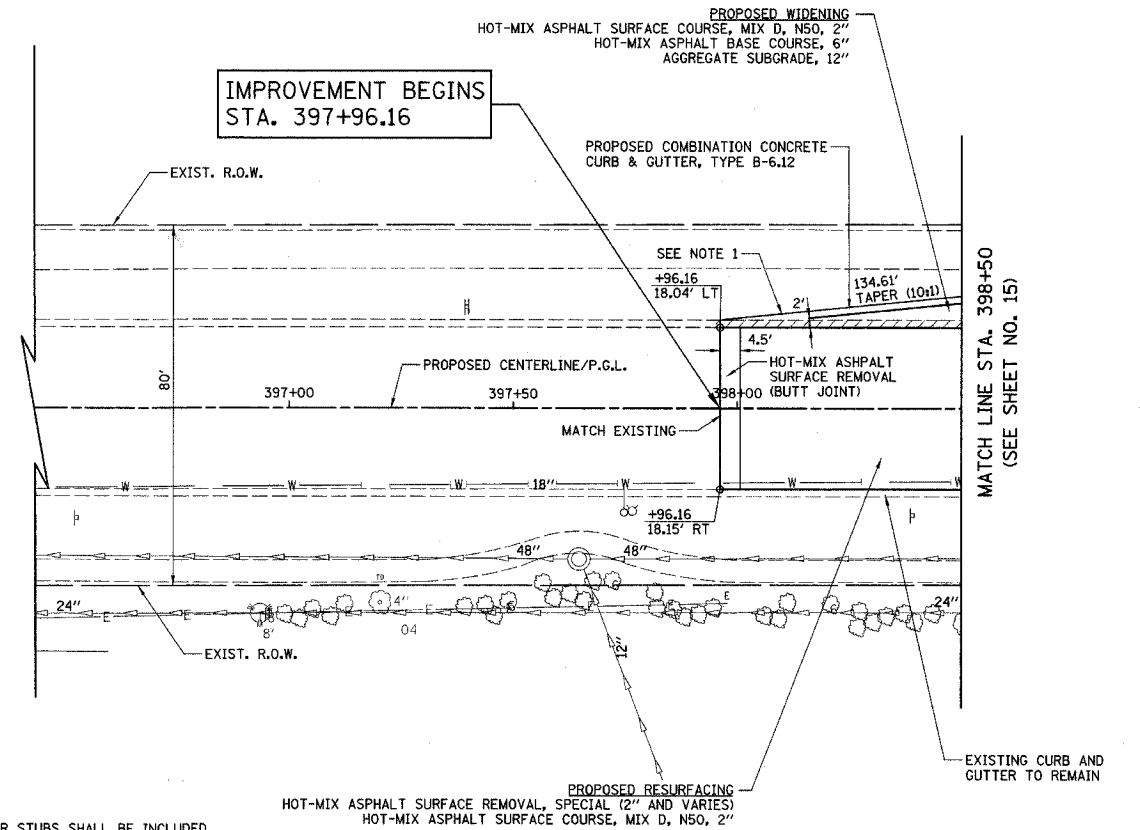
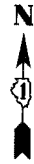


F.A.U. RTE.	SECTION	COUNTY	TOTAL SHEETS	SHEET NO.
3869	06-00030-00-FP	MCHENRY	56	16
STA. 397+96.16		TO STA. 398+50		
FED. ROAD DIST. NO. 7		ILLINOIS	FED. AID PROJECT W-8003641	



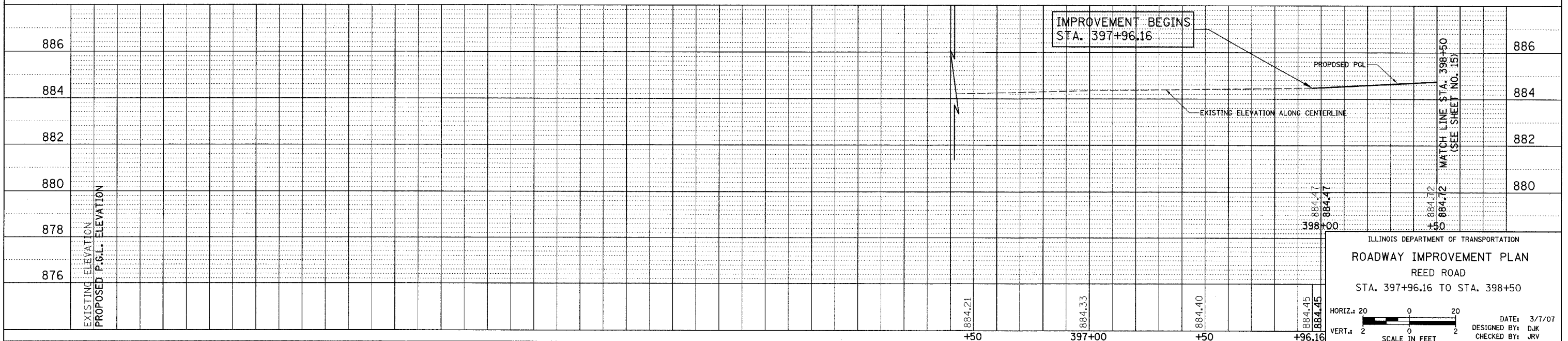
NOTE:

- 1) ADDITIONAL GUTTER WIDTH FOR STUBS SHALL BE INCLUDED IN THE COST OF "COMB. CONC. CURB AND GUTTER, TYPE B-6.12". SEE DETAIL SHEET NO. 32.
- 2) PRIOR TO PLACING HOT-MIX ASPHALT ADJACENT TO EXISTING PAVEMENT TO REMAIN, THE EXPOSED EDGE SHALL BE CLEANED OF LOOSE MATERIAL TO THE SATISFACTION OF THE ENGINEER. THIS WORK SHALL BE CONSIDERED INCLUDED IN THE COST OF THE HOT-MIX ASPHALT BEING PLACED.

LEGEND

REMOVAL

REED ROAD



ILLINOIS DEPARTMENT OF TRANSPORTATION

ROADWAY IMPROVEMENT PLAN

REED ROAD

STA. 397+96.16 TO STA. 398+50

HORIZ.: 20 0 20

VERT.: 2 0 2

SCALE IN FEET

DATE: 3/7/07

DESIGNED BY: DJK

CHECKED BY: JRV