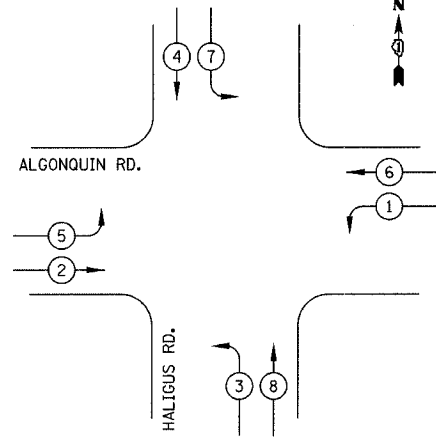
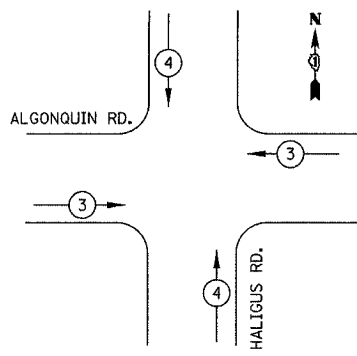


F.A.U. RTE.	SECTION	COUNTY	TOTAL SHEETS	SHEET NO.
3869	06-00030-00-FP	MCHENRY	56	26
TEMPORARY CABLE PLAN, SEQUENCES, & QUANTITIES				
FED. ROAD DIST. NO. 7   ILLINOIS   FED. AID PROJECT M-8003(64D)				

TEMPORARY CONTROLLER SEQUENCE



TEMPORARY EMERGENCY VEHICLE PREEMPTION SEQUENCE



PROPOSED EMERGENCY VEHICLE PREEMPTORS		
EMERGENCY VEHICLE PREEMPTOR	3	4
MOVEMENT	← →	↑ ↓

TEMPORARY CABLE DIAGRAM LEGEND

- R TEMPORARY TRAFFIC SIGNAL SECTION OR PEDESTRIAN SIGNAL SECTION 12" (300 mm)
- X CONTROLLER CABINET
- SERVICE INSTALLATION
- ⑤ INDICATES NUMBER OF CONDUCTORS IN CABLE. ALL CONDUCTORS TO BE NUMBER 14 AWG WIRE UNLESS OTHERWISE NOTED.
- EMERGENCY VEHICLE LIGHT DETECTOR
- CONFIRMATION BEACON
- PEDESTRIAN PUSHBUTTON DETECTOR
- VEHICLE DETECTOR, INDUCTION LOOP
- R 12" (300mm) PEDESTRIAN SIGNAL SECTION
- VIDEO VEHICLE DETECTOR

LEGEND

- DUAL ENTRY PHASE
- SINGLE ENTRY PHASE
- OVERLAP
- PEDESTRIAN PHASE
- NUMBER REFERS TO ASSOCIATED PHASE

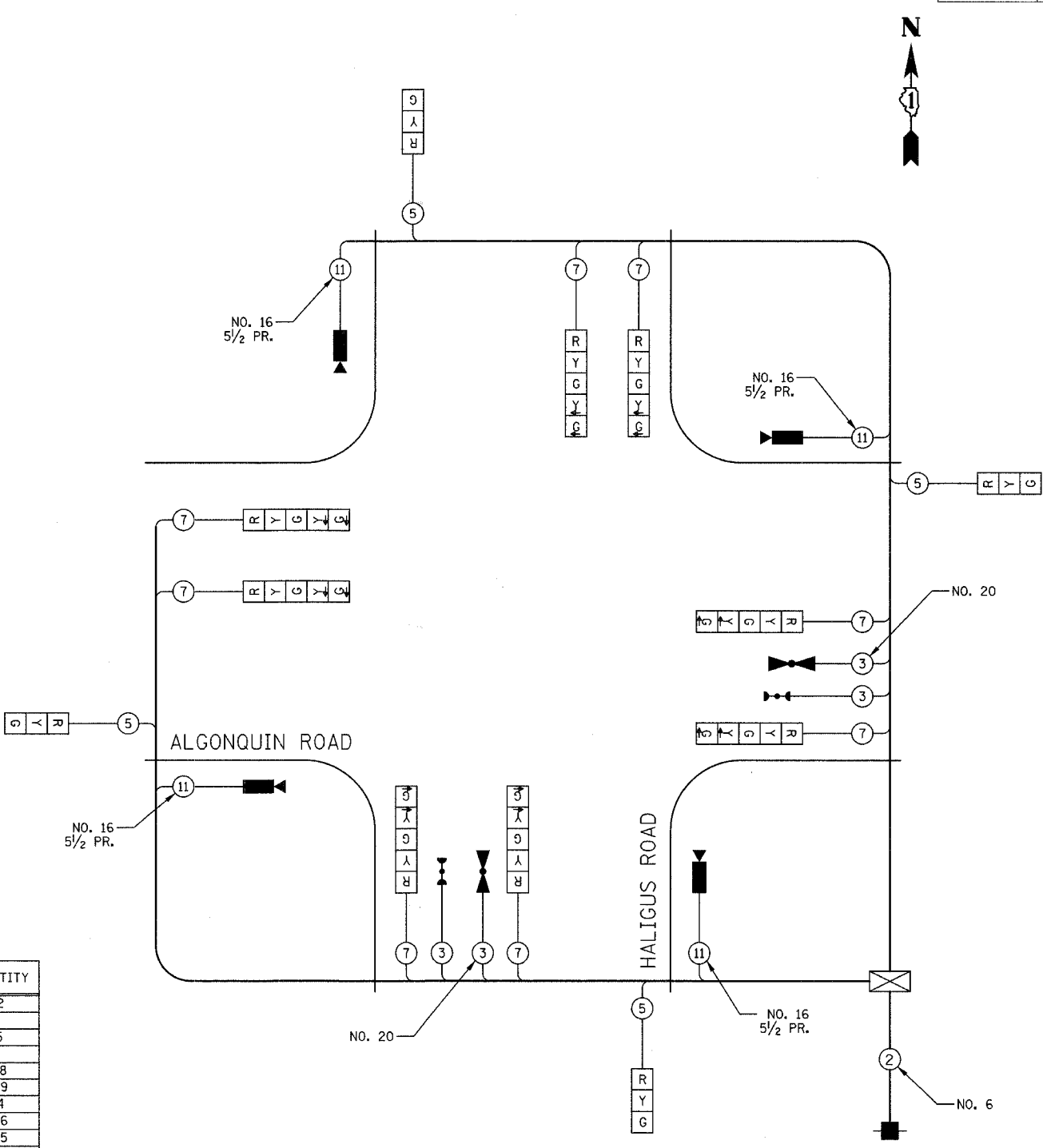
PHASE DESIGNATION DIAGRAM

I.D.O.T. TRAFFIC SIGNAL INSTALLATION ELECTRICAL SERVICE REQUIREMENTS					TOTAL WATTAGE
TYPE	NO. LAMPS	WATTAGE		% OPERATION	
		INCAND.	LED		
SIGNAL (RED)	12		17	0.50	102
(YELLOW)	12		25	0.25	75
(GREEN)	12		15	0.25	45
ARROW	16		12	0.10	19
CONTROLLER	1		100	1.00	100
VIDEO SYSTEMS	1		150	1.00	150
FLASHER				0.50	
TOTAL =					491

ENERGY COSTS TO: VILLAGE OF HUNTLEY  
10987 MAIN STREET  
HUNTLEY, IL 60142  
ENERGY SUPPLY: CONTACT: DAVE HUBERTY  
PHONE: (847) 608-2342  
COMPANY: COM ED

SCHEDULE OF QUANTITIES

PAY ITEM	UNIT	QUANTITY
SIGN PANEL - TYPE 1 (SPECIAL)	50 FT	32
* TRAFFIC SIGNAL WOOD POLE, 45 FT, CLASS 5	EACH	4
CONDUIT PUSHED, 2" DIA., GALVANIZED STEEL	FOOT	15
* FULL-ACTUATED CONTROLLER AND TYPE IV CABINET, SPECIAL	EACH	1
SPAN WIRE	FOOT	618
TETHER WIRE	FOOT	589
ELECTRIC CABLE IN CONDUIT, SERVICE NO. 6 2C	FOOT	34
ELECTRIC CABLE AERIAL SUSPENDED, SIGNAL, NO. 14 3C	FOOT	346
ELECTRIC CABLE AERIAL SUSPENDED, SIGNAL, NO. 14 5C	FOOT	985
ELECTRIC CABLE AERIAL SUSPENDED, SIGNAL, NO. 14 7C	FOOT	1970
SIGNAL HEAD, L.E.D., 1-FACE, 3-SECTION, SPAN WIRE MOUNTED	EACH	4
SIGNAL HEAD, L.E.D., 1-FACE, 5-SECTION, SPAN WIRE MOUNTED	EACH	8
* LIGHT DETECTOR	EACH	2
* LIGHT DETECTOR AMPLIFIER	EACH	1
SERVICE INSTALLATION, GROUND MOUNTED	EACH	1
* ELECTRIC CABLE AERIAL SUSPENDED NO. 20 3/C, TWISTED, SHIELDED	FOOT	346
* VIDEO DETECTION SYSTEM (COMPLETE INTERSECTION)	EACH	1
ELECTRIC CABLE AERIAL SUSPENDED, COMMUNICATION, NO. 16 5/2 PAIR	FOOT	763
* 100% COST TO VILLAGE OF HUNTLEY		



TEMPORARY CABLE PLAN  
NOT TO SCALE

NOTE:  
THE TRAFFIC SIGNAL CONTROL EQUIPMENT FOR THIS PROJECT SHALL BE "ECONOLITE" BRAND.

ILLINOIS DEPARTMENT OF TRANSPORTATION  
TEMPORARY CABLE PLAN, SEQUENCES, AND SCHEDULE OF QUANTITIES  
ALGONQUIN ROAD & HALIGUS ROAD  
DATE: 3/7/07  
DESIGNED BY: BRD  
CHECKED BY: JJE  
NOT TO SCALE