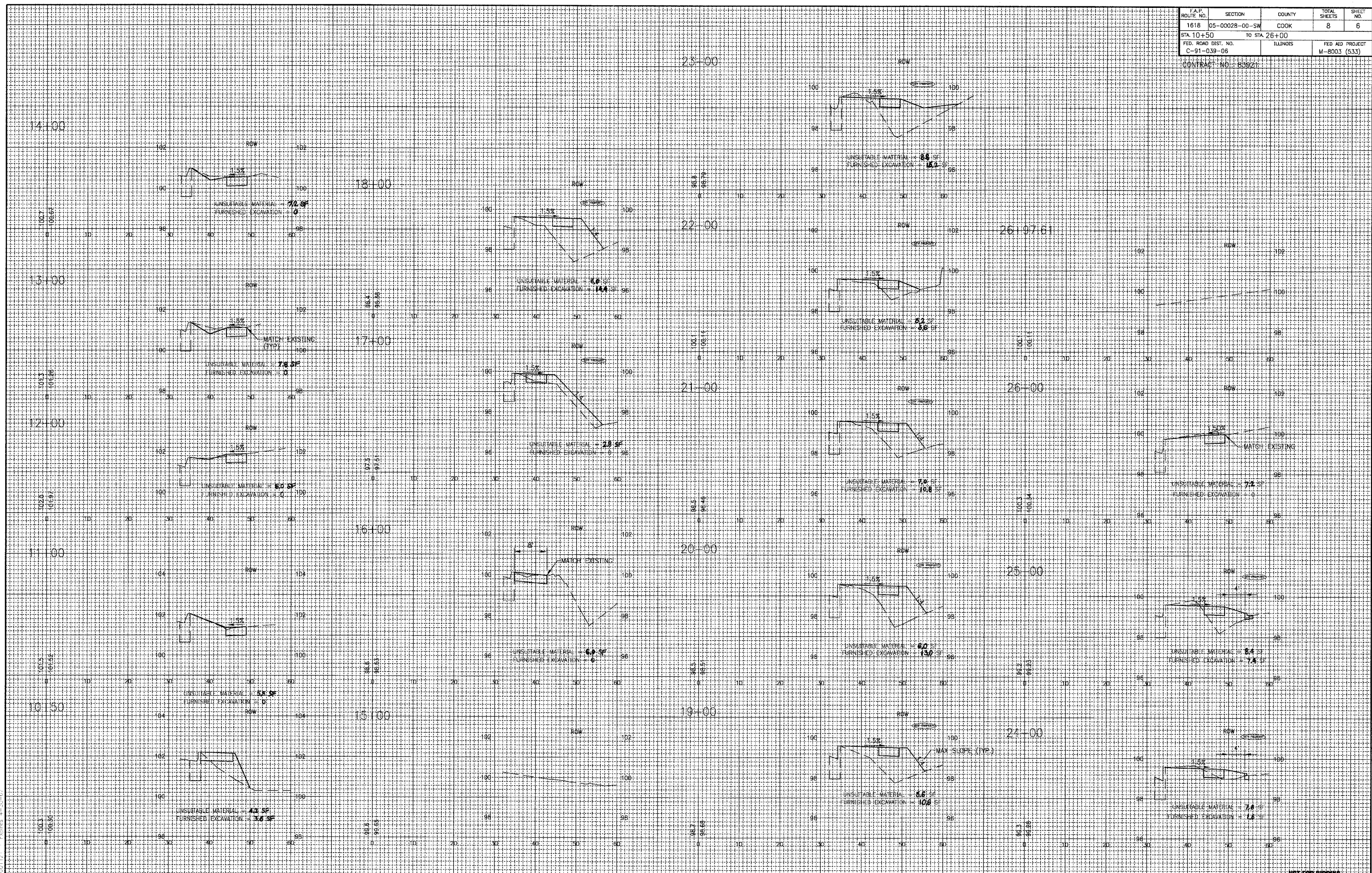


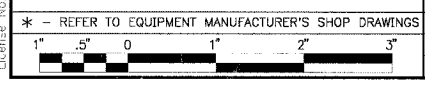
F.A.P. ROUTE NO.	SECTION	COUNTY	TOTAL SHEETS	SHEET NO.
1616	05-00028-00-SW	COOK	8	6
STA. 10+50	TO STA 26+00			
FED. ROAD DIST. NO.	ILLINOIS		FED AID PROJECT	
C-91-039-06			M-8003 (533)	

CONTRACT NO. 83921



NOT FOR BIDDING

CONSULTANTS	REV. NO.	DATE	DESCRIPTION
	1	2-20-07	PER IDOT COMMENTS



BAXTER & WOODMAN
 Consulting Engineers
 Crystal Lake, Illinois 815.458.1200
 Burlington, Wisconsin 262.765.2644
 Mokena, Illinois 708.478.2000
 DeKalb, Illinois 815.787.3111
 Graystone, Illinois 647.223.5608
 Rockford, Illinois 815.458.1554
 Plainfield, Illinois 815.609.7426

CITY OF COUNTRY CLUB HILLS, ILLINOIS
175th STREET SIDEWALK

175TH STREET
STA. 10+50 TO STA. 26+00
CROSS SECTIONS

DESIGNED BY	TMS	SCALE VERT: 1"=2'
DRAWN BY	UKB	HORIZ: 1"=10'
CHECKED BY	NJP	PROJECT NO.
DATE	12-20-06	050073.40
		SHEET NO.
		6 OF 8

U:\CCH\105073\10-175th\105073.dwg
 Date: 2-20-07 8:53am By: njs
 Copyright © 2005, Baxter & Woodman, Inc.
 State of Illinois - Professional Design Firm
 License No. - 184-201121 Expires 4-30-07