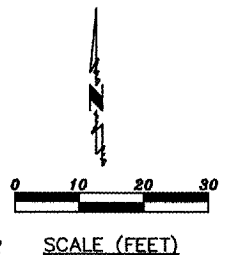
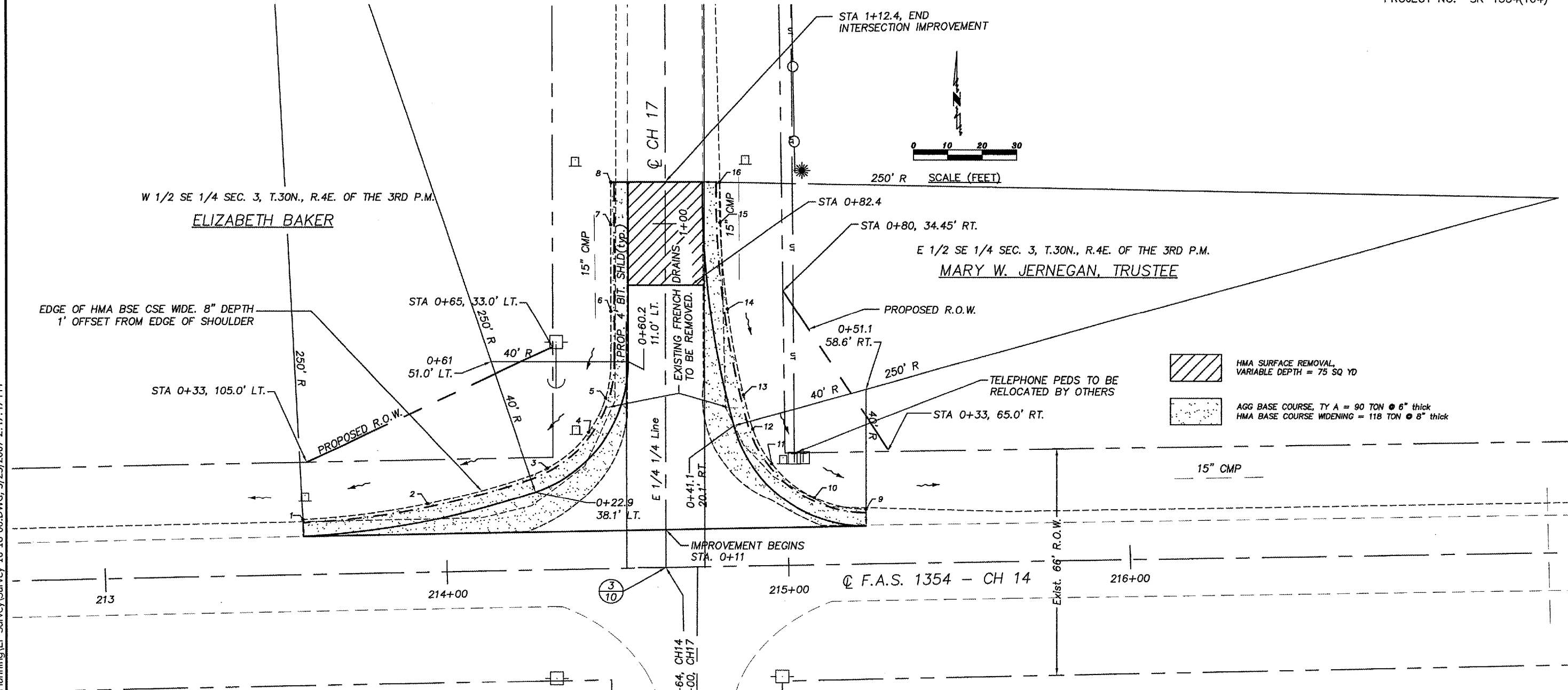


ROUTE NO.	SECTION	COUNTY	TOTAL SHEETS	SHEET NO.
1354	02-00122-00-RS	LIVINGSTON	6	5

PROJECT NO. SR-1354(104)



- HMA SURFACE REMOVAL, VARIABLE DEPTH = 75 SQ YD
- AGG BASE COURSE, TY A = 90 TON @ 6" thick
HMA BASE COURSE WIDENING = 118 TON @ 8" thick

CONTROL INFORMATION

BM = RR SPIKE IN PP, 25.4' RT. STA. -1+11.2 EL. 95.91

CP #1 = IRON ROD 28.9' LT. STA. -0+30.9

CP #2 = PK NAIL 0.0' RT. STA. -3+20.2

CP #3 = IRON ROD 14.4' RT. STA. 2+36.1

EDGE OF PAVED SHOULDER POINTS

POINT NUMBER	C.H. 17 CENTERLINE			
	STATION	OFFSET	ELEVATION	CL ELEV.
1	0+15	106.1 LT	96.47	97.92
2	0+20	69.8 LT.	96.91	97.90
3	0+30	34.6 LT	97.36	98.00
4	0+40	22.6 LT	97.71	98.14
5	0+50	17.6 LT	98.00	98.34
6	0+75	16.0 LT	98.35	98.65
7	1+00	16.0 LT	98.65	98.95
8	1+11	16.0 LT	98.67	98.97
9	0+15	68.6 RT	97.80	97.92
10	0+20	43.5 RT	97.70	97.90
11	0+30	31.1 RT	97.50	98.00
12	0+40	25.6 RT	97.64	98.14
13	0+50	22.9 RT	97.90	98.34
14	0+75	18.2 RT	98.31	98.65
15	1+00	16.1 RT	98.65	98.95
16	1+11	16.0 RT	98.67	98.97

QUANTITIES(AVERAGE)

EARTH EXCAVATION = 250 CU YD (includes proposed ditch & widening)
 AGG BASE COURSE, TY A = 90 TON
 HMA BSE CSE WIDE = 118 TON
 INCIDENTAL HMA SURFACING = 60 TON
 BITUMINOUS MATERIALS (MC-30) = 90 GALLON
 HMA SURF REM VAR DEPTH = 75 SQ YD
 SEEDING IN RELOCATED DITCH AREA TO BE DONE BY COUNTY FORCES WITHIN 7 DAYS OF EARTHWORK OPERATION

Z:\COWork\ROAD Projects\00122RS-Missal\Planning\EP-Survey\Survey-10-18-06.DWG, 3/23/2007 2:47:47 PM