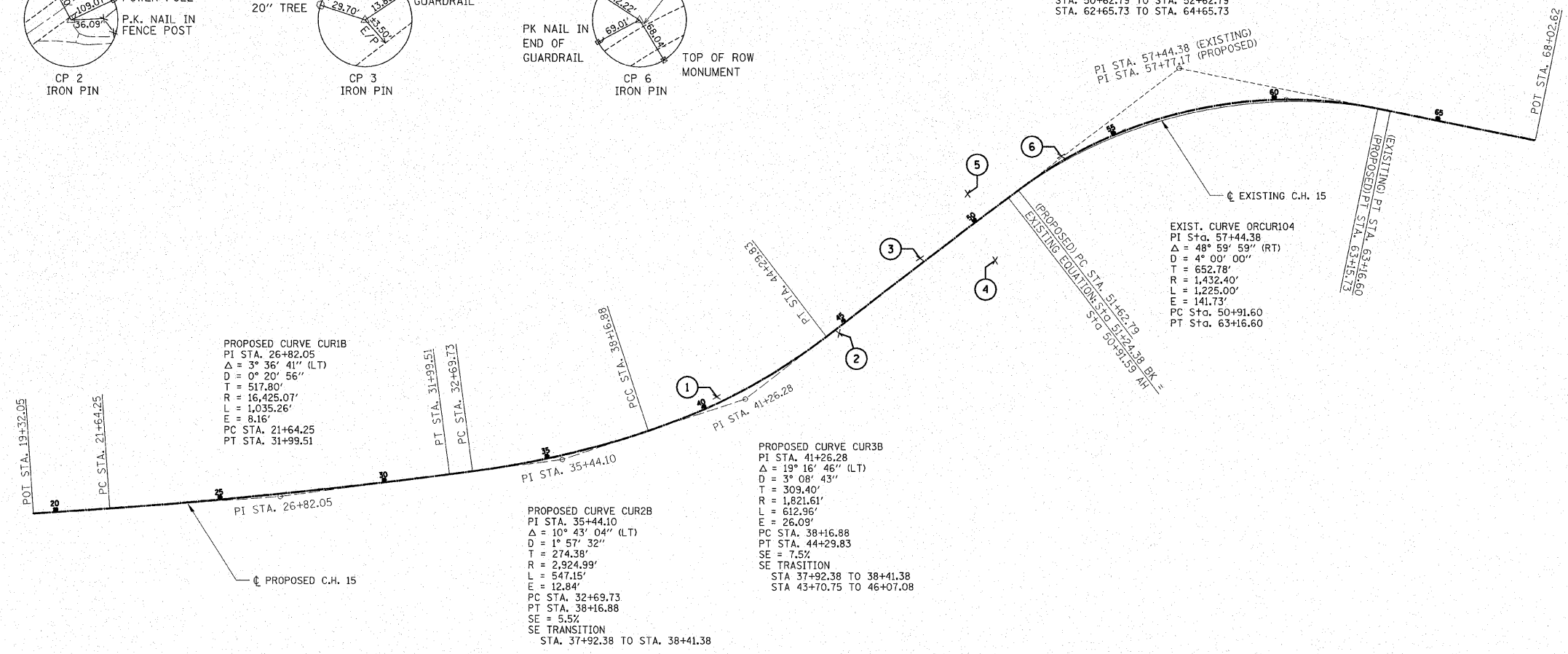


PROPOSED CURVE CUR4B
 PI Sta. 57+77.17
 $\Delta = 48^\circ 59' 59''$ (RT)
 $D = 4^\circ 15' 00''$
 $T = 614.38'$
 $R = 1,348.14'$
 $L = 1,152.94'$
 $E = 133.39'$
 PC Sta. 51+62.79
 PT Sta. 63+15.73
 $SE = 6\%$
 SE TRANSITION
 STA. 50+62.79 TO STA. 52+62.79
 STA. 62+65.73 TO STA. 64+65.73



HORIZONTAL ALIGNMENT (PROPOSED)			
POINT	NORTHING	EASTING	
C.H. 15 (FOX RIVER DRIVE)			
P.C. Sta. 32+69.73	5,739.773370	2,775.555598	
P.I. Sta. 35+44.10	5467.735500	2811.297500	
P.I. Sta. 41+26.28	4913.171500	2993.658500	
P.I. Sta. 57+77.17	3598.479348	4001.811682	
P.O.T. Sta. 68+00.00	2521.953259	3782.446147	

HORIZONTAL ALIGNMENT (EXISTING)			
POINT	NORTHING	EASTING	
C.H. 15 (FOX RIVER DRIVE)			
P.C. Sta. 32+69.73	5739.773370	2775.555598	
P.I. Sta. 35+44.10	5467.735500	2811.297500	
P.I. Sta. 41+26.28	4913.171500	2993.658500	
EOU. STA. 51+24.38 (BK)			
= STA. 50+91.59 (AH)	4116.496135	3604.577796	
P.I. Sta. 57+44.38	3598.479348	4001.811682	
P.O.T. Sta. 67+62.47	2521.953259	3782.446147	

CONTROL POINTS (IRON PINS UNLESS NOTED)			
CONTROL PT.	LOCATION FROM ζ C.H. 15	NORTHING	EASTING
1	LT. 18.56 STA. 40+48.76	5000.00	3000.00
2	RT. 15.59 STA. 44+66.38	4629.16	3191.80
3	LT. 15.24 STA. 47+98.84	4384.10	3418.58
4	RT. 128.42 STA. 49+75.85	4156.22	3412.29
5	LT. 84.94 STA. 50+34.27	4239.69	3617.15
6	LT. 13.98 STA. 53+28.08	3956.12	3732.30

LEGEND
 CONTROL POINT LOCATION

HAMPTON, LENZINI & RENWICK, INC.
 CIVIL & STRUCTURAL ENGINEERS

HLR 3085 STEVENSON DRIVE, SUITE 201
 SPRINGFIELD, ILLINOIS 62703
 (217) 546-3400

ELGIN • SPRINGFIELD • DUQUOIN

PROJECT NUMBER: 12-06-0030-1 DATE: 05/01/06
 DESIGNED: L.F.S. CHECKED: S.W.M. DRAWN: W.J.S.

HORIZONTAL ALIGNMENT
 SECTION 96-00044-00-BR
 FOX RIVER DRIVE
 KENDALL COUNTY