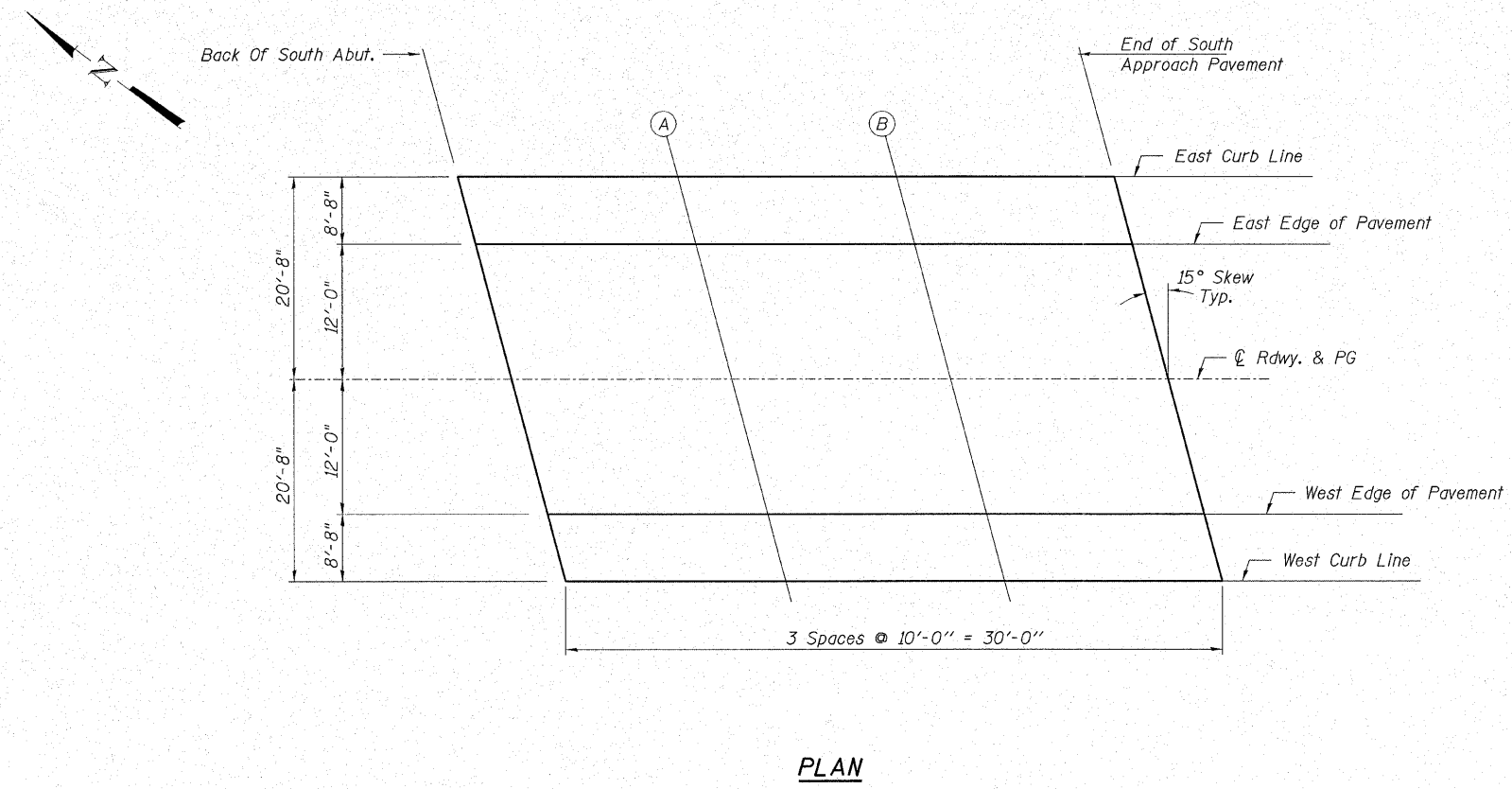


CONTRACT NO. 87325



**PLAN**

**EAST CURB LINE**

Location	LT. Station	Offset	Theoretical Grade Elevations
Bk. S. Abut.	50+58.75	-20.67	579.28
A.	50+68.75	-20.67	579.25
B.	50+78.75	-20.67	579.29
Bk. S. Appr. Pav't.	50+88.75	-20.67	579.34

**EAST EDGE OF PAVEMENT**

Location	LT. Station	Offset	Theoretical Grade Elevations
Bk. S. Abut.	50+61.07	12.00	579.44
A.	50+71.07	12.00	579.42
B.	50+81.07	12.00	579.43
Bk. S. Appr. Pav't.	50+91.07	12.00	579.45

**CL & PROFILE GRADE**

Location	CL Station	Offset	Theoretical Grade Elevations
Bk. S. Abut.	50+64.29	0.00	579.67
A.	50+74.29	0.00	579.64
B.	50+84.29	0.00	579.61
Bk. S. Appr. Pav't.	50+94.29	0.00	579.58

**WEST EDGE OF PAVEMENT**

Location	RT Station	Offset	Theoretical Grade Elevations
Bk. S. Abut.	50+67.51	-12.00	579.42
A.	50+77.51	-12.00	579.37
B.	50+87.51	-12.00	579.32
Bk. S. Appr. Pav't.	50+97.51	-12.00	579.26

**WEST CURB LINE**

Location	RT Station	Offset	Theoretical Grade Elevations
Bk. S. Abut.	50+69.83	-20.67	579.24
A.	50+79.83	-20.67	579.17
B.	50+89.83	-20.67	579.10
Bk. S. Appr. Pav't.	50+99.83	-20.67	579.02

**HAMPTON, LENZINI & RENWICK, INC.**  
 CIVIL & STRUCTURAL ENGINEERS

3085 STEVENSON DRIVE, SUITE 201  
 SPRINGFIELD, ILLINOIS 62703  
 (217) 546-3400

**HLR**

ELGIN • SPRINGFIELD

PROJECT NUMBER: 12-06-0030-1    DATE: 03/12/07  
 DESIGNED: S.W.M.    CHECKED: M.G.B.    DRAWN: W.J.S.

**TOP OF SOUTH APPROACH  
 SLAB ELEVATIONS**  
 SECTION 96-00044-00-BR  
 FOX RIVER DRIVE / C.H. 15  
 KENDALL COUNTY  
 STRUCTURE NO. 047-3150 / STATION 49+62