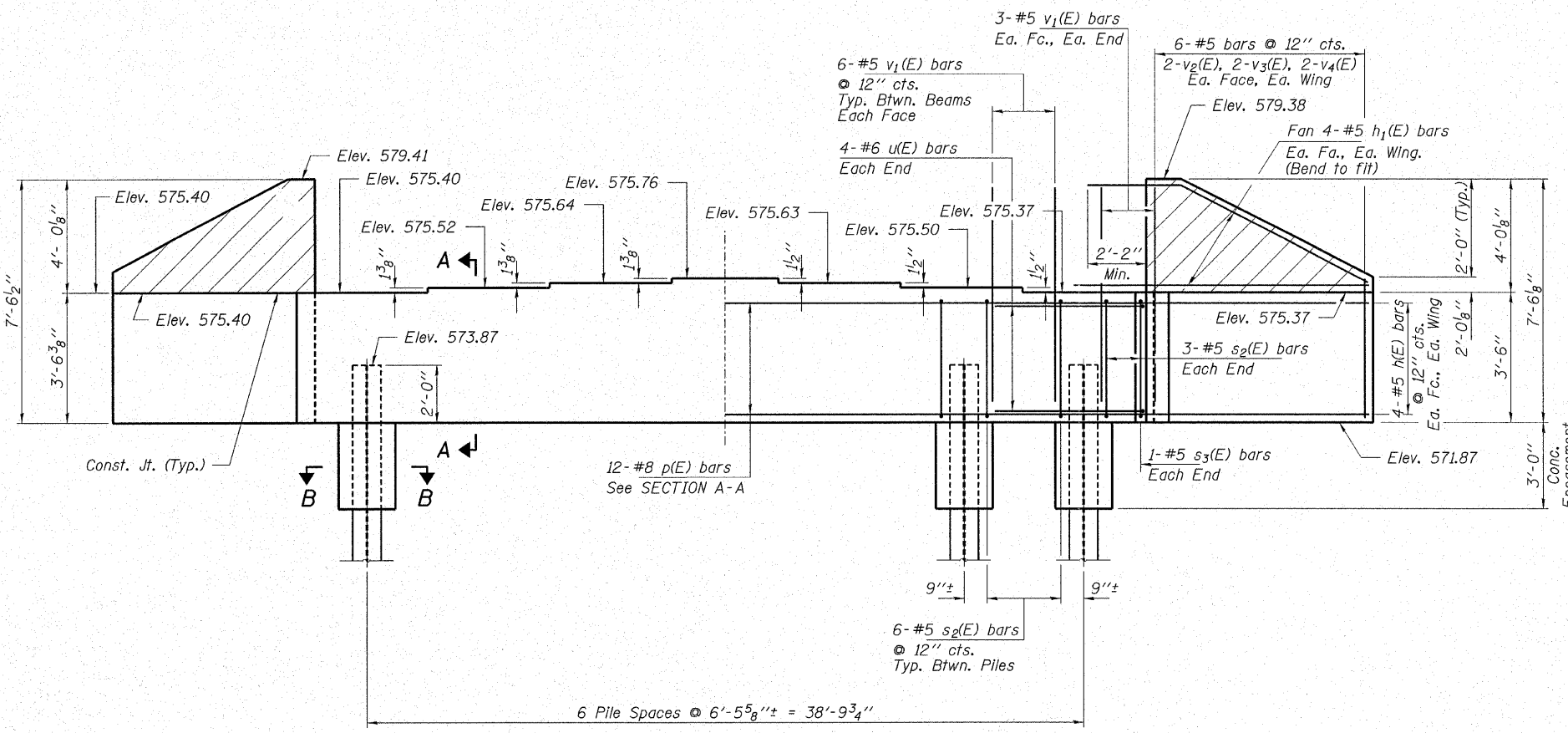
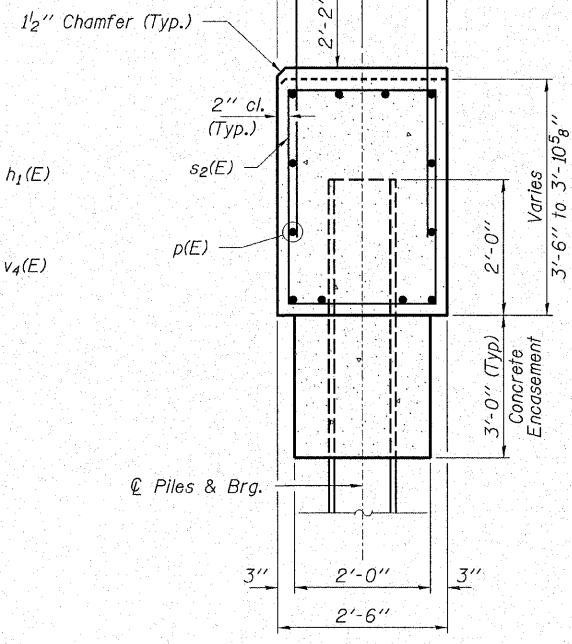


PLAN

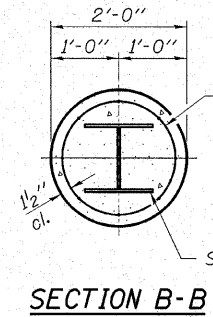


ELEVATION
(Looking South)

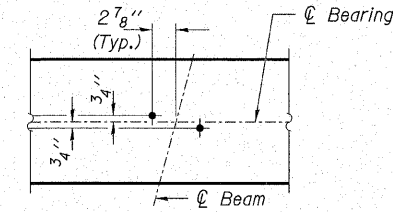
Notes:
 Hatched areas to be poured with the deck after beams are in place.
 Quantity of concrete included in "Concrete Superstructure" on sheet 44.
 Reinforcement bars designated (E) shall be epoxy coated.
 All edges shall have standard 3/4" chamfer except as noted.
 Pour steps monolithically with cap.



SECTION A-A



SECTION B-B

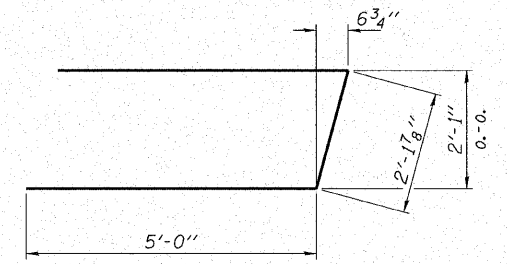


DETAIL A

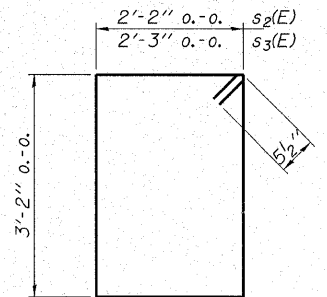
PILE DATA

Type.....Steel HP12x53 w/Pile shoes
 No. Req'd. (S. Abut.).....7
 Nominal Req'd Bearing.....418 Kips/Pile
 Allowable Resistance Available.....139 Kips/Pile
 Est. Length.....34 Ft/Pile

Notes:
 * Includes one test pile to be driven in a permanent location at the South Abutment.
 The Steel H-piles shall be according to AASHTO M270 Grade 50.
 The test piles shall be driven to 110 percent of the Nominal Required Bearing indicated in the pile data information.



BAR u(E)



BARS s2(E) & s3(E)

Welded wire fabric
 6 x 6-W4.0 x W4.0
 weighing 58#/100 sq. ft.
 The cost of Excavation and
 Reinforcement is included
 in the cost of Concrete
 Encasement. Forms for
 Encasement may be omitted
 when soil conditions will permit.

BILL OF MATERIAL - S. ABUT.

BAR	NO.	SIZE	LENGTH	SHAPE
h(E)	16	#5	7'-9"	—
h1(E)	16	#5	8'-3"	—
p(E)	12	#8	44'-4"	—
s2(E)	42	#5	11'-7"	□
s3(E)	2	#5	11'-9"	□
u(E)	8	#6	12'-2"	—
v1(E)	84	#5	4'-6"	—
v2(E)	8	#5	7'-1"	—
v3(E)	8	#5	6'-2"	—
v4(E)	8	#5	5'-4"	—
Concrete Structures			Cu. Yd.	16.6
Reinforcement Bars, Epoxy Coated			Pound	2,915
Steel Piles HP12x53			Foot	204
Test Pile Steel HP12x53			Each	1
Concrete Encasement			Cu. Yd.	2.5
Pile Shoes			Each	7
Structure Excavation			Cu. Yd.	13

HAMPTON, LENZINI & RENWICK, INC.
 CIVIL & STRUCTURAL ENGINEERS

3085 STEVENSON DRIVE, SUITE 201
 SPRINGFIELD, ILLINOIS 62703
 (217) 546-3400

ELGIN • SPRINGFIELD

PROJECT NUMBER: 12-06-0030-1 DATE: 03/12/07
 DESIGNED: S.W.M. CHECKED: M.G.B. DRAWN: D.B.

SOUTH ABUTMENT
SECTION 96-00044-00-BR
FOX RIVER DRIVE / C.H. 15
KENDALL COUNTY
STRUCTURE NO. 047-3150 / STATION 49-62