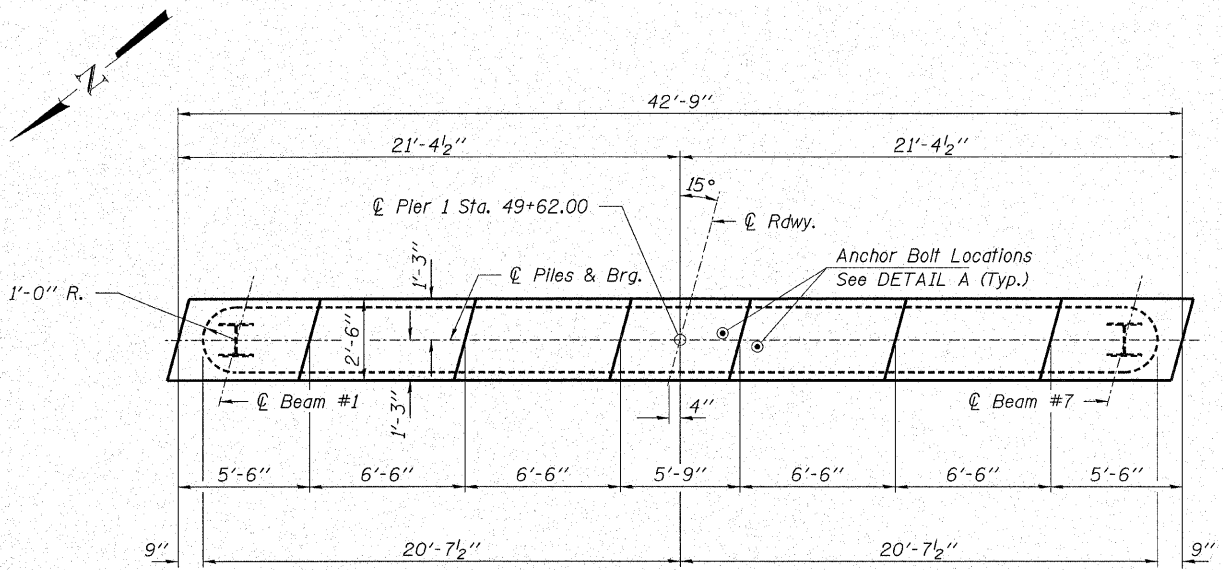
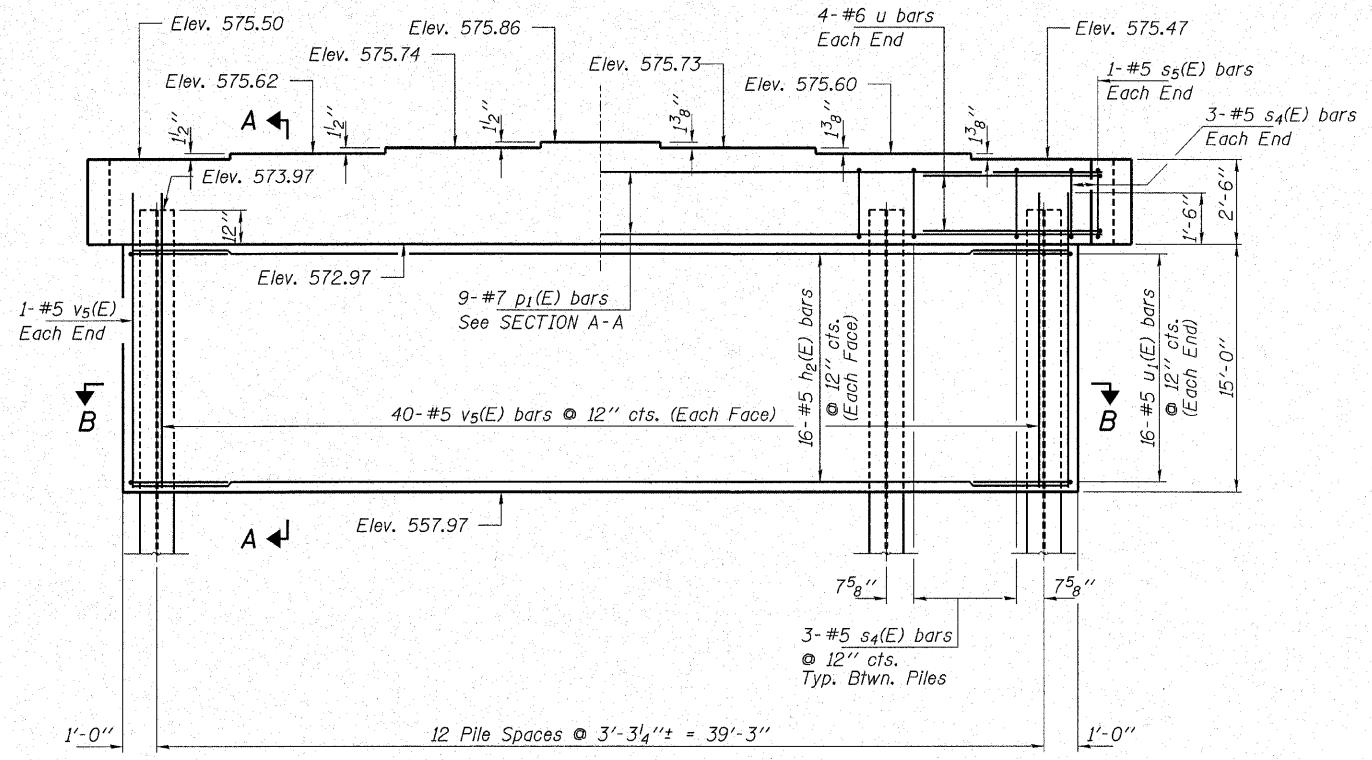


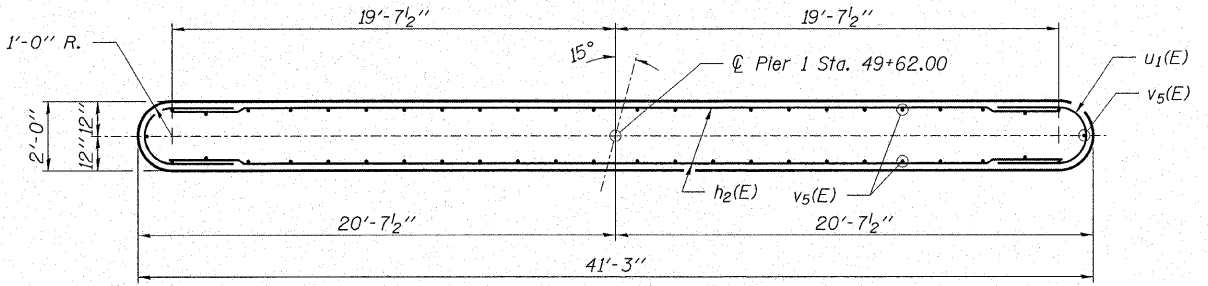
CONTRACT NO. 87325



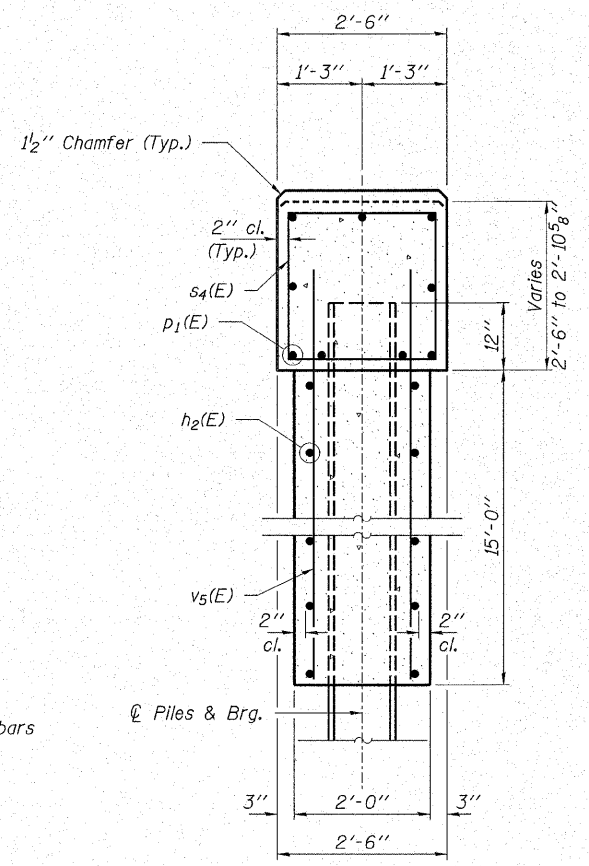
PLAN



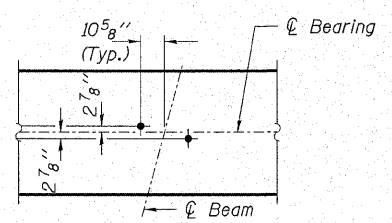
ELEVATION
(Looking South)



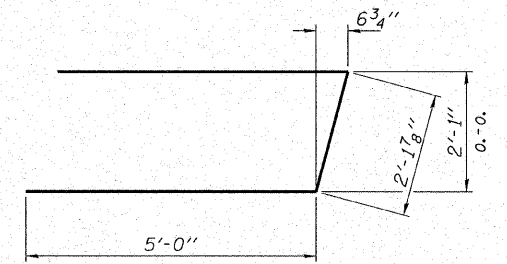
SECTION B-B



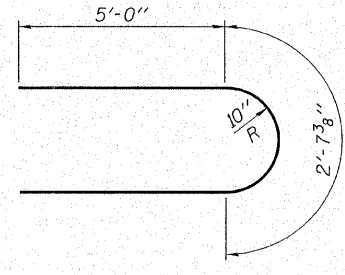
SECTION A-A



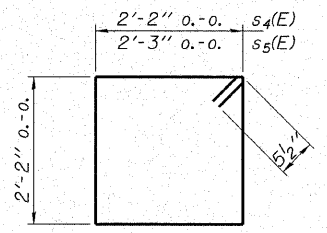
DETAIL A



BAR u(E)



BAR u1(E)



BARS s4(E) & s5(E)

Notes:
Reinforcement bars designated (E) shall be epoxy coated.
All edges shall have standard 3/4" chamfer except as noted.
Pour steps monolithically with cap.

BILL OF MATERIAL - PIER 1

BAR	NO.	SIZE	LENGTH	SHAPE
h ₂ (E)	32	#5	39'-3"	—
p ₁ (E)	9	#7	42'-5"	—
s ₄ (E)	42	#5	9'-7"	□
s ₅ (E)	2	#5	9'-9"	□
u(E)	8	#6	12'-2"	U
u ₁ (E)	32	#5	12'-8"	U
v ₅ (E)	82	#5	16'-6"	—
Concrete Structures			Cu. Yd.	56.0
Reinforcement Bars, Epoxy Coated			Pound	4,510
Steel Piles HP12x53			Foot	384
Test Pile Steel HP12x53			Each	1
Pile Shoes			Each	13
Underwater Str. Exc. Prof. - Loc. 1			Each	1
Structure Excavation			Cu. Yd.	60

PILE DATA

Type..... Steel HP12x53 w/Pile shoes
No. Req'd. (Pier 1)..... *13
Nominal Req'd Bearing..... 418 Kips/Pile
Allowable Resistance Available..... 139 Kips/Pile
Est. Length..... 32 Ft/Pile

Notes:

* Includes one test pile to be driven in a permanent location at the Pier 1.

The Steel H-piles shall be according to AASHTO M270 Grade 50.

The test piles shall be driven to 110 percent of the Nominal Required Bearing indicated in the pile data information.

HAMPTON, LENZINI & RENWICK, INC.
CIVIL & STRUCTURAL ENGINEERS

3085 STEVENSON DRIVE, SUITE 201
SPRINGFIELD, ILLINOIS 62703
(217) 546-3400

ELGIN • SPRINGFIELD

PROJECT NUMBER: 12-06-0030-1 DATE: 03/12/07
DESIGNED: S.W.M. CHECKED: M.G.B. DRAWN: D.B.

PIER 1
SECTION 96-00044-00-BR
FOX RIVER DRIVE / C.H. 15
KENDALL COUNTY
STRUCTURE NO. 047-3150 / STATION 49+62